

Product Information

ESI[tronic]2.0 Off Highway



Product Information ESI[tronic] 2.0 Off Highway Products



With ESI[tronic] 2.0 update 2017/3 we will introduce two new info types for Off-Highway (OHW) vehicles and machines in EMEA:

▶ ESI[tronic] 2.0 Agriculture (OHW 1)

- ▶ Covers off-highway diagnosis for agricultural vehicles such as, tractors, harvesters, etc.



▶ ESI[tronic] 2.0 Construction / Engines (OHW 2)

- ▶ Covers off-highway diagnosis for construction vehicles, engines and other



Product Information ESI[tronic] 2.0 Off Highway

General information

Very often with OHV we face the following situation that a vehicle identification in the usual way is not possible because of:

- Engine being used by the manufacturer unknown
- Component compilation on OHV unknown
- Diagnostic socket unknown

How do we proceed?

ESI[tronic] for Truck offers a wide range of systems which can be selected by the user without previously using the vehicle identification system.

The connection help is in such cases rather weak due to the fact that the component compilation is unknown. Location of the diagnostic socket is not available for such diagnostic cases.



Product Information ESI[tronic] 2.0 Off Highway

ESI[tronic] OHW 1 Diagnosis for agricultural vehicles

Progress & significant
Improvements with each update

- Models 765
- Systems 4.056
- Technical data 2.166
- Diagrams 2.185
- Diagrams 1.019



Tractors



Combined Harvester



Shredders



Grape harvester



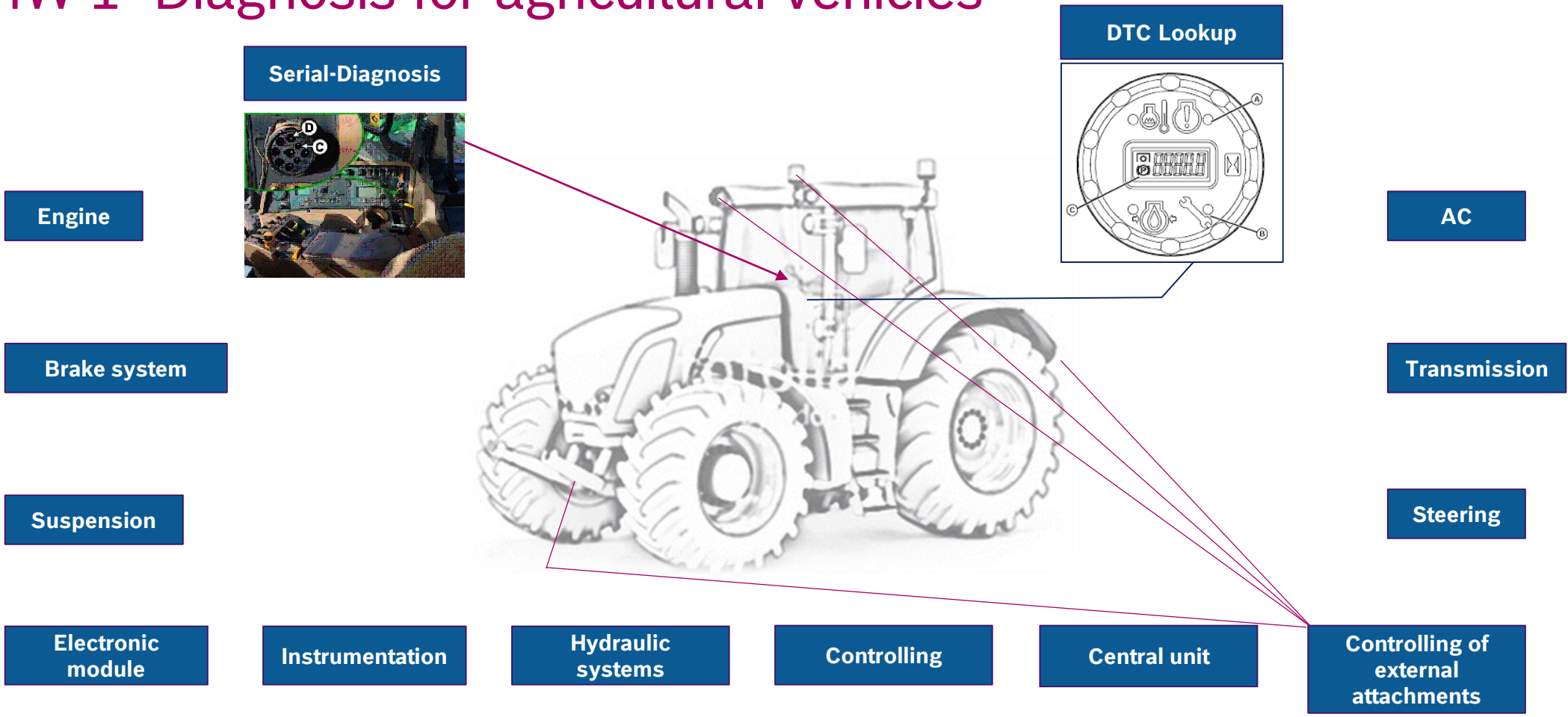
Telescopic loader/lifter



Any other machinery

Product Information ESI[tronic] 2.0 Off Highway

OHW 1 Diagnosis for agricultural vehicles



Product Information ESI[tronic] 2.0 Off Highway

Blink code/DTC Lookup



Steuereinheit ECU

Die Steuereinheit ECU (Engine Control Unit) ist für die Steuerung des Motors zuständig.

Lampe	Diagnosecode	Kurzbeschreibung	Beschreibung
gelb	ECU 000097.16	Wasserabscheider des Motors voll	Motorleistung begrenzt. Wasser ablassen.
gelb	ECU 000107.00	Motorluftfilter verstopft	Filter reinigen oder ersetzen.
rot	ECU 000190.00	Motordrehzahl hoch	Motordrehzahl verringern.
gelb	ECU 000190.16	Motordrehzahl hoch	Motordrehzahl verringern.
blau	ECU 001569.31	Motor	Motorleistung gedrosselt.
blau	ECU 523581.31	Motor	Kalibrierung des Einspritzsystem läuft.

Werden weitere Diagnosecodes angezeigt, dann funktioniert eine Traktorkomponente nur eingeschränkt oder gar nicht. Code notieren und Kontakt mit dem Händler aufnehmen.

ECU HPCR HP3 (Level 14 - Tier 3 / Stage III A) , Electronic Diesel Control, Common Rail

Info

Diagnosehandbuch

Alle Fehlercodes, die im Fahrzeug auftreten können, werden auf dem Bildschirm mit vorangestellter Abkürzung für das System angezeigt.

Die Fehlercodes werden mit dem im nächsten Bild dargestellten Format angezeigt.

Legende

A: Steuergerät, das den Fehlercode enthält.

B: Fehlercode.

C: FMI: Fehlertyp.

Fehlercode und FMI durch einen Punkt (.) getrennt im manuellen Diagnoseabschnitt des Diagnosewerkzeugs eingeben.

Abbildungen



Fehlercode Suchen

Product Information ESI[tronic] 2.0 Off Highway Vehicle Diagnosis

ESI[tronic] 2.0
BOSCH System/manufact. KTS Truck / #_CV ?

Vehicle info Diagnosis Trouble-shooting Maintenance Circuit diagrams Equipment

ECU HPCR (Level 34 - Final Tier 4 / Stage IV), Electronic Diesel Control, common rail

Please select a diagnostic connector

UNI adapter
1 684 463 792
Pin C: 5 (Yellow cable - CAN H) + F
Pin D: 6 (Gray cable - CAN L) + F

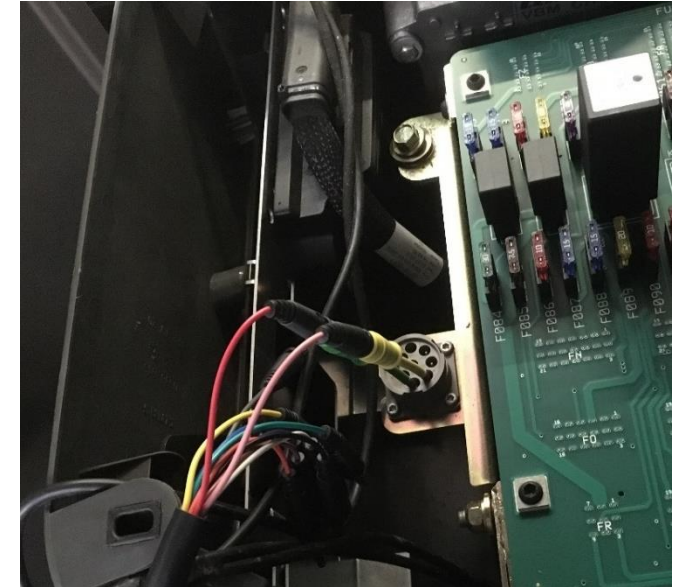
Power supply with:
1 684 463 801 or 1 684 463 801 / 1 684 463 801 + 1 684 465 810

Pin-out Direct connector

Pin C and D + F

Legend:
Haldex TX
Haldex RX
K Line
L Line
CAN H
CAN L
J1708 A
J1708 B
J1850 PWM-
J1850 PWM+
J1850 VPW

Back Connector UNI adapter Continue



Click at „UNI-Adapter“ the user will be provided with further details regarding how to communicate with this vehicle.

Product Information ESI[tronic] 2.0 Off Highway ESI[tronic] OHV 2 Industry and Construction engine



Industry engines
Stationary engines



Street Sweepers



Cranes, telescopic cranes



Special vehicles

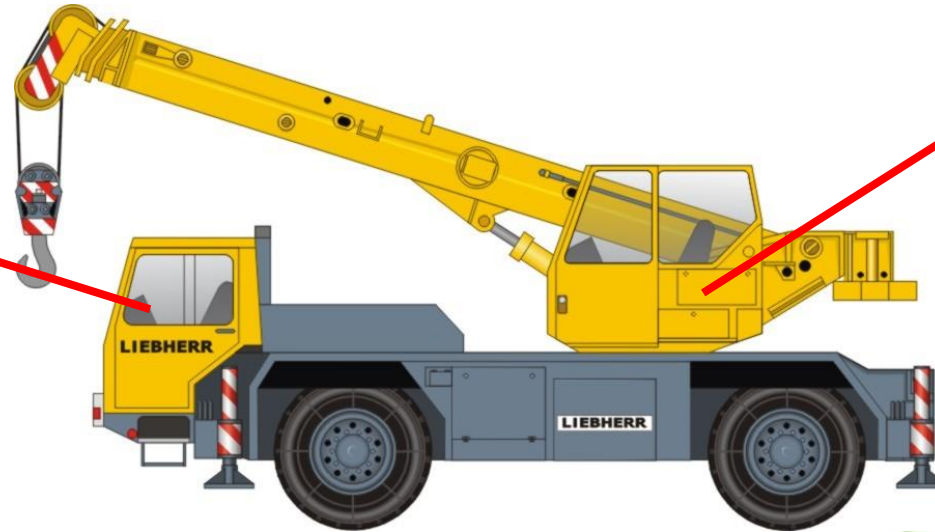
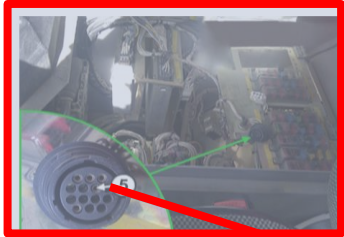


Construction machines



BAE SYSTEMS, BOSCH REXROTH, CASE CONSTRUCTION, CATERPILLAR, FIAT KOBELCO, GROVE, HITACHI, JOHN DEERE, KOMATSU, LIEBHERR, NEW HOLLAND CONSTRUCTION, TERBERG, TEREX – DEMAG, VOLVO CONSTRUCTION, XCMG... ASH, AUSA, EUROVOIRIE, MATHIEU-YNO, RAVOCATERPILLAR, CUMMINS, DEUTZ, IVECO-FPT, KUBOTA, MAN, MERCEDES-BENZ, MTU, PERKINS, SCANIA, SISU, VOLVO PENTA...

Product Information ESI[tronic] 2.0 Off Highway ESI[tronic] OHV 2 Construction machines cranes

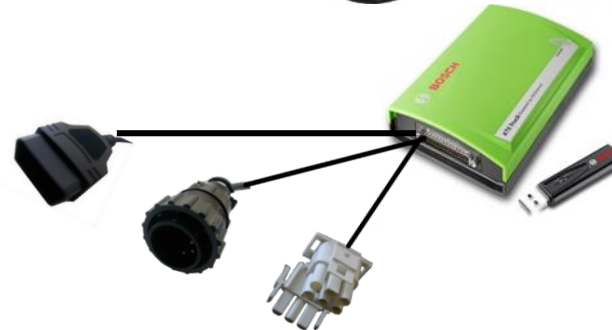


Upper Chassis

- Motor MB PLD

Lower chassis

- MR - Engine MB PLD, MCM Common Rail
- SCR Bluetec
- FR – FR, ADM 1-3, CPC
- AS Tronic, Eurotronic, Allison,
- ECOMAT 1 / ECOMAT 2
- ABS D/E



Product Information ESI[tronic] 2.0 Off Highway ESI[tronic] OHV 2 Construction machines

Systems

- **Engine**
- Instrumentation
- Transmission

- Dozer
- Drillers
- Compactors
- Motor graders
- Backhoe loaders
- Asphalt Pavers
- Excavators



Product Information ESI[tronic] 2.0 Off Highway ESI[tronic] OHV 2 Sweepers and special vehicles

System / Manufacturer - Configurator:

- Bucher, Bokimobil, Hansa, Multicar.....

Engine - ECU System:

- VM Motori Euro 4 and 5 (VM 754 EU4,EU5, EU6)
- Iveco Euro 4, Euro 5, Euro 6 (Engine F1Co)
- Deutz TCD 2.9 EU Stage IIIB / Tier4

ABS - Wabco Systems:

- Wabco HABS D
- Wabco HBS AddOn-E



Product Information ESI[tronic] 2.0 Off Highway ESI[tronic] OHV 2 Sweepers and special vehicles

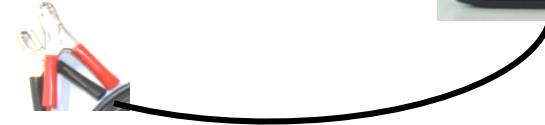
Diagnostic socket engine



Diagnostic socket ABS



Connection 12/24 V at vehicle battery or cigarette lighter. Make sure there is always 24V supplied.



Iveco Adapter 1 684 463 774

OBD Adapter



Connection Wabco – Bosch Adapter number
1 684 463 780



Product Information ESI[tronic] 2.0 Off Highway ESI[tronic] OHV 2 Industry engines

Heating plants



Gen Sets



Industry engines; Silo transporter / sweepers



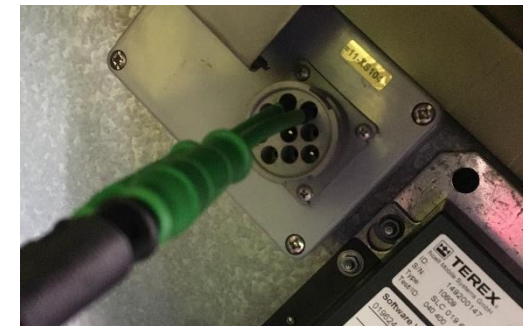
Construction machinery



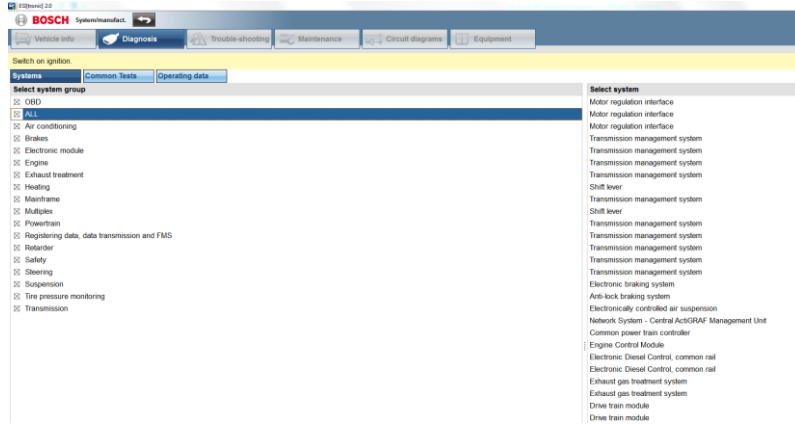
Special vehicle at Airport/Ports



Diagnosis



Product Information ESI[tronic] 2.0 Off Highway Diagnosis on Industry engines & Construction engines



OHW (Off-highway) – Diagnostic software with a huge data base of technical Information !

- Automatic system- and fault code recognition, Sensor monitoring
- Component controlling und -Adaption
- Service data and Service interval reset
- Reading of operation hours and engine consumption
- Adaptions and Calibrations of Components
- Technical System data (engine, Transmission...)
- Interactive wire diagrams
- Troubleshooting instructions by symptoms
- Technical data (engine...)
- Data synchronisation with safety copy on external server
- Task management between more than on workshop technician
- Report management: Diagnosis, Service and tasks
- Access to engine history



Product Information ESI[tronic] 2.0 Off Highway

Important Information



The information types are initially provided as 1-year, unlimited and additional licenses.

An extension to the license model according to ESI[tronic] Truck will follow with update 2018/2.

The previously free demo version (which was integrated in the ESI[tronic] Truck) is significantly improved in terms of vehicle coverage and diagnostic functionality.

You will find the coverage as usual using the so-called 'vehicle configurator'. **Please note that this two info types now are charged.** With update 2018/2 the coverage will be provided via the standard vehicle identification, similar to ESI[tronic] Truck.

The use of technical documents and error search for error code and error search by symptom is initially possible as free demo version by the end of 2018.

The use of the ESI[tronic] OHW 1 or OHW 2 infotypes, individually in combination with ESI[tronic] Truck, is currently not possible on one PC / laptop. An installation on two PCs / laptops is required. You can use the infotypes Truck, OHW 1 and OHW 2 on a PC / laptop. Further combinations with ESI[tronic] Truck will follow.

Product Information ESI[tronic] 2.0 Off Highway Variants



▶ Available variants with update 2017/3:

- ▶ ESI OHW 1
- ▶ ESI OHW 2
- ▶ ESI Truck + ESI OHW 1 + ESI OHW 2

▶ Available variants, in addition, with update 2018/2

- ▶ ESI Truck + ESI OHW 1
- ▶ ESI Truck + ESI OHW 2

Product Information ESI[tronic] 2.0 Off Highway

Facts & Figures

► Introduction

- With ESI[tronic] 2.0 update 2017/3



► Part Numbers

- ESI[tronic] 2.0 OHW 1
1 987 P12 260
- ESI[tronic] 2.0 OHW 2
1 987 P12 278

Further details see right.

1987P12260999	ESI[tronic] 2.0 Truck OHW I
1987P12278999	ESI[tronic] 2.0 Truck OHW II