

MOTORHOME MULTIMEDIA NAVIGATION CAMPER 690 DAB

Fiat Ducato 2015 →, Citroen Jumper 2015 →, Peugeot Boxer 2015 →



Subject to availability and technical modification.

Sales Start

September 2019

Order Number / EAN-Code

CAMPER 690 DAB

2 002 019 000 022

4 260 499 852 139

Highlights

- **Radio**
CODEM IV High-End tuner
FM (RDS), AM tuner
Built-In DAB+ tuner
- **Display**
Large 6.75" Resistive Multi-Touch Display
Anti-reflex Technology
- **Navigation**
Full Europe Camper Navigation
(24 month free map update) + TMC
- **Data carrier**
DVD, VCD, CD, CD-ROM, USB, SDHC
- **Media player**
Audio, Video, Picture from USB/SDHC/Disc
Audio formats MP3, FLAC, APE, WMA
Video formats Mpeg, AVI, RM, ASF, MP4, Mkv
- **Bluetooth**
Built-In Bluetooth 2.1 module
(HFP, PBAP, A2DP, AVRCP)
Built-in microphone + external mic
- **Inputs / Outputs**
Front & Rear USB
Front SDHC slot
2x A/V input
Rear view camera input (Audio/Video)
Steering Wheel Control input
- **Equalizer / Amplifier**
10-band parametric equalizer
4-channel pre-amplifier plus Sub-out
4 x 45 Watt Max. power
- **General**
Variocolor illumination
Permanent memory
External BT-microphone included
DAB+ onglass antenna included
IR remote control included
Mounting kit for Fiat Ducato, Citroen Jumper, Peugeot Boxer included

MOTORHOME MULTIMEDIA NAVIGATION CAMPER 690 DAB

BLAUPUNKT MULTITASKING



The Camper 690 DAB characterized by its "easy-to-use" (SafeDrive) styling, an exciting Blaupunkt user interface and breathtaking functional opportunities. It sports a large 6.75-inch TFT-Touch display for perfect in-car use and combines high-quality tuner RDS performance, built-in DAB+, a huge variety of different entertainment options and the connection of many types of portable media. The Camper 690 DAB has various connectivity possibilities such as Bluetooth, Aux, SDHC and USB that allow you to easily play your music collection. But no matter what you are looking for, the Camper 690 DAB will meet your personal car Multimedia needs.



GRAPHICAL INTERFACE

The Camper 690 DAB also offers various ways of personalization. The menu optics can be designed according to your taste. Simply specify any color (RGB) for the button illumination in the Settings menu, or select one of the four available colors for the menu icons: it is your choice!



NAVIGATION SYSTEM



With the Navigation system of Camper 690 DAB travel to unknown places will never be the same again. Discover new places with a touch of your finger and the Camper 690 DAB will show you the shortest or best route to get to your destination.

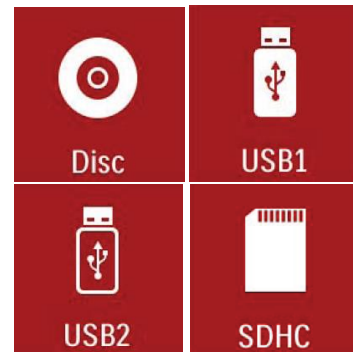


Subject to availability and technical modification.

MOTORHOME MULTIMEDIA NAVIGATION CAMPER 690 DAB

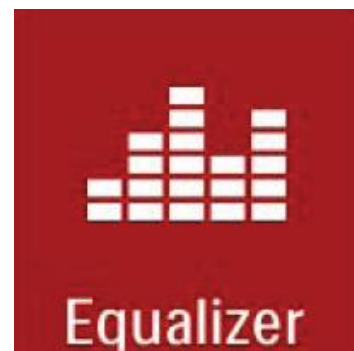
MEDIA PLAYER

Digital data has gained much popularity in these few decades and supporting these formats is a must-have for every device. But the range of supported media makes the difference. The Camper 690 DAB plays audio, image and video formats not only from disc but also straight from micro SDHC card or via one of the USB ports. The maximum number of files on the specific media is at least 20,000 files. But so many tracks only make sense if the selection is easy enough. Enjoy how playfully this works with the Camper 690 DAB.



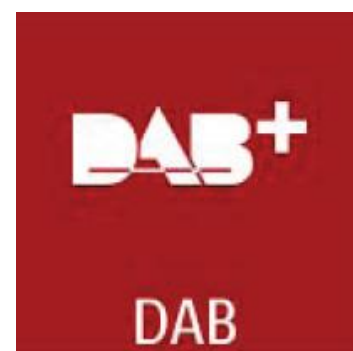
SOUND TUNING

The new graphical interface makes the sound tuning easy and exact to adjust with the 10-band parametric equalizer. But if "playing with frequencies is not your thing" just select through the sound preset selection from Pop, Rock, Techno, Jazz and Classic to suit your needs and taste.



DIGITAL RADIO

With the built-in DAB+ tuner you can listen to high-quality digital radio while driving. Enjoy the intuitive and fast browsing through the available service ensembles, or if you do not care about the broadcasting stations just browse through the alphabetical list of all programmes.



MOTORHOME MULTIMEDIA NAVIGATION CAMPER 690 DAB

ANALOG RADIO

With the high-end Blaupunkt CODEM IV tuner generation the Camper 690 DAB is also uncompromising in terms of its radio quality and sets new standards for brilliant reception. See for yourself, one's own experience says more than thousand words.



BLUETOOTH TELEPHONY

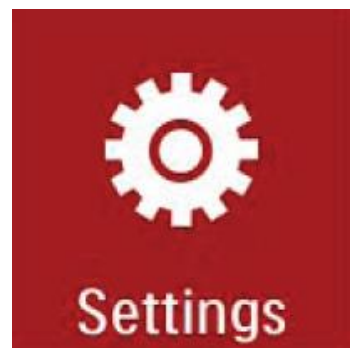


Once the entire mobile phone book is synchronized with Camper 690 DAB, nothing stops you from convenient phoning via your car's speakers. For best quality the Camper 690 DAB offers you the opportunity of choosing between the integrated or the external microphone with its perfect positioning



SETTING OPTIONS

Breathtaking functional opportunities does not mean difficult to use. The settings menus are clearly arranged, attractively designed and, most importantly, very easy to handle.



STEERING WHEEL CONTROL



If your vehicle is equipped with steering wheel buttons, you can use it in conjunction with the Blaupunkt Camper 690 DAB via the SWC (Steering Wheel Control). Thanks to the SWC function, the steering wheel remote control takes over the most important functions such as volume, mute or Bluetooth of the radio. Another security feature for the Blaupunkt SafeDrive philosophy.



MOTORHOME MULTIMEDIA NAVIGATION CAMPER 690 DAB

REAR VIEW CAMERA



Parking can be a precision job. The Camper 690 DAB is equipped with a camera inputs (Camera). So you always keep the overview and nothing should go wrong anymore.



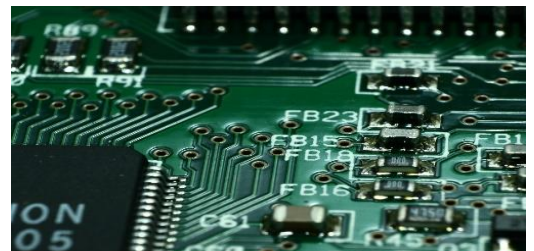
AUDIO / VIDEO INPUT

Flexibility is furthermore provided in analogue connection. The two rear AV-Inputs (AV-IN 1 & AV-IN 2) can realize permanent connection of external sources.



PERMANENT MEMORY

Thanks the integrated Permanent Memory the Camper 690 DAB keeps the memory of the user settings and preset stations when main power is down.



OPERATING CONCEPT



Optimal ease of use is an important factor for safety while driving. Especially the volume control and the switching from radio to navigation or calling the main menu must be quickly and easily accessible. Thanks to its hardkey buttons (home, navigation, DIM & eject) and the easily accessible volume control, the Blaupunkt Camper 690 DAB can be easily and safely operated while driving.



Subject to availability and technical modification.

MOTORHOME MULTIMEDIA NAVIGATION

CAMPER 690 DAB

SYSTEM

User interface	Blaupunkt dynamic graphic user interface
Permanent memory	yes (user settings, presets etc.)

DISPLAY

Technology	LED backlight TFT
Screen size	6.75"
Resolution	800 x 480 Pixels
Touchscreen	Yes
Brightness adjustable	Yes
Display switch off	Yes (selectable via Night Display APP)
Clock / Date display	Yes (auto sync via GPS)
Clock mode	24 / 12 hours
Radio system languages	Czech, English, French, German, Hebrew, Italian, Polish, Spanish, Russian, Portuguese

ANALOG RADIO

Type of tuner	High-end CODEM IV
World-Tuner (switchable)	Yes
Wave bands	FM, AM
Radio Data System (RDS)	AF, CT, EON, PS, PTY, TA, TP, RT
Travelstore	Yes (FM, AM)
Band Scan / Preset Scan	Yes / Yes
Search via frequency	Yes
Select via frequency scale	Yes
Station memory (presets)	30
Sensitivity	lo/dx
Frequency response (Hz) -3dB	50 – 15.000

DIGITAL RADIO

DAB+ built-in	Yes
DAB Band III / L-band	Yes / No
Service update	Yes (auto/manual)
Manual ensemble search	Yes
Station memory	30
Ensemble browsing	Yes
Station browsing	Yes
Band Scan / Preset Scan	Yes / Yes
Service link DAB-FM	Yes
Radio text	Yes
Programme types (PTY)	Yes
Traffic announcement	Yes (via FM RDS TA)

NAVIGATION

Full Europe Camper Navigation (incl. 24 month free map update) + TMC

DATA CARRIER

DVD	DVD, +/-R, +/-RW, -ROM
VCD	Yes
CD	CD-DA, -ROM, -R/-RW
Type disc-drive	Automatic loading
Shock proof memory	Yes
Frequency response (Hz) -3dB	20 – 20.000
USB-removable storage	USB 2.0 compatible
Memory cards	microSDHC, SD, SDXC (up to 32GB)
Formatting MSD	FAT16 / FAT 32 / EX-FAT

MOTORHOME MULTIMEDIA NAVIGATION

CAMPER 690 DAB

DVD PLAYER

Track up / down	Yes / Yes
Fast forward / fast rewind	Yes / Yes
Position via progress bar	Yes
Repeat chapter / title	Yes / Yes
Play / pause / stop / resume	Yes / Yes / Yes / Yes
Chapter skip / search	Yes / Yes
Last position memory	Yes
Root menu	Yes
Setup	Yes
Title menu	Yes
Sub-titles / audio language	Yes / Yes
Zoom / angle	Yes / Yes
Dolby Digital 2.0	Yes

BLUETOOTH

Supported version	Bluetooth 2.1
Supported profiles	HFP, PBAP, A2DP, AVRCP
Pairing (number of devices)	5
Pairing Code	1234 (default)
Hands-free calling	via micro + radio speakers
Voice dial	No
Key functions	accept / hang up / reject call
Phone book access	Yes (up to 1.000 entries by phone)
History call lists	Yes
Auto synchronisation	Yes
Auto connect / Auto answer	Yes / Yes
Favourites	yes (manually)
2nd call handling	No
Twin Connect	No
Microphones	2 (built-in + external rear micro)

MEDIA PLAYER

Video playback file formats	AVI, MP4, MPEG, RM, Mkv, ASF
DivX® Video format	No
Picture playback formats	JPEG, JPG
Audio playback formats USB	MP3, WMA, FLAC, APE
MP3 Title display	ID3-tag (versions 1 and 2), file/folder names
Album art display	Yes
Mix	Yes (all, folder)
Fast forward / fast rewind	yes (via progress bar)
Vorspulen / Zurückspulen	Ja (via Fortschrittbalken)
Bit rate MP3	32 – 320 kBit/s
Bit rate WMA	32 – 192 kBit/s
Number of files on MSD	up to ~ 20.000 files, depending on folder/file structure
iPod / iPhone control via USB	No
iPod video	No
Works with Pandora®	No
SiriusXM ready	No

EQUALIZER

Number of bands	10 (3 with bei Easy EQ mode)
Model	parametric
Type	analogue
Frequency bands	(31.25/62.5/125/250/500/1k/2k/4k/8k/16k)
Subwoofer switchable	Yes
Subwoofer separating freq.	80 Hz / 120 Hz / 160 Hz
Subwoofer Gain	Yes
Sound presets	Optimal, Classic, Rock, Jazz, Techno, Pop, User, Flat
Balance / fader	Yes / Yes
Source specific volume	DVD, Radio, A/V1, A/V2, NAV, Media

AMPLIFIER

Number of channels	4
Max. power	4 x 45 Watt
Sinus power at 14.4 V	4 x 26 Watt

MOTORHOME MULTIMEDIA NAVIGATION CAMPER 690 DAB

Subject to availability and technical modification.

INPUTS

Antenna	3 (Radio, DAB, GPS)
DAB	SMB
DVB-T	No
SiriusXM	No
USB	USB 1: Front USB (Standard A-Typ) USB 2: Rear USB (Standard A-Typ)
Memory cards	Front, microSDHC, microSD, micro SDXC
HDMI	No
Audio / Video (analogue)	AV-In 1: Front A/V (3.5 mm jack, 0,5V), AV-In 2: Rear A/V (3.5 mm jack, 0,5V)
Rear View camera	Yes
Reverse gear	Yes
Handbrake	Yes
External hand-free micro	Yes (3.5 mm jack, rear)
IR remote control	Yes (front panel)
Steering wheel remote control	Yes (SWC, rear, analogue, 3.5 mm jack, programmable via menu)
Power supply	12 V (ISO)

OUTPUTS

Video / Audio out	Yes (RCA)
4-channel preamp out	Yes (RCA, 2V)
Subwoofer	Yes (RCA)
Audio channels	4

GENERAL

Installation	2-DIN slot
Operating voltage	10,5 – 16 V
Current consumption	In operation: < 10 A
Front Panel	Fix
Weight	2,39 Kg
Overall dimension	170 x 182 x 117 mm (D x W x H)
Installation dimension	162 x 178 x 100 mm (D x W x H)
Colour	Black
Vario Colour illumination	Keys + Disc Slot: RGB Icons: 4 colors (red, green, gray, blue)

ACCESSORIES INCLUDED IN DELIVERY

User manual included	Yes
IR remote control	Yes
GPS antenna	Yes
DAB+ onglas antenna	Yes
External hands-free micro	Yes
Mounting frame	Yes
Mounting material	Yes
Connector cable sets	Yes

