

# Y475060 - Energy Lift



**Lifting Weight**

**1500kg**

**Platform Length**

**1566mm**

**Platform Width**

**800mm**

**Lift Stroke**

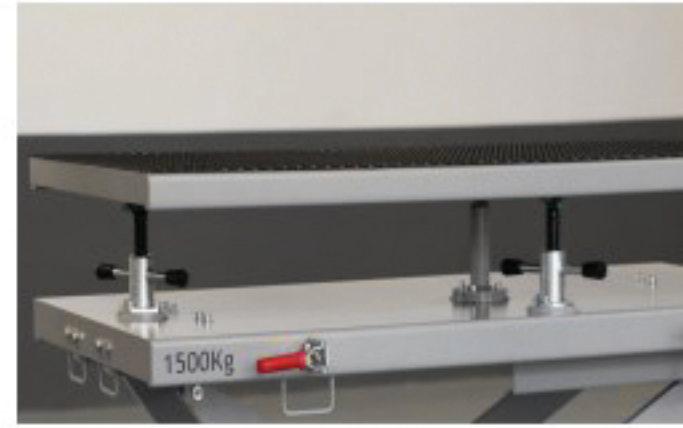
**800-1800mm**

**Lift Time**

**30-66s**

**Unlocking method**

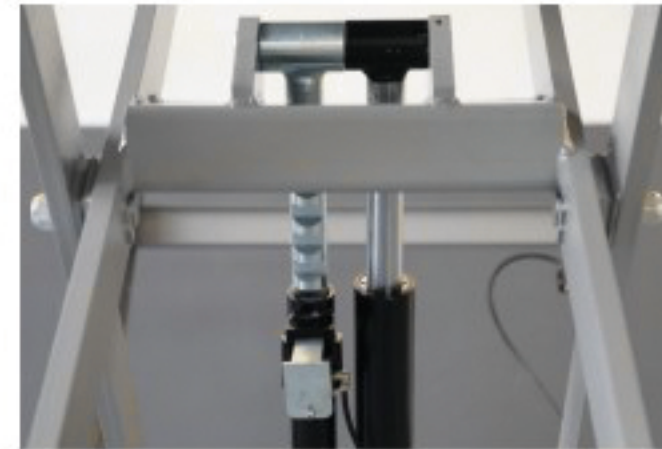
**Mechanical pneumatic release**



The platform can be adjusted in two dimensions



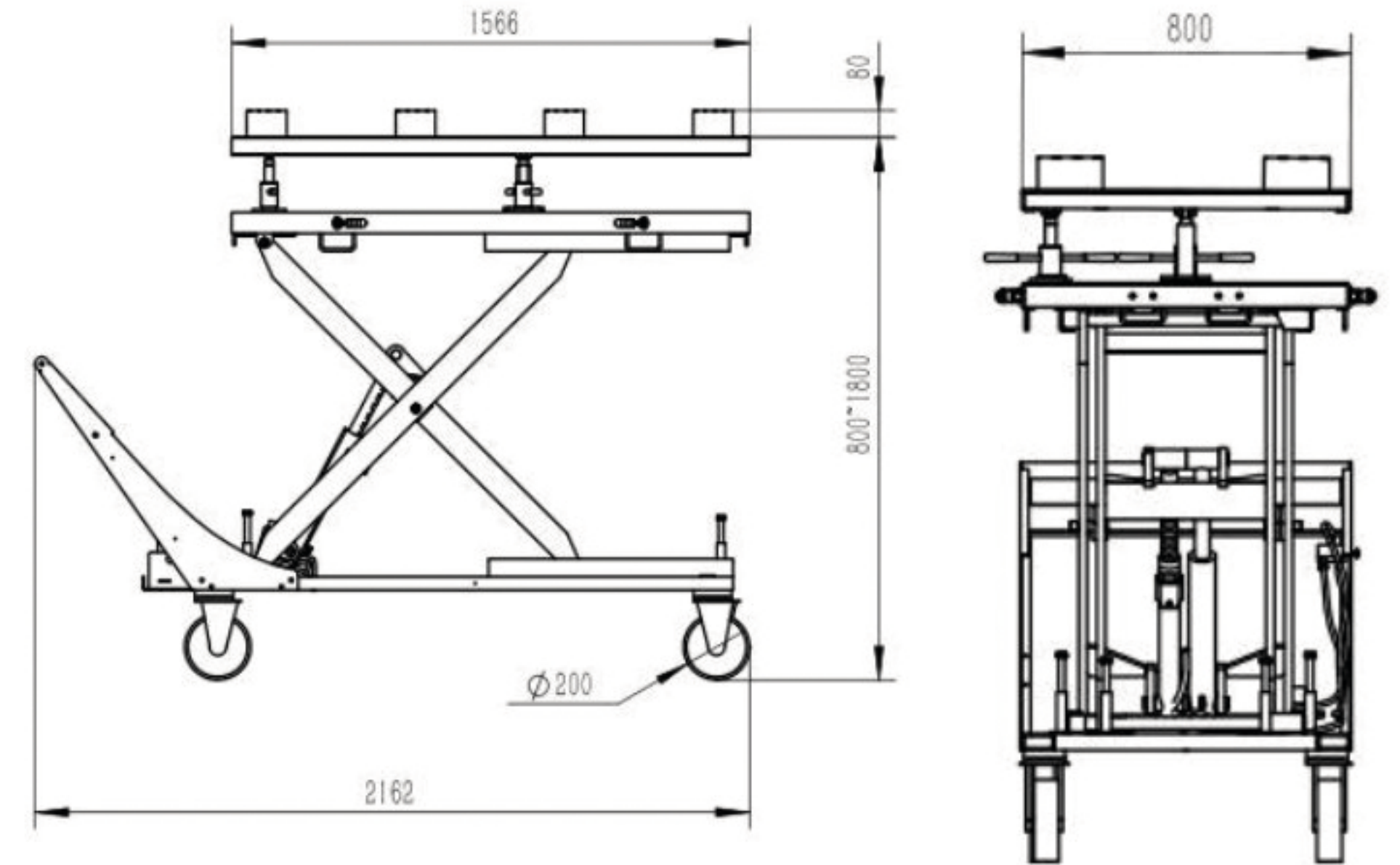
Hydraulic pneumatic pump drive



Mechanical automatic protection lock



500kg Each heavy duty moving wheel can be locked



## FEATURES

- ★ Used to disassemble/install battery packs, motors of new energy vehicles as well as engine, transmission, transaxle, fuel tank, suspension, bracket and chassis system components of conventional cars.
- ★ Pneumatic hydraulic lifting, automatic protection of mechanical lock when rising, pneumatic unlock when falling, equipped with throttle valve, control the speed of falling, to prevent cylinder failure and misoperation caused by safety accidents.
- ★ Low-lift power heavy mobile universal caster, push-pull insulated handrails, easy to move the load platform vehicle, the platform has a fixed function.
- ★ The upper platform universal joint three-point support is flexible in any direction tilt adjustment: It is convenient for the battery hanging ear hole and the body hole to quickly and directly fit, solving the problem that the battery pack cannot fit the chassis due to uneven ground.
- ★ The lower platform can slide 50mm from front to back, left to right, and the four directions of the bearing platform are equipped with fine-tuning handles for accurate alignment of holes under heavy load and platform locking during the pushing process.
- ★ Equipped with 8 rubber pads, easy to cross the rope lifting, or forklift operation to ensure the safety of operation. The platform is equipped with three anti-slip pull-up fasteners, which can be used to secure the battery pack to the platform when it is installed.