

## Article description

Electronical wiper interval relay 24V/15A. Also suitable for applications in railway vehicles. Wiper break continuously adjustable between two and twenty wipes per minute. By blocking of the windshield wiper at an ordinary relay, the relay contacts weld and thereby the module will be destroyed.

The electronic washwip interval relay has an overcurrent shutdown to prevent damage of the wiper motor or the mechanical system.

The interval relay is protected against surges, electrostatic discharge and transient disturbances.

## Technical Data

Voltage	12V/24V
Operating voltage	9-30V
Response Time	<100ms
Current	15A
Protection	IP44
Operating temperature	-20°C -60°C
Contact voltage drop	-
Lifetime	electr. 10 <sup>6</sup>
Test voltage	24V
E1-number	03 5102
Tolerance	5%
Time period	2-20 Imp/Min
Gewicht	0.04 Gramm
Information related to	-
Operating current	ca. 10mA
Breite [mm]	30 Millimeter
Höhe [mm]	60 Millimeter
Länge [mm]	30 Millimeter
Max. switching current	-
Electromagnetic Compatibility	95/54 EG & DIN 40839

## Function

The wiper interval switch controls the length of the pauses between wiping a windshield wiper in intermittent operation. Two to twenty wipes per minute can be continuously adjusted using the rotary knob. The shortest wipe pause is at the left stop with twenty wipes in one minute. The wiping pause is greatest at the right stop and the wiper runs twice a minute. If voltage is applied to connection 15, interval operation starts. If the voltage at 15 is switched off, the wiper continues to run until the wiping cycle has ended, i.e. until the wiper has reached its end position.

## Pin Configuration

PIN2	15 connection to switched plus battery
PIN4	31 connection to return of minus battery
PIN5	53S connection to wiper motor
PIN6	53M connection to input wiper motor
PIN8	30/31 connection to wiper motor, selfmaintained/limit switch

## view

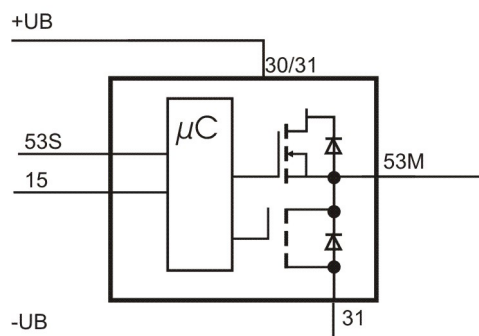


## Important characteristics

The ground switch (31b at the wiper) has to be operational to ensure a safe operation of the interval relay.

## Function diagram

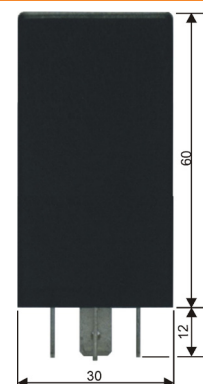
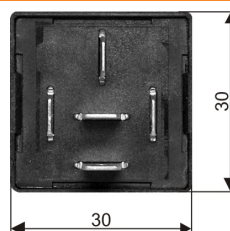
## Schematic



## Output

HSD-short circuit protected

## dimensions



**Prüfungen**

Overvoltage test 33.6V / 66.7V

Test according to EN 61373 vibration and shock

Measurement of the radio interference field strength at a distance of 3 meters

Testing of immunity to static electricity discharges according to DIN EN 61000-4-2

Testing of immunity to high-frequency electromagnetic fields according to DIN EN 61000-4-3

Testing of interference immunity against fast transients / bursts on the connection lines, according to DIN EN 61000-4-4

Testing of interference immunity against surge voltages on the connection lines according to DIN EN 61000-4-5

Exam d. Interference resistant. vs. disturbance variables, indu. d. high freq. Fields a. d. Connection line DIN EN 61000-4-6

Check Interference immunity: voltage drop, short-term interruption, voltage fluctuations DIN EN 50155

**Materials**

Flat plug	A6,3X0,8 DIN 46 244 CuZn 37 F37
Housing material	PA6GF

**article number**

WWI.300.500.00

**Ordering Information**

Wash-wip-interval-relay 15-30V 15A, electronic