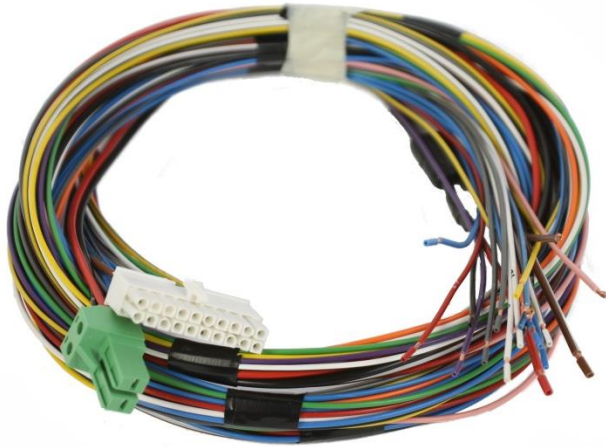


Shockwave Wiring Loom

Installation Instructions

ME9005-00N



Features Overview:

The Premier Hazard Pre assembled loom for the Shockwave siren ensures you get the best connection. The loom also comes with a 25A and 15A blade fuse for compatibility with either 12V or 24V Shockwave sirens.

Contents:

Features overview	1
Safety information	2
Inventory	2
Wiring loom function information	3
Positive and Negative HRT detection	4
Wiring a horn bypass relay	4
Day and Night volume switching	4
Optional accessories	5

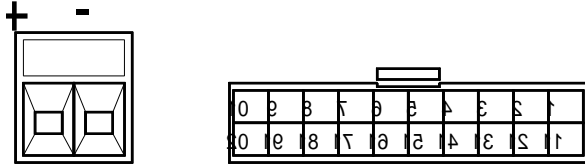
Safety Information:

- Sirens are produced in 12 and 24 Volt versions. Ensure that you have the correct version for your installation.
- A suitable fuse and holder is provided with the siren amplifier wiring loom where bought. Otherwise the recommended fuses are: 25A fuse – 12V version and 15A fuse – 24V version.
- To ensure safe installation and use this product should be used only in accordance with the instructions and should not be modified. Modification may invalidate product approvals.
- It is the responsibility of the installer to ensure safe installation of this product in accordance with the applicable national regulations.
- If you have any doubts at all as to the installation or use of this product, consult a competent person.
- To avoid risk of electric shock, disconnect electrical supply before installation.
- Ensure that the supply voltage is compatible with that marked on the product rating label.
- Only use cables and connectors as supplied with this kit.
- Avoid routing cables adjacent to high heat sources such as, engine block, exhaust.
- Take care not to trap or abrade cables.
- Protect cables from sharp metal edges.
- Ensure correct rated fuse is used.

Inventory:

Part Number	Product Description	Quantity
507018	Shockwave siren wiring loom	1
560410	25A Fuse	1
560400	15A Fuse	1
D00237	Fitting instructions	1

Wiring Loom information:

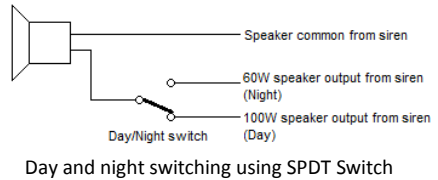
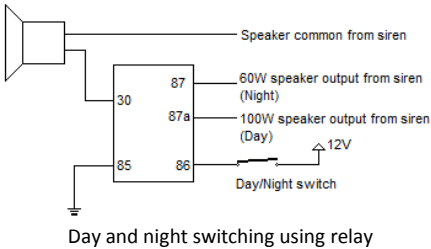


View from rear of connectors

Pin No	Wire Colour:	Function:	Wire size:
+	Red	Battery input positive feed	2mm ² (28/0.3mm) 20A
-	Black	Battery negative return feed	2mm ² (28/0.3mm) 20A
1	Brown	Speaker Common	1.5mm ² (21/0.3mm) 10A
2	NC	60W	1.5mm ² (21/0.3mm) 10A
3	Brown / white	100W / 200W	1.5mm ² (21/0.3mm) 10A
4	Light blue / orange	Radio 1a	0.75mm ² (24/0.2mm) 2A
5	Gray / orange	Radio 2a	0.75mm ² (24/0.2mm) 2A
6	White	Run	0.75mm ² (24/0.2mm) 200mA
7	White/black	Sidights	0.75mm ² (24/0.2mm) 200mA
8	Green	Input 3	0.75mm ² (24/0.2mm) 200mA
9	Yellow	Input 2	0.75mm ² (24/0.2mm) 200mA
10	Yellow / black	Input 1	0.75mm ² (24/0.2mm) 200mA
11	Light blue	Relay driver output 1	0.75mm ² (24/0.2mm) 200mA
12	Light blue / black	Relay driver output 2	0.75mm ² (24/0.2mm) 200mA
13	Black	Chassis return	0.75mm ² (24/0.2mm) 2A
14	Light blue / white	Radio 1b	0.75mm ² (24/0.2mm) 2A
15	Gray / white	Radio 2b	0.75mm ² (24/0.2mm) 2A
16	Pink	Data logger output	0.75mm ² (24/0.2mm) 200mA
17	Red	Ignition input	0.75mm ² (24/0.2mm) 2A
18	White / Red	Interlock input	0.75mm ² (24/0.2mm) 200mA
19	Orange	Horn Ring Transfer input	0.75mm ² (24/0.2mm) 200mA
20	Violet	Air-horn input	0.75mm ² (24/0.2mm) 200mA

Day and night volumes

Below are two different wiring possibilities for wiring a switch to control the siren output for day and night volume levels.

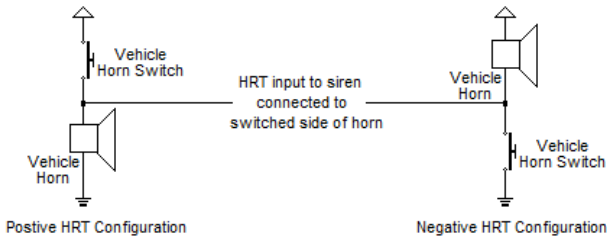


SPDT switch PH PN: 502

Note: SPDT switch can be used for both operations, when using SPDT switch it must be rated correctly for the current passing through it (6A).

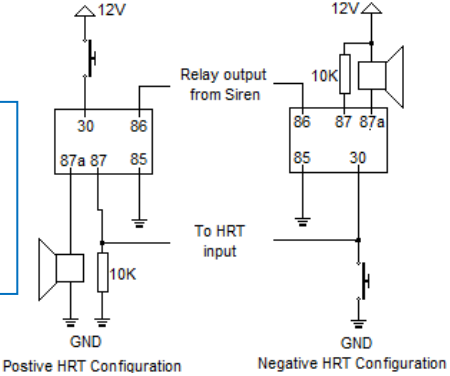
Horn ring transfer (HRT) / Footswitch

The Siren amplifier detects if the horn ring transfer is positive or negative switched at start up. If the HRT input senses a positive feed it must be a negative switched horn, if it doesn't sense a positive feed it must be a positive switched horn. The HRT input just needs to be connected to the switched side of the vehicle horn for the detection to work.



If using a footswitch use a momentary push to make switch, feeding positive to one side of the switch and connecting the HRT input wire of the siren amplifier to the other.

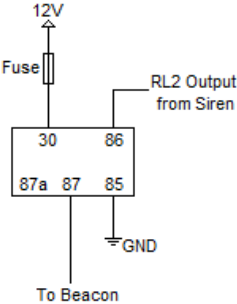
Key:
 30 Common contact
 87 Normally open contact
 87a Normally closed contact
 86 Coil positive input
 85 Coil ground return



Recommended resistor value: 10K, 0.25W, radial.

Relay output 2 (Beacon Output) – This provides a 200mA positive output feed that can be used to connect to a separate relay (available separately) so that a light source can be switched on when selected by one of the siren controllers.

Sidelights input



Optional Accessories:

- SPDT switch
- 12V change over relay SPDT
- 24V change over relay SPDT

- PH PN: 502
- PH PN: 562601
- PH PN: 562602

THIS PAGE IS BLANK FOR CUSTOMER NOTES

THIS PAGE IS BLANK FOR CUSTOMER NOTES



www.premierhazard.co.uk

WARNING THE WORLD®

Emergency Service and Utility Warning Systems

Premier Hazard Ltd., YO16 4SJ, <http://www.premierhazard.co.uk>,

Tel.: +44(0)113 239 1111, email: info@premierhazard.co.uk

© 2013 Premier Hazard Ltd. A member of the Public Safety Equipment group of companies

