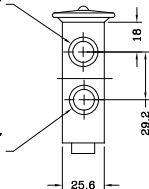
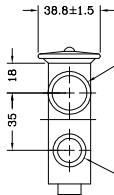
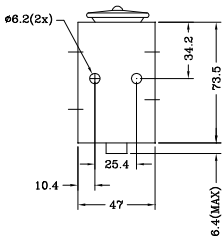


FROM EVAPORATOR
COIL 3/4"-18 N.S.-2B
1/2" O.R. FEMALE
SHORT PILOT



TO EVAPORATOR COIL
3/4"-18 N.S.-2B
1/2" O.R. FEMALE
SHORT PILOT



TO COMPRESSOR SUCTION
7/8"-18 N.S.-2B
5/8" O.R. FEMALE
SHORT PILOT

LIQUID INLET FROM
RECEIVER DRIER
5/8"-18 UNF-2B
3/8" O.R. FEMALE
LONG PILOT

NOTES:

VALVE RATED AT 2 TON R134A

ANNOXIDIZED ALUMINUM BODY
AND STAINLESS STEEL POWER ELEMENT.

MCC 37

CHECK BY:

DATE:

SYM PCS PART NO.

DESCRIPTION

SCALE: NTS

BY: NZ

DATE: MAR 09, 2001

DWG: P3.26.800-5630

26-0190
BLOCK VALVE



Mobile Climate Control Inc.
Norrtälje - Sweden



METRIC

THIS PRINT IS PROVIDED ON A RESTRICTED BASIS AND IS NOT TO BE USED IN ANY WAY DETRIMENTAL TO THE INTERESTS OF MOBILE CLIMATE CONTROL INC.

SYM	DESCRIPTION	DATE	BY
	REVISION		