



BlazeCut Fire Suppression Systems

Drawing Reference:
DLP KIT

System Part Number:
CFK118-2

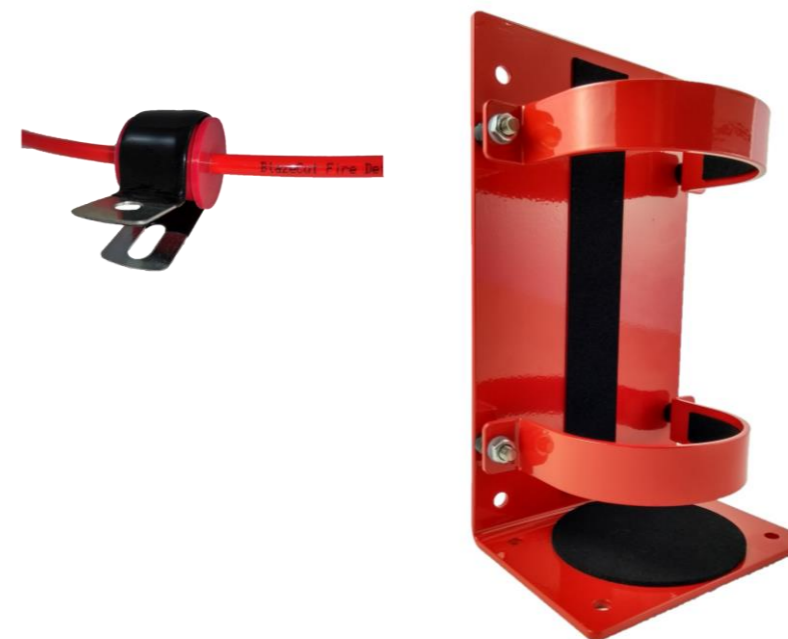
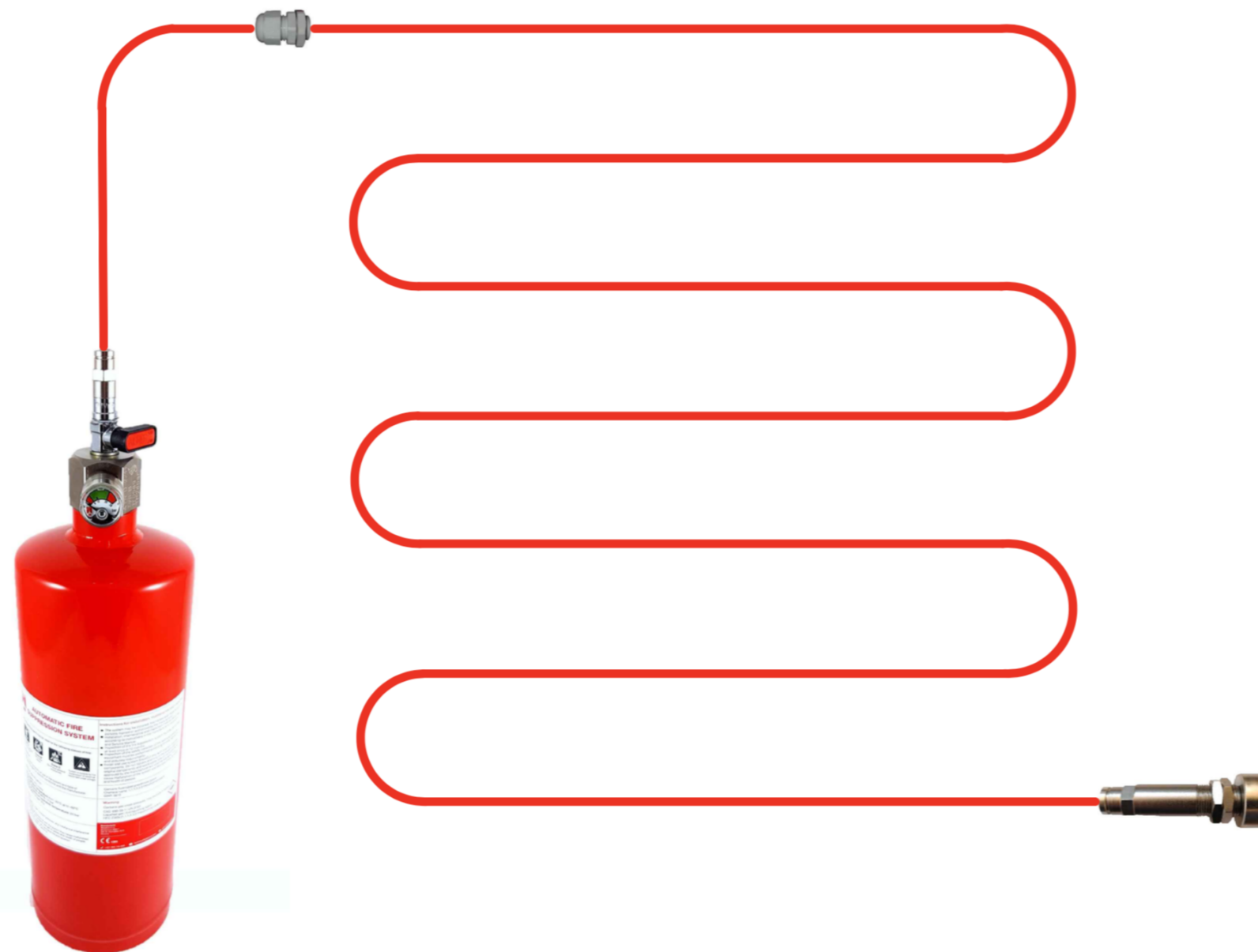
System Description:
C Series DLP Kit
LOP valve, 2.5kg FK-5-1-12 fire agent, 10m x 8mm BlazeTube, heavy duty cylinder bracket and fittings. **READY TO INSTALL.**

Design Notes:

Customer Reference:
Kaha - Finland

Drawn By:
BlazeCut

Date:
2nd October 2021



Quantity	Description
1	2.4 L empty cylinder
1	Dip tube straight with cut bottom for Gas and Powder 2.4 L cylinder
1	Label for cylinder - FK-5-1-12, 110 x 140 mm, English
1	DLP single outlet valve series "118", 8mm Push in fitting, FK-5-1-12 gauge
2.5	FK-5-1-12, 1 KG
1	Cylinder bracket heavy duty for 2.4 L cylinder
10	BlazeTube 8 mm, red, 170°C, per metre
1	End of line adapter 8 mm push in, without pressure gauge, stainless steel and
1	Pressure gauge for FK-5-1-12
40	Cable tie, increased heat resistance up to +125°C, 3.6 x 140 mm, black
1	Cable gland with locknut, polyamide for detection tube (6-8 mm), 12mm steel tube and electrical cable, 18.5mm hole for mounting
1	Ball valve anti tamper safety lock with lock seal
1	Label General warning for C Series 150 x 100 mm, English
4	Label Fire detection for BlazeTube and BlazeWire, 135 x 25 mm, English
1	BlazeCut promotional sticker, 110 x 68 mm