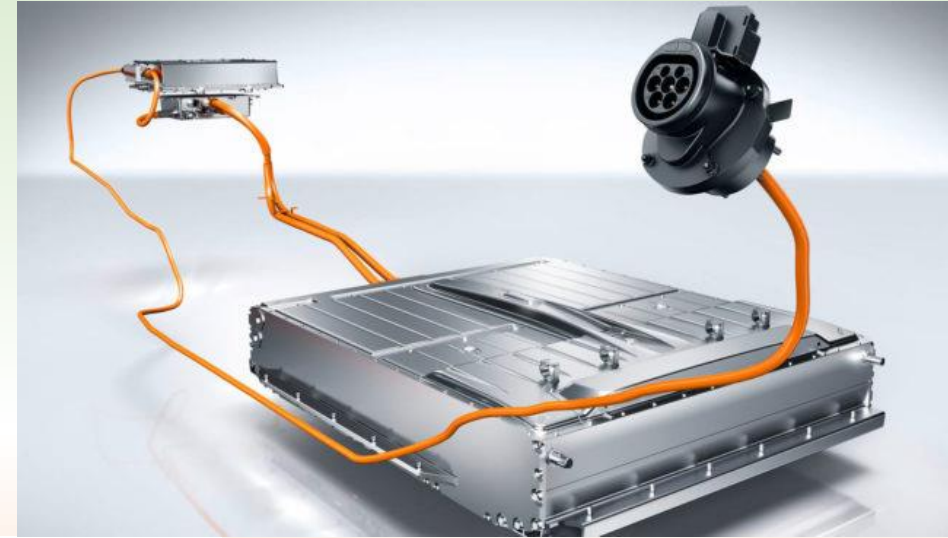
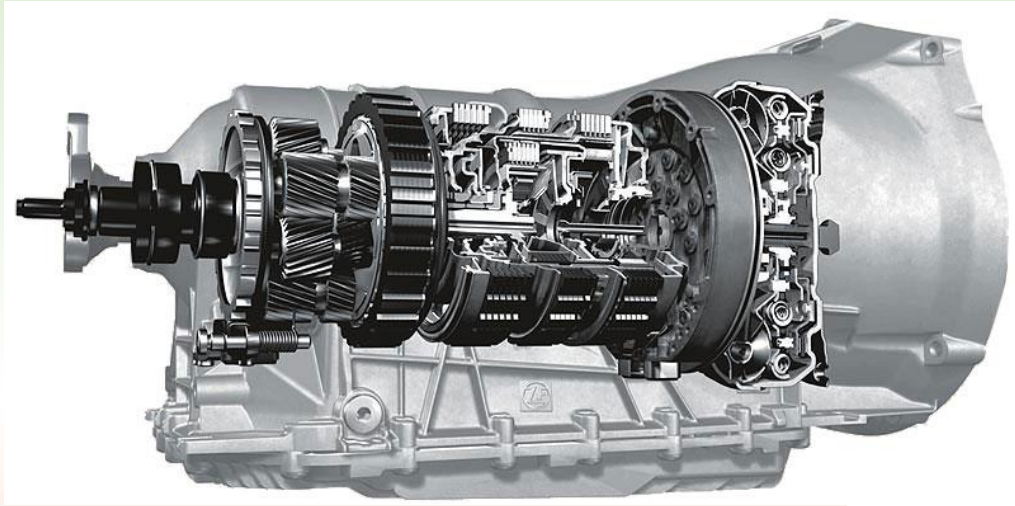


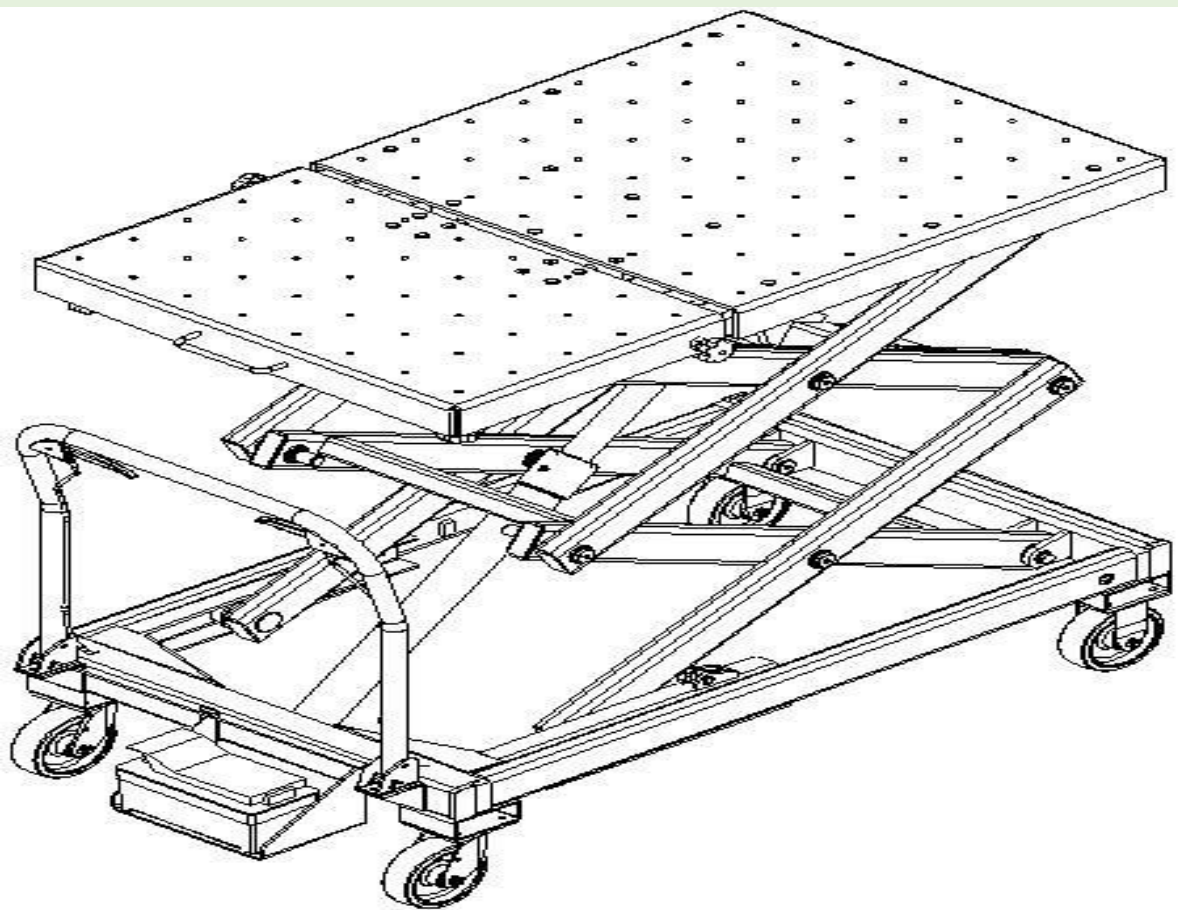


# GT SBP Unique trolley for battery pack of electric cars by GALTA SRL



# SBP BATTERY LIFT CAN BE USED FOR SEVERAL USE INSTALLING GEAR BOX – ENGINES – BATTERY







We always look at the **future**: the world of cars is changing.

### Electrical cars

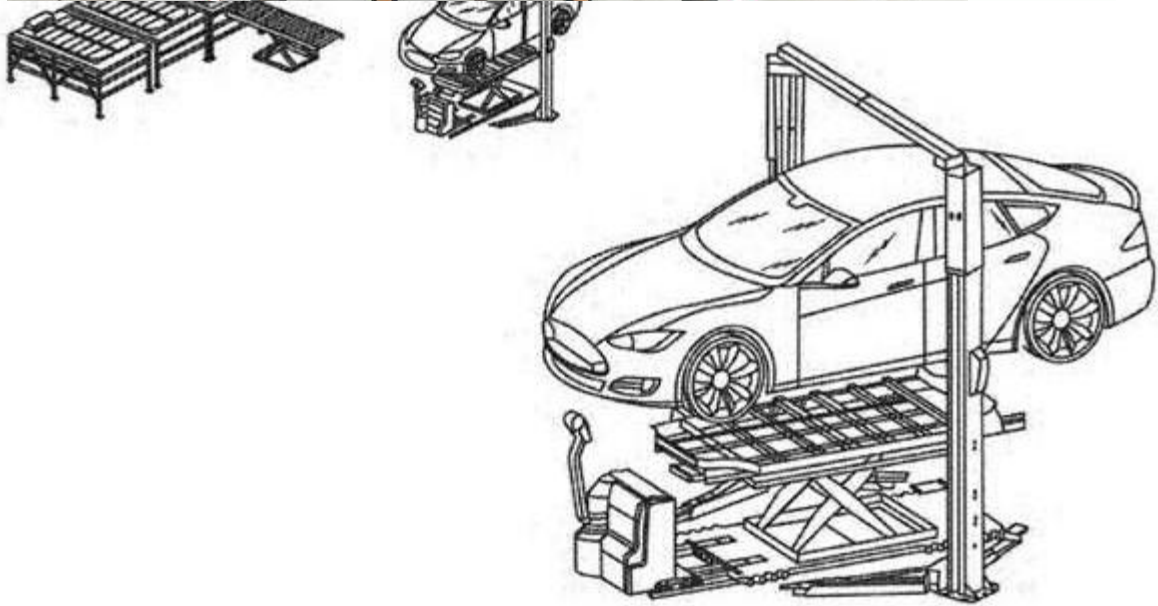
are entering more and more into our world,  
and the necessity to give a high quality assistance to these new  
vehicles has become our main objective.

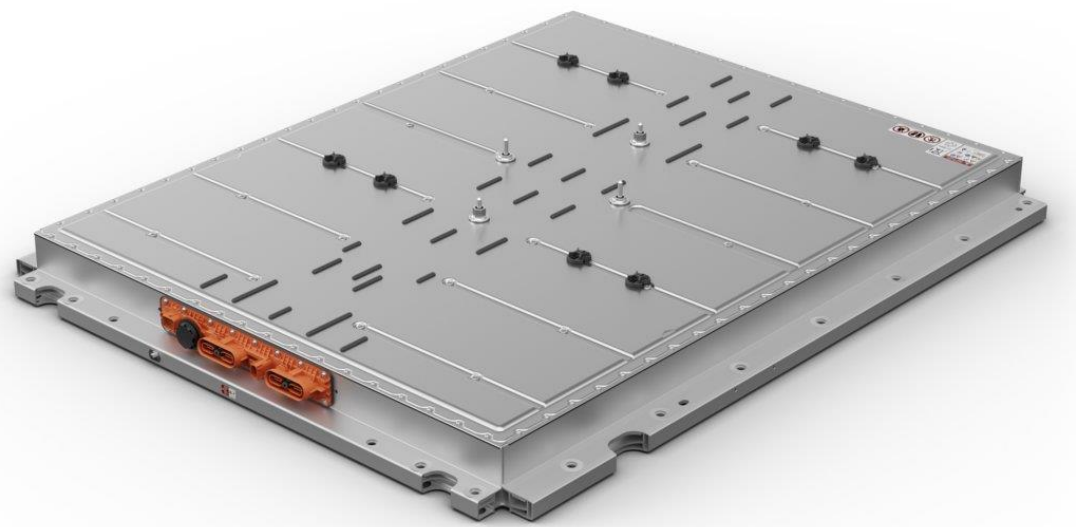


To make any sort of intervention or maintenance work on electric cars,  
You have to **dismount the batteries** first.













The company GALTA has the solution  
for all **electrical cars!**

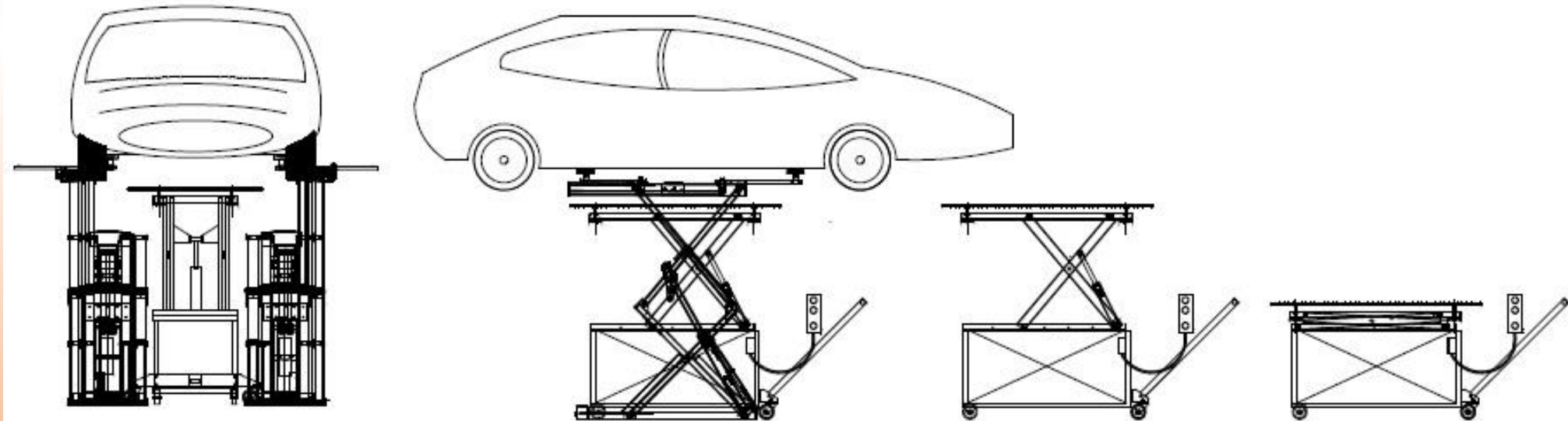


[www.galta.it](http://www.galta.it)



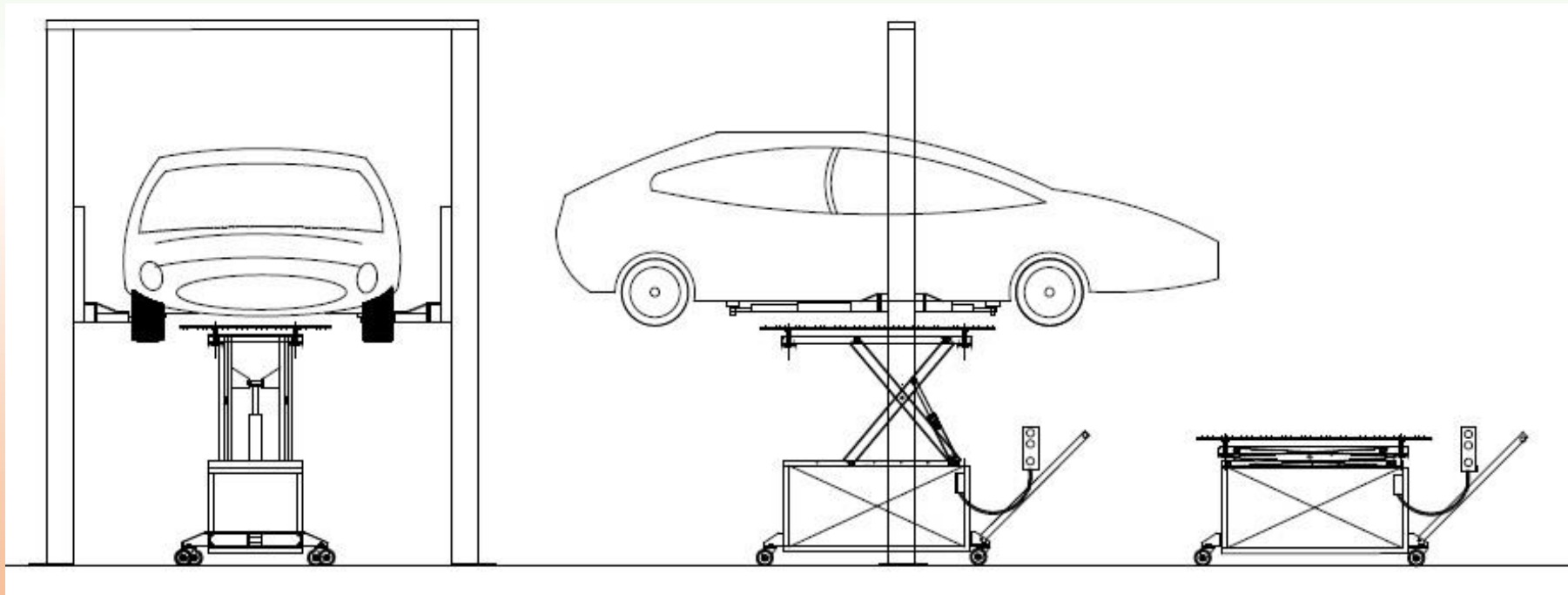


We have designed a special and **GT SBP 1000 trolley**  
To help you dismounting the batteries!





Specially designed to be **matched with our PRATIK**,  
It can be used also with other kind of lifts.





# CHARACTERISTICS OF THE PRODUCT AND MAIN STRONG POINTS





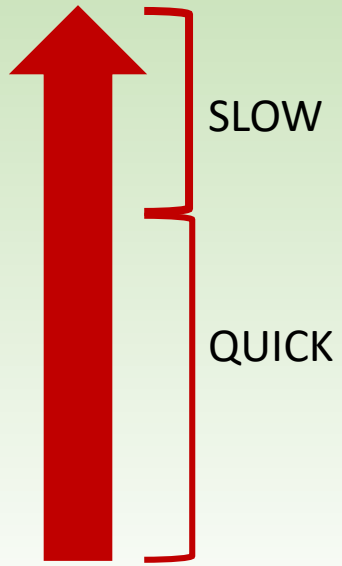
## TECHNICAL CHARACTERISTICS

<b>Max capacity</b>	1.000 kg	<b>Weight</b>	350 kg
<b>Lifting time</b>	15 sec	<b>Power supply</b>	air
<b>Lowering time</b>	8 sec	<b>Max. working pressure</b>	Bar 120
<b>Lifting Height</b>	From 570 to mm 1700		
<b>Dimension base</b>	750 mm width	1500 mm long	Hydraulic functioning



You can use it for:

- Dismount the battery pack of electric cars
- Dismount the battery pack of hybrid cars
  - Gearbox exchange
  - Motor parts exchange
- Many more applications



**soft speed:**

Quick lifting until a certain point

Then slow lifting approach to the batteries

This way you can be sure **not to damage the batteries** or sensible parts



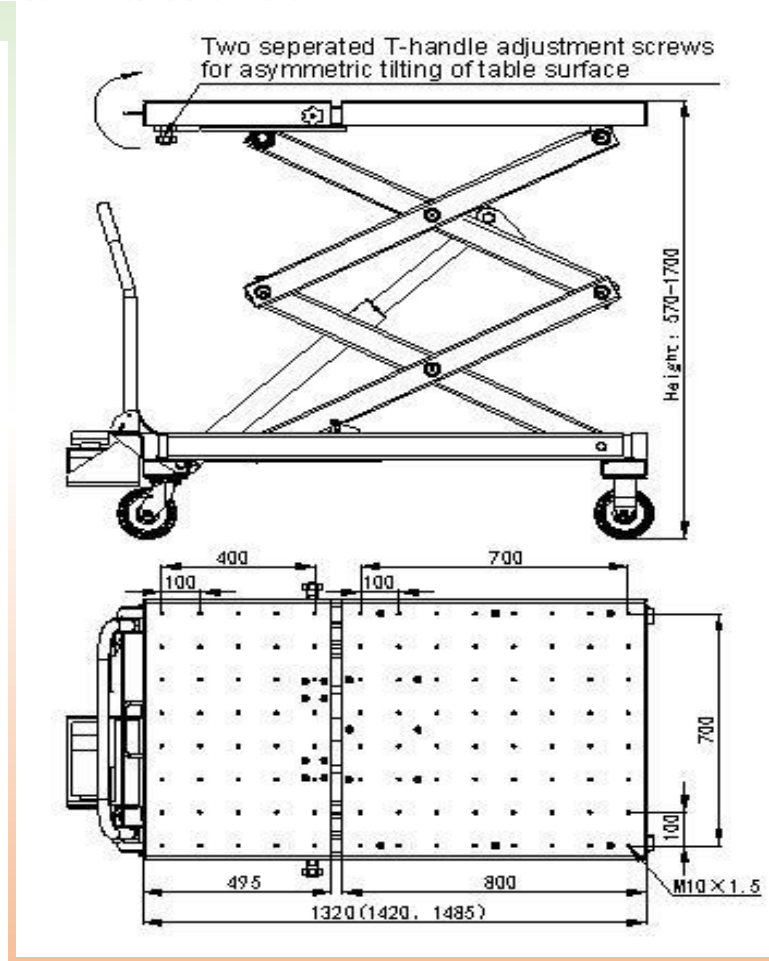
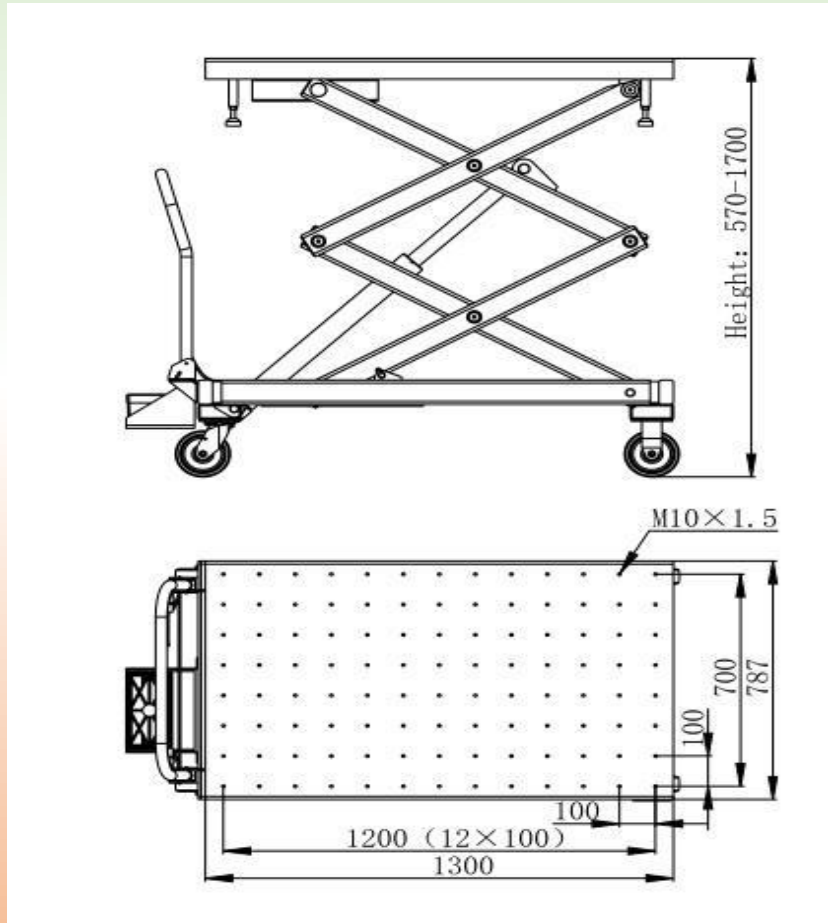


## **Central stabilization bar:**

The central stabilization bar can swing slightly

For a **perfect centering and positioning**  
of the trolley under the batteries

This way you can be sure to center perfectly the batteries location  
for a perfect dismounting and mounting





Production  
Made in Italy 100%



All components are made in Italy

[www.galta.it](http://www.galta.it)



The company GALTA Srl has the key for the future!

Thank you for your attention



**Via Vittorio Lombardi 19/21**  
**36075 Montecchio Maggiore (Vi) - ITALIA**  
**[www.galta.it](http://www.galta.it)**

[www.galta.it](http://www.galta.it)