

**15U  
4119**

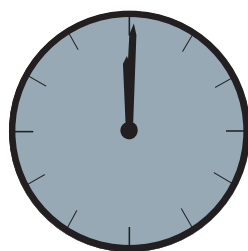
# Isuzu D-Max; Modell 2012

Roll bar 60 / Überrollbügel 60 / Arceau 60



## **ASSEMBLY INSTRUCTION**

Montageanleitung • Instructions de montage



**60 Minuten**

**Artikel-Nr:**

15U 4119 stainless steel  
15U 5119 black steel  
15U 9119 Assembly-kit

Revision 2: 07.11.2012



# 15U 4119

## Isuzu D-Max; Modell 2012

Roll bar 60 / Überrollbügel 60 / Arceau 60

### Parts list / Teileliste / Lista de accesorios

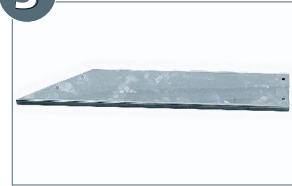
**1** 15U4119.1 / 15U5119.1



**2** 15U4119.2R/15U4119.3L



**3** 15U4126R/15U4127L



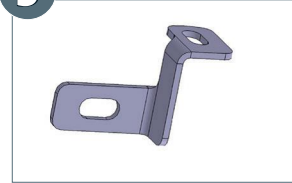
### 15U9119

**4** 15U5091



4x

**5** 15U5138R/15U5139L



**6** 13H5024



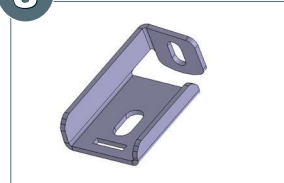
2x

**7** 13H5240



2x

**8** 15U5140R/15U5141L

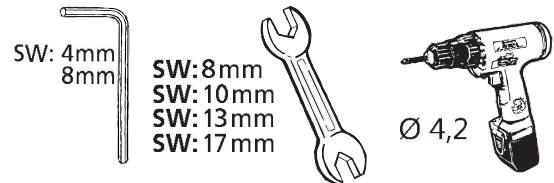


**9** pre-installed

4x



### Required tools / Benötigte Werkzeuge / Outillage requis



<b>a</b>		Gefu-2 Schraube M5x16	<b>8x</b>
<b>b</b>		M6x16; ISO 7380 A2	<b>8x</b>
<b>c</b>		M10x40; DIN 933 Zn	<b>2x</b>
<b>d</b>		M8x20; DIN 933 A2	<b>4x</b>
<b>f</b>		M10x30; DIN 912 A2	<b>2x</b>
<b>g</b>		M6; DIN 985 A2	<b>8x</b>
<b>h</b>		ø8; DIN 127 A2	<b>4x</b>
<b>i</b>		ø6,4; DIN 125 A2	<b>8x</b>
<b>k</b>		ø6,4; DIN125 Natur PA6.6	<b>16x</b>
<b>m</b>		ø8,4; DIN 125 A2	<b>4x</b>
<b>n</b>		ø10; DIN 127 Zn	<b>2x</b>
<b>o</b>		ø10,5; DIN 9021 Zn	<b>2x</b>
<b>p</b>		SW 17 mm	<b>2x</b>

### Artikel-Nr:

15U 4119 stainless steel  
15U 5119 black steel  
15U 9119 Assembly-kit

Revision 2: 07.11.2012

