

T B 1 5 - 1 8

indelB

trouble shooting

TB_15_18_(DC)_17-10-2019

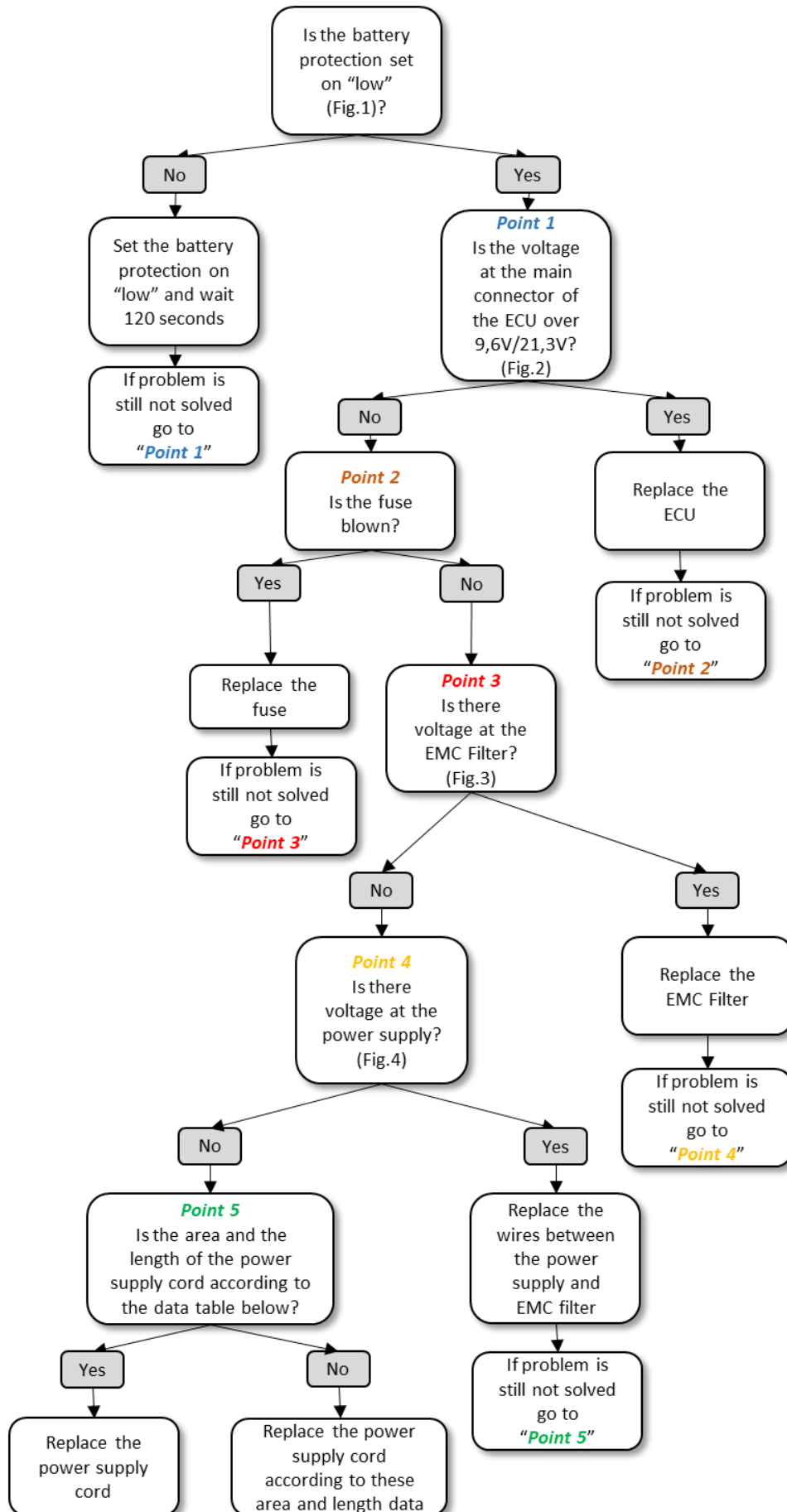
T B 15 - 18

3 - 4	ERROR E1
5	ERROR R2
6	ERROR R3
7	ERROR R4
8	ERROR R5
9	ERROR R6
10	ERROR -
11	REFRIGERATOR DOES NOT COOL BUT COMPRESSOR RUNS
12	REFRIGERATOR IS NOISY
13 - 15	PICTURES
16	HOW TO REPLACE THE TEMPERATURE SENSOR
17	HOW TO REPLACE THE FAN
18	HOW TO REPLACE THE EMC FILTER
19 - 20	HOW TO REPLACE THE ECU
21 - 22	HOW TO REPLACE THE DISPLAY
23	HOW TO REPLACE THE LID
24	HOW TO REPLACE THE LAMP

indelB

TB_15_18_17-10-2019

• ERROR E1: Battery protection cut-out

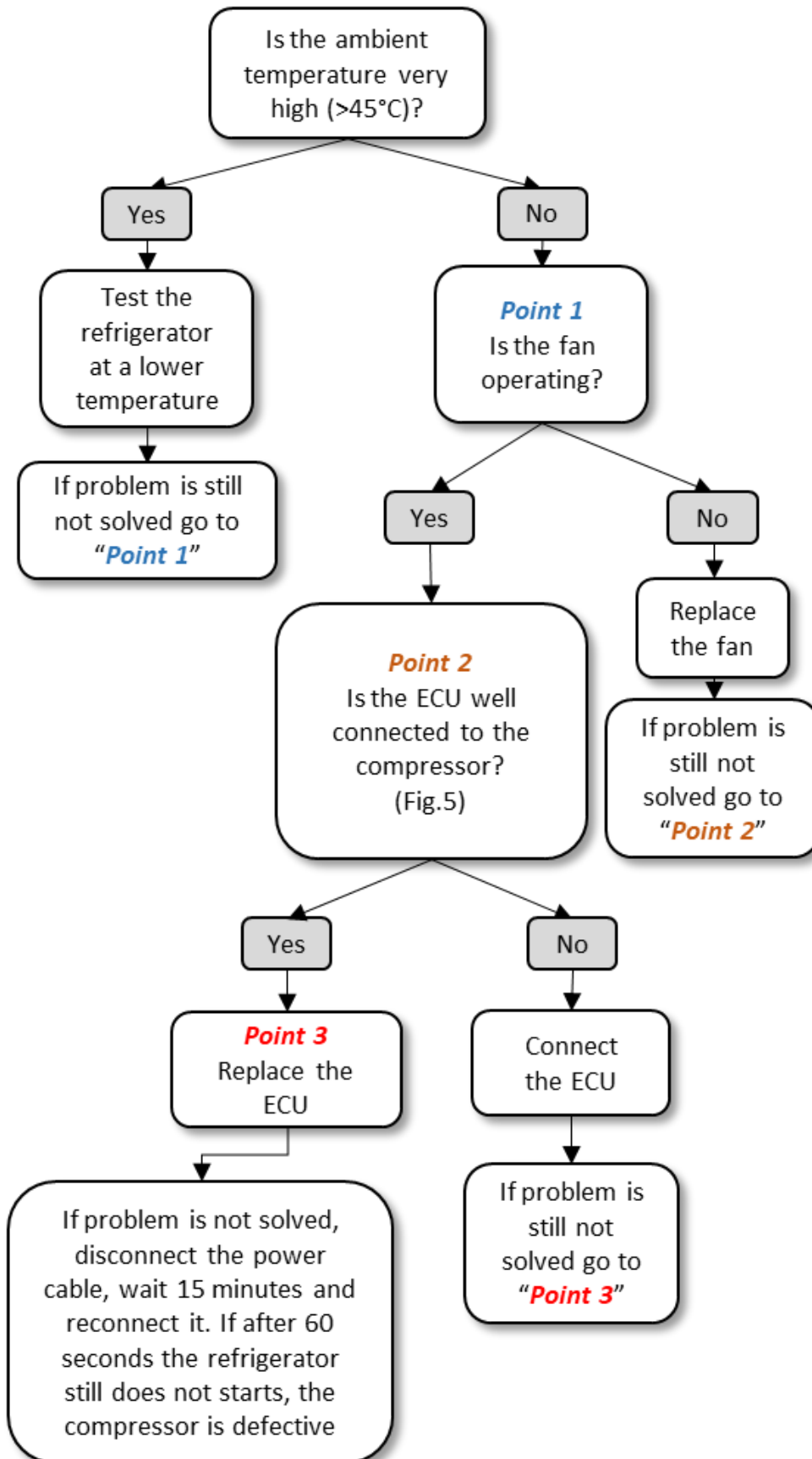


SEZIONE CAVI	LUNGHEZZA MAX. CAVI METRI	
	12V	24V
2,5 (AWG 13)	2,5 (8 FT)	5 (16FT)
4 (AWG 11)	4 (13 FT)	8 (26 FT)
6 (AWG 9)	6 (20 FT)	12 (40 FT)

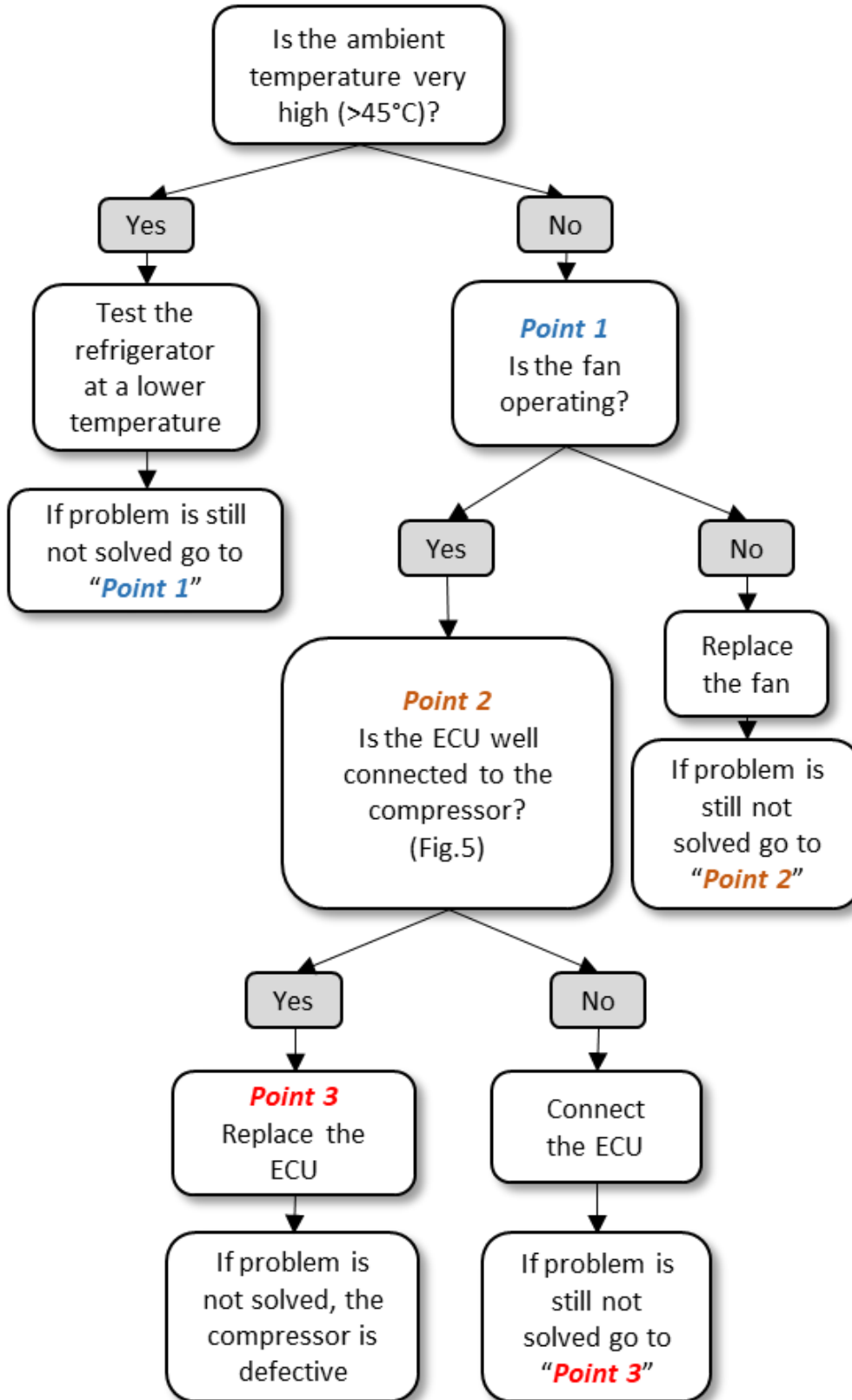
- **ERROR R2: Fan over-current cut-out**

This error is caused by an over-current that arrived at the fan. In this case you must replace the fan (see “How to replace the fan”).

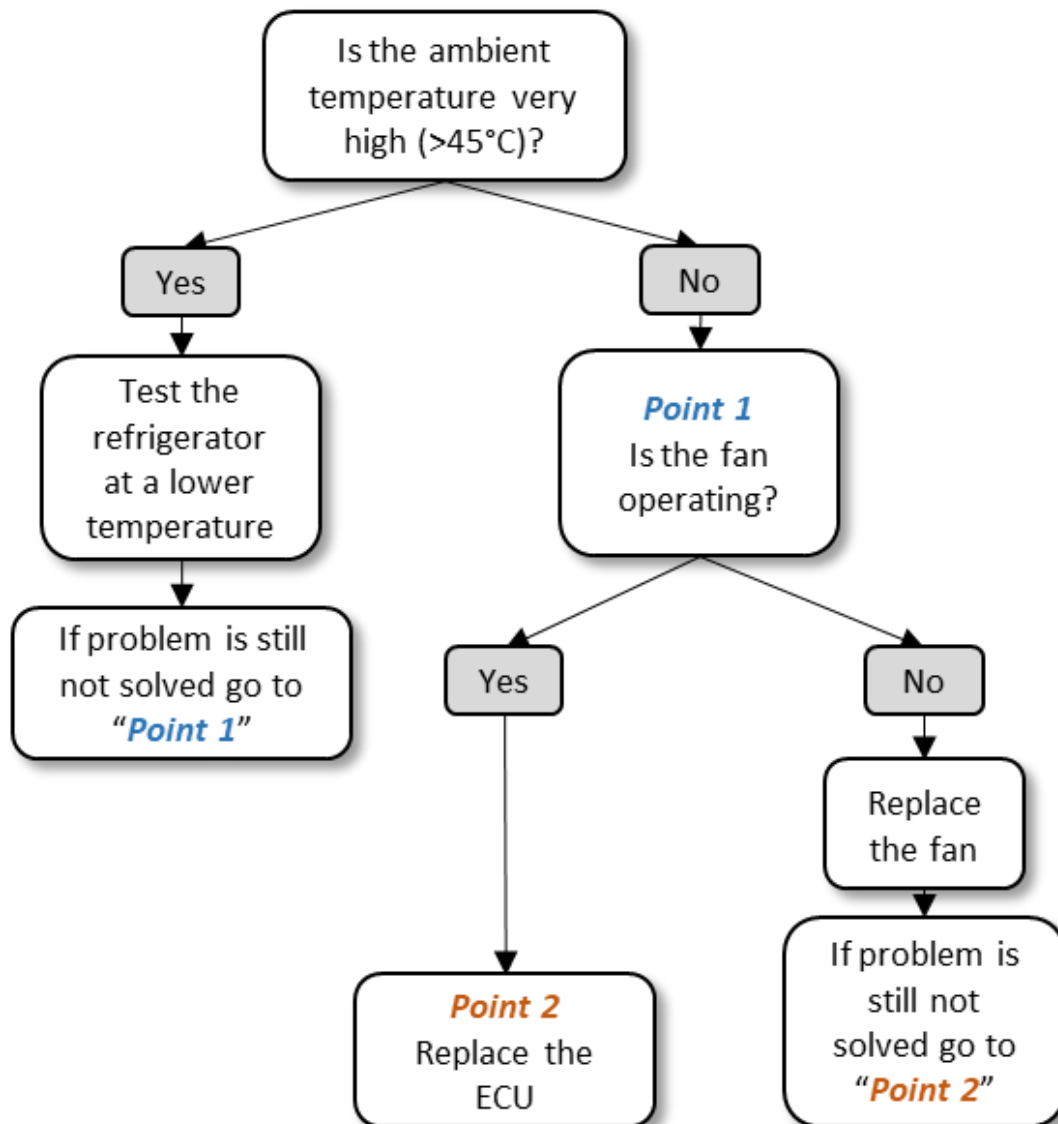
• ERROR R3: Motor start error



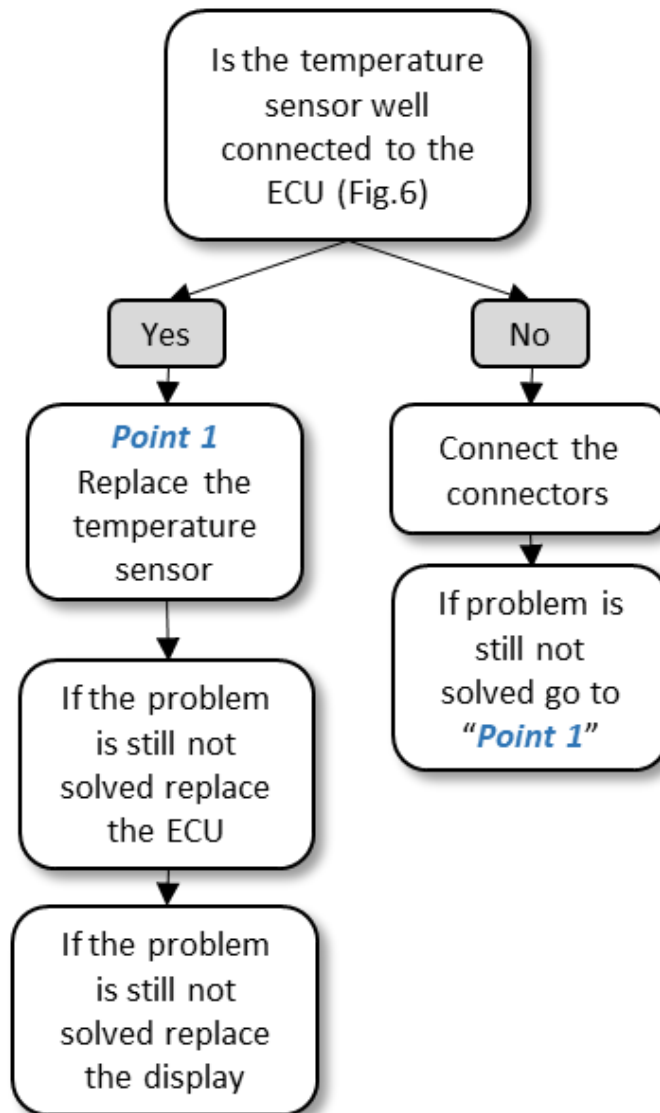
- ERROR R4: Minimum motor speed error



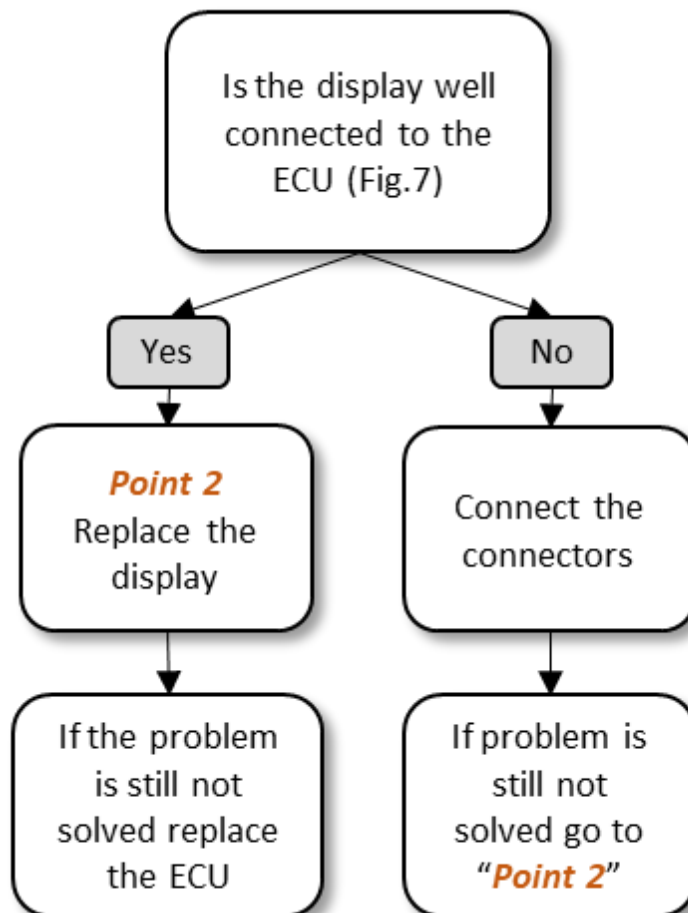
- ERROR R5: Thermal cut-out of electronic unit



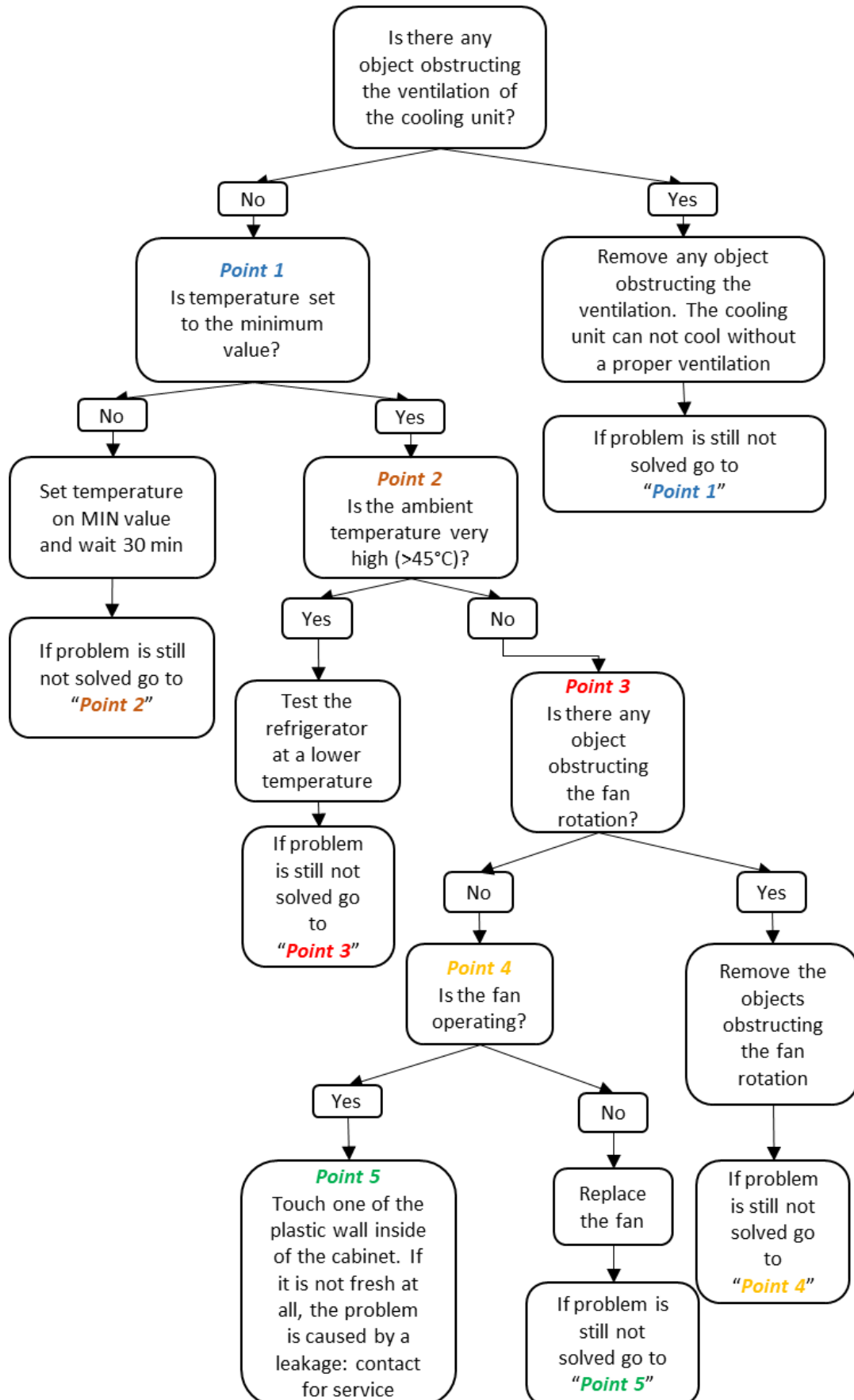
- ERROR R6: Faulty temperature sensor



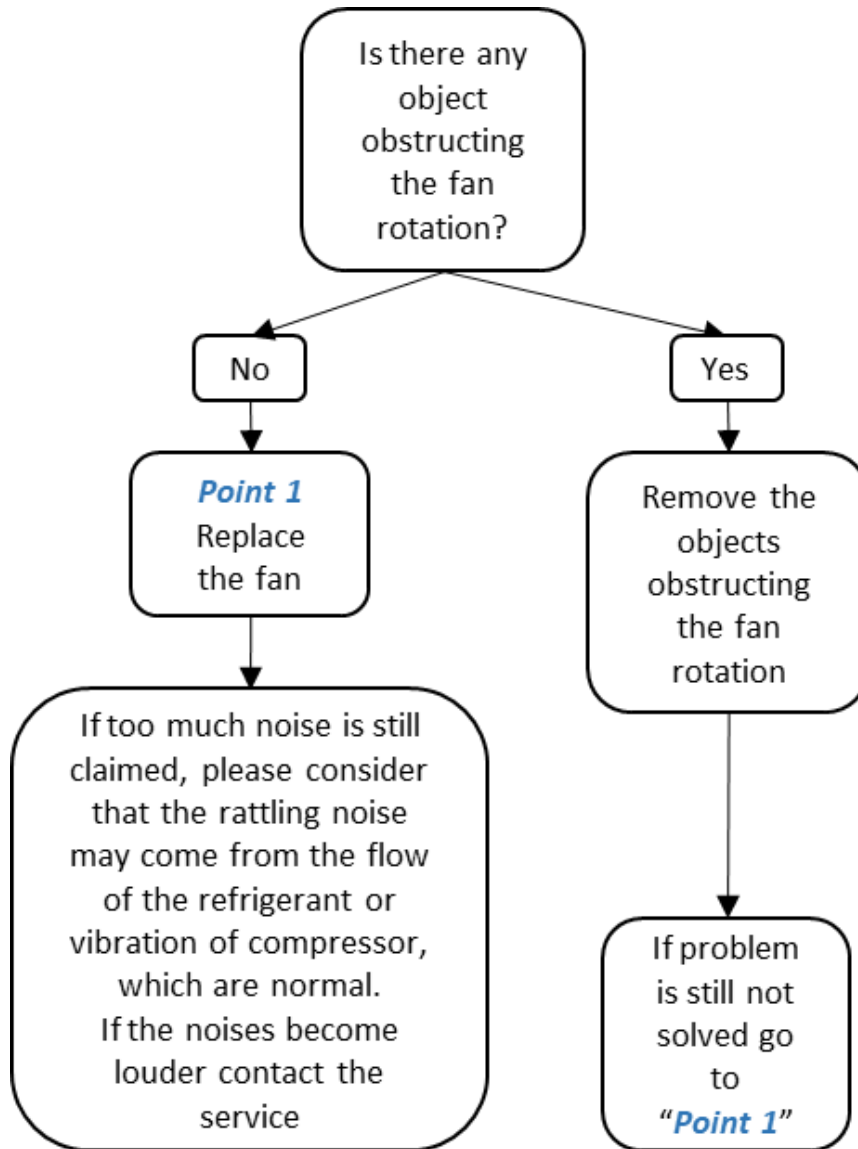
- ERROR - : No communication between display and ECU



REFRIGERATOR DOES NOT COOL BUT COMPRESSOR RUNS



REFRIGERATOR IS NOISY



PICTURES



Fig. 1

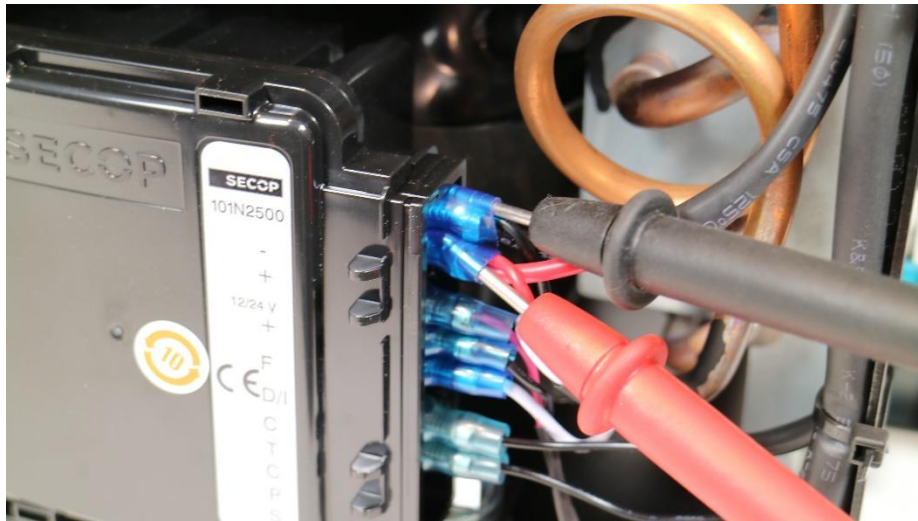


Fig. 2

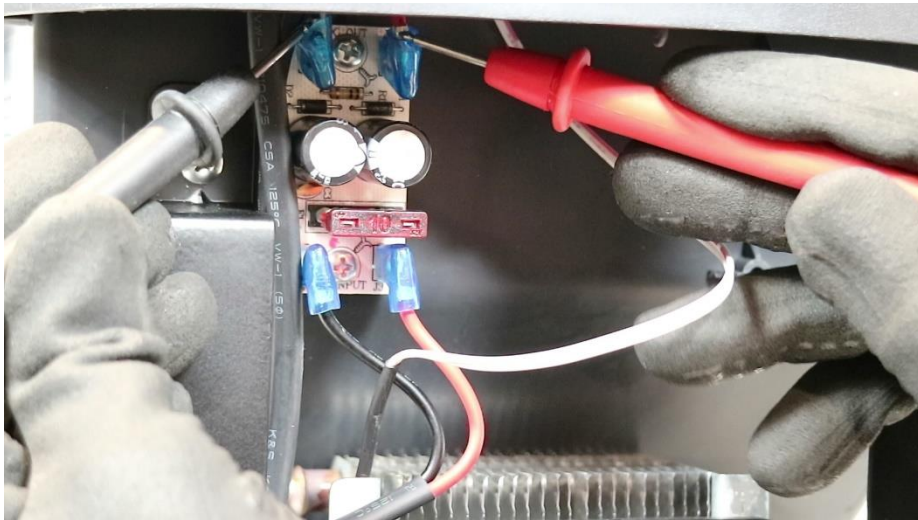


Fig. 3

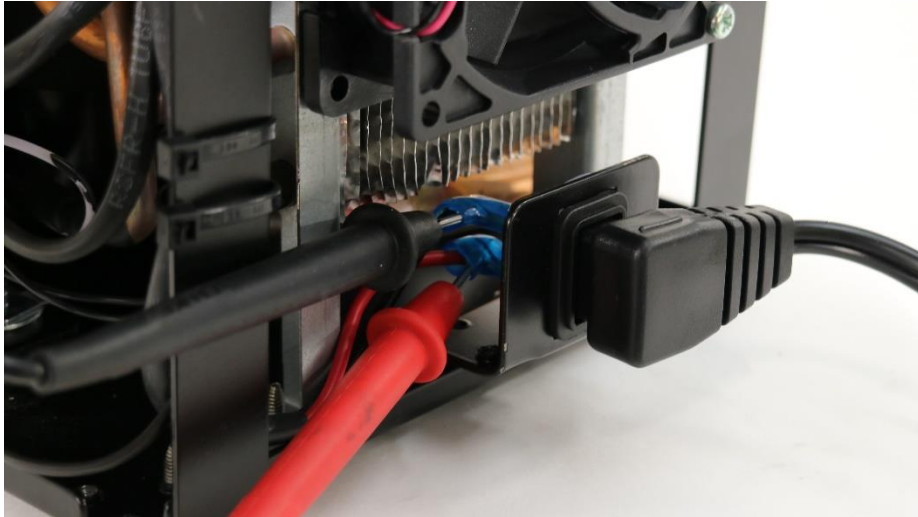


Fig. 4

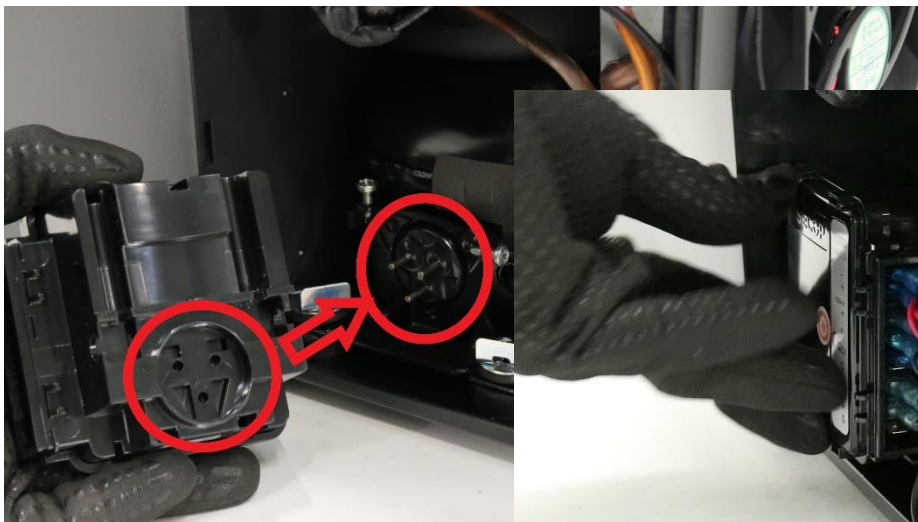


Fig. 5



Fig. 6



Fig. 7

HOW TO REPLACE THE TEMPERATURE SENSOR



1. Cut the label and remove it



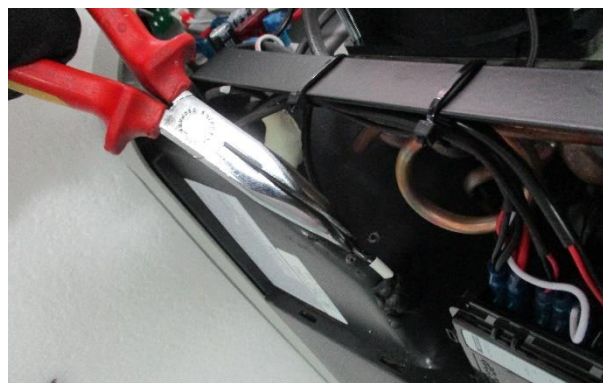
2. Unscrew the screws fixing the cover (7 screws)



3. Remove the carter (pull strongly)



4. Unscrew the 2 screws fixing the sensor



5. Disconnect the wire that connect the temperature sensor from the ECU, remove the sensor and reverse the procedure to replace it

HOW TO REPLACE THE FAN



1. Cut the label and remove it



2. Unscrew the screws fixing the cover (7 screws)



3. Remove the carter (pull strongly)



4. Unscrew the 2 screws fixing the fan, disconnect the wires connecting the fan and the ECU and reverse the procedure to replace it

HOW TO REPLACE THE EMC FILTER



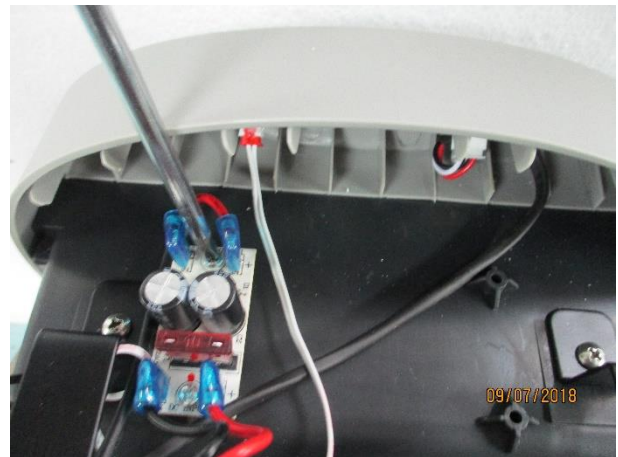
1. Cut the label and remove it



2. Unscrew the screws fixing the cover (7 screws)



3. Remove the carter (pull strongly)



4. Disconnect the wires, unscrew the 2 screws and reverse the procedure to replace the PCB

HOW TO REPLACE THE ECU



1. Cut the label and remove it



2. Unscrew the screws fixing the cover (7 screws)



3. Remove the carter (pull strongly)



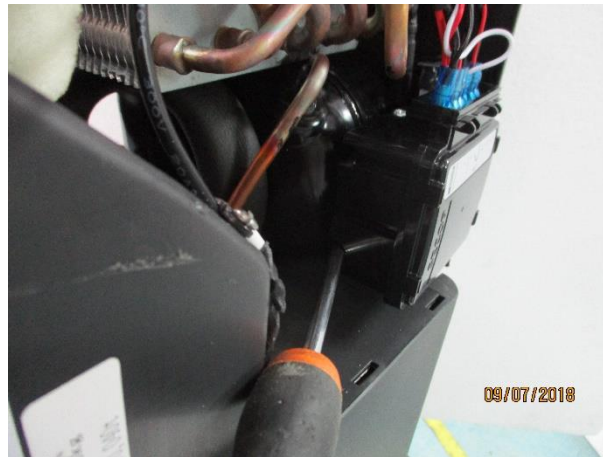
4. Unscrew the 4 screws fixing the metal base



5. Unscrew the 2 screws fixing the 2 brackets



6. Unscrew the screw fixing the ECU



7. Unscrew the screw fixing the ECU, disconnect all the wires and reverse the procedure to replace it

HOW TO REPLACE THE DISPLAY



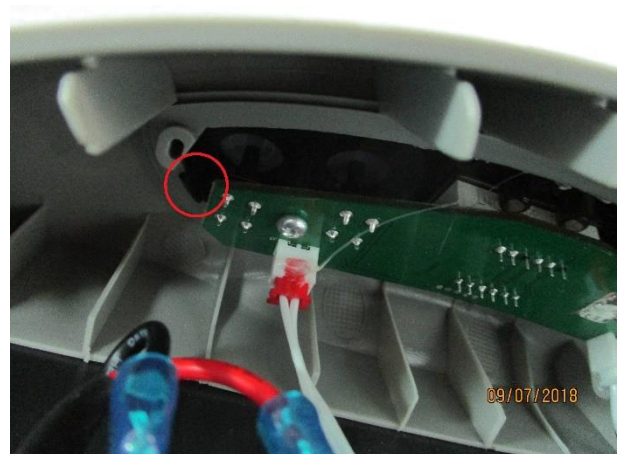
1. Cut the label and remove it



2. Unscrew the screws fixing the cover (7 screws)



3. Remove the carter (pull strongly)

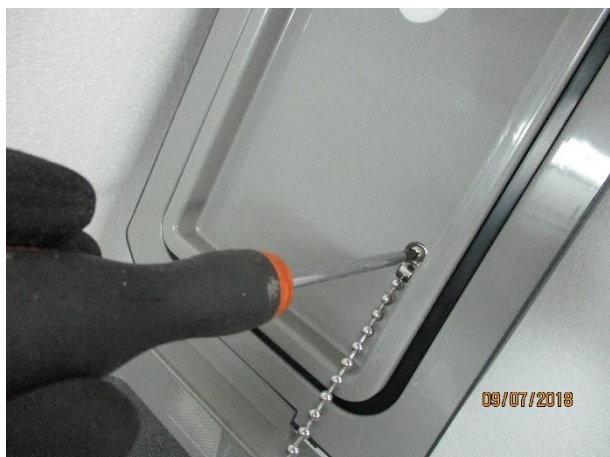


4. Press on the display's corner to remove it



5. Press on the electronic board to remove the display, disconnect the wires and replace it with a new display

HOW TO REPLACE THE LID



1. Unscrew the bolt



2. Insert an awl in the small holes to remove the lid

HOW TO REPLACE THE LAMP



1. Use a thin object (for ex. a cutter) as a lever to remove the plastic glass, then unscrew the screws behind it to remove the lamp