



**213533 Heavy Duty ProClip** Will block compartment.

Center mount, High strength mounting platform.

Extra strength mounting platform for installation of heavier devices. You can keep your device in a holder or attach it directly onto the mounting platform. The placement is optimized for touch screens, PDAs, taximeter screens and printers. You will have your device within easy reach, safe and convenient! The installation is quick and easy and will not damage the interior. Detailed installation instructions included.

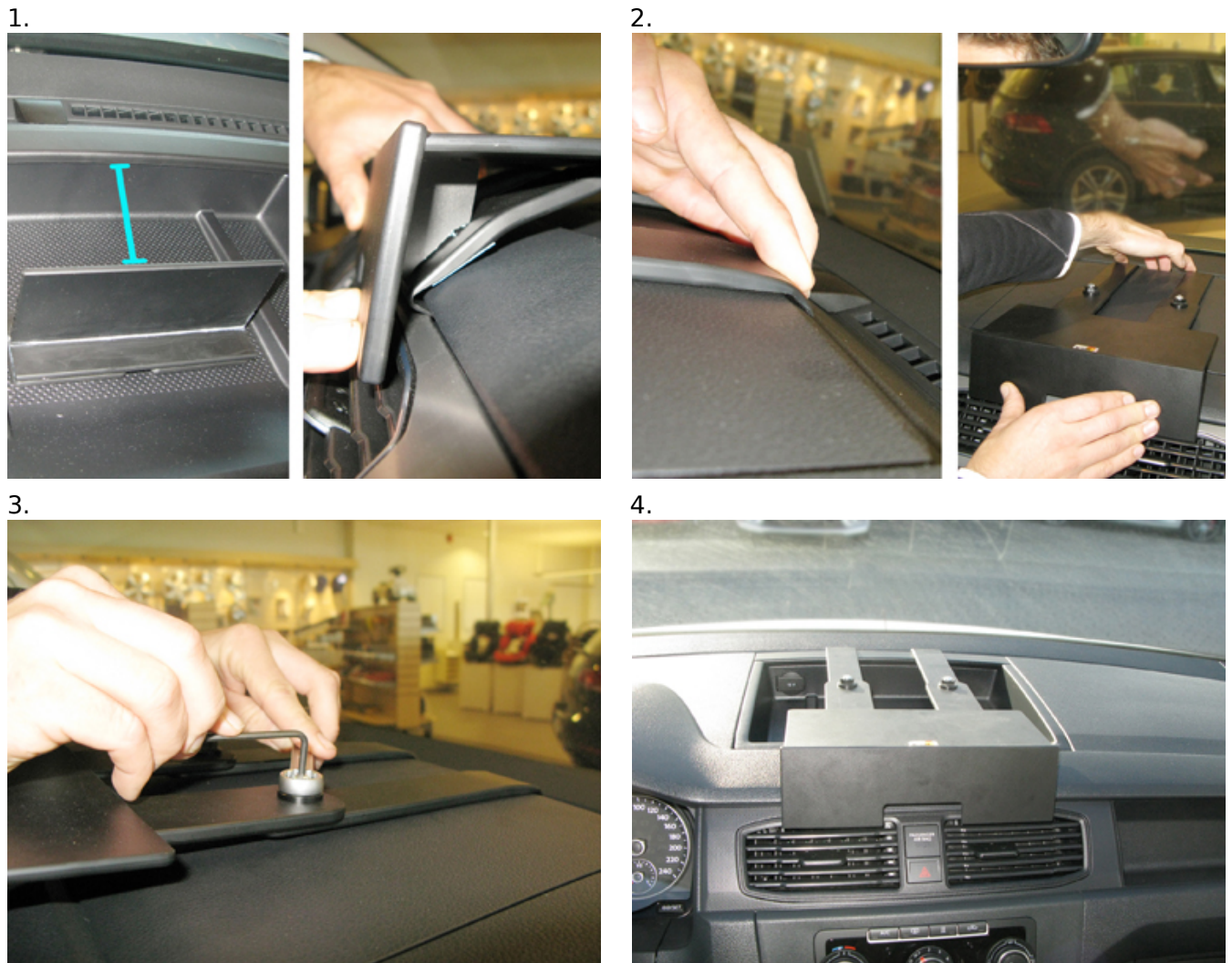
EAN: 7320282135331

**Item no 213533 fits:**

Volkswagen Caddy 16-19 (For Europe)

Volkswagen Caddy Life 16-19 (For Europe)

## INSTALLATION INSTRUCTIONS



Please read all of the instructions and look at the pictures before attaching the mount.

1. This mount fits for models both with and without a lid on the compartment on top of the dashboard. For models **WITHOUT** lid: place the enclosed distance part in the compartment, 11 cm from the edge of the compartment. For models **WITH** lid: do not use the enclosed distance part. The mount will block the compartment on top of the dashboard.

Press the angled edge on the lower parts of the mount into the gap between the frame surrounding the air vent and the dashboard.

2. Press the angled edge on the upper parts of the mount into the gap between the frame surrounding the air vent and the top of the dashboard.

3. Press the parts of the mount together until the mount reaches minimum length and hooks into place properly. Tighten the nut on the top of the mount so the parts are pulled together so the mount is firmly in place. Tighten the Allen screw with the enclosed key in order to fixate the position.

4. The mount is in place.

---