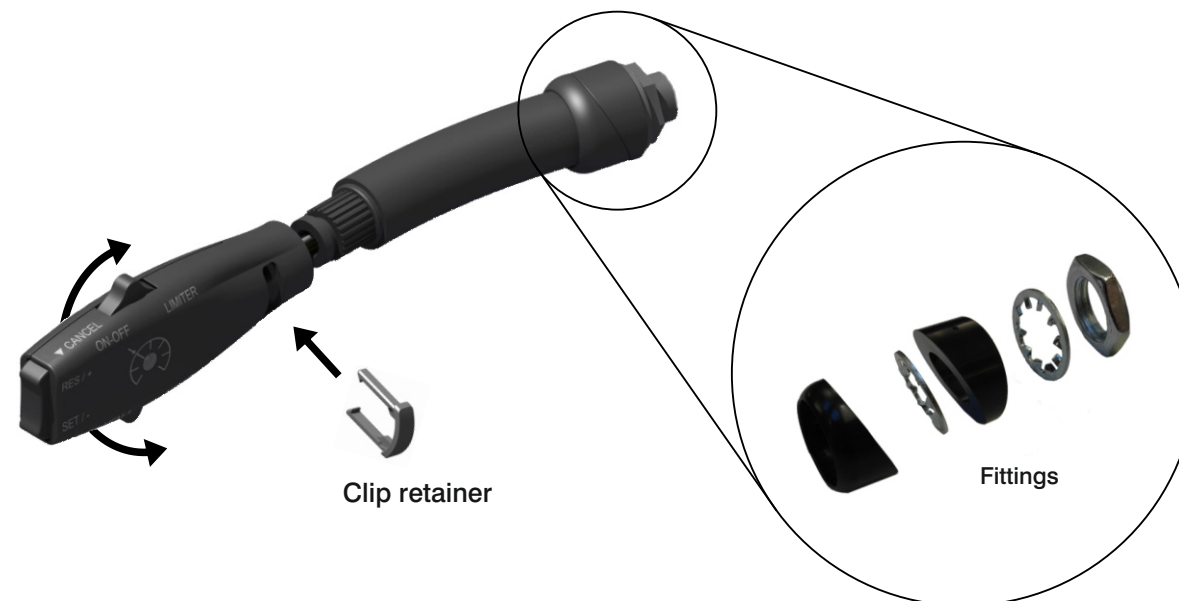
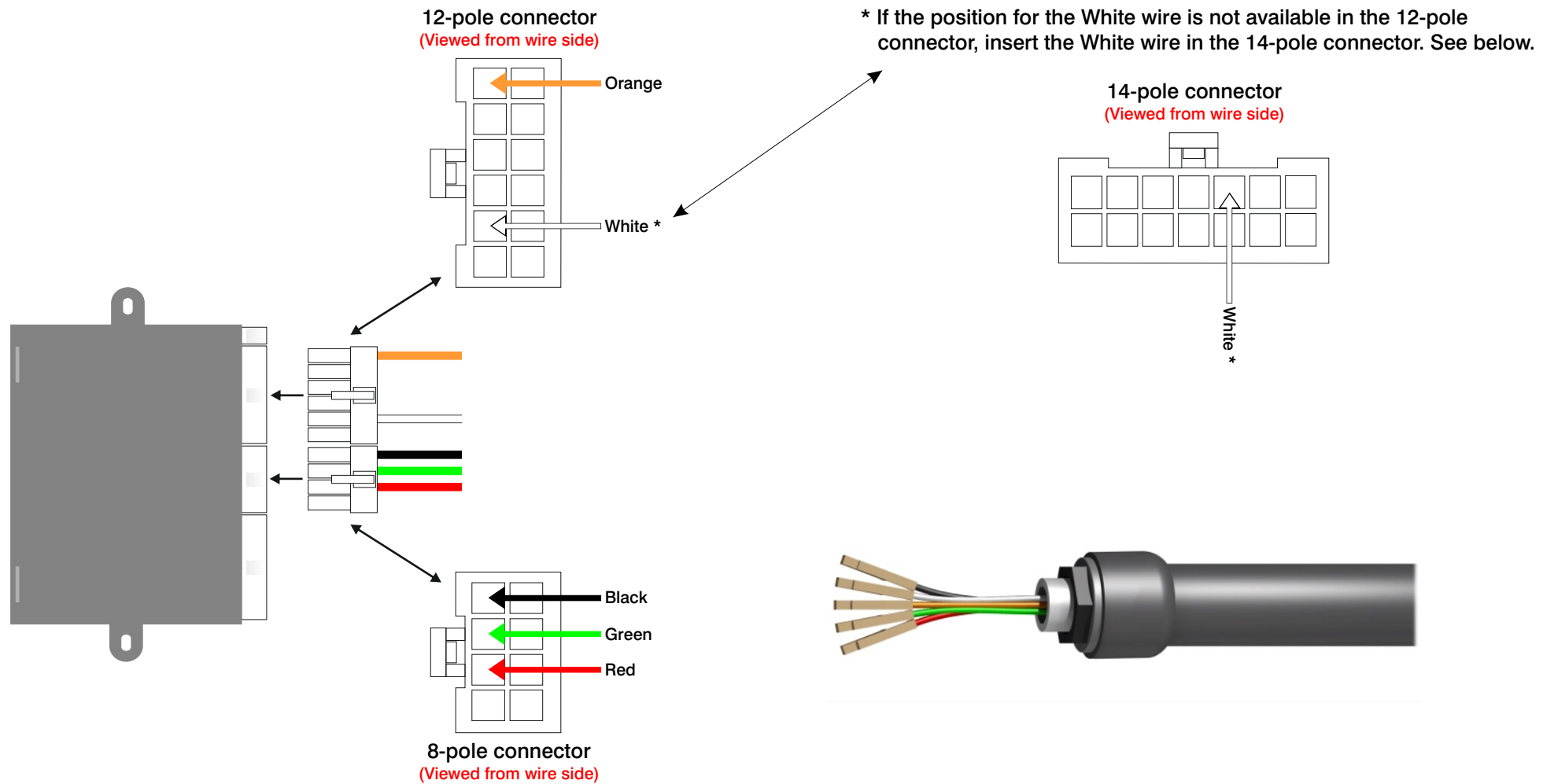


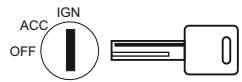
1. Find a suitable position for the switch on the left side of the covering around the steering column.
2. Mark the position and drill a 10mm hole. Make sure there is room for the switch and wires.
3. Use the enclosed fittings so the switch is angled to match the OE light and turn switch.
4. The switch head can be rotated as desired, and locked with the supplied clip retainer.
Be sure to insert the clip retainer correctly, and clicked all the way in, so the clip retainer is leveled with the surface.
5. Insert the wires in the connectors, see next page.
6. If the 12-pole connector is included in the kit for the cruise control, then use this 12-pole connector.
(The enclosed 12-pole connector in the kit for the cruise switch must be disposed).



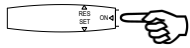


Trouble shooting guide.

Enable Diagnostic mode:



Put ignition on the vehicle



Within 2 seconds, press and hold the ON function



Wait until test LED lights up in RED color



Release ON function



Within 5 seconds



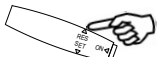
Activate SET function briefly



The test LED lights up in ORANGE color



Within 5 seconds



Activate RES function briefly



The test LED will flash in all 3 colors.
Continue the test according to the right.

Reaction to the individual tests, requires that the function is active

Test 1 - Brake function. Activate RES briefly. Test LED will flash orange 1 time.

CANbus installation: (No wires mounted on the brake connector).

1. Test LED lights up Red, and changes to green when pedal is depressed.

Analog installation: (Wires mounted on the brake connector).

1. If both brake wires are installed correctly, the test LED will light up green.
2. Hot side of brake is defective = test LED lights up red.
3. Cold side of brake is defective = test LED lights up orange.
4. Both sides of brake defective = test LED flashes all 3 colors.
5. When brake pedal is depressed, the test LED lights up orange.

Test 2 - Clutch function. Activate RES briefly. Test LED will flash orange 2 times.

CANbus installation: (No wires mounted on the clutch connector).

1. Test LED lights up Red, and changes to green when pedal is depressed.

Analog installation: (Wires mounted on the clutch connector).

1. If clutch wires are installed correctly, the test LED lights up green.
2. If clutch is defective, the test LED lights up red.
3. When clutch pedal is depressed, the test LED lights up red.

Test 3 - Accelerator pedal function (engine off). Activate RES briefly. Test LED will flash orange 3 times.

1. The test LED will slowly flash red/green.
2. Depressing the accelerator pedal will increase the freq. of the flashing.

Test 4 - VSS function (engine running). Activate RES briefly. Test LED will flash orange 4 times.

CANbus installation: (Purple wire is not connected).

1. The test LED will flash green if correct ID is received.

Analog installation: (Purple wire is connected).

1. The test LED will flash green when vehicle is moved.

Test 5 - TACHO function (engine running). Activate RES briefly. Test LED will flash orange 5 times.

CANbus installation: (Purple wire is not connected).

1. The test LED will flash green if correct ID is received.

Analog installation: (Purple wire is connected).

1. The test LED will flash green when RPM is raised.

Test 6 - Setup to Automatic gear. Activate RES briefly. Test LED will flash orange 6 times.

1. Activate and hold down the brake pedal.
2. Activate SET briefly = test LED lights up red.
3. Activate SET briefly again = test LED lights up orange. E-Cruise is set for automat gear. If this function is activated by mistake. The test procedure must be entered from start.

Setup to Manual gear.

1. Activate and hold down the brake pedal.
2. Activate SET briefly = test LED lights up green.
3. Activate SET briefly again = test LED lights up orange. E-Cruise is set for manual gear.