



WIPER MECHANISMS

CINEMATISMI



Compact Small (closed)
pag. 4



Compact Small (open)
pag. 5



Compact Medium
pag. 6



Compact Large
pag. 7

GEARMOTORS

MOTORIDUTTORI



MRT62-31
pag. 8-9



MRT62-35
pag. 10-11



MRT62-43 (Ø72)
pag. 12



MRT62-43 (Ø50,8)
pag. 13



MRT76
pag. 14-15



MRT90-45
pag. 16-17



MRT90-56
pag. 18



MRT62-TP1
pag. 19



MRT62-CNT
pag. 20



MRT50
pag. 21

WIPER ARMS

BRACCI



Adjustable single arm 9x2.5
pag. 22



Single arm 9x3
pag. 23



Single arm 10x3
pag. 24



Single arm 12x4
pag. 25



Adjustable pantograph arm 9x2.5
pag. 26



Pantograph arm 9x3
pag. 27



Pantograph arm 10x3
pag. 28



Pantograph arm 12x4
pag. 29

BLADES

SPAZZOLE



Blades
pag. 30



Blades "Truck"
pag. 31

Maahantuaja:



KAHA

Oy Kaha Ab
Ansatie 2
01740 Vantaa

www.kaha.fi
teollisuus@kaha.fi
puh 09 615 6800

Myynti
puh 09 615 68300
fax 09 615 68301



Research
Technology
High Quality



La divisione della OSLV Italia dedicata alla produzione di impianti per tergicristalli, realizza motoriduttori tergi, cinematismi, cinematismi compatti, bracci e spazzole che vengono impiegati su mezzi agricoli o per movimentazione terra, veicoli militari, autobus, treni, mezzi elevatori e automobili come Lamborghini e McLaren. Attraverso un attento studio delle esigenze dei singoli clienti ed una stretta collaborazione con lo staff tecnico, è possibile progettare soluzioni personalizzate.

OSLV Italia's sector dedicated to the production of complete wiper systems, realizes wiper motors, wiper mechanism, wiper compact kinetics, wiper arms and blades that are used and mounted on different means such as agricultural and earthmoving machines, industrial and military vehicles, trains, busses, forklifts and cars such as Lamborghini and McLaren.

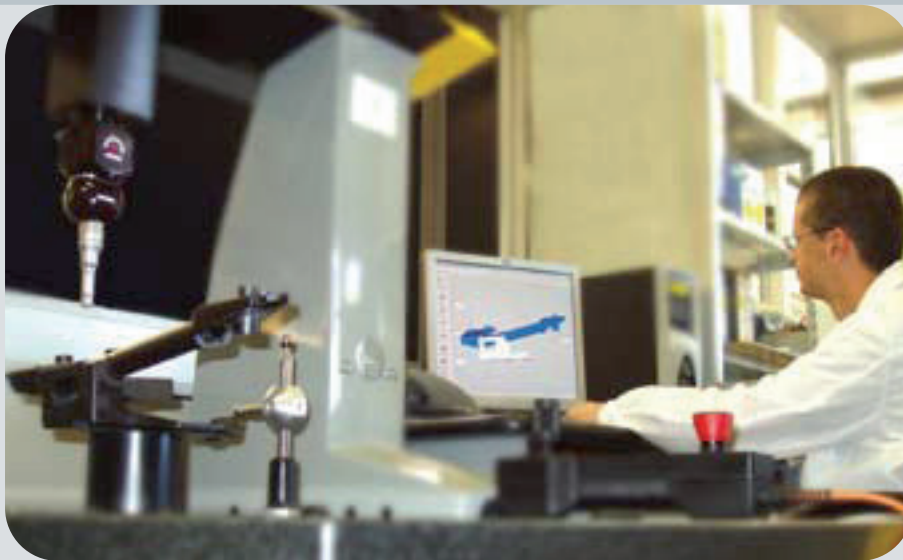
Through a careful analysis of each single inquiry and with the interaction between the customer and our technical staff, it is possible to develop customized solutions.

Le secteur de OSLV Italia qui se occupe de la fabrication de ensembles d'essuie glace, réalise moteurs essuie glace, tringleries, bras et balais essuie glace qui sont employées sur des moyens comme les véhicules agricoles et de terrassement, véhicules militaires, trains, autobus, éleveurs et automobiles comme Lamborghini et McLaren.

Par une étude soignée des exigences de chaque client, le personnel technique avec l'interaction du client même, réussit à concevoir des solutions innovantes et personnalisées.

In der Wischersysteme Abteilung von OSLV Italia, werden Wischermotoren, kompakte Kinematik, Wischerarme und Wischerblätter hergestellt, die in den unterschiedlichsten Mitteln eingebaut werden, sowie in Landwirtschaftsmaschinen, Erdbewegungsmitteln, Militärkraftfahrzeuge, Züge, Autobus, Gabelstapler und Autos wie Lamborghini und McLaren.

Auf der Grundlage eingehender Studien der Bedürfnisse jedes einzelnen Kunden und in Zusammenarbeit mit dem Team des technischen Büros, werden innovative und kundenspezifische Lösungen ausgearbeitet.



SINCERT



La OSLV Italia ha due distinti settori produttivi:

- **IL SETTORE AUTOMAZIONE** - è specializzato nella produzione di motori e motoriduttori a corrente continua e di attuatori elettrici.
- **IL SETTORE TERGENZA** - si occupa di progettare e realizzare completi sistemi di tergicristalli per veicoli.

La peculiarità della nostra azienda è nella grande flessibilità produttiva, che ci permette di personalizzare i prodotti con le specifiche dei clienti, sposando al meglio le loro esigenze anche in termini di consegna.

OSLV Italia has two different production lines:

- **The Automation Sector** - which is specialized in the production of DC motors and gearmotors as well as electrical actuators.
- **The Wiper Sector** - which develops and produces complete wipersystems for vehicles.

The company distinguishes itself for the flexibility in manufacturing that enables it to customize products respecting customers' requests also in view of the lead time.

OSLV Italia a deux lignes de production différentes:

- **Le Secteur Automatisation** - il est spécialisée dans la production des moteurs et motoréducteurs en courant continu e des vérins électriques.
- **Le Secteur d'Essuyage** - il s'occupe de la réalisation des ensembles d'essuieglace complets pour véhicules.

La force de notre entreprise est la flexibilité productive que nous permet de personnaliser les produits selon les spécifications des clients en ligne avec leur exigences aussi en ce qui concerne les délais.

OSLV Italia hat zwei verschiedene Produktlinien:

- **Der Bereich Antriebstechnik** - ist in der Herstellung von Gleichstrom - Getriebemotoren und Motoren, sowie Spindelantriebe spezialisiert.
- **Der Bereich Wischersysteme** - entwickelt und produziert komplette Wischersysteme für Fahrzeuge.

Die Stärke unseres Unternehmens liegt in der großen Flexibilität in der Fertigung, die es uns ermöglicht, den Lieferzeiten gerecht zu werden.



COMPACT SMALL (closed)



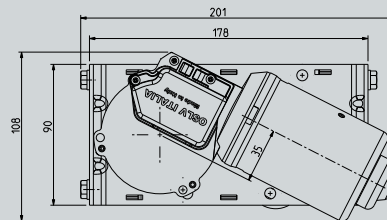
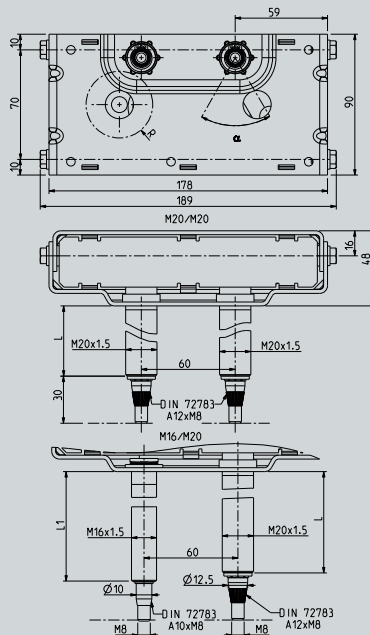
Dati tecnici / Technical Data

| PRESTAZIONI PERFORMANCE | 1 Velocità 1 Speed | | 2 Velocità 2 Speed | |
|---|--|-----|-----------------------|-----|
| | Tensione nominale (V) Nominal tension (V) | 12 | 24 | 12 |
| Tensione di prova (V) Trial tension | 13.5 | 27 | 13.5 | 27 |
| Corrente nominale (A) Nominal current | 2.5 | 1.5 | 2.5 | 1.5 |
| Coppia nominale (Nm) Nominal torque | 4 | 4 | 4 | 4 |
| Coppia di spunto (Nm) Starting pair | 40 | 40 | 40 | 40 |
| Prima velocità (giri/min) First speed (rpm) | 35 | | 35 | |
| Seconda velocità (giri/min) Second speed (rpm) | | | 50 | |

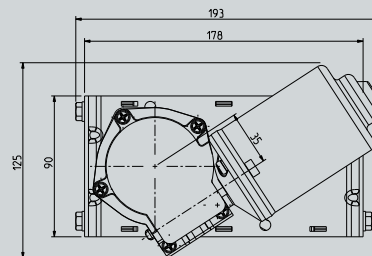
COMPACT SMALL (closed)

Cinematismo tergicristallo compatto per braccio pantografo e spazzola fino a 700 mm (chiuso)

Compact wiper mechanisms for pantograph arm and blades up to 700 mm (closed)



COMPLETE WIPER MECHANISM (LINKAGE + DC GEARMOTOR Ø62-35)



COMPLETE WIPER MECHANISM (LINKAGE + DC GEARMOTOR Ø62-35)

| α | 45° | 55° | 60° | 65° | 70° | 75° | 80° | 90° | 105° |
|--------------------|-----|-----|-----|------|------|-----|-----|-----|------|
| L (mm) | 23 | 30 | 38 | 43,5 | 46,5 | 73 | 78 | 102 | 113 |
| L1 (mm) = L + 5 mm | | | | | | | | | |

PARK POSITION



External View

COMPACT SMALL (open)

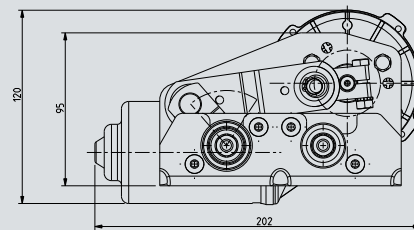
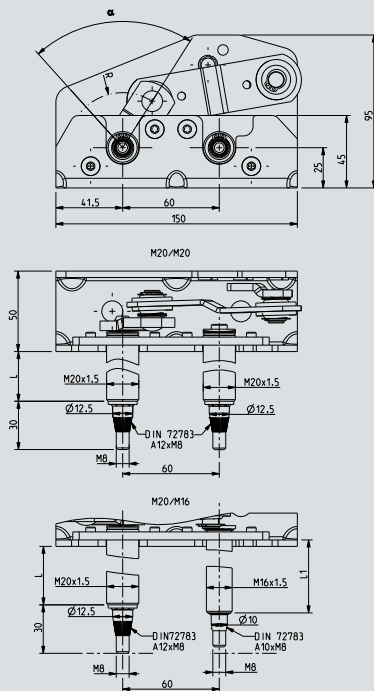


Dati tecnici / Technical Data

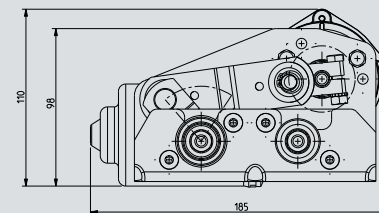
| PRESTAZIONI PERFORMANCE | 1 Velocità 1 Speed | | 2 Velocità 2 Speed | |
|---|--|----|-----------------------|----|
| | Tensione nominale (V) Nominal tension (V) | 12 | 24 | 12 |
| Tensione di prova (V) Trial tension | 13.5 | 27 | 13.5 | 27 |
| Corrente nominale (A) Nominal current | 2.5 | 2 | 2.5 | 2 |
| Coppia nominale (Nm) Nominal torque | 3 | 3 | 3 | 3 |
| Coppia di spunto (Nm) Starting pair | 30 | 30 | 45 | 45 |
| Prima velocità (giri/min) First speed (rpm) | 30 | | 30 | |
| Seconda velocità (giri/min) Second speed (rpm) | | | 45 | |

Cinematismo tergicristallo compatto per braccio pantografo e spazzola fino a 700 mm (aperto)

Compact wiper mechanisms for pantograph arm and blades up to 700 mm (open)



COMPLETE WIPER MECHANISM (LINKAGE + DC GEARMOTOR 062-43)



COMPLETE WIPER MECHANISM (LINKAGE + DC GEARMOTOR 062-35)

| α | 45° | 57° | 60° | 70° | 72° | 74° | 75° | 80° | 82° | 85° | 90° | 105° |
|----------|-----|-----|-----|------|-----|-----|-----|------|-----|-----|-----|------|
| L (mm) | 30 | 54 | 55 | 55,5 | 58 | 60 | 61 | 80,5 | 102 | - | - | - |

L1 (mm) = L + 5 mm

PARK POSITION



External View

COMPACT SMALL (open)

COMPACT MEDIUM



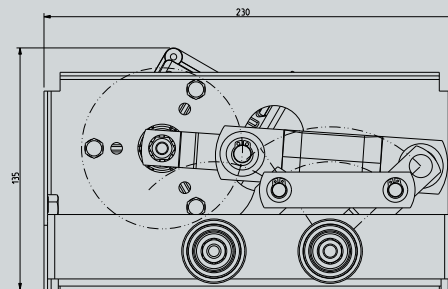
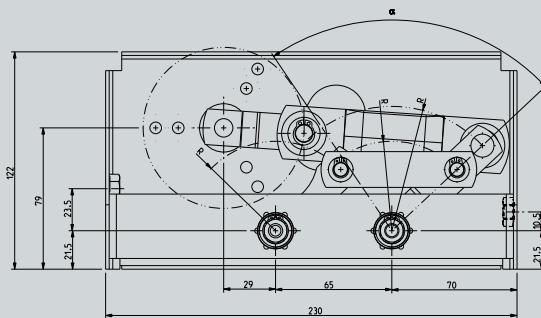
Dati tecnici / Technical Data

| PRESTAZIONI PERFORMANCE | 1 Velocità 1 Speed | | 2 Velocità 2 Speed | |
|---|--|-----|-----------------------|-----|
| | Tensione nominale (V) Nominal tension (V) | 12 | 24 | 12 |
| Tensione di prova (V) Trial tension | 13.5 | 27 | 13.5 | 27 |
| Corrente nominale (A) Nominal current | 2.5 | 1.5 | 2.5 | 1.5 |
| Coppia nominale (Nm) Nominal torque | 4 | 4 | 4 | 4 |
| Coppia di spunto (Nm) Starting pair | 40 | 40 | 40 | 40 |
| Prima velocità (giri/min) First speed (rpm) | 35 | | 35 | |
| Seconda velocità (giri/min) Second speed (rpm) | | | 50 | |

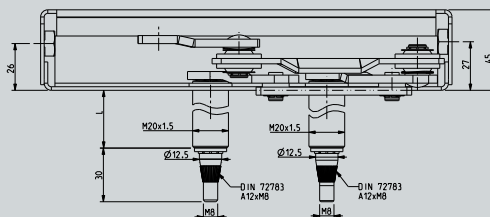
COMPACT MEDIUM

Cinematismo tergicristallo compatto per braccio pantografo e spazzola fino a 800 mm

Compact wiper mechanisms for pantograph arm and blade up to 800 mm



COMPLETE WIPER MECHANISM (LINKAGE + DC GEARMOTOR Ø76)



| | | | | | | | |
|----------|-----|-----|-----|-----|-----|-----|-----|
| α | 50° | 55° | 60° | 65° | 80° | 85° | 90° |
| L (mm) | 40 | 50 | 55 | 70 | 95 | 105 | - |

PARK POSITION



External View

COMPACT LARGE

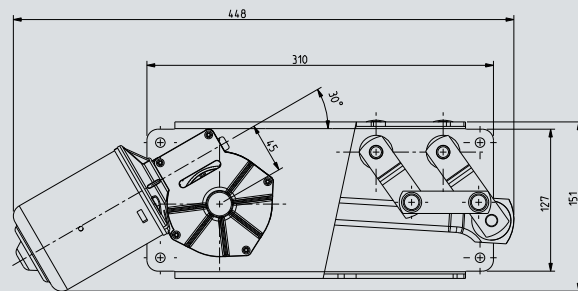
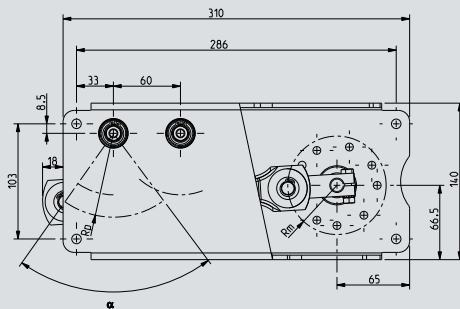


Dati tecnici / Technical Data

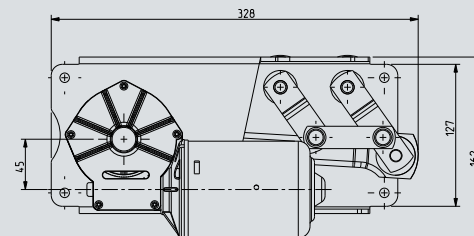
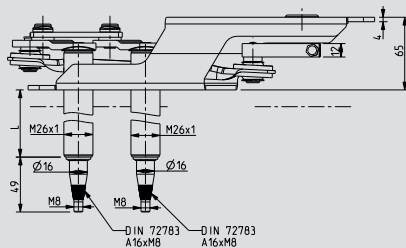
| PRESTAZIONI PERFORMANCE | 1 Velocità 1 Speed | | 2 Velocità 2 Speed | |
|---|--|----|-----------------------|----|
| | Tensione nominale (V) Nominal tension (V) | 12 | 24 | 12 |
| Tensione di prova (V) Trial tension | 13.5 | 27 | 13.5 | 27 |
| Corrente nominale (A) Nominal current | 3 | 2 | 3 | 2 |
| Coppia nominale (Nm) Nominal torque | 7 | 7 | 7 | 7 |
| Coppia di spunto (Nm) Starting pair | 55 | 65 | 55 | 65 |
| Prima velocità (giri/min) First speed (rpm) | 30 | | 30 | |
| Seconda velocità (giri/min) Second speed (rpm) | | | 40 | |

Cinematismo tergicristallo compatto per braccio pantografo e spazzola oltre 800 mm

Compact wiper mechanisms for pantograph arm and blade up to 800 mm



COMPLETE WIPER MECHANISM (LINKAGE + DC GEARMOTOR Ø90)



COMPLETE WIPER MECHANISM (LINKAGE + DC GEARMOTOR Ø90)

| L (mm) | 82 | 102 |
|----------|-----|-----|
| α | 72° | 72° |

PARK POSITION



External View

COMPACT LARGE

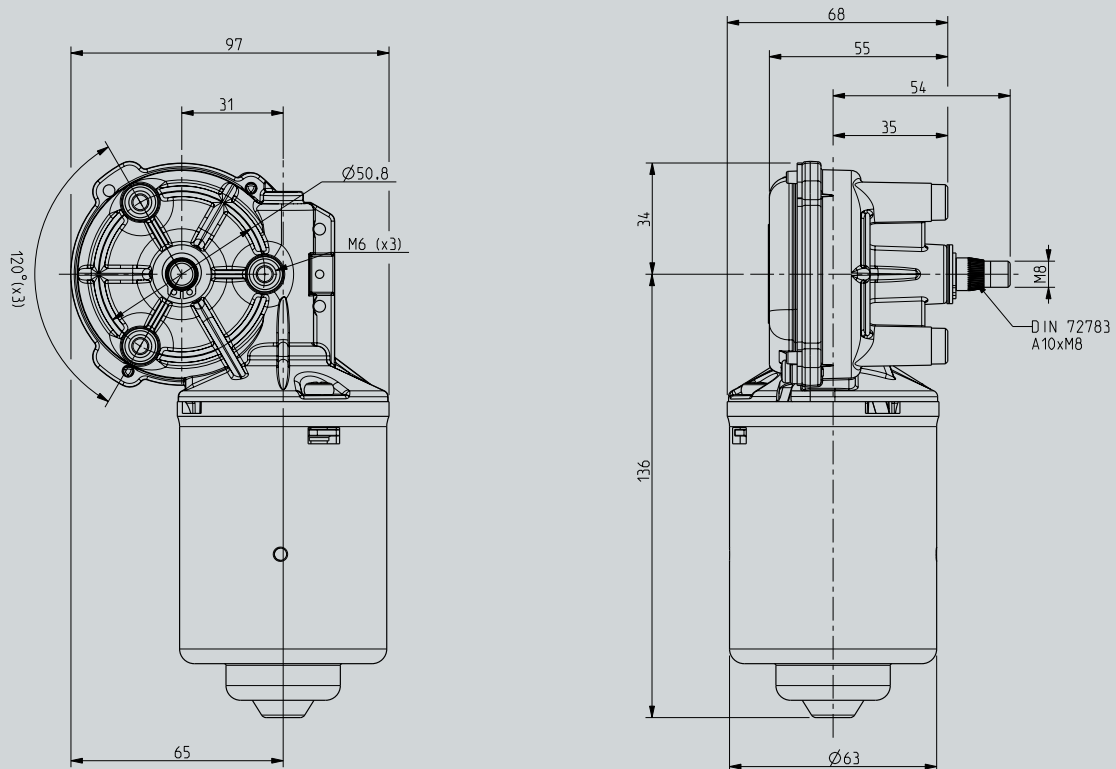
MRT62-31

Sinistro / Left


Dati tecnici / Technical Data

| PRESTAZIONI PERFORMANCE | 1 Velocità 1 Speed | | 2 Velocità 2 Speed | |
|--|---|-----|-----------------------|-----|
| | Tensione nominale (V) Nominal tension (V) | 12 | 24 | 12 |
| Tensione di prova (V) Trial tension | 13.5 | 27 | 13.5 | 27 |
| Corrente nominale (A) Nominal current | 1.5 | 1 | 2.5 | 2 |
| Coppia nominale (Nm) Nominal torque | 2.5 | 2.5 | 2.5 | 2.5 |
| Coppia di spunto (Nm) Starting pair | 25 | 25 | 25 | 25 |
| Prima velocità (giri/min) First speed (rpm) | 35 | | 35 | |
| Seconda velocità (giri/min) Second speed (rpm) | | | 45 | |

MRT62-31



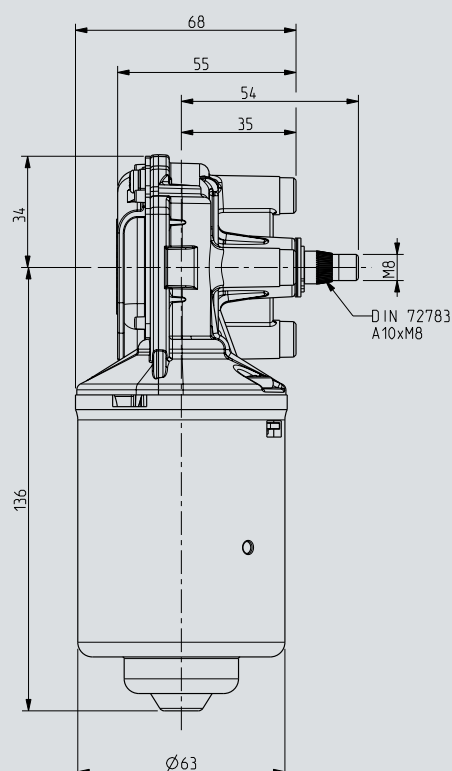
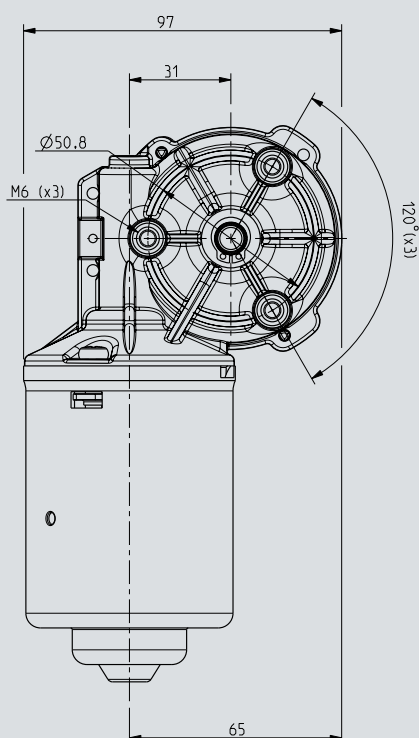
MRT62-31

Destro / Right



Dati tecnici / Technical Data

| PRESTAZIONI PERFORMANCE | 1 Velocità 1 Speed | | 2 Velocità 2 Speed | |
|---|--|-----|-----------------------|-----|
| | Tensione nominale (V) Nominal tension (V) | 12 | 24 | 12 |
| Tensione di prova (V) Trial tension | 13.5 | 27 | 13.5 | 27 |
| Corrente nominale (A) Nominal current | 1.5 | 1 | 2.5 | 2 |
| Coppia nominale (Nm) Nominal torque | 2.5 | 2.5 | 2.5 | 2.5 |
| Coppia di spunto (Nm) Starting pair | 25 | 25 | 25 | 25 |
| Prima velocità (giri/min) First speed (rpm) | 35 | | 35 | |
| Seconda velocità (giri/min) Second speed (rpm) | | | 45 | |



MRT62-31

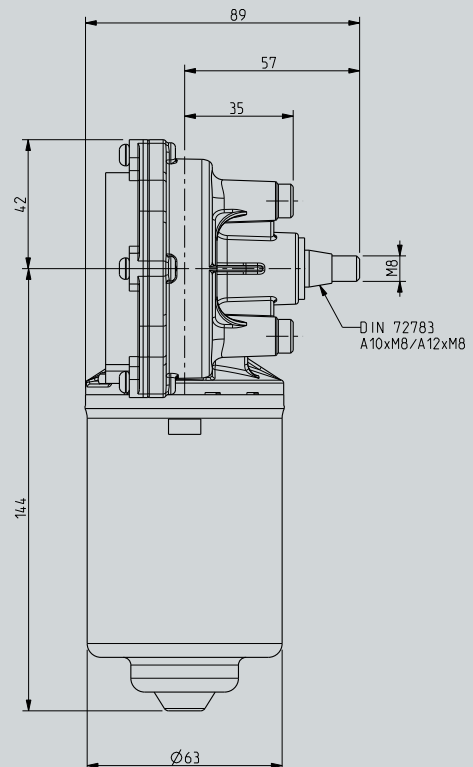
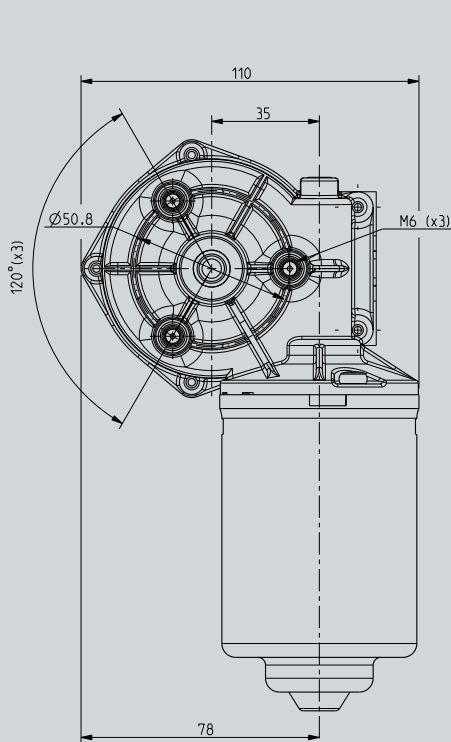
MRT62-35

Sinistro / Left


Dati tecnici / Technical Data

| PRESTAZIONI PERFORMANCE | 1 Velocità 1 Speed | | 2 Velocità 2 Speed | |
|---|--|----|-----------------------|----|
| | Tensione nominale (V) Nominal tension (V) | 12 | 24 | 12 |
| Tensione di prova (V) Trial tension | 13.5 | 27 | 13.5 | 27 |
| Corrente nominale (A) Nominal current | 2.5 | 2 | 2.5 | 2 |
| Coppia nominale (Nm) Nominal torque | 3 | 3 | 3 | 3 |
| Coppia di spunto (Nm) Starting torque | 30 | 30 | 45 | 45 |
| Prima velocità (giri/min) First speed (rpm) | 30 | | 30 | |
| Seconda velocità (giri/min) Second speed (rpm) | | | 45 | |

MRT62-35



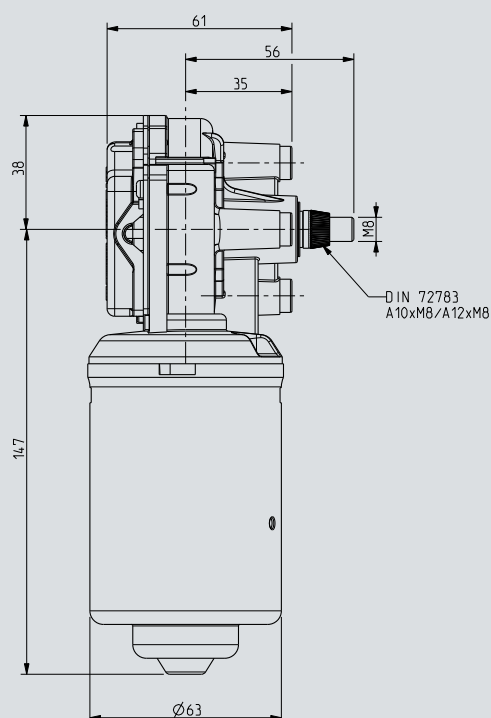
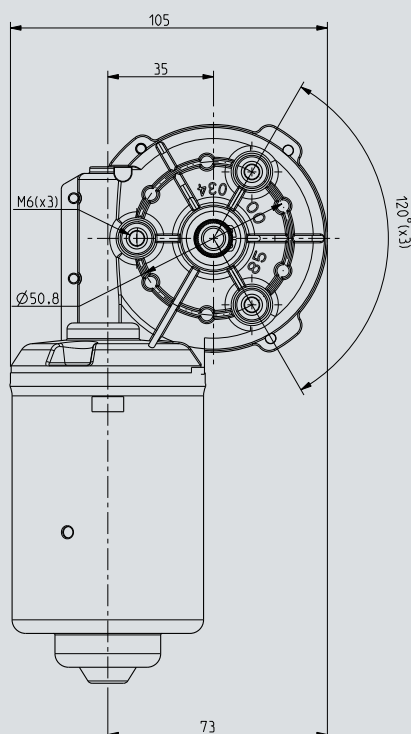
MRT62-35

Destro / Right



Dati tecnici / Technical Data

| PRESTAZIONI PERFORMANCE | 1 Velocità 1 Speed | | 2 Velocità 2 Speed | |
|--|---|----|-----------------------|----|
| | Tensione nominale (V) Nominal tension (V) | 12 | 24 | 12 |
| Tensione di prova (V) Trial tension | 13.5 | 27 | 13.5 | 27 |
| Corrente nominale (A) Nominal current | 2.5 | 2 | 2.5 | 2 |
| Coppia nominale (Nm) Nominal torque | 3 | 3 | 3 | 3 |
| Coppia di spunto (Nm) Starting torque | 30 | 30 | 45 | 45 |
| Prima velocità (giri/min) First speed (rpm) | 30 | | 30 | |
| Seconda velocità (giri/min) Second speed (rpm) | | | 45 | |



MRT62-35

MRT62-43 (Ø72)

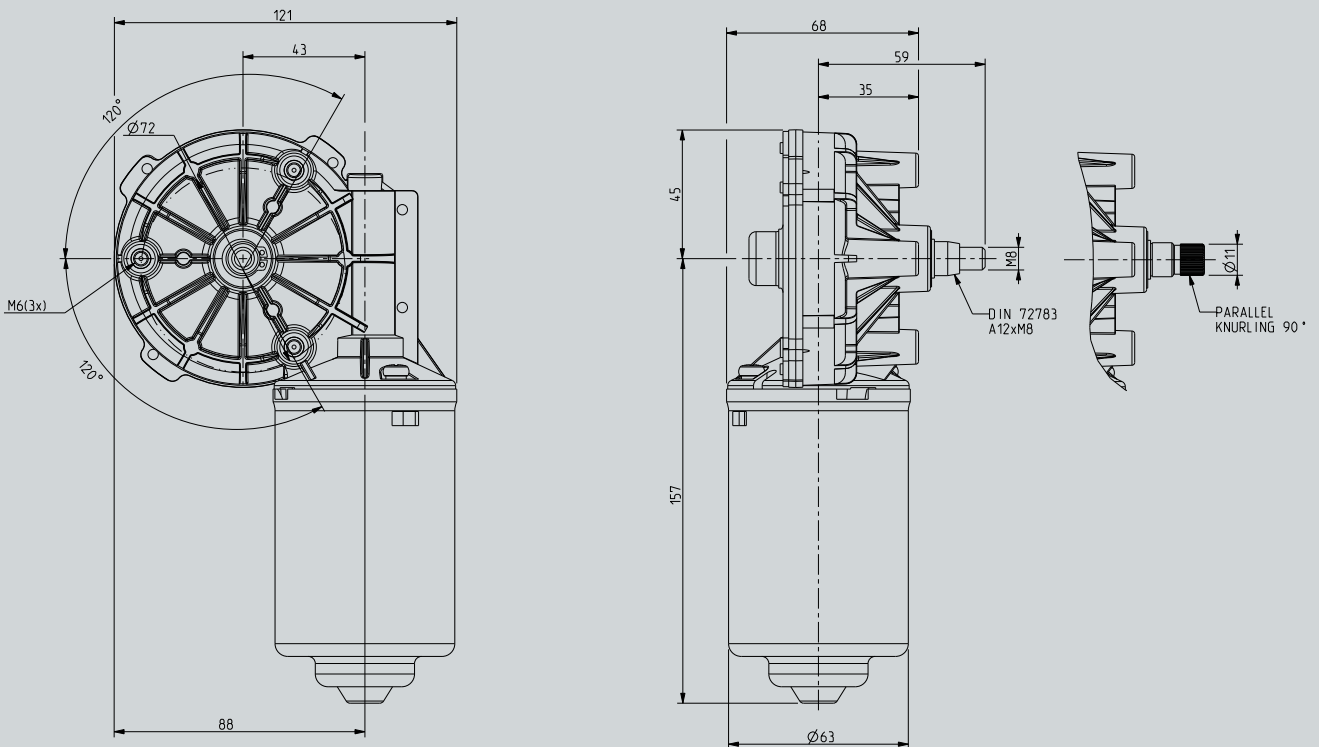
Sinistro / Left



Dati tecnici / Technical Data

| PRESTAZIONI PERFORMANCE | 1 Velocità 1 Speed | | 2 Velocità 2 Speed | |
|---|--|-----|-----------------------|-----|
| | Tensione nominale (V) Nominal tension (V) | 12 | 24 | 12 |
| Tensione di prova (V) Trial tension | 13.5 | 27 | 13.5 | 27 |
| Corrente nominale (A) Nominal current | 2 | 1.5 | 2 | 1.5 |
| Coppia nominale (Nm) Nominal torque | 4 | 4 | 4 | 4 |
| Coppia di spunto (Nm) Starting pair | 40 | 40 | 45 | 45 |
| Prima velocità (giri/min) First speed (rpm) | 35 | | 30 | |
| Seconda velocità (giri/min) Second speed (rpm) | | | 45 | |

MRT62-43 (Ø72)



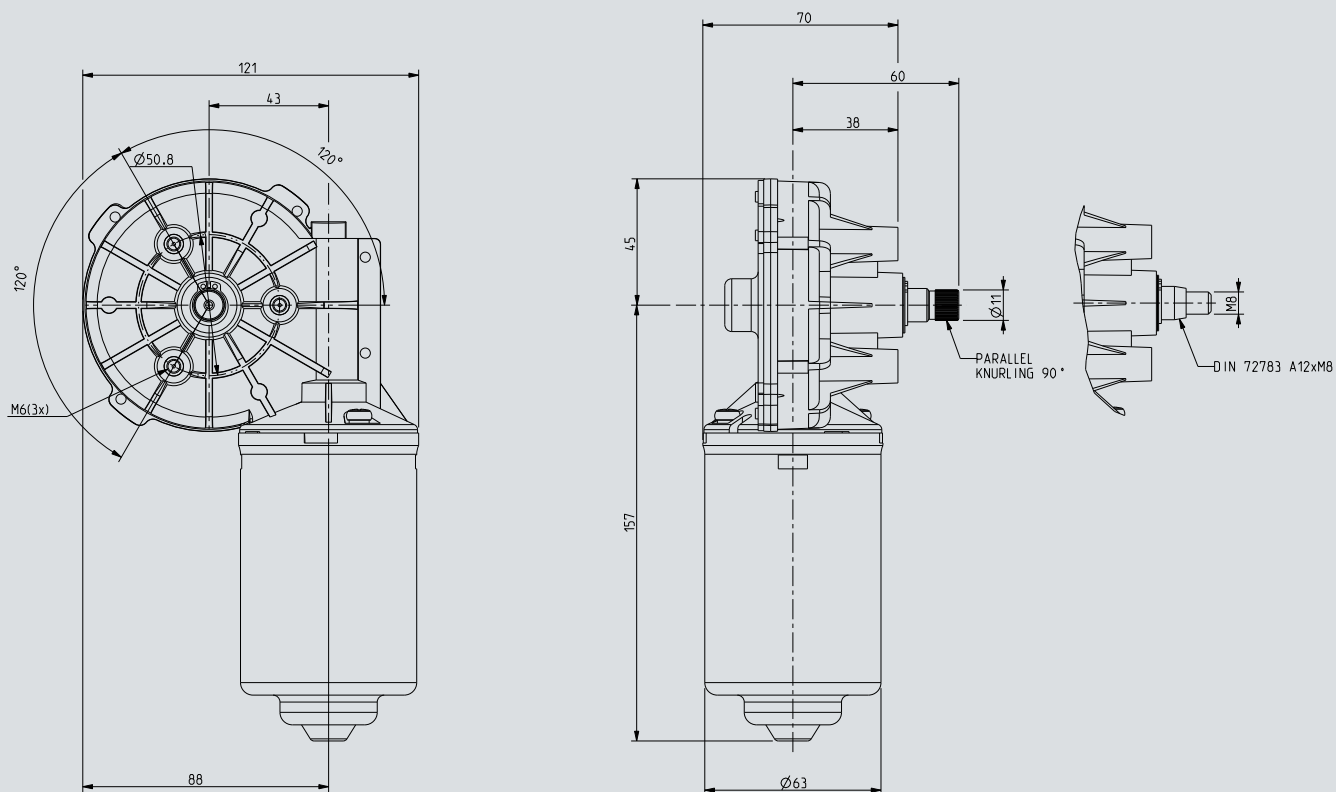
MRT62-43 (Ø50,8)

Sinistro / Left



Dati tecnici / Technical Data

| PRESTAZIONI PERFORMANCE | 1 Velocità 1 Speed | | 2 Velocità 2 Speed | |
|--|---|-----|-----------------------|-----|
| | Tensione nominale (V) Nominal tension (V) | 12 | 24 | 12 |
| Tensione di prova (V) Trial tension | 13.5 | 27 | 13.5 | 27 |
| Corrente nominale (A) Nominal current | 2 | 1.5 | 2 | 1.5 |
| Coppia nominale (Nm) Nominal torque | 4 | 4 | 4 | 4 |
| Coppia di spunto (Nm) Starting pair | 40 | 40 | 45 | 45 |
| Prima velocità (giri/min) First speed (rpm) | 35 | | 30 | |
| Seconda velocità (giri/min) Second speed (rpm) | | | 45 | |



MRT62-43 (Ø50,8)

MRT76

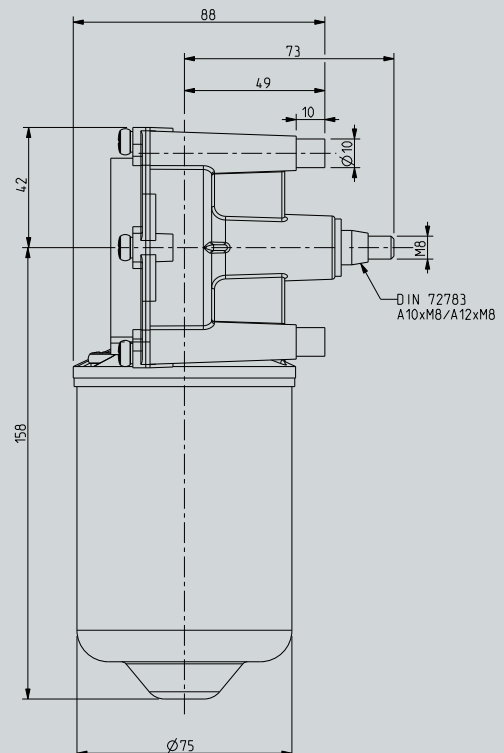
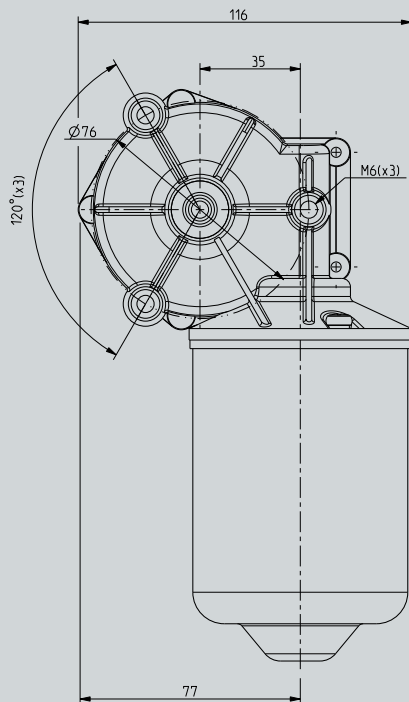
Sinistro / Left



Dati tecnici / Technical Data

| PRESTAZIONI PERFORMANCE | 1 Velocità 1 Speed | | 2 Velocità 2 Speed | |
|---|--|-----|-----------------------|-----|
| | Tensione nominale (V) Nominal tension (V) | 12 | 24 | 12 |
| Tensione di prova (V) Trial tension | 13.5 | 27 | 13.5 | 27 |
| Corrente nominale (A) Nominal current | 2.5 | 1.5 | 2.5 | 1.5 |
| Coppia nominale (Nm) Nominal torque | 4 | 4 | 4 | 4 |
| Coppia di spunto (Nm) Starting pair | 40 | 40 | 40 | 40 |
| Prima velocità (giri/min) First speed (rpm) | 35 | | 35 | |
| Seconda velocità (giri/min) Second speed (rpm) | | | 50 | |

MRT76



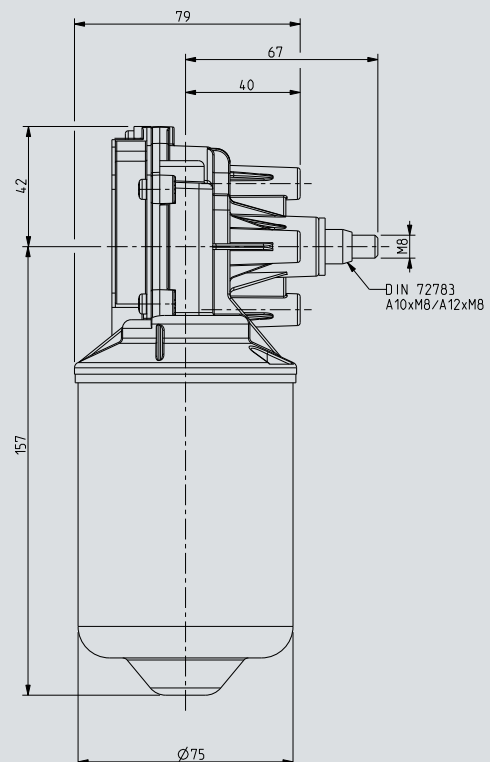
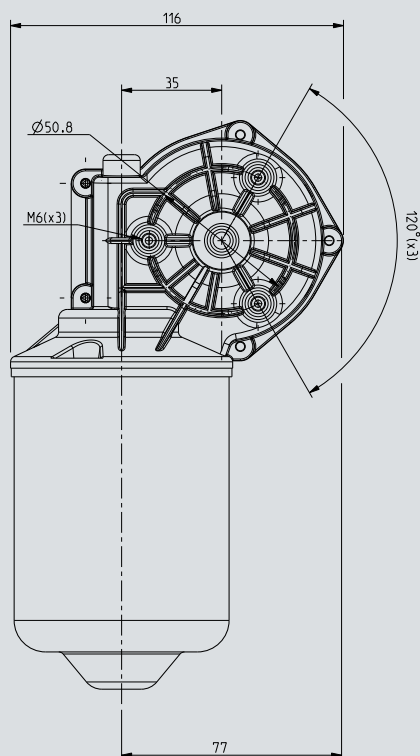
MRT76

Destro / Right



Dati tecnici / Technical Data

| PRESTAZIONI PERFORMANCE | 1 Velocità 1 Speed | | 2 Velocità 2 Speed | |
|--|---|-----|-----------------------|-----|
| | Tensione nominale (V) Nominal tension (V) | 12 | 24 | 12 |
| Tensione di prova (V) Trial tension | 13.5 | 27 | 13.5 | 27 |
| Corrente nominale (A) Nominal current | 2.5 | 1.5 | 2.5 | 1.5 |
| Coppia nominale (Nm) Nominal torque | 4 | 4 | 4 | 4 |
| Coppia di spunto (Nm) Starting pair | 40 | 40 | 40 | 40 |
| Prima velocità (giri/min) First speed (rpm) | 35 | | 35 | |
| Seconda velocità (giri/min) Second speed (rpm) | | | 50 | |



MRT90-45

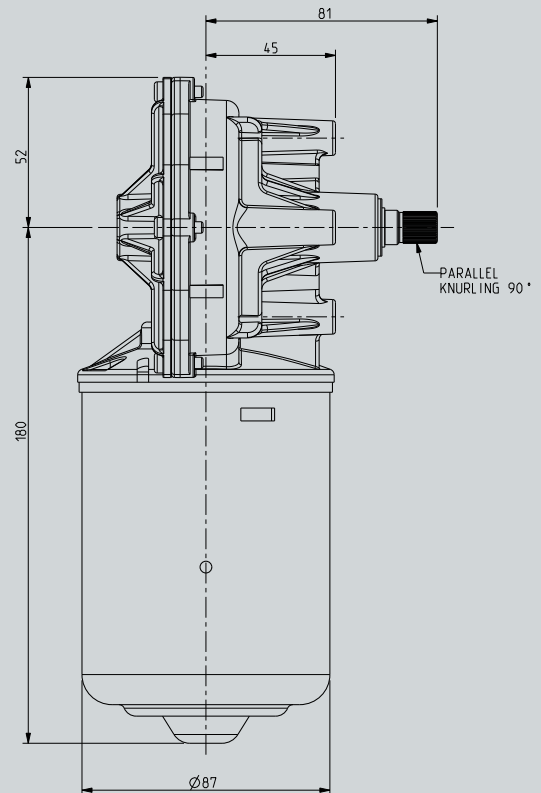
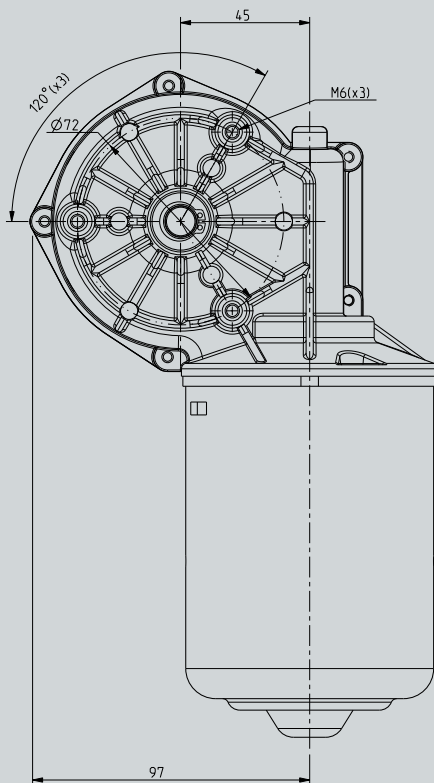
Sinistro / Left



Dati tecnici / Technical Data

| PRESTAZIONI PERFORMANCE | 1 Velocità 1 Speed | | 2 Velocità 2 Speed | |
|---|--|----|-----------------------|----|
| | Tensione nominale (V) Nominal tension (V) | 12 | 24 | 12 |
| Tensione di prova (V) Trial tension | 13.5 | 27 | 13.5 | 27 |
| Corrente nominale (A) Nominal current | 3 | 2 | 3 | 2 |
| Coppia nominale (Nm) Nominal torque | 7 | 7 | 7 | 7 |
| Coppia di spunto (Nm) Starting pair | 55 | 65 | 55 | 65 |
| Prima velocità (giri/min) First speed (rpm) | 30 | | 30 | |
| Seconda velocità (giri/min) Second speed (rpm) | | | 40 | |

MRT90-45



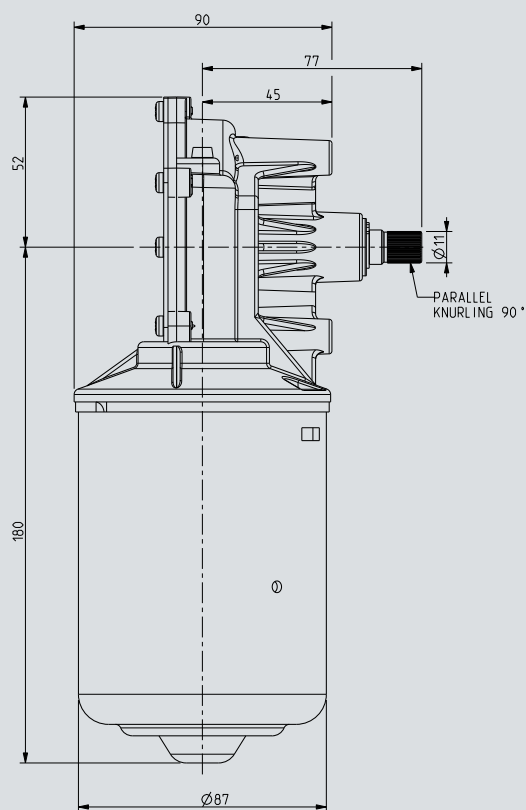
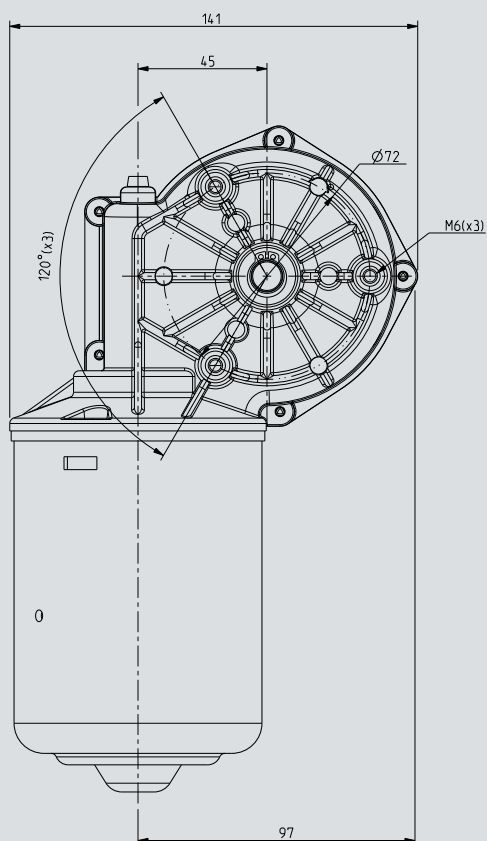
MRT90-45

Destro / Right



Dati tecnici / Technical Data

| PRESTAZIONI PERFORMANCE | 1 Velocità 1 Speed | | 2 Velocità 2 Speed | |
|---|--|----|-----------------------|----|
| | Tensione nominale (V) Nominal tension (V) | 12 | 24 | 12 |
| Tensione di prova (V) Trial tension | 13.5 | 27 | 13.5 | 27 |
| Corrente nominale (A) Nominal current | 3 | 2 | 3 | 2 |
| Coppia nominale (Nm) Nominal torque | 7 | 7 | 7 | 7 |
| Coppia di spunto (Nm) Starting pair | 55 | 65 | 55 | 65 |
| Prima velocità (giri/min) First speed (rpm) | 30 | | 30 | |
| Seconda velocità (giri/min) Second speed (rpm) | | | 40 | |



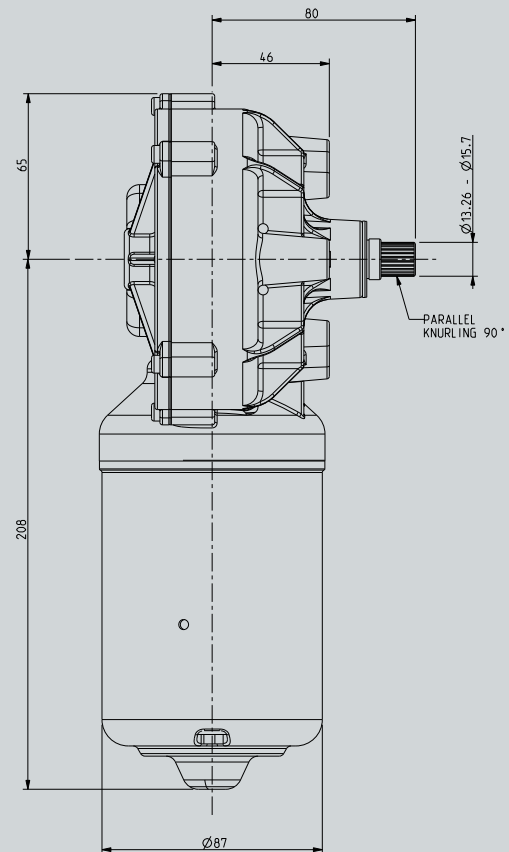
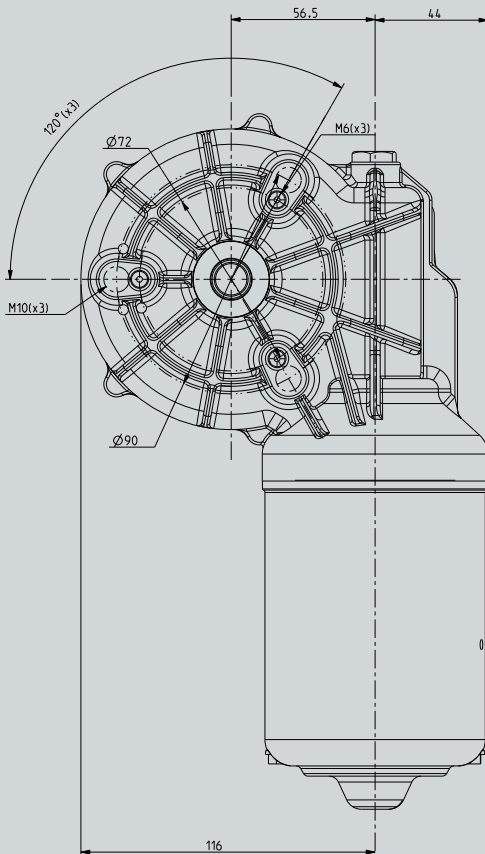
MRT90-45

MRT90-56

Sinistro / Left


Dati tecnici / Technical Data

| PRESTAZIONI PERFORMANCE | 1 Velocità 1 Speed | | 2 Velocità 2 Speed | |
|---|--|-----|-----------------------|----|
| | Tensione nominale (V) Nominal tension (V) | 12 | 24 | 12 |
| Tensione di prova (V) Trial tension | 13.5 | 27 | 13.5 | 27 |
| Corrente nominale (A) Nominal current | 8 | 4 | 12 | 6 |
| Coppia nominale (Nm) Nominal torque | 7 | 10 | 6 | 7 |
| Coppia di spunto (Nm) Starting pair | 70 | 100 | 60 | 80 |
| Prima velocità (giri/min) First speed (rpm) | 27 | | 27 | |
| Seconda velocità (giri/min) Second speed (rpm) | | | 35 | |



MRT90-56

MRT62-TP1

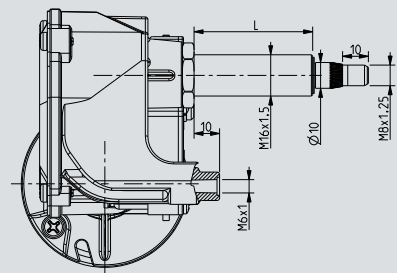
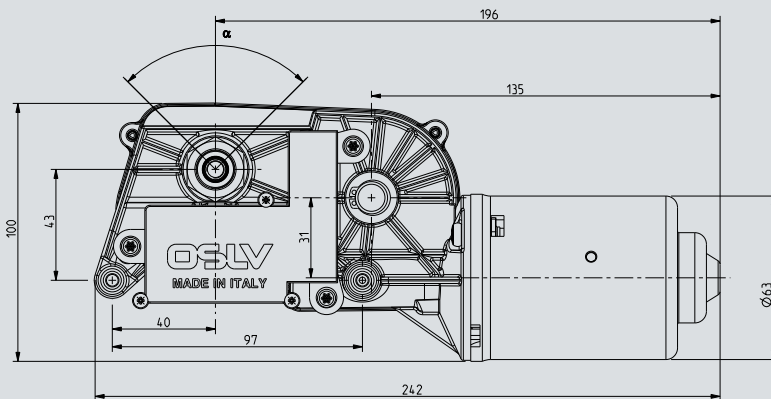


Dati tecnici / Technical Data

| PRESTAZIONI PERFORMANCE | 1 Velocità 1 Speed | | 2 Velocità 2 Speed | |
|---|--|-----|-----------------------|-----|
| | Tensione nominale (V) Nominal tension (V) | 12 | 24 | 12 |
| Tensione di prova (V) Trial tension | 13.5 | 27 | 13.5 | 27 |
| Corrente nominale (A) Nominal current | 2.5 | 1.5 | 2.5 | 1.5 |
| Coppia nominale (Nm) Nominal torque | 4 | 4 | 4 | 4 |
| Coppia di spunto (Nm) Starting pair | 10 | 10 | 10 | 10 |
| Prima velocità (giri/min) First speed (rpm) | 35 | | 35 | |
| Seconda velocità (giri/min) Second speed (rpm) | | | 50 | |

Motoriduttore cinematiso interno (tipo uno)

Wiper motor with internal mechanism



Dimensioni / Dimensions

| L (mm) | 20 | 30 | 35 | 40 | 50 | 65 |
|--------|----|----|----|----|----|----|
|--------|----|----|----|----|----|----|

| H (mm) | 29 | 35 | 50 | 55.5 | 60 | 70 |
|--------|----|----|----|------|----|----|
|--------|----|----|----|------|----|----|

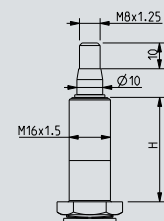
| α | 80° | 90° | 105° | 136° |
|----------|-----|-----|------|------|
|----------|-----|-----|------|------|

PARK POSITION



External View

LOOSE PIVOT FOR PANTOGRAPH SYSTEM



MRT50

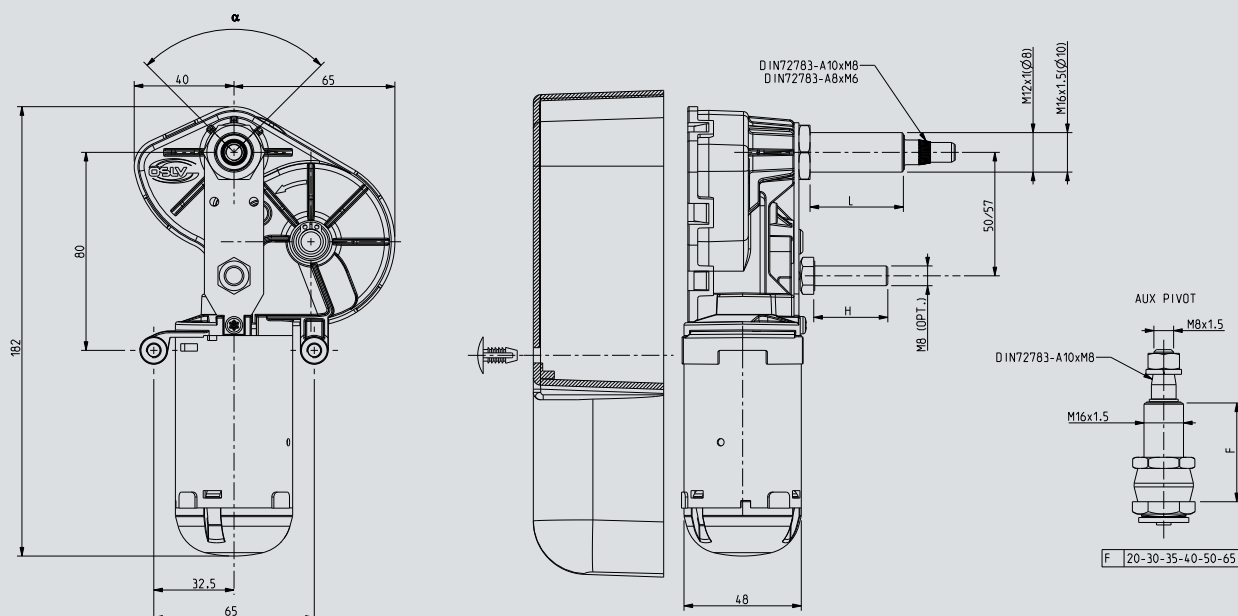


Dati tecnici / Technical Data

| PRESTAZIONI PERFORMANCE | 1 Velocità 1 Speed | |
|---|--|----|
| | Tensione nominale (V) Nominal tension (V) | 12 |
| Tensione di prova (V) Trial tension | 13.5 | 27 |
| Corrente nominale (A) Nominal current | | |
| Coppia nominale (Nm) Nominal torque | 1 | 1 |
| Coppia di spunto (Nm) Starting pair | 10 | 10 |
| Prima velocità (giri/min) First speed (rpm) | 40 | 40 |
| Seconda velocità (giri/min) Second speed (rpm) | - | |

Motoriduttore cinematismo interno

Wiper motor with internal mechanism for arm and blade max 500 mm



Dimensioni / Dimensions

| | | | | |
|--------|----|----|----|----|
| L (mm) | 25 | 35 | 40 | 60 |
| H (mm) | 16 | 20 | 30 | 60 |

PARK POSITION



External View

| | | | | | | | | | | | |
|----------|-----|-----|-----|-----|-----|------|------|------|------|------|------|
| α | 50° | 60° | 70° | 80° | 90° | 105° | 120° | 135° | 145° | 165° | 175° |
|----------|-----|-----|-----|-----|-----|------|------|------|------|------|------|

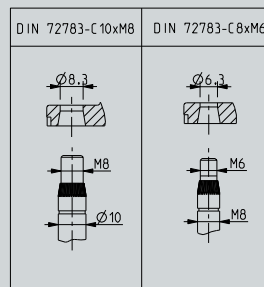
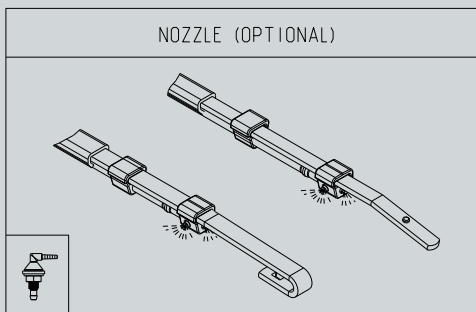
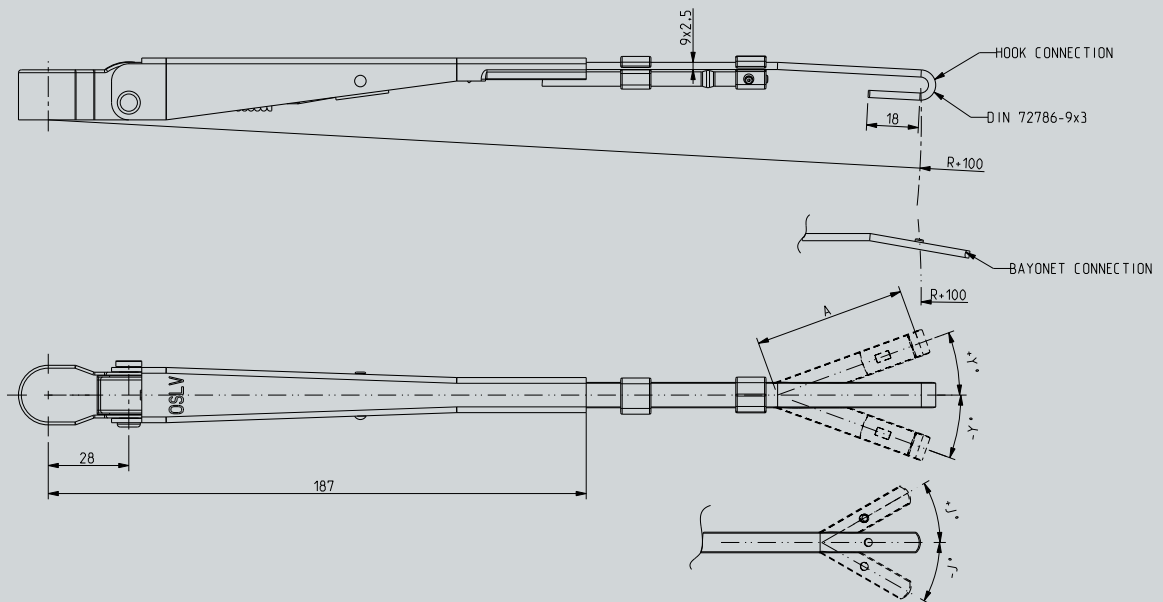
Adjustable single arm 9x2.5



Adjustable single arm 9x2.5

Dati tecnici / Technical Data

| | | | | | | | |
|---------|-------|-----|-----|-----|-----|-----|-----|
| R (mm) | 300 | 315 | 330 | 350 | 400 | 450 | 500 |
| Y (max) | ± 20° | | | | | | |

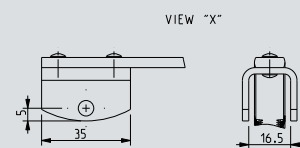
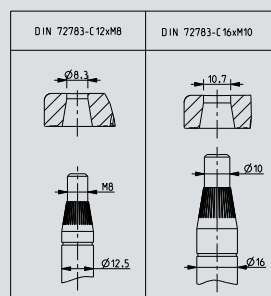
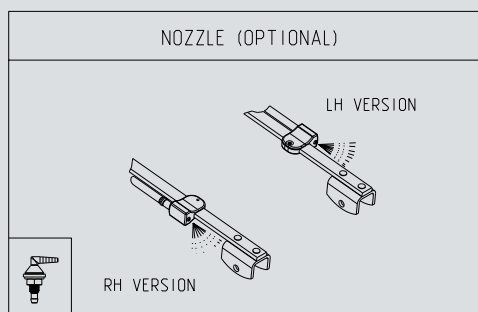
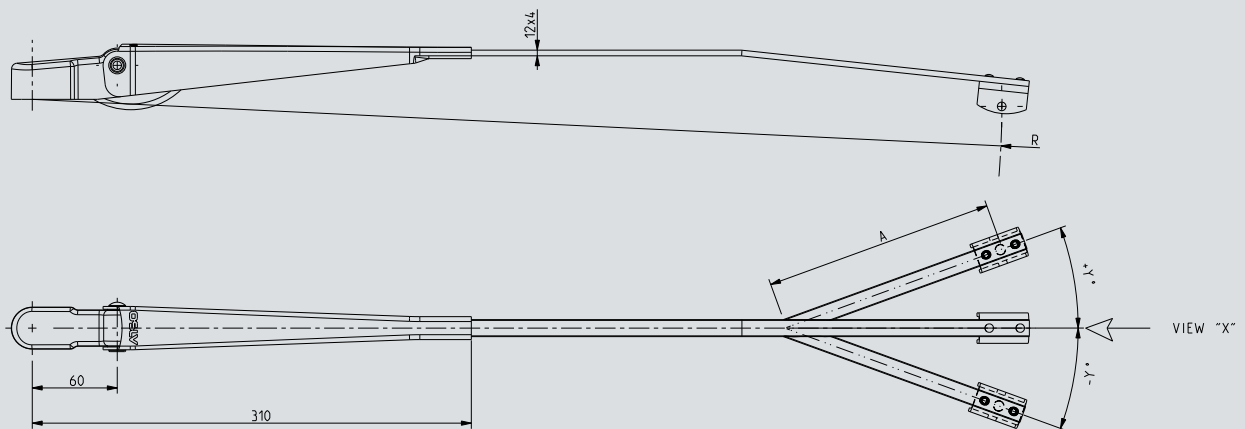


Single arm 9x3



Dati tecnici / Technical Data

| | | | | | | |
|---------|-------|-----|-----|-----|-----|-----|
| R (mm) | 275 | 300 | 350 | 400 | 450 | 500 |
| Y (max) | ± 20° | | | | | |



Single arm 9x3

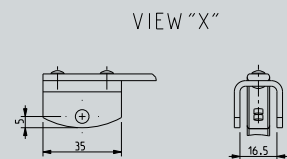
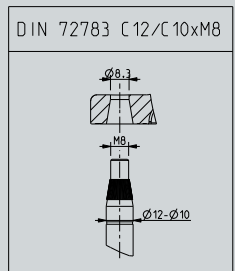
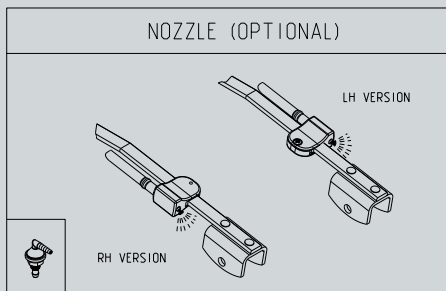
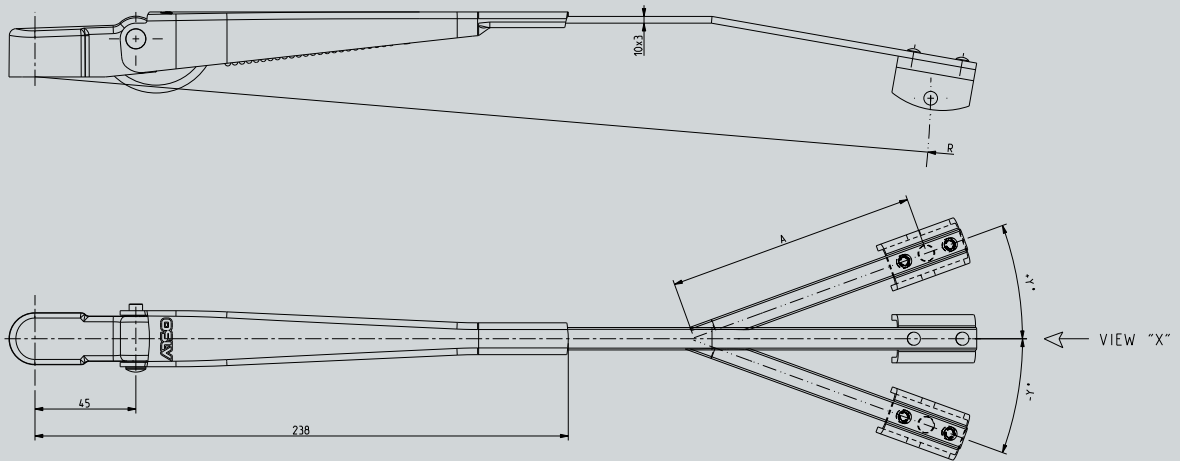
Single arm 10x3



Dati tecnici / Technical Data

| | | | | | | |
|---------|-------|-----|-----|-----|-----|-----|
| R (mm) | 450 | 500 | 550 | 600 | 650 | 700 |
| Y (max) | ± 20° | | | | | |

Single arm 10x3

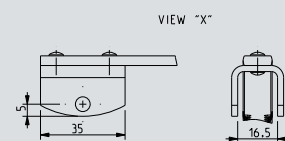
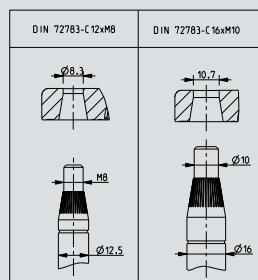
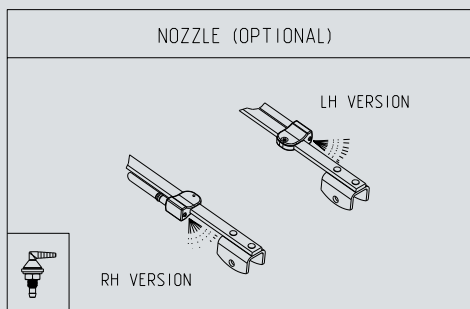
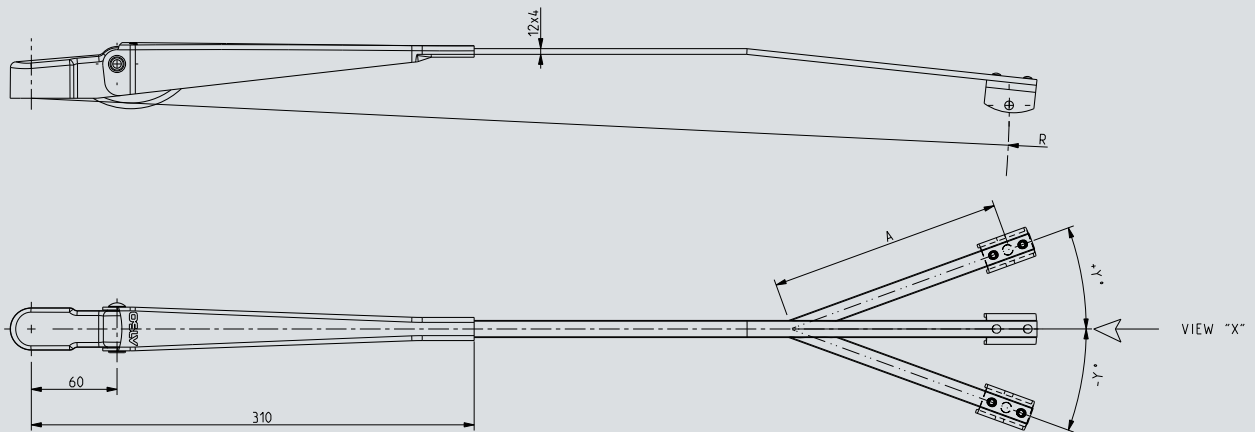


Single arm 12x4



Dati tecnici / Technical Data

| | | | | | | |
|---------|-------|-----|-----|-----|-----|-----|
| R (mm) | 275 | 300 | 350 | 400 | 450 | 500 |
| Y (max) | ± 20° | | | | | |



Single arm 12x4

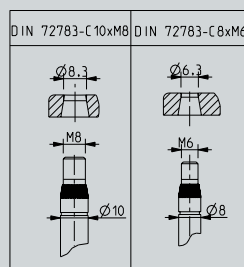
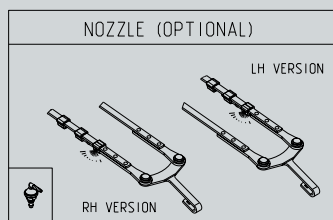
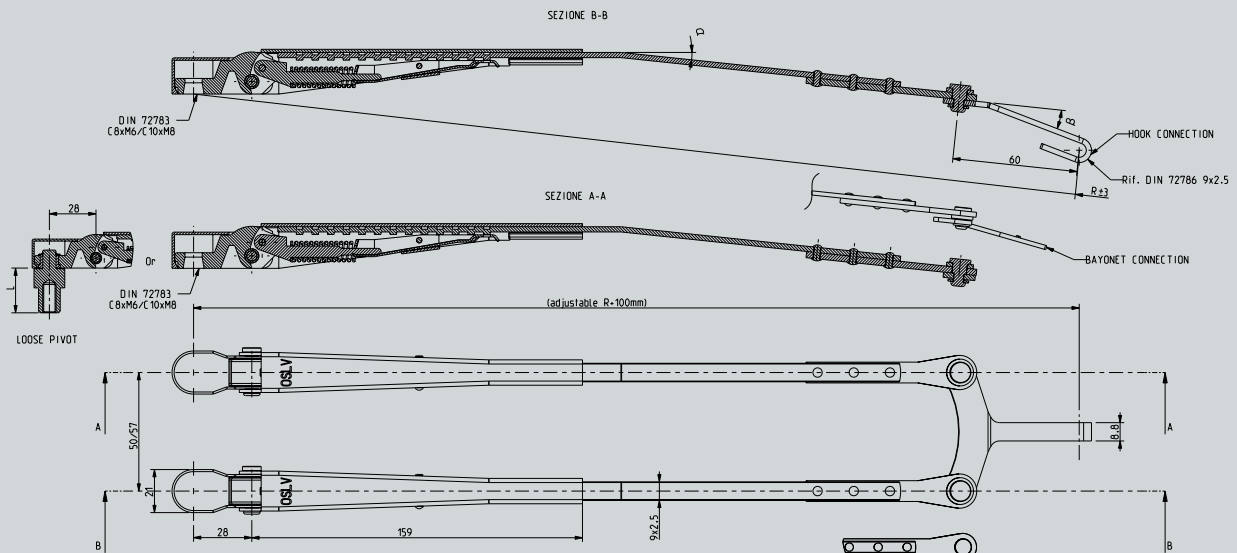
Adjustable pantograph arm 9x2.5



Adjustable pantograph arm 9x2.5

Dati tecnici / Technical Data

| | | | | | | | |
|---------------|-----|-----|------|-----|-----|-----|-----|
| R (mm) | 300 | 350 | 400 | 425 | 450 | 500 | 550 |
| L (mm) | 7 | 15 | 26,5 | 35 | 46 | | |

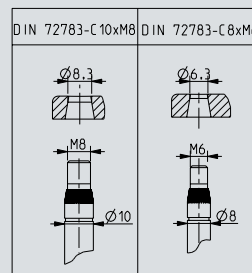
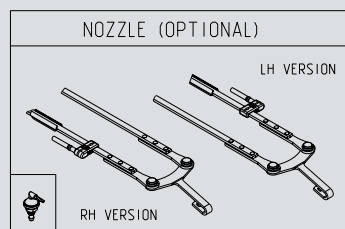
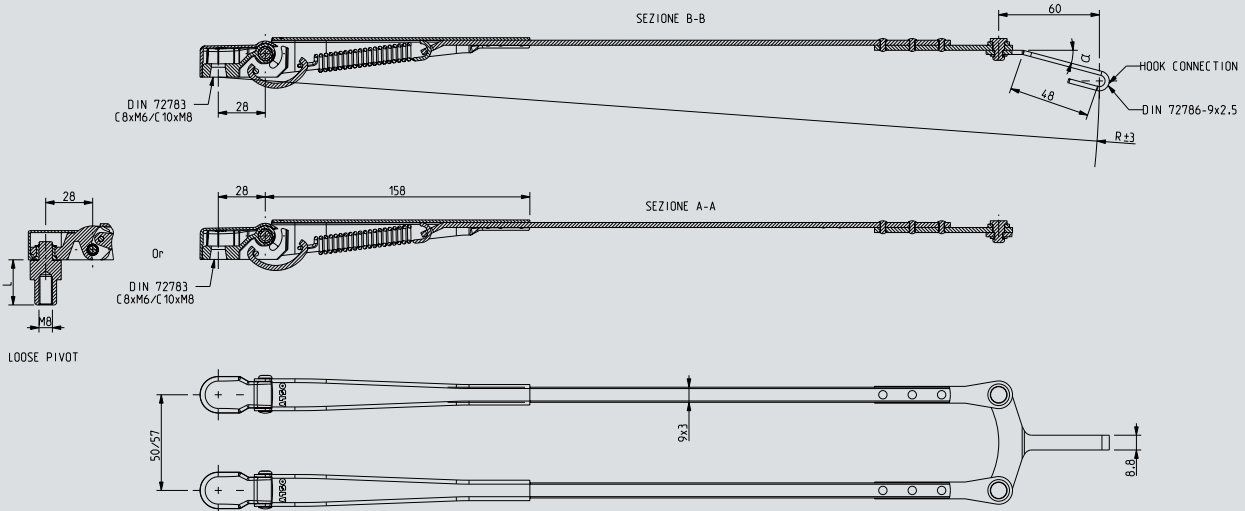


Pantograph arm 9x3



Dati tecnici / Technical Data

| | | | | | |
|--------|-----|-----|------|-----|-----|
| R (mm) | 400 | 450 | 500 | 550 | 600 |
| L (mm) | 7 | 15 | 26,5 | 35 | 46 |



Pantograph arm 9x3

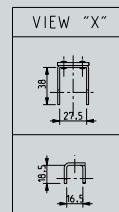
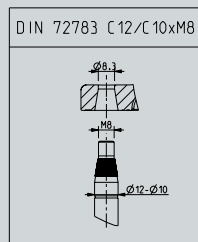
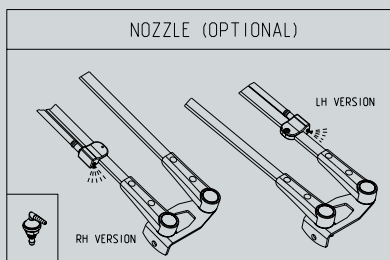
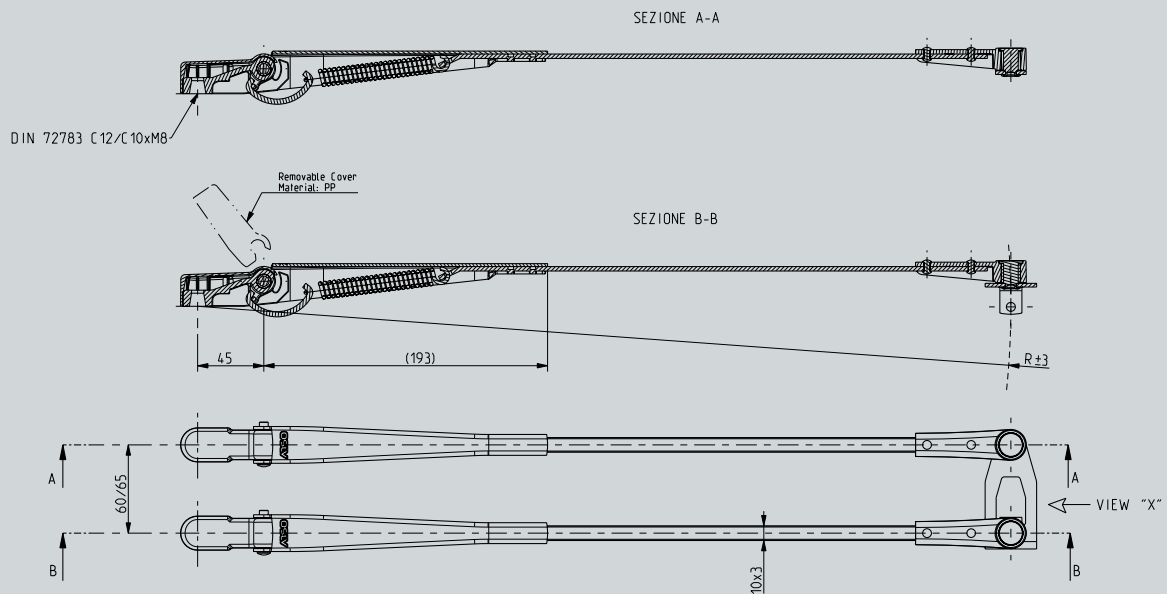
Pantograph arm 10x3



Pantograph arm 10x3

Dati tecnici / Technical Data

| | | | | | | |
|--------|-----|-----|-----|-----|-----|-----|
| R (mm) | 450 | 500 | 550 | 600 | 650 | 700 |
|--------|-----|-----|-----|-----|-----|-----|

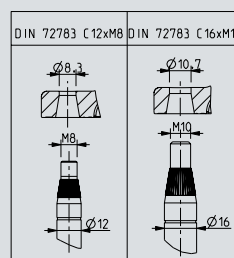
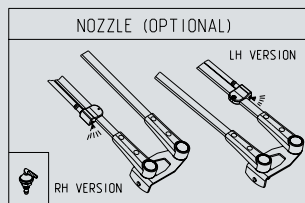
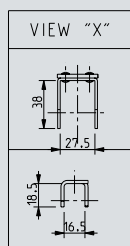
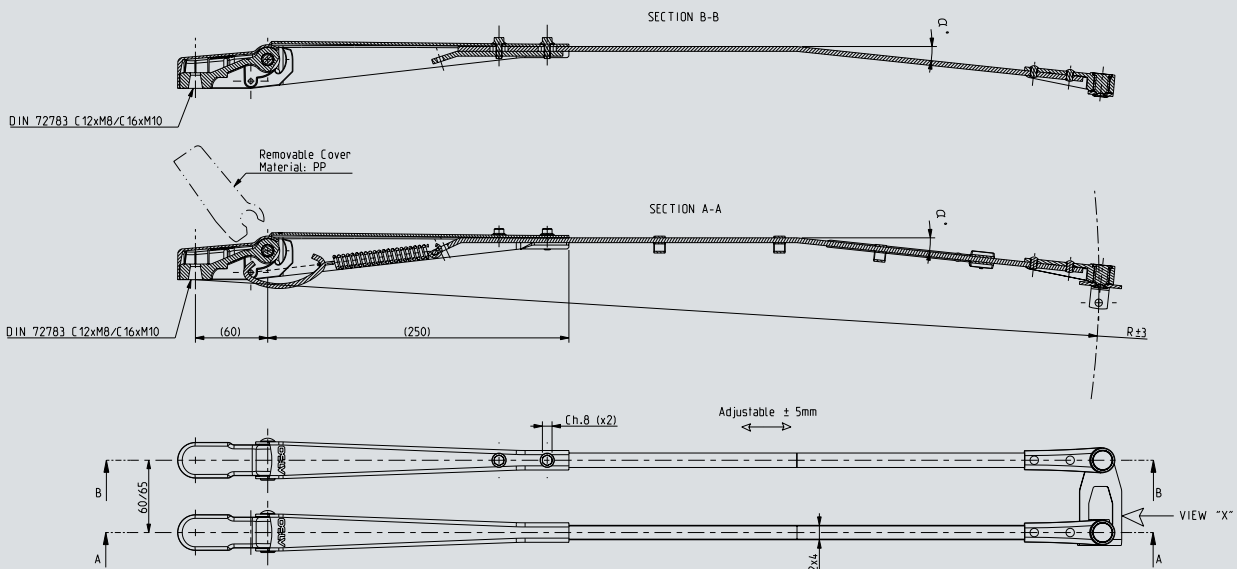


Pantograph arm 12x4



Dati tecnici / Technical Data

| R (mm) | 650 | 700 | 750 | 800 | 850 | 900 | 950 | 1000 |
|--------|-----|-----|-----|-----|-----|-----|-----|------|
|--------|-----|-----|-----|-----|-----|-----|-----|------|



Pantograph arm 12x4

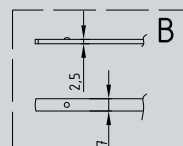
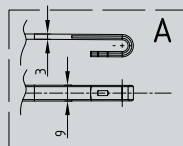
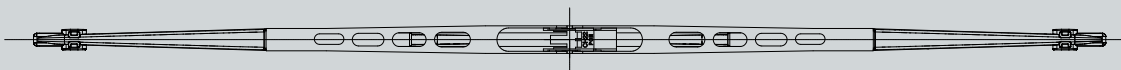
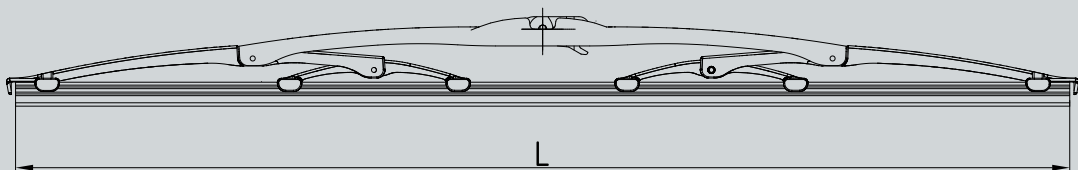
Blades

Hook connection / bayonet closure



Dati tecnici / Technical Data

| L (mm) | 290 | 300 | 330 | 350 | 380 | 400 | 450 | 480 | 500 | 550 | 600 |
|----------|-----|-----|-----|-----|-----|-----|-----|-----|-----|-----|-----|
| A | X | X | X | X | X | X | X | X | X | X | X |
| B | X | X | X | X | X | X | X | X | X | X | X |



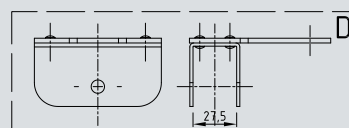
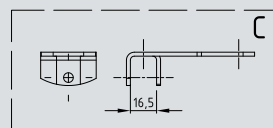
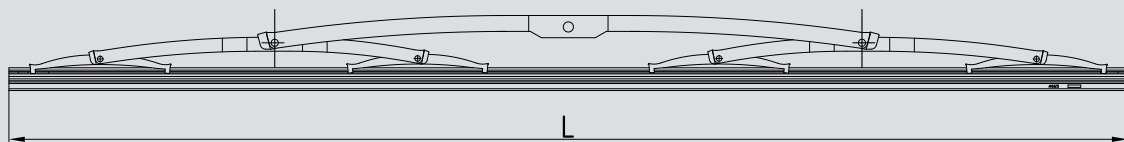
Blades "Truck"

Bridge connection



Dati tecnici / Technical Data

| L (mm) | 600 | 650 | 700 | 800 | 900 | 1000 | 1200 | 1300 |
|----------|-----|-----|-----|-----|-----|------|------|------|
| C | X | X | X | X | - | - | - | - |
| D | - | - | - | - | X | X | X | X |



BLADES "TRUCK"