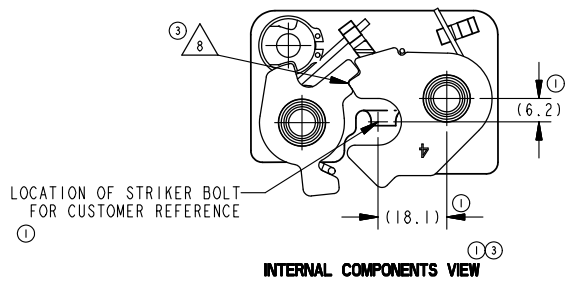
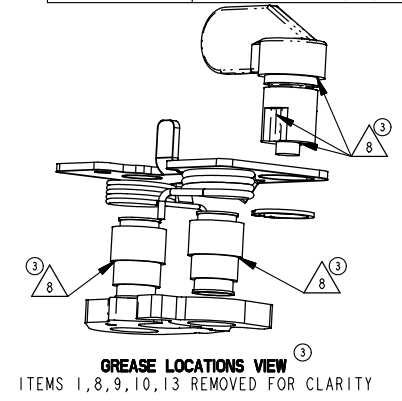
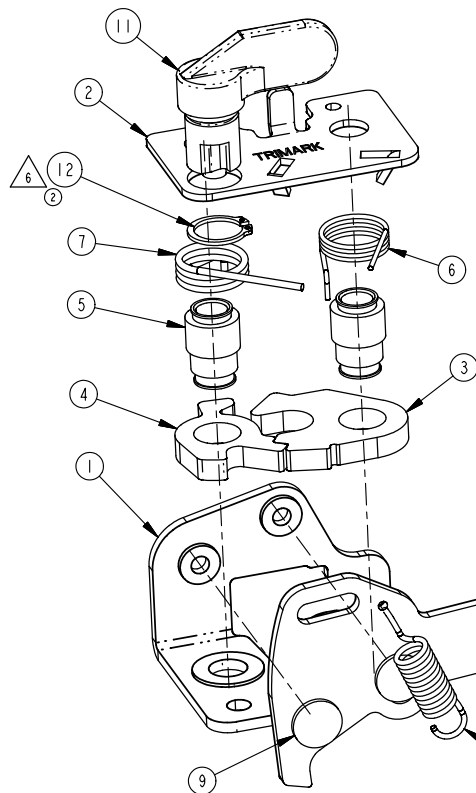
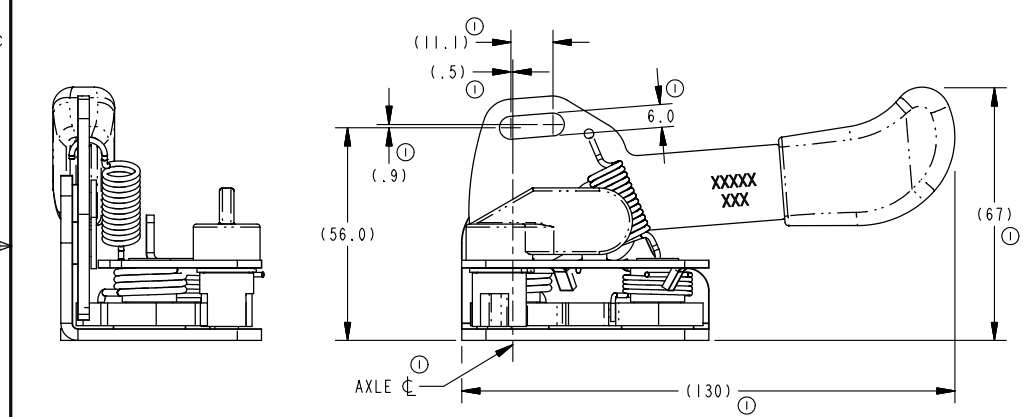
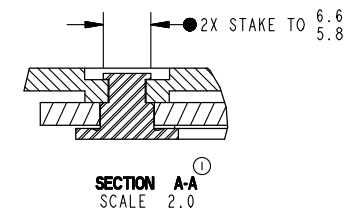
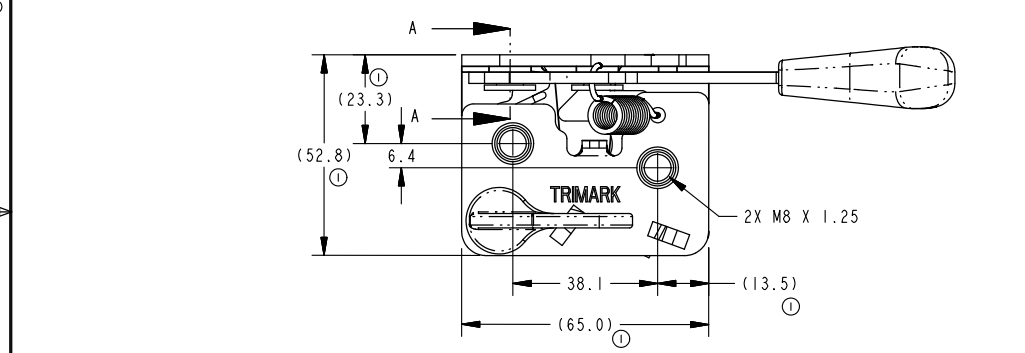


Part Number	ITEM 1 PLATE (QTY)	ITEM 2 PLATE (QTY)	ITEM 3 ROTOR (QTY)	ITEM 4 CATCH (QTY)	ITEM 5 AXLE (QTY)	ITEM 6 SPRING (QTY)	ITEM 7 SPRING (QTY)	ITEM 8 TRIP (QTY)	ITEM 9 RIVET (QTY)	ITEM 10 SPRING (QTY)	ITEM 11 ACTUATOR (QTY)	ITEM 12 CLIP (QTY)	ITEM 13 KNOB (QTY)	FINISH	PART MARKING
21409-01	21111-01 (1)	22786-01 (1)	21120-01 (1)	21121-01 (1)	21122-01 (2)	21113-01 (1)	21112-01 (1)	21125-01 (1)	80635-16 (2)	21089-01 (1)	16558-01 (1)	22601-01 (1)	21671-01 (1)	CLEAR CHROMATE	21409
21409-02	21111-02 (1)	22786-02 (1)	21120-02 (1)	21121-02 (1)				21125-02 (1)	80635-01 (2)					BLACK CHROMATE	

REV	DATE	BY	DESCRIPTION
A	PRE-REL	XXX	DD/MM/YY CREATED
B	PRE-REL	MJP	04/28/05 KNOB (ITEM 13) ADDED
C	PRE-REL	GCL	03/21/06 ENVELOPE AND MOUNTING DIMS ADDED, DESCRIPTION CHANGED, PLATE (ITEM 2) WAS 21119-XX.
0	RLSE	MJP	03/21/06 ADDED PART WEIGHT, RELEASED FOR PRODUCTION FROM REV C
1	12683	GDE	02/08/10 UPDATED: FIN, FORMAT, VIEW ORIENTATION, DESC. ADDED: SECTION VIEW A-A, PART MARK COLUMN, (65.0), (13.5), 6.0, (11.1), (.5), (.9), AXLE C NOTE, (56.0), STRIKER BOLT LOCATION NOTE, (18.1), (6.1), (52.8) WAS 53.8, (23.3) WAS 23.4, (133) WAS 129.6, (67) WAS 67.7, 21120-02 WAS 21120-01, 21121-02 WAS 21121-01, 16558-01 WAS 21128-01.
2	37558	AGG	12/05/11 22601-01 WAS 21129-01 (ITEM 12).
3	39665	GDE	2017-03-13 RELOCATED PART MARKING. UPDATED: NOTE 1, INTERNAL COMPONENTS VIEW. DELETED: NOTE 4. ADDED: NOTES (8,9),VIEW.



LOCATION OF STRIKER BOLT FOR CUSTOMER REFERENCE

- ③ NOTES: UNLESS OTHERWISE SPECIFIED
- ③ ① IDENTIFY ASSEMBLY WITH PART NUMBER AND DATE CODE APPROXIMATELY AS SHOWN, OR IN OTHER APPROVED LOCATIONS AS OUTLINED IN ES-121.
 - 2. AXLES TO WITHSTAND A MINIMUM OF 13.6 Nm [120 IN-LB] OF TORQUE.
 - 3. ROTOR TO FULLY ENGAGE THE CATCH IN THE PRIMARY AND SECONDARY POSITIONS WHEN CLOSED WITH A \varnothing 12.14 GAUGE PIN.
 - ⑤ ORIENTATION OF SPRING (ITEM 10) IS IMPORTANT.
 - ⑥ ORIENTATION OF CLIP (ITEM 12) IS NOT IMPORTANT.
 - 7. TIGHTEN MOUNTING FASTENERS TO FASTENER MANUFACTURER'S RECOMMENDED TORQUE VALUE; HOWEVER, DO NOT EXCEED 13.6Nm [120 IN-LB].
 - ③ ⑧ APPLY ALPHA 2000 GREASE (OR APPROVED EQUIVALENT) TO AREAS SHOWN.
 - ③ 9. OPPOSITE HAND ITEM IS 21117-XX.

TOLERANCES UNLESS OTHERWISE SPECIFIED		ASME Y14.5M-1994
INCH	MILLIMETER	
X.X = ±.1	X = ±.3	
X.XX = ±.03	X.X = ±.8	
X.XXX = ±.010	X.XX = ±.25	
ANGLES		
X° = ±3°		
X.X° = ±1.0°		
X.XX° = ±.50°		
DO NOT SCALE DRAWING		
REF. T/M OF 4.20-2 FOR SUP. QUALITY REQ. REF. T/M OF 4.20-3 FOR INT. QUALITY REQ.		

DRAWN BY		MJP		2005-04-28	
CHECKED BY		MLL		2005-04-28	
PROJECT		04006		PRODUCT CODE E35 (050-0700)	
CUSTOMER					
CUSTOMER PART NUMBER					
PART WEIGHT		(0.36 Kg)		SURFACE AREA	
SIZE		C		SCALE 1.0	
SHEET		1/1		PART NUMBER 21409	

TriMark
500 Bailey Avenue
P. O. Box 350
New Hampton, Iowa 50659 U.S.A.
Tel: 641-394-3188
Fax: 641-394-2392

This drawing and the information contained herein is the property of TriMark Corporation and shall not be used for any purpose without our written consent.

DESCRIPTION
050-0700, LH, 2POSN, M8x1.25, STR