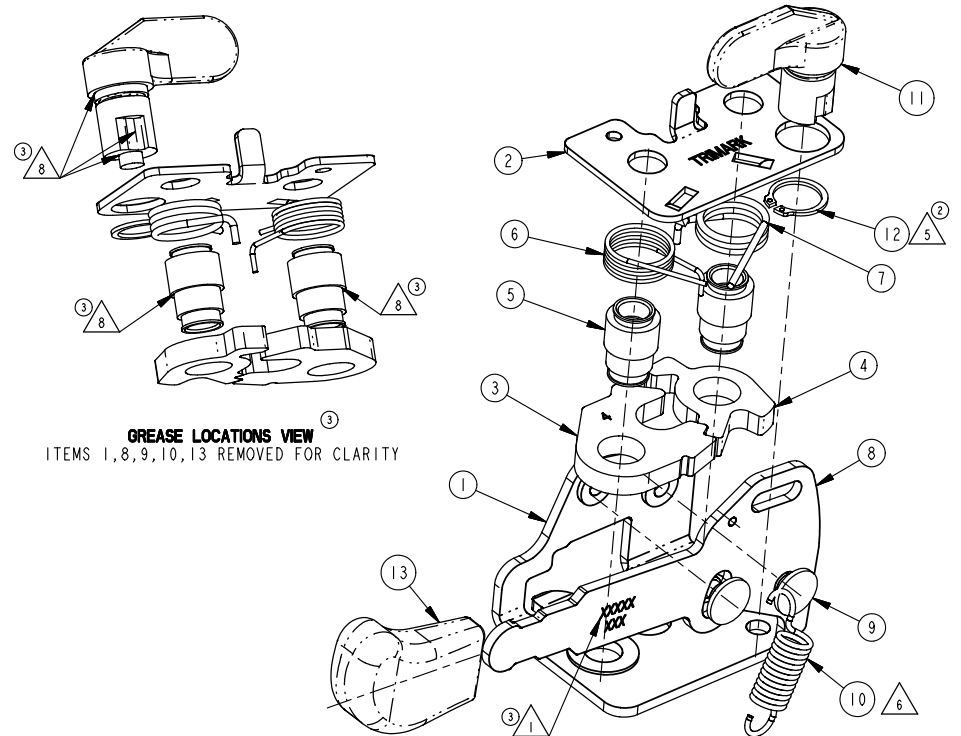
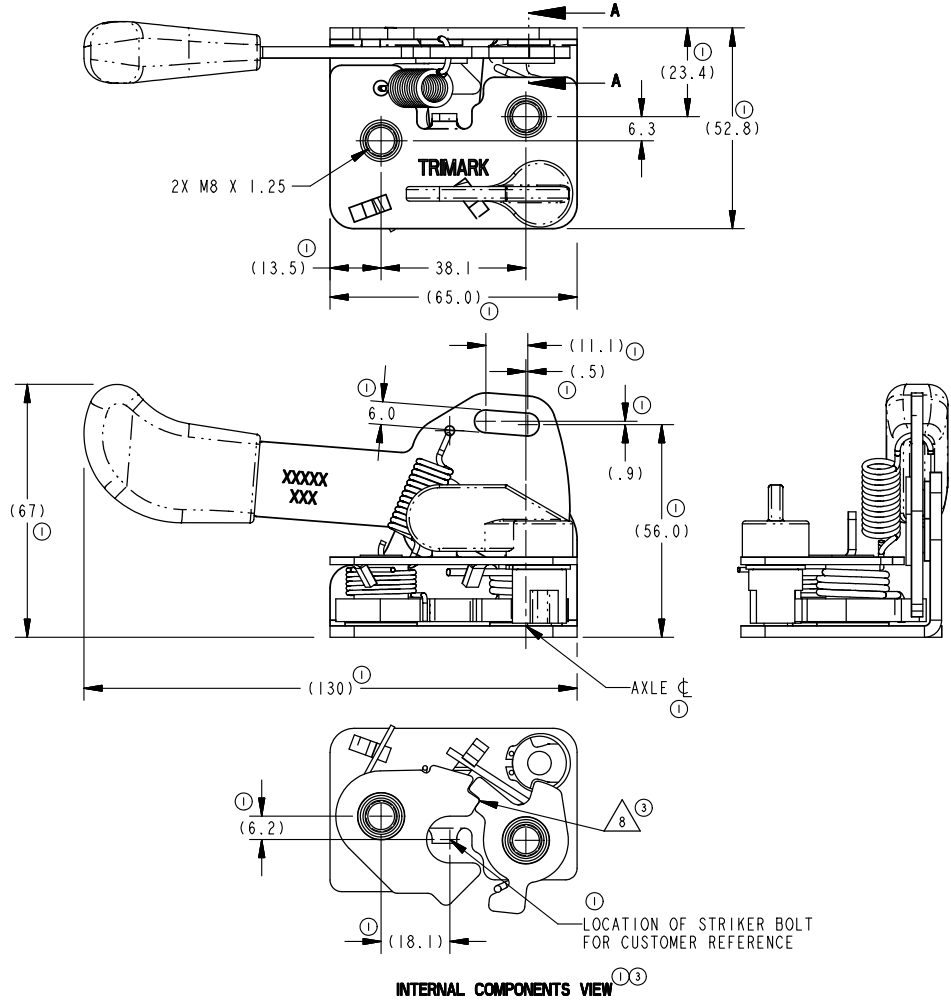


Part Number	ITEM 1 PLATE (QTY)	ITEM 2 PLATE (QTY)	ITEM 3 ROTOR (QTY)	ITEM 4 CATCH (QTY)	ITEM 5 AXLE (QTY)	ITEM 6 SPRING (QTY)	ITEM 7 SPRING (QTY)	ITEM 8 TRIP (QTY)	ITEM 9 RIVET (QTY)	ITEM 10 SPRING (QTY)	ITEM 11 ACTUATOR (QTY)	ITEM 12 CLIP (QTY)	ITEM 13 KNOB (QTY)	FINISH	PART MARKING
21117-01	21216-01 (1)	21119-01 (1)	21120-01 (1)	21121-01 (1)	21122-01 (2)	21124-01 (1)	21123-01 (1)	21125-01 (1)	80635-16 (2)	21089-01 (1)	16558-01 (1)	22601-01 (1)	21671-01 (1)	① CLEAR CHROMATE	21117
21117-02	21216-02 (1)	21119-02 (1)	21120-02 (1)	21121-02 (1)	②			21125-02 (1)	80635-01 (2)		①	②	① BLACK CHROMATE		

B	PRE-REL	MJP	04/28/05	KNOB (ITEM 13) ADDED
C	PRE-REL	MJP	03/21/06	ENVELOPE AND MOUNTING DIMS ADDED, DESCRIPTION CHANGED.
0	RLSE	MJP	04/12/06	PART WEIGHT ADDED, RELEASED FOR PRODUCTION FROM REV C
1	12683	GOE	02/08/10	UPDATED: FIN,FORMAT,VIEW ORIENTATION. ADDED: SECTION VIEW A-A,PART MARK COLUMN,(65.0),(13.5),6.0,(11.1),(1.5),(1.9),AXLE CL NOTE,(56.0),STRIKER BOLT LOCATION NOTE,(18.1),(6.1). 52.8 WAS 53.8,(23.3) WAS 23.4,(133) WAS 129.6,(67) WAS 67.7,21117-02 WAS 21122-01,16558-01 WAS 21128-01.
2	37558	AGG	12/02/11	22601-01 WAS 21129-01 (ITEM 12). 21122-01 WAS 21117-02 (ITEM 5).
3	39665	GOE	2017-03-14	RELOCATED PART MARKING. UPDATED: NOTE 1, INTERNAL COMPONENTS VIEW. DELETED: NOTE 4. ADDED: NOTES (8,9),VIEW.



GREASE LOCATIONS VIEW
ITEMS 1,8,9,10,13 REMOVED FOR CLARITY

- ③ NOTES: UNLESS OTHERWISE SPECIFIED;
- ③ ① IDENTIFY ASSEMBLY WITH PART NUMBER AND DATE CODE APPROXIMATELY AS SHOWN, OR IN OTHER APPROVED LOCATIONS AS OUTLINED IN ES-121.
 - 2. AXLES TO WITHSTAND A MINIMUM OF 13.6 Nm [120 IN-LB] OF TORQUE.
 - 3. ROTOR TO FULLY ENGAGE THE CATCH IN THE PRIMARY AND SECONDARY POSITIONS WHEN CLOSED WITH A Ø12.14 GAUGE PIN.
 - 5. ORIENTATION OF RETAINING RING (ITEM 12) IS NOT IMPORTANT.
 - 6. ORIENTATION OF SPRING (ITEM 10) IS IMPORTANT.
 - 7. TIGHTEN MOUNTING FASTENERS TO FASTENER MANUFACTURER'S RECOMMENDED TORQUE VALUE; HOWEVER, DO NOT EXCEED 13.6 Nm [120 IN-LB].
 - ③ ⑧ APPLY ALPHA 2000 GREASE (OR APPROVED EQUIVALENT) TO AREAS SHOWN.
 - ③ 9. OPPOSITE HAND ITEM IS 21409-XX.

TOLERANCES UNLESS OTHERWISE SPECIFIED		DRAWN BY		MJP		04/28/05	
UNLESS OTHERWISE SPECIFIED		CHECKED BY		MLL		04/28/05	
ASME Y14.5M-1994		PROJECT		04006		PRODUCT CODE	
E35 (050-0700)		CUSTOMER					
CUSTOMER PART NUMBER							
PART WEIGHT		SURFACE AREA		SIZE		SCALE	
(0.36 Kg)				C		1.0	
SHEET		PART NUMBER		21117			
1/1							

TriMark
 500 Bailey Avenue
 P. O. Box 350
 New Hampton, Iowa 50659 U.S.A.
 Tel: 641-394-3188
 Fax: 641-394-2392

This drawing and the information contained herein is the property of TriMark Corporation and shall not be used for any purpose without our written consent.

DESCRIPTION
 050-0700, RH, 2POSN, M8X1.25, STR