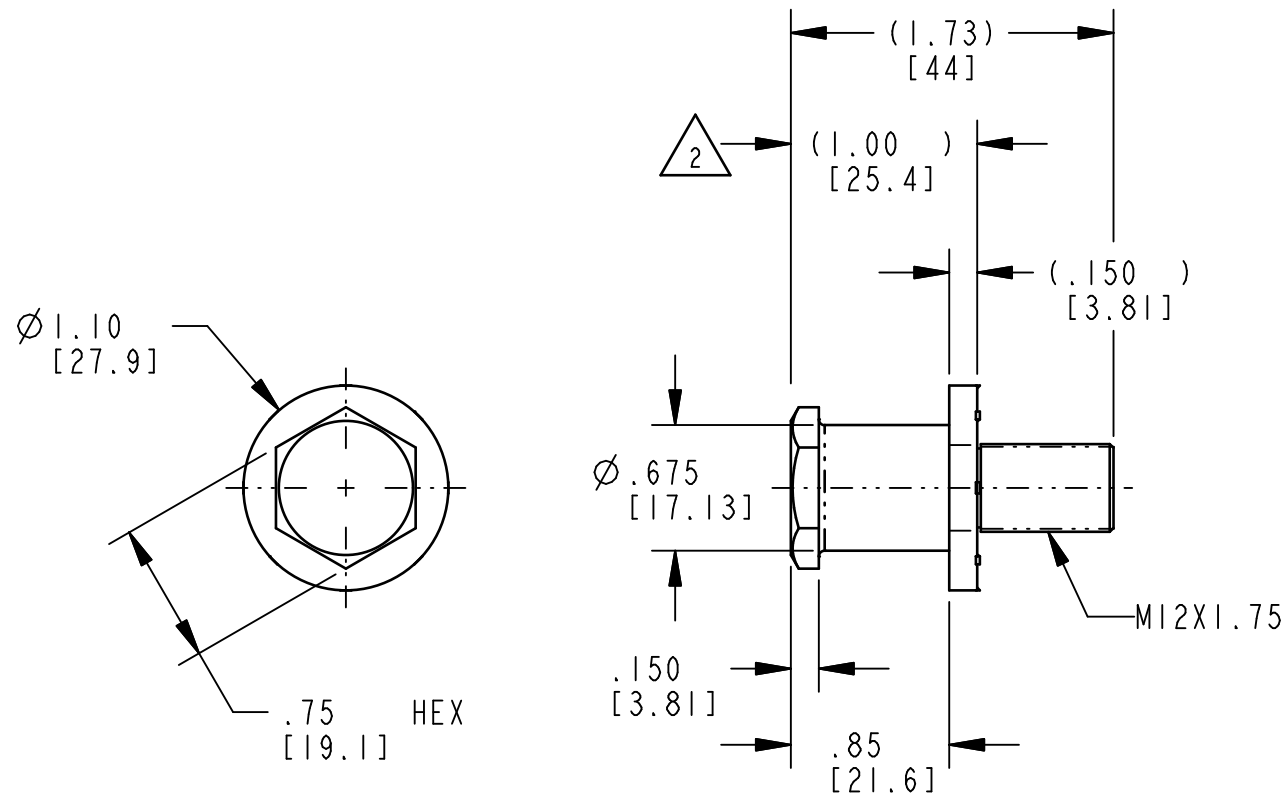
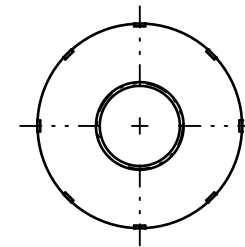


REVISION	ECO	BY	CHECKED	DESCRIPTION
0	RLSE	TEB 2/10/03	MLH 2/10/03	RELEASED

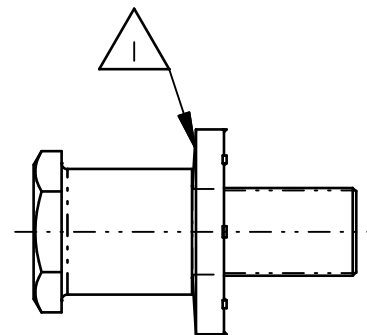


**INSTALLED DIMENSIONS**



**NOTES:**

1. WASHER ORIENTATION IMPORTANT.
2. WASHER SHOWN IN INSTALLED POSITION.
3. DIMENSIONS IN [ ] ARE MILLIMETERS FOR REFERENCE ONLY.
4. INSTALLATION TORQUE 75 FT-LBS MINIMUM DEPENDING UPON SURFACE CONDITIONS OF THREADS.
5. PLATED THREADS TO BE INSPECTED WITH A M12X1.75 -6h OR -4h GO RING GAUGE



**UNINSTALLED CONDITION**

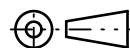
<b>DRAWN BY</b>	TEB	2/10/03
<b>CHECKED BY</b>	MLH	2/10/03
<b>DESIGN ENG.</b>		
<b>PROD. MNGR.</b>		

**TOLERANCES UNLESS OTHERWISE SPECIFIED**  
ASME Y14.5M-1994

INCH	MILLIMETER
X.X = ±.1	X = ±3
X.XX = ±.03	X.X = ±.8
X.XXX = ±.010	X.XX = ±.25

**ANGLES**

X°	±3°
X.X°	±1.0°
X.XX°	±.50°



<b>MATERIAL</b>		<b>HEAT TREAT</b>	
<b>FINISH</b>		<b>PROJECT</b>	
<b>CUSTOMER</b>		<b>CUSTOMER PART NUMBER</b>	
<b>SIZE</b>	<b>PART WEIGHT</b>	<b>SURFACE AREA</b>	<b>PRODUCT CODE</b>
B			G03(070-0200)
<b>REPORT ERRORS TO ENGINEERING DEPARTMENT</b>		<b>DO NOT SCALE DRAWING</b>	

**TriMark®**

500 Bailey Avenue  
P. O. Box 350  
New Hampton, Iowa 50659 U.S.A.  
Tel: 641-394-3188  
Fax: 641-394-2392

This drawing and the information contained herein is the property of TriMark Corporation and shall not be used for any purpose without our written consent.

<b>DESCRIPTION</b>			
ASSY, BLT/W SHR, 1.000 SHLDR, M12X1.75			
<b>SCALE</b>	<b>REVISION</b>	<b>TYPE</b>	<b>PART NUMBER</b>
FULL	0	PR	11111