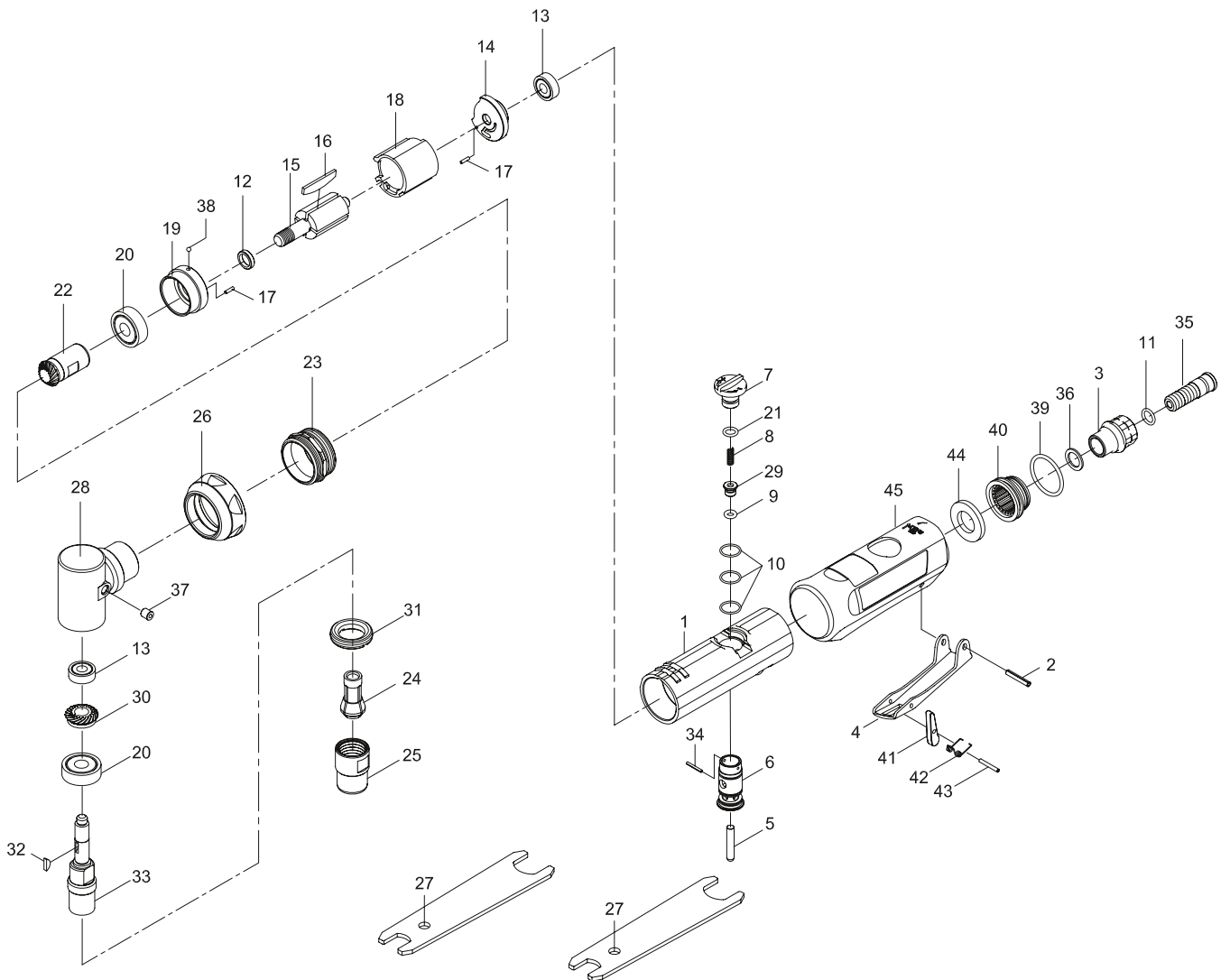


# Die grinder, 90° angle

K 9811



**KR 9810-1** Engine repair kit: Pos 8, 9, 10, 11, 16, 21, 29, 39

**KR 9811-2** Gearing repair kit: Pos 13, 20, 25, 39

**KR 9810-3** Throttle set: Pos 2, 4, 5, 41, 42, 43

**KR 9810-4** Air inlet kit: Pos 3, 11, 30, 31, 32, 33, 37

Pos.	Parts No.	Description
1		Motor housing
2	KR 9810-3	Lever pin
3	KR 9810-4	Air inlet
4	KR 9810-3	Throttle lever
5	KR 9810-3	Valve shaft
6		Valve
7		Knob
8	KR 9810-1	Spring
9	KR 9810-1	O-ring
10	KR 9810-1	O-ring (3 pcs.)
11	KR 9810-1, KR 9810-4	O-ring
12		Rotor spacer
13	KR 9811-2	Ball bearing (2 pcs.)
14		Rear end plate
15		Rotor
16	KR 9810-1	Vane (4 pcs.)
17		Spring pin (2 pcs.)
18		Cylinder
19		Front end plate
20	KR 9811-2	Ball bearing (2 pcs.)
21	KR 9810-1	O-ring
22		Pinion gear
23		Front coupling

Pos.	Parts No.	Description
24		Collet
25	KR 9811-2	Collet nut
26		Front cap
27		Spanner (2 pcs.)
28		Head
29	KR 9810-1	Throttle valve
30	KR 9810-4	Bevel gear
31	KR 9810-4	Lock ring
32	KR 9810-1, KR 9810-2, KR 9810-4	Key
33	KR 9810-4	Spindle
34		Spring pin
35		Fixed shaft
36		Washer
37	KR 9810-4	Oil cap
38		Steel ball
39	KR 9810-1, KR 9811-2	O-ring
40		Deflector
41	KR 9810-3	Safety bar
42	KR 9810-3	Spring
43	KR 9810-3	Spring pin
44		Damping material
45		Grip