



## **Compact Rearview Color Camera**

---

**MXN27C(H)**

**User's Manual**



**MXN27C(H) Professional Series**

# Compact Rearview Color Camera

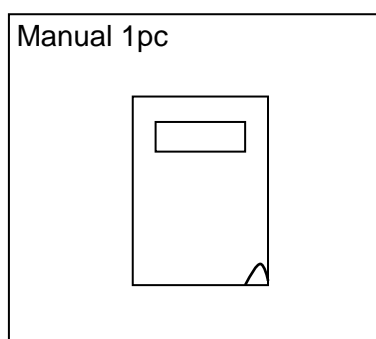
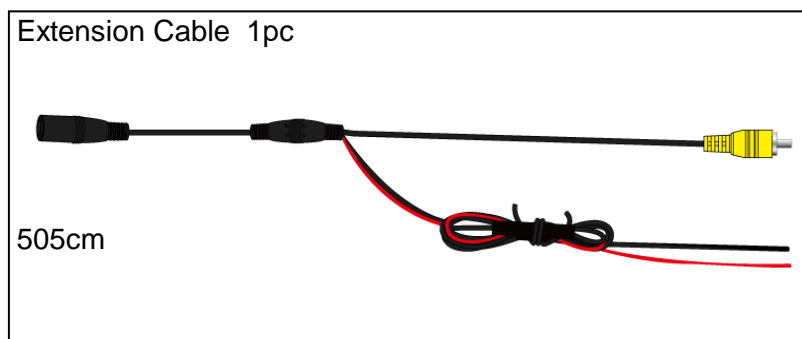
## FEATURES

- High-Resolution 1/3" Color CMOS Camera
- Compact Camera
- Mirror Image (Normal Image selectable)
- Waterproof Housing (IP-68)
- Low-illumination
- Low Power Consumption
- Diagonal 145° Viewing
- Small connector type in order to avoid drilling of big holes
- Operating temperature -40°C ~ +80°C
- Anti-corrosive coating
- CE Marked
- EMC approved

## SPECIFICATION

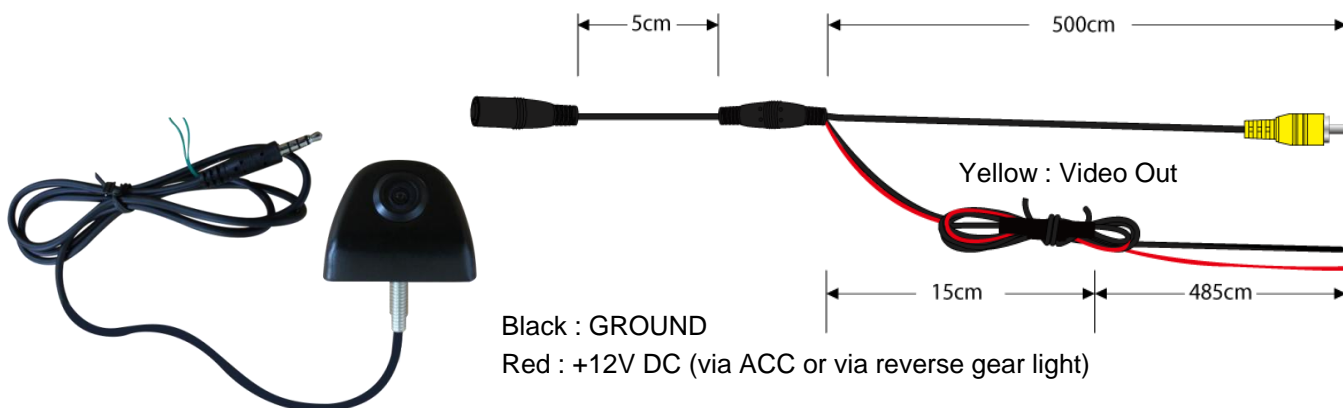
Image sensor	1/3" Color CMOS Image Sensor
Effective Pixels	410K
Horizontal Resolution	560 TV Lines
Current Consumption	at DC 12V, 40mA (Max)
Operating Voltage	DC12V ( 5V~ 24V )
Lens	145°(D), 114°(H), 84°(V) F= 1.5
Video Output	1.0V p-p composite, 75 ohm
Shutter Control	1/50 ~ 1/100,000 sec.
S/N Ratio	More Than 48dB
Operating Temp	-40°C ~ +80°C
Min. illumination	0.1 Lux
Cable Length	Camera 1m, Extension 5m
Measurement (Camera)	39mm(D) x 26.5(L) x 20mm, Gate Hole Ø 6mm
Material	Aluminium
Material Color	Black
Weight	Approx. 95g

## COMPOSITION



# Compact Rearview Color Camera

## CONNECTION

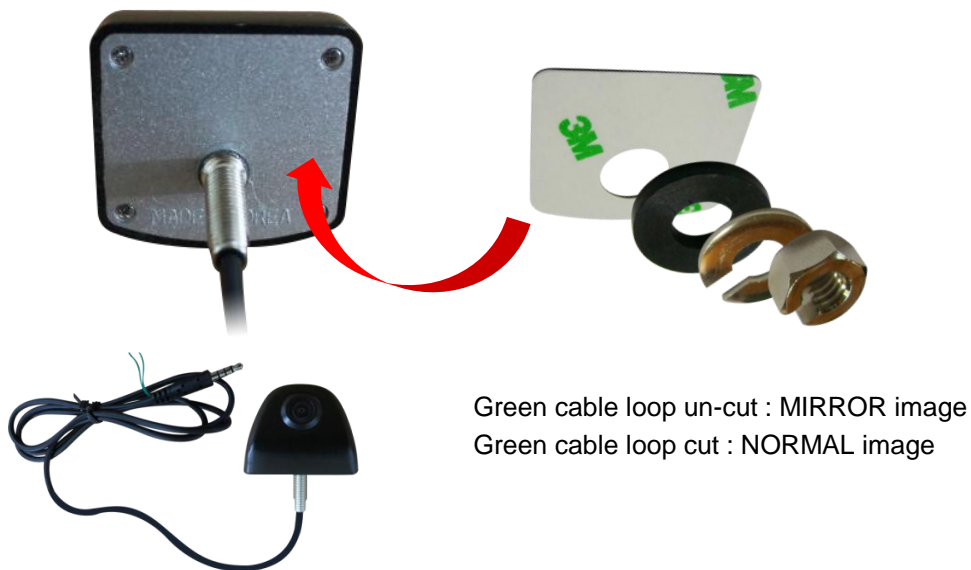


## INSTALLATION

Wipe away all oil and dirt etc. from the mounting surface.

Make connections and placement tentatively in advance, to decide positions.

- ① The diameter of drilling hole should be  $\varnothing$  6mm.
- ② Attach the two side tape on the camera body and place the camera in position.
- ③ Add the rubber washer, spring washer on the camera body and fix the nut.



Suitable for horizontal installation only as below:

