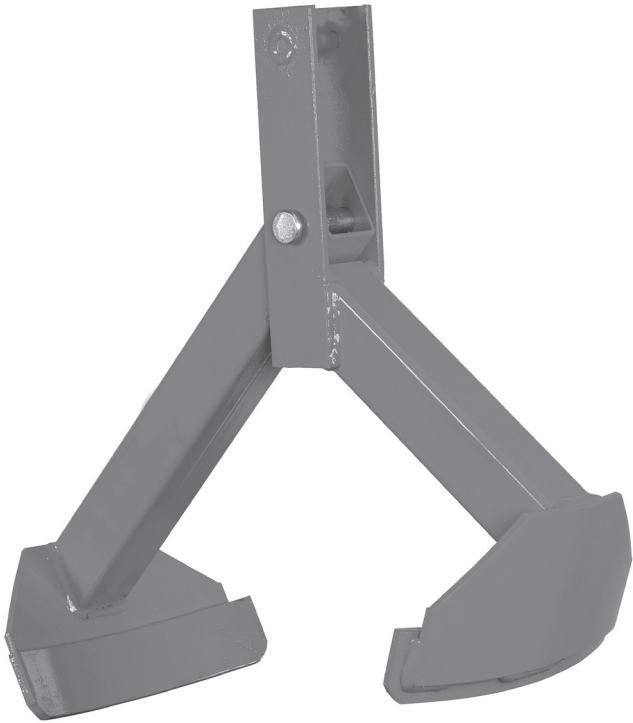




Barrel
lifting clamp

K 21229



CE

INSTRUCTIONS FOR USE

IMPORTANT

Read these instructions carefully in addition to the instructions for use, operation and maintenance and keep them in a safe place for future consultation.

Only authorized persons should use this barrel lifting clamp, having carefully read and understood the content of this manual.

This barrel lifting clamp has been designed for the lifting and movement of barrels and should be attached to a crane or other lifting equipment. It should not be used for any other type of work. Handle the barrel lifting clamp and crane correctly and ensure that all components are in good condition prior to use. Do not modify the clamp or the equipment to which it is attached in any way. Non-compliance with the instructions may result in injury or damage to the user, barrel lifting equipment or clamp. The manufacturer accepts no responsibility for any improper use.

SAFETY INSTRUCTIONS

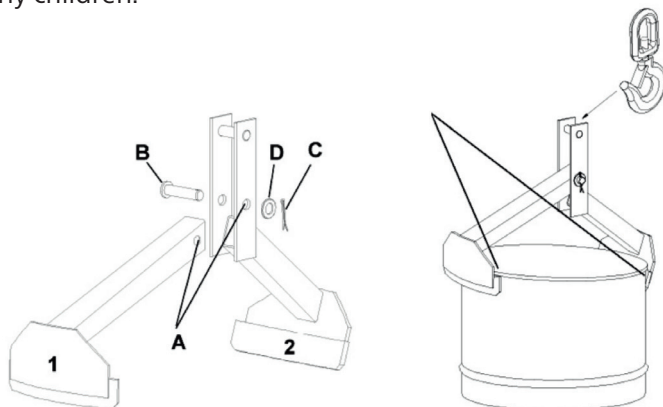
- 1 The rated capacity of the crane to which it is attached or that of the barrel lifting clamp shall never be exceeded (300 kg).
- 2 Keep the work area well illuminated and free of unnecessary elements and unauthorized persons, particularly children. Do not put any part of the body underneath the load and take all of the necessary precautions to avoid the barrel from slipping or moving.
- 3 When handling the clamp, keep hands away from the revolving center formed by the two arms (1 and 2) to avoid the scissors effect. The clamp lies horizontally when resting on the barrel, but closes immediately when it is lifted from the securing part or when linked to the crane, in case it has not been well secured under the flange of the barrel. These recommendations should also be taken into account when lowering the load and releasing the clamp.
- 4 The securing flange should be an integral part of the barrel. If the flange has a screw top, the lid should be sufficiently secured so it withstands the weight of the barrel during lifting and movement. Do not use the clamp with barrels with a removable flange or which are empty.
- 5 If the barrel needs to be moved using the crane, the surface should be firm, uniform and horizontal, free of obstacles and well illuminated. The elevation height should be as low as possible with respect to the ground.

USE AND OPERATION

- 1 The barrel lifting clamp is delivered unassembled so the two parts (1 and 2) need to be mounted, lining them up with the holes (A). Insert the axle (B), position the washer (D) and introduce the pin (C) into the hole in the axle, bending it to prevent it from coming out of the axle. Part 1 should now pivot freely.
- 2 Using both hands, position the arms (1 and 2) of the barrel horizontally below the flange of the barrel to be lifted and insert the hook of the crane into the elevation axle of the clamp, which is found on the vertical part of the arm (2).
- 3 When commencing the lifting operation, the two ends of the clamp will start to close. Check that the clamp is lined up with the diameter of the barrel and that the wedge located on each side of the two arms (1 and 2) is perfectly positioned under the flange of the barrel to be lifted.
- 4 Having checked the above mentioned, proceed to gently lift the barrel.
- 5 Before putting down the barrel again, check that the surface where it is going to be placed is firm, regular and horizontal and free from obstacle or persons.
- 6 When removing the clamp from the barrel and the hook of the crane, keep hands and fingers away from the revolving area to avoid trapping them in accordance with the instructions in point 1.3. Safety instructions.
- 7 If the clamp has been damaged, do not use it again until it has been repaired.

MAINTENANCE

Lubricate the revolving axis (B) regularly, verify the weldings, keep the clamp clean and store it out of reach of non-authorized persons, particularly children.





K 21229

www.kamasatools.com