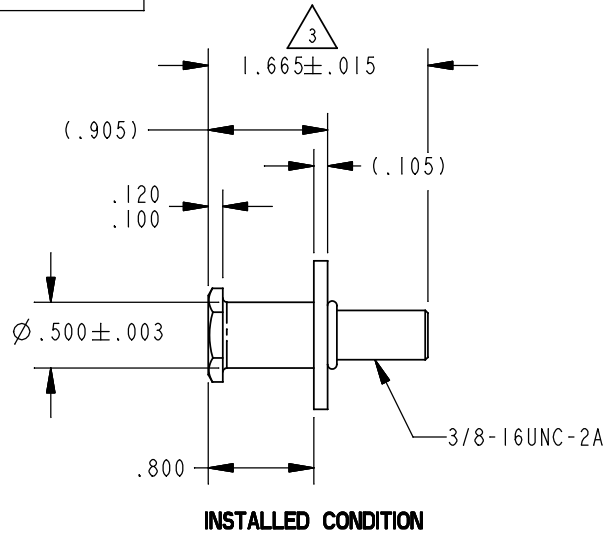
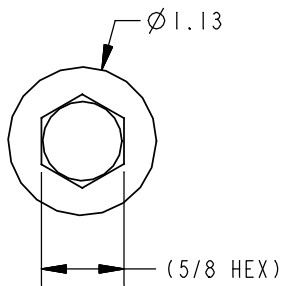


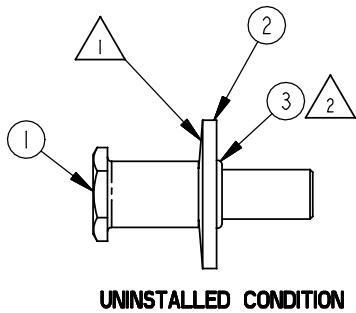
PART NUMBER	ITEM 1 BOLT (QTY)	ITEM 2 WASHER (QTY)	ITEM 3 O-RING (QTY)	PACKAGING
10335-16				STANDARD PACKAGING
10335-16-BX	80591-16 (1)	80596-16 (1)	19680-01 (1)	SPECIAL PACKAGING 160 PCS/BOX

REVISION	ECO	BY	CHECKED	DESCRIPTION
13	19703	MLH 9/29/03	GDE 9/29/03	REVISED TO NEW STANDARD



NOTES:

- WASHER ORIENTATION IMPORTANT.
- FUNCTION OF O-RING (LOCATED APPROXIMATELY AS SHOWN) IS TO RETAIN THE WASHER UNTIL THE STRIKER BOLT IS INSTALLED. DIMENSION INDICATES BLANK SIZE PRIOR TO ROLLING THREADS.
- PLATED THREADS TO BE INSPECTED WITH A 3/8-16 3A GO RING GAUGE.
- 5. INSTALLATION TORQUE 35 FT-LBS MINIMUM DEPENDING UPON SURFACE CONDITION OF THREADS.



● INDICATES REQUIRED ASSEMBLY INFORMATION.

DRAWN BY	KPE	5/22/87	MATERIAL	
CHECKED BY	KER	5/26/87	HEAT TREAT	
DESIGN ENG.			FINISH	
PROD. MNGR.			PROJECT	CUSTOMER
TOLERANCES UNLESS OTHERWISE SPECIFIED ASME Y14.5M-1994 INCH MILLIMETER X.X ±.1 X ±.3 X.XX ±.03 X.X ±.8 X.XXX ±.010 X.XX ±.25 ANGLES X° ±.3° X.X° ±.1.0° X.XX° ±.50°			CUSTOMER PART NUMBER	
			SIZE	PART WEIGHT
			B	(.10 LBS)
			REPORT ERRORS TO ENGINEERING DEPARTMENT	
			DO NOT SCALE DRAWING	

TriMark®
 500 Bailey Avenue
 P. O. Box 350
 New Hampton, Iowa 50659 U.S.A.
 Tel: 641-394-3188
 Fax: 641-394-2392

This drawing and the information contained herein is the property of TriMark Corporation and shall not be used for any purpose without our written consent.

DESCRIPTION			
ASSY, BLT/WSHR, .905SHLDR, 3/8-16			
SCALE	REVISION	TYPE	PART NUMBER
FULL	13		10335-XX