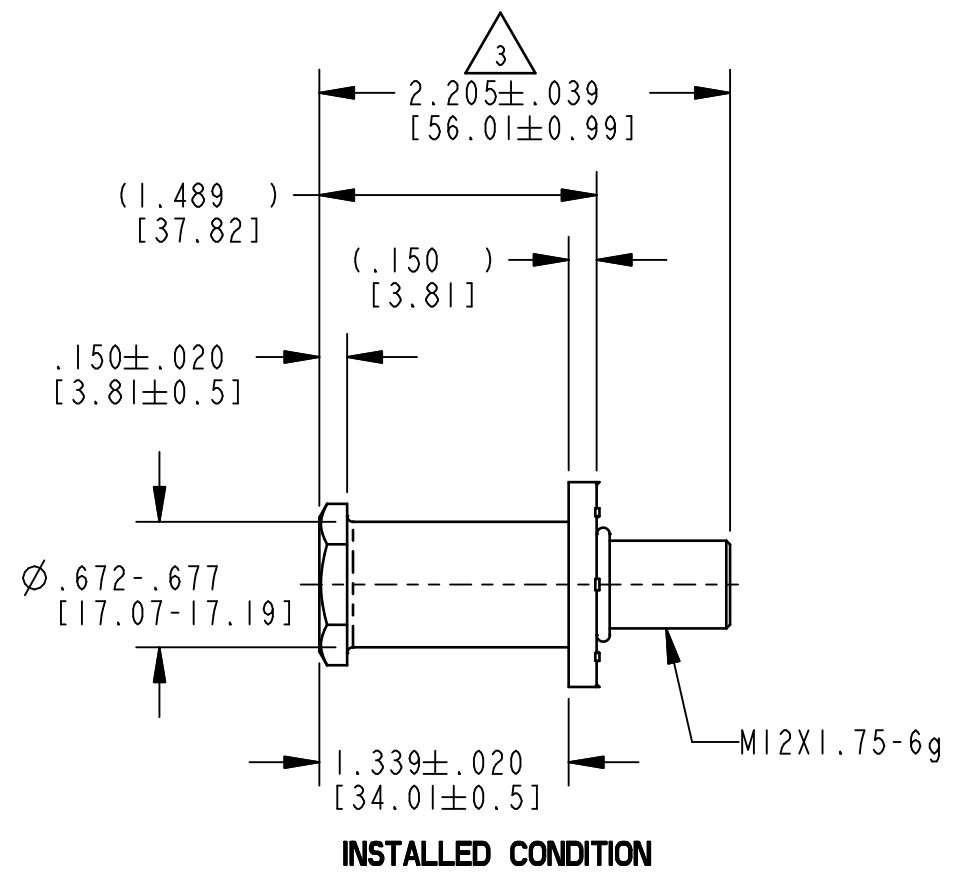
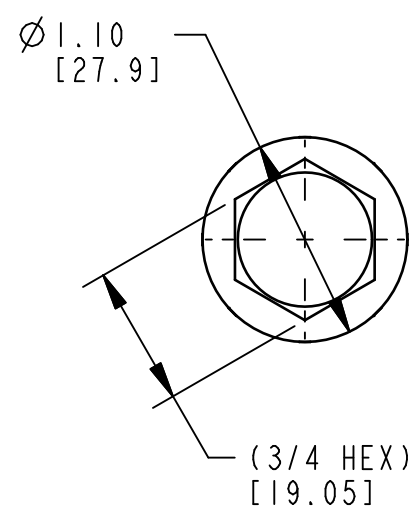

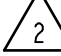



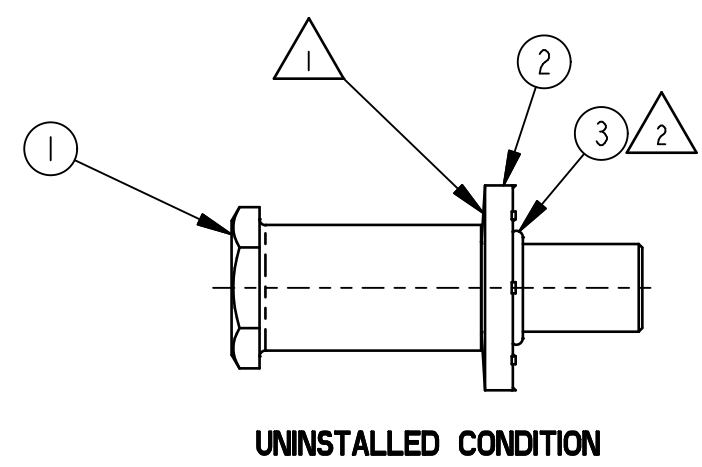
PART NUMBER	ITEM 1 BOLT (QTY)	ITEM 2 WASHER (QTY)	ITEM 3 O-RING (QTY)
11737-16	81392-16 (1)	80869-16 (1)	19680-01 (1)

REVISION	ECO	BY	CHECKED	DESCRIPTION
4	19707	MLH 9/23/03	GDE 9/23/03	REVISED TO NEW STANDARD



NOTES:

-  WASHER ORIENTATION IMPORTANT.
-  FUNCTION OF O-RING (LOCATED APPROXIMATELY AS SHOWN) IS TO RETAIN THE WASHER UNTIL THE STRIKER BOLT IS INSTALLED.
-  DIMENSION INDICATES BLANK SIZE PRIOR TO ROLLING THREADS.
- 4. PLATED THREADS TO BE INSPECTED WITH A M12X1.75-6h OR -4h GO RING GAUGE.
- 5. INSTALLATION TORQUE 75 FT-LBS MINIMUM DEPENDING UPON SURFACE CONDITION OF THREADS.
- 6. DIMENSIONS IN [] ARE MILLIMETERS FOR REFERENCE ONLY.



● INDICATES REQUIRED ASSEMBLY INFORMATION.

DRAWN BY	KPE	5/10/89	MATERIAL									
CHECKED BY	TMG	5/15/90	HEAT TREAT									
DESIGN ENG.			FINISH									
PROD. MNGR.			PROJECT	CUSTOMER								
TOLERANCES UNLESS OTHERWISE SPECIFIED ASME Y14.5M-1994 <table border="0"> <tr> <td>INCH</td> <td>MILLIMETER</td> </tr> <tr> <td>X.X = ±.1</td> <td>X = ±.3</td> </tr> <tr> <td>X.XX = ±.03</td> <td>X.X = ±.8</td> </tr> <tr> <td>X.XXX = ±.010</td> <td>X.XX = ±.25</td> </tr> </table> ANGLES X° = ±3° X.X° = ±1.0° X.XX° = ±.50°			INCH	MILLIMETER	X.X = ±.1	X = ±.3	X.XX = ±.03	X.X = ±.8	X.XXX = ±.010	X.XX = ±.25	CUSTOMER PART NUMBER	
			INCH	MILLIMETER								
X.X = ±.1	X = ±.3											
X.XX = ±.03	X.X = ±.8											
X.XXX = ±.010	X.XX = ±.25											
SIZE	PART WEIGHT	SURFACE AREA	PRODUCT CODE									
B	(.21 LBS)		G03 (070-0200)									
			REPORT ERRORS TO ENGINEERING DEPARTMENT									
			DO NOT SCALE DRAWING									

TriMark®
 500 Bailey Avenue
 P. O. Box 350
 New Hampton, Iowa 50659 U.S.A.
 Tel: 641-394-3188
 Fax: 641-394-2392

This drawing and the information contained herein is the property of TriMark Corporation and shall not be used for any purpose without our written consent.

DESCRIPTION			
ASSY, BLT/W SHR, 1.489 SHLDR, M12X1.75			
SCALE	REVISION	TYPE	PART NUMBER
FULL	4		11737-XX