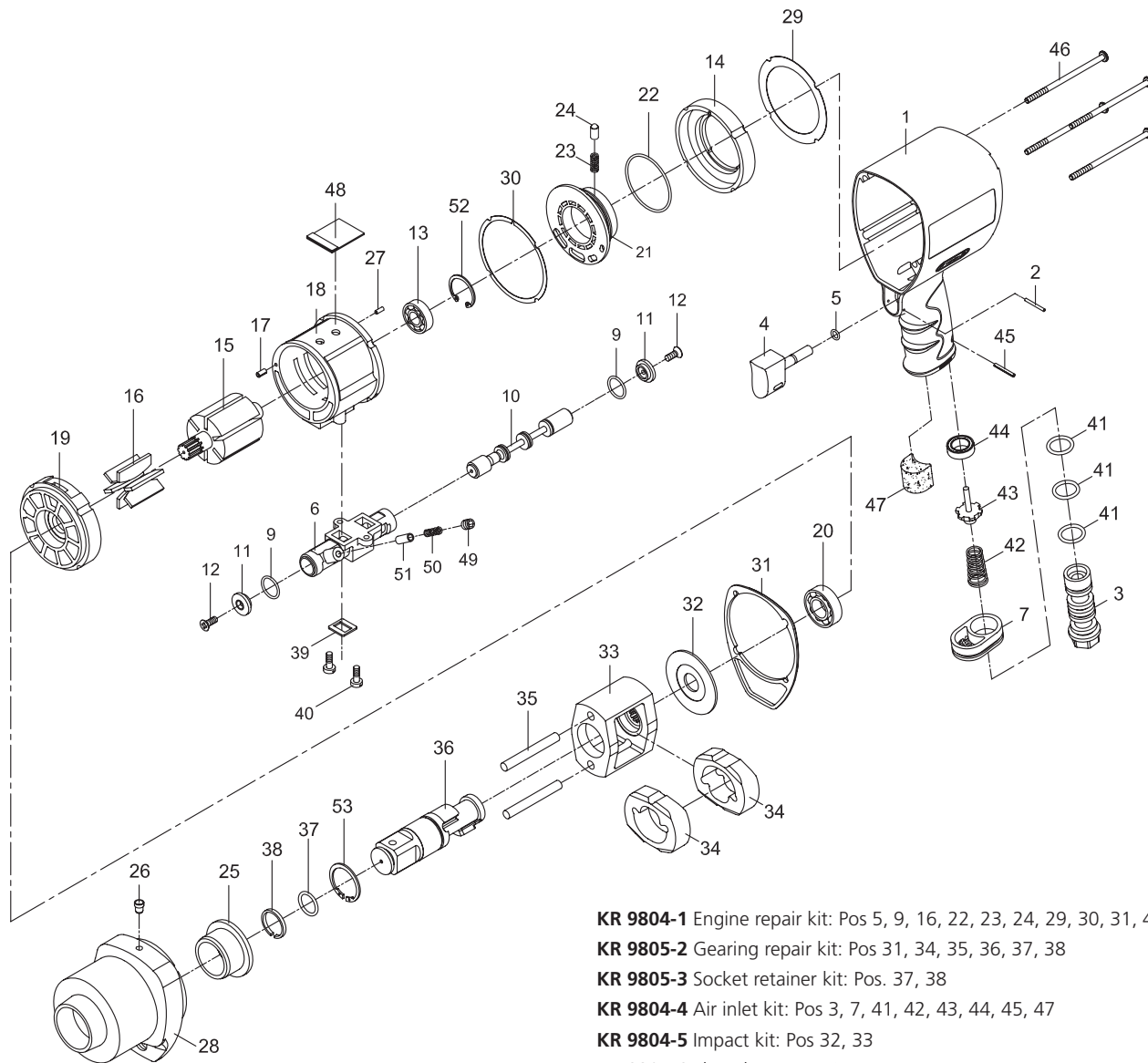


# 1" Professional impact wrench

K 9805



- KR 9804-1** Engine repair kit: Pos 5, 9, 16, 22, 23, 24, 29, 30, 31, 41, 44, 50, 51
- KR 9805-2** Gearing repair kit: Pos 31, 34, 35, 36, 37, 38
- KR 9805-3** Socket retainer kit: Pos. 37, 38
- KR 9804-4** Air inlet kit: Pos 3, 7, 41, 42, 43, 44, 45, 47
- KR 9804-5** Impact kit: Pos 32, 33
- KR 9804-6** Throttle set: Pos 2, 4, 5
- KR 9804-7** Reverse kit: Pos 6, 9, 10, 11, 12, 39, 49, 50, 51
- KR 9804-29** Gasket
- KR 9804-30** Gasket
- KR 9804-32** Washer

Pos.	Parts No.	Description
1		Motor housing
2	KR 9804-6	Spring pin
3	KR 9804-4	Air inlet
4	KR 9804-6	Trigger
5	KR 9804-1, KR 9804-6	O-ring
6	KR 9804-7	Reverse valve
7	KR 9804-4	Exhaust diffuser
9	KR 9804-1, KR 9804-7	O-ring (2 pcs.)
10	KR 9804-7	Reverse stem
11	KR 9804-7	Button (2 pcs.)
12	KR 9804-7	Screw (2 pcs.)
13		Ball bearing
14		Fixed ring
15		Rotor
16	KR 9804-1	Rotor blade (6 pcs.)
17		Spring pin
18		Cylinder
19		Front end plate
20		Ball bearing
21		Air regulator
22	KR 9804-1	O-ring
23	KR 9804-1	Spring
24	KR 9804-1	Steel ball
25		Anvil bushing
26		Oil cap
27		Spring pin

Pos.	Parts No.	Description
28		Hammer case
29	KR 9804-1, KR 9804-29	Gasket
30	KR 9804-1, KR 9804-30	Gasket
31	KR 9804-1, KR 9805-2	Gasket
32	KR 9804-5, KR 9804-32	Washer
33	KR 9804-5	Hammer cage
34	KR 9805-2	Hammer (2 pcs.)
35	KR 9805-2	Hammer pin (2 pcs.)
36	KR 9805-2	Anvil
37	KR 9805-2, KR 9805-3	O-ring
38	KR 9805-2, KR 9805-3	Retaining ring
39	KR 9804-7	Gasket
40		Screw (2 pcs.)
41	KR 9804-1, KR 9804-4	O-ring (3 pcs.)
42	KR 9804-4	Valve spring
43	KR 9804-4	Valve stem
44	KR 9804-1, KR 9804-4	Rubber spacer
45	KR 9804-4	Spring pin
46		Screw (4 pcs.)
47	KR 9804-4	Muffler material
48		Muffler material
49	KR 9804-7	Set screw
50	KR 9804-1, KR 9804-7	Spring
51	KR 9804-1, KR 9804-7	Pin
52		Retaining ring
53		Inverted retaining ring