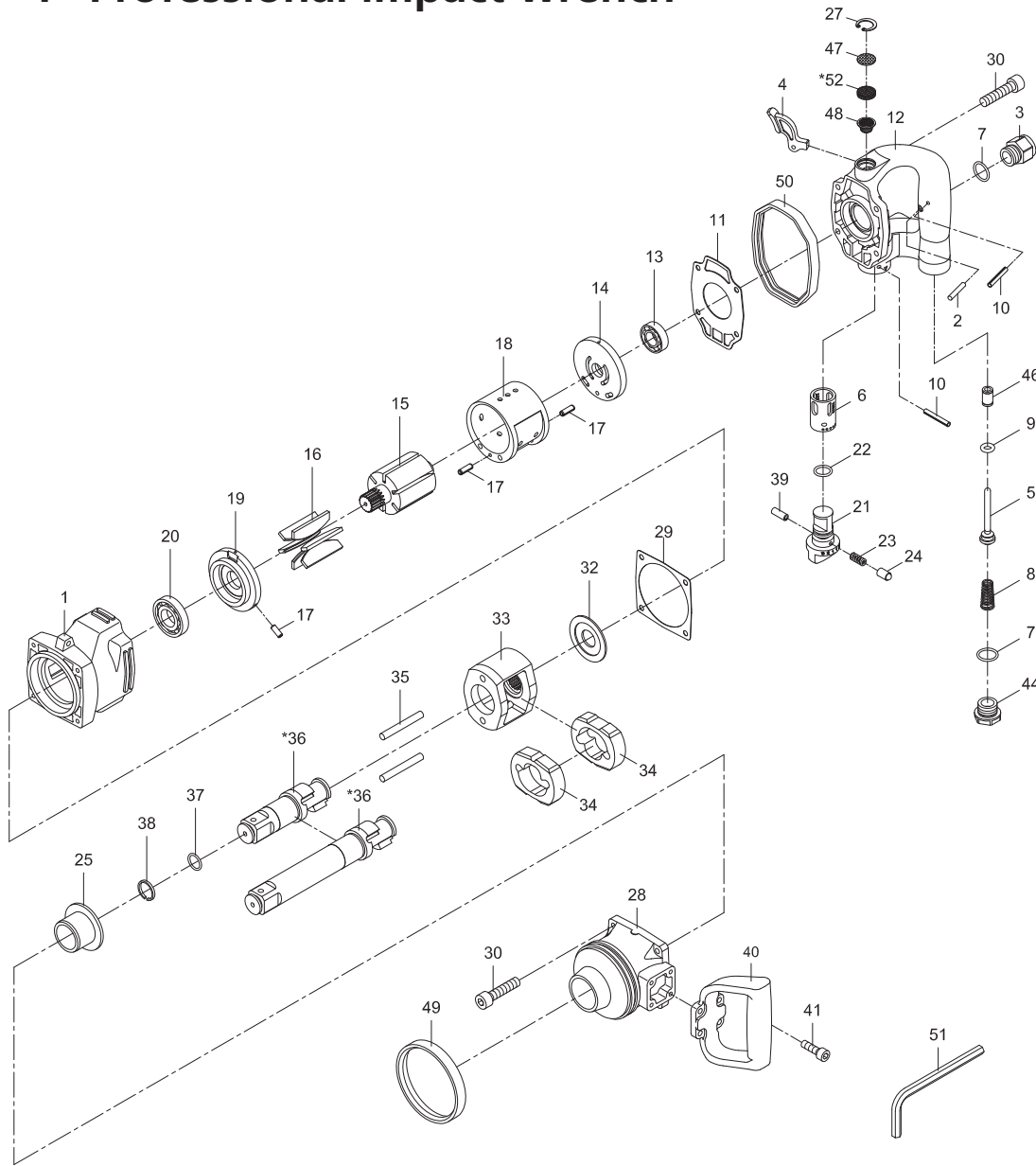


# 1" Professional impact wrench

K 10385  
K 10386



**K 10389** Valve kit: Pos 5, 7, 8, 9, 46

**K 10390** Air inlet kit: Pos 3, 7

**K 10391** Engine kit: Pos 11, 16, 22, 23, 24

**K 10392** Cage: Pos 33

**K 10393** Gearing kit: Pos 29, 34, 35

**K 10394** Anvil L=2": Pos 36, 37, 38

**K 10395** Anvil L=7": Pos 36, 37, 38

**K 10396** Bearing kit: Pos 13, 20

Pos.	Parts No.	Description
1		Motor housing
2		Pin
3	K 10390	Air inlet
4		Trigger
5	K 10389	Valve stem
6		Valve bushing
7	K 10389, K 10390	O-ring (2 pcs.)
8	K 10389	Valve spring
9	K 10389	O-ring
10		Spring pin (2 pcs.)
11	K 10391	Gasket
12		Rear cover
13	K 10396	Ball bearing
14		Rear end plate
15		Rotor
16	K 10391	Rotor blade (6 pcs.)
17		Spring pin (3 pcs.)
18		Cylinder
19		Front end plate
20	K 10396	Ball bearing
21		Air regulator
22	K 10391	O-ring
23	K 10391	Spring
24	K 10391	Pin

Pos.	Parts No.	Description
25		Anvil bushing
27		Internal ring
28		Hammer case
29	K 10393	Gasket
30		Screw (8 pcs.)
32		Washer
33	K 10392	Hammer cage
34	K 10393	Hammer
35	K 10393	Hammer pin (2 pcs.)
36*	K 10394 K 10395	Anvil L=2" Anvil L=7"
37	KR 9805-2	O-ring
38	KR 9805-2	Retainer ring
39		Spring pin
40		Dead handle
41		Screw (4 pcs.)
44		Screw
46	K 10389	Bushing
47		Net
48		Screen
49		Rubber ring
50		Rubber ring
51		Hex. key wrench
52		Muffler material