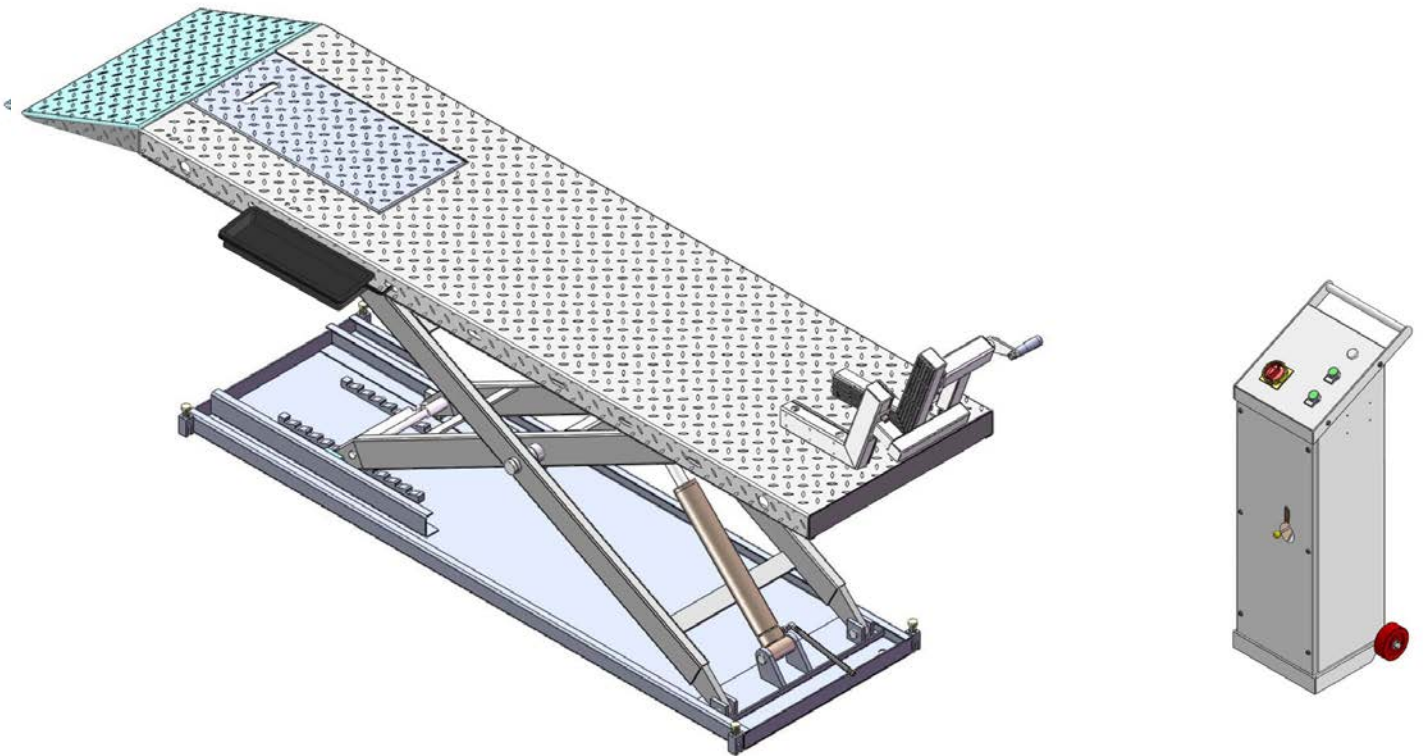




Installation And Service Manual



Motorcycle Lift

MC-600(H)

CONTENTS

I. Product Features and Specifications.....	2
II. Installation requirement.....	3
III. Steps of Installation.....	4
IV. Exploded View.....	9
V. Test Run.....	12
VI. Operation Instruction.....	13
VII. Maintenance.....	14
VIII. Trouble shooting.....	15
IX. MC-600 parts list.....	16

I .PRODUCT FEATURES AND SPECIFICATIONS

Motorcycle lift MC-600 (H):

- Hydraulic direct-drive cylinders, designed and made on ANSI standard, utilizing oil seal in cylinder
- Self-lubricating UHMW Polyethylene sliders and bronze bush
- Non-skid diamond platforms
- Automatic safety release system
- Optional: Width extension kit and platform extension kit

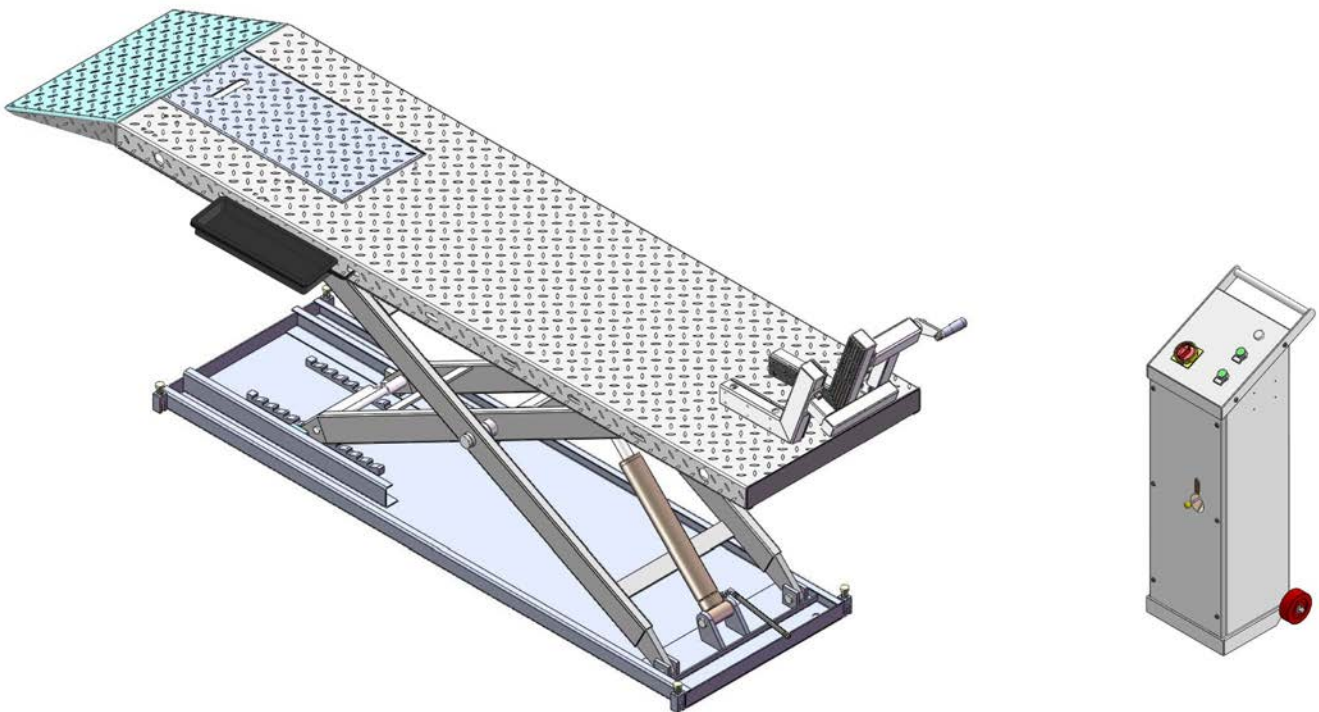


Fig.1

MODEL MC-600(H) SPECIFICATION

Model	Capacity	Lifting Height	Lifting Time	Overall Length	Overall Width	Minimum Height	Gross weight	Motor
MC-600(H)	600KG	1090mm	23s	2745mm	750mm	155mm	250kg	1.5HP

II . INSTALLATION REQUIREMENT

A. TOOLS REQUIRED

✓Rotary Hammer Drill (Φ19)



✓Screw



✓English Spanner (12")



✓Wrench Set: (13#, 15#, 17#, 19#)



✓Ratchet Spanner with Socket: (28#)



✓Grease gun



✓Hook Spanner (40~42mm)



✓Pliers



Fig.2

B. SPECIFICATIONS OF CONCRETE

Specifications of concrete must be adhere to the specifications as following. Failure to do so may result in lift and/or vehicle falling.

1. Concrete must be thickness 100mm minimum and without reinforcing steel bars, and must be dried completely before lift installation.
2. Concrete must be of test strength 210kg/cm² minimum.

C. POWER SUPPLY

The power capacity must be more than 2.2kw, The source cable size must be 2.5mm² and in good condition of contacting with floor.

III.STEPS OF INSTALLATION

A. Check the parts before assembly to make sure all the parts are completed.

1. Packaged cargo(lift, drive-in ramp, Parts box, control cabinet). Move the parts aside, open the outer packing and check the parts according to the shipment parts list. **see Fig.3**

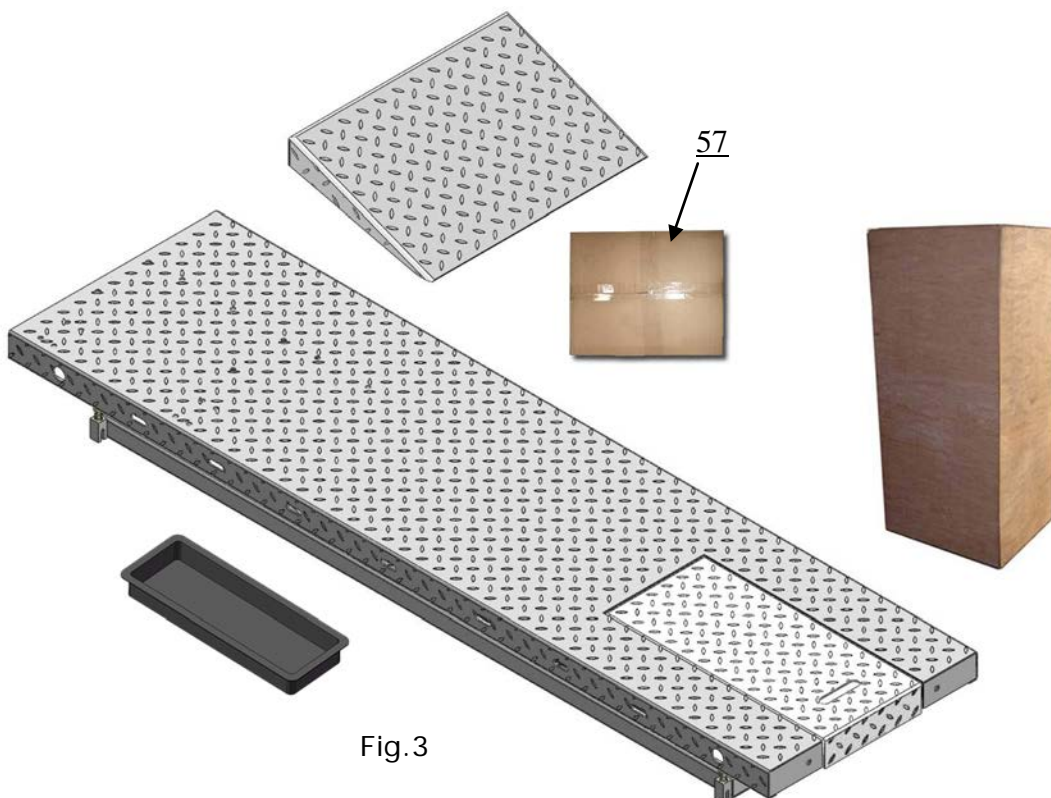
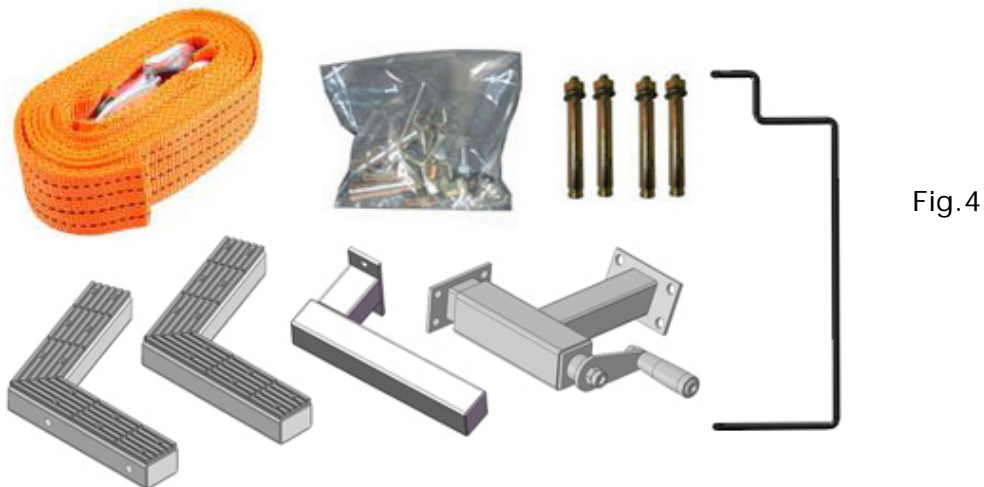


Fig.3

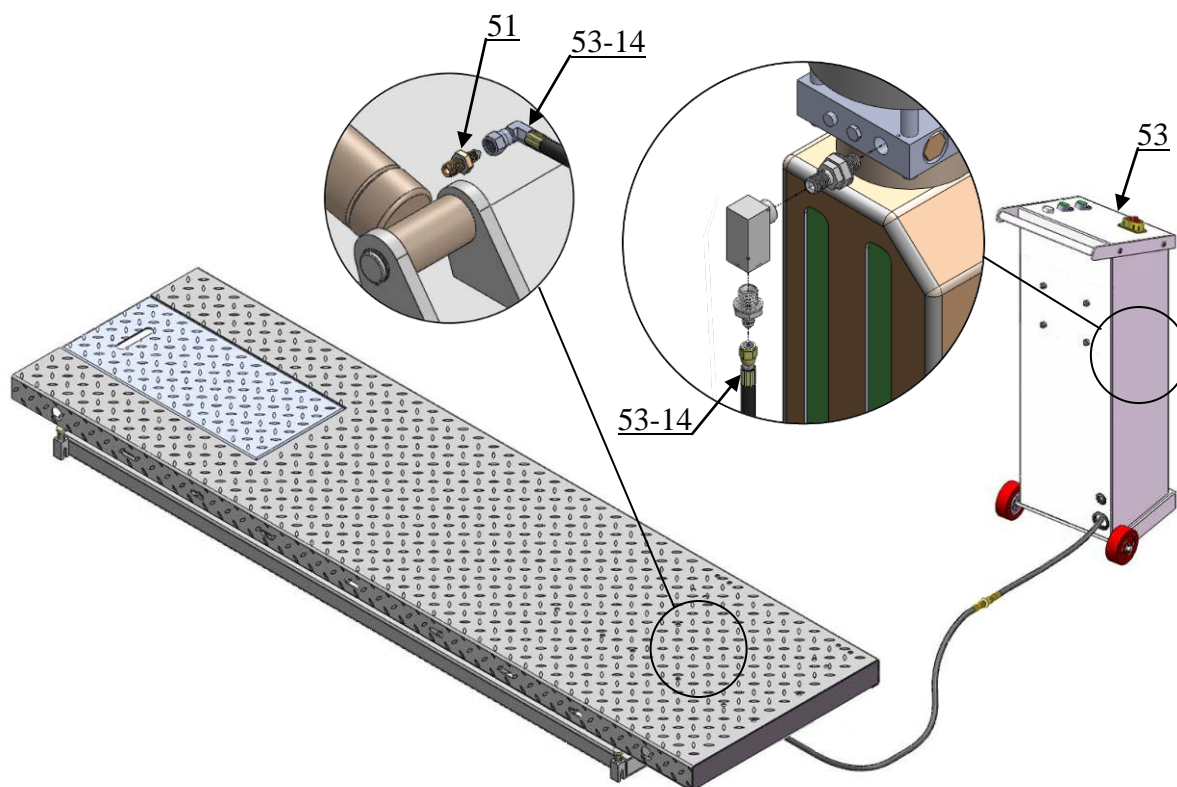
2. Open the parts box, check the parts according to the parts list (See Fig. 4).



3. Open the parts bag, check the parts according to the parts list (See Fig. 5).



B. Put the lift and control cabinet in good order and connect the oil hose, see Fig. 6



C. Install Electrical System

1. Connect the wire according to below diagram. (Fig.7)

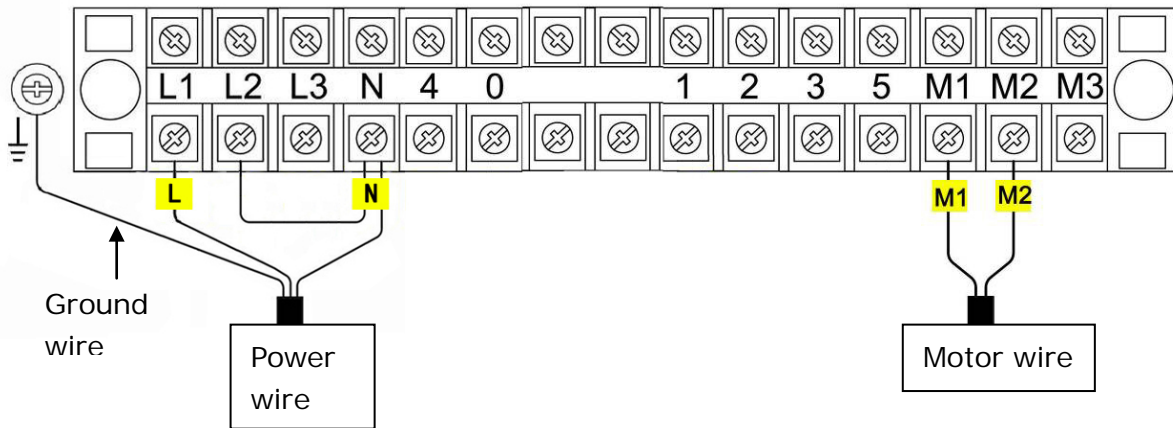


Fig.7

2.2 Schematic circuit diagram(Fig.8)

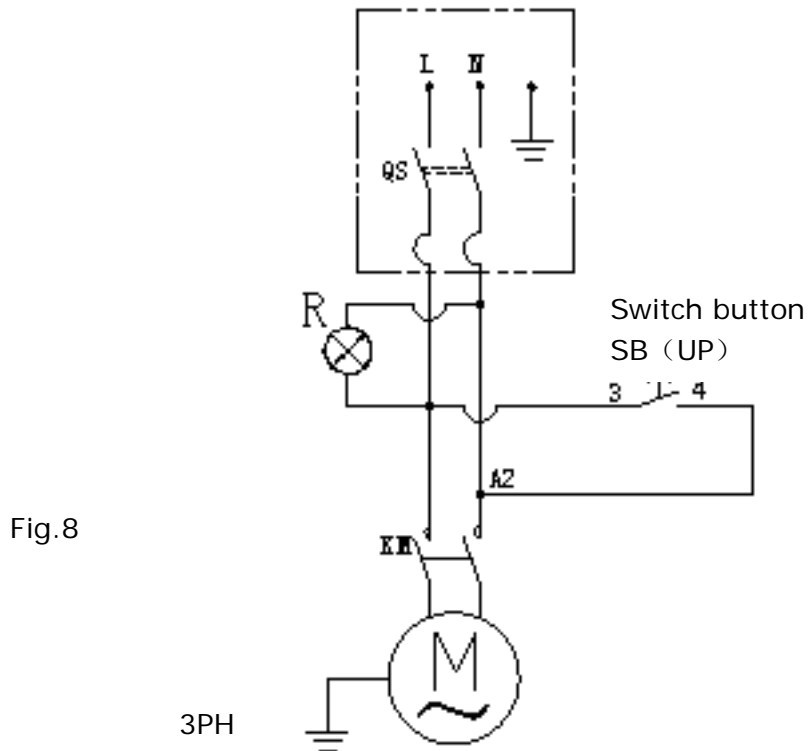


Fig.8

D. Fastening all the oil hose fittings, fill the power unit with right amount hydraulic oil (in order to ensure the working life of hydraulic system and the machine reach the best performance, please fill in the no.46 high quality anti-wear hydraulic oil.)

E. Install adjustable fixing device. See Fig 9

1 After connecting the wire, lift the motorcycle lift to a suitable height, install the adjustable fixing device according to below photo;

2 The adjustable fixing device can be chosen to install in different installed position of the platform.

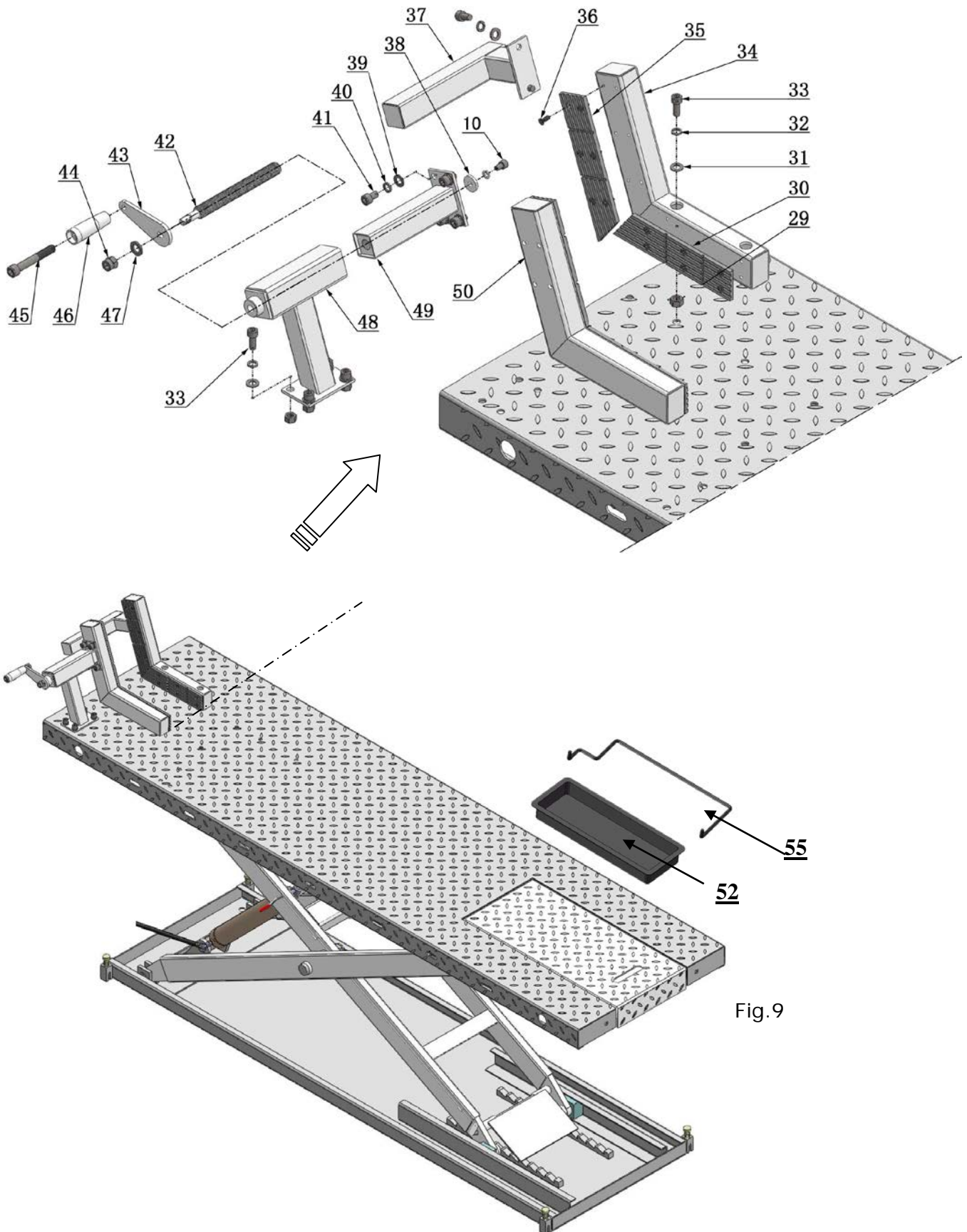


Fig.9

F. Install width extension kit (optional). See Fig 10

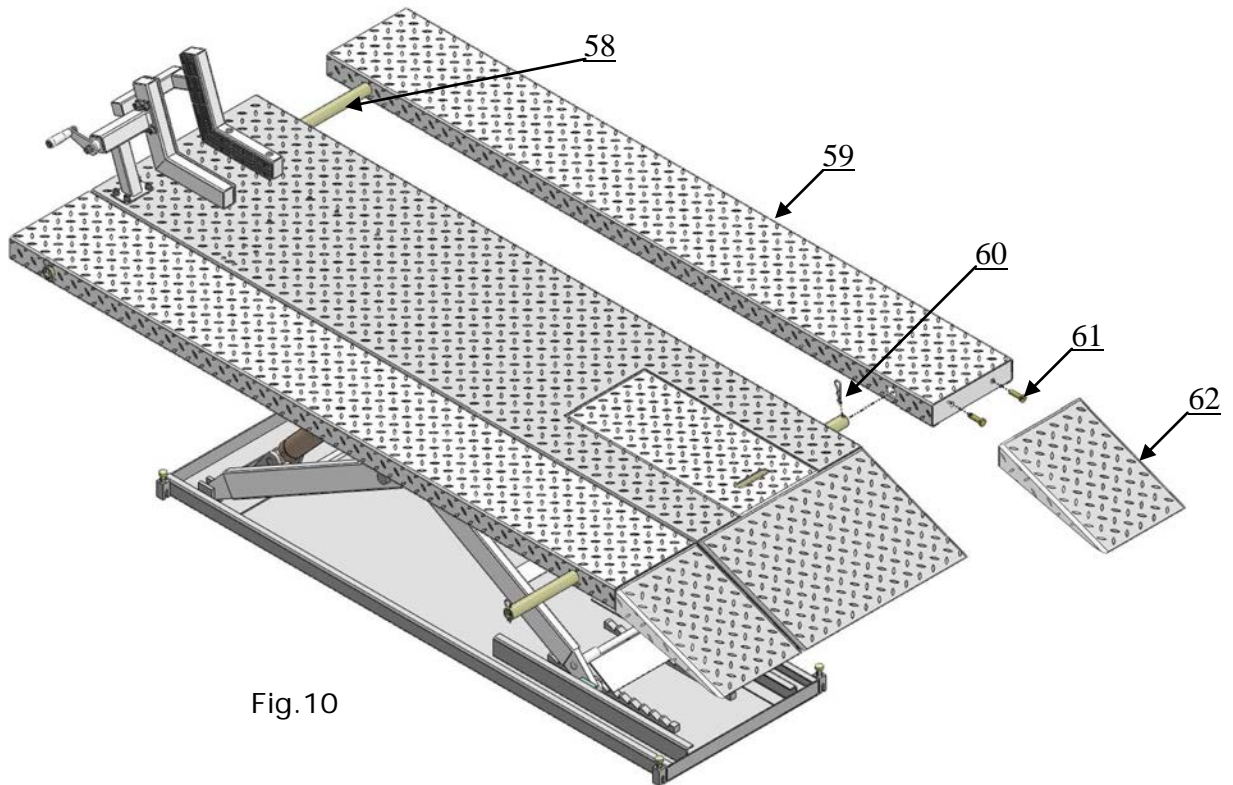


Fig.10

G. Install platform extension kit (optional). See Fig 11

Note: Connect the holes on platform extension kit and the platform. Install the adjustable fixing device on the platform extension kit.

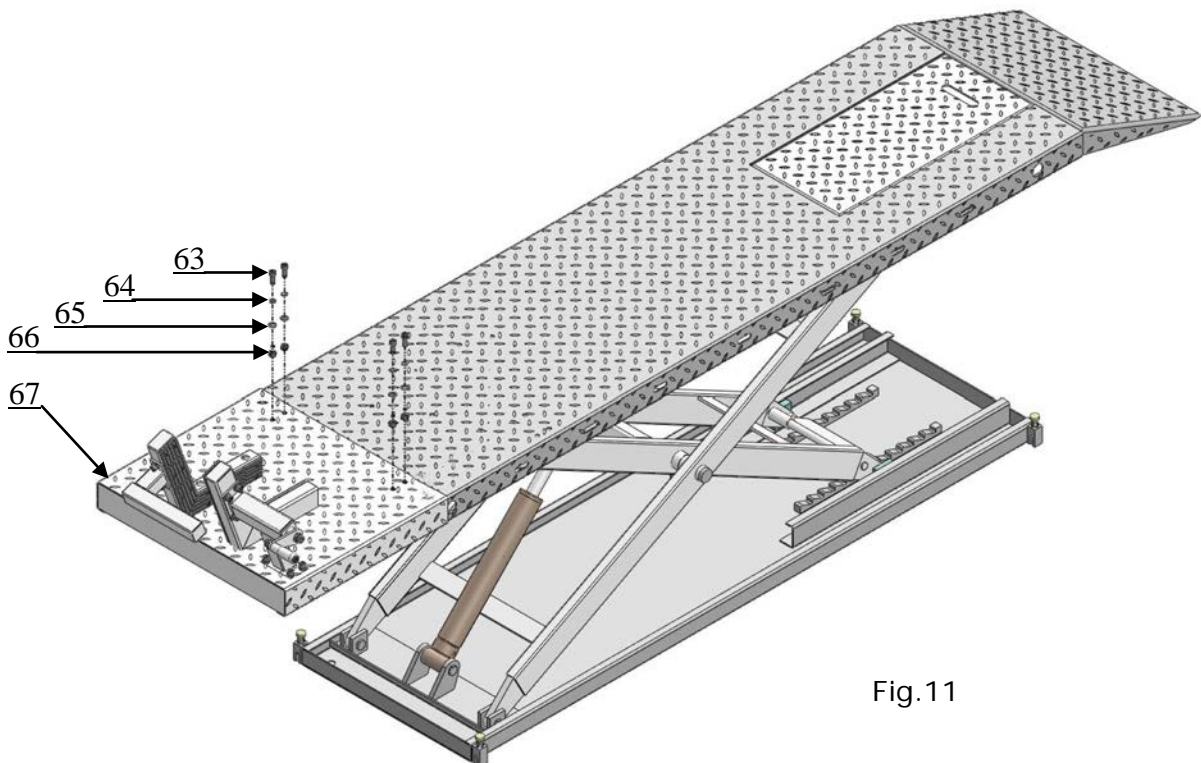


Fig.11

IV. EXPLODED VIEW

MODEL: MC-600 (H)

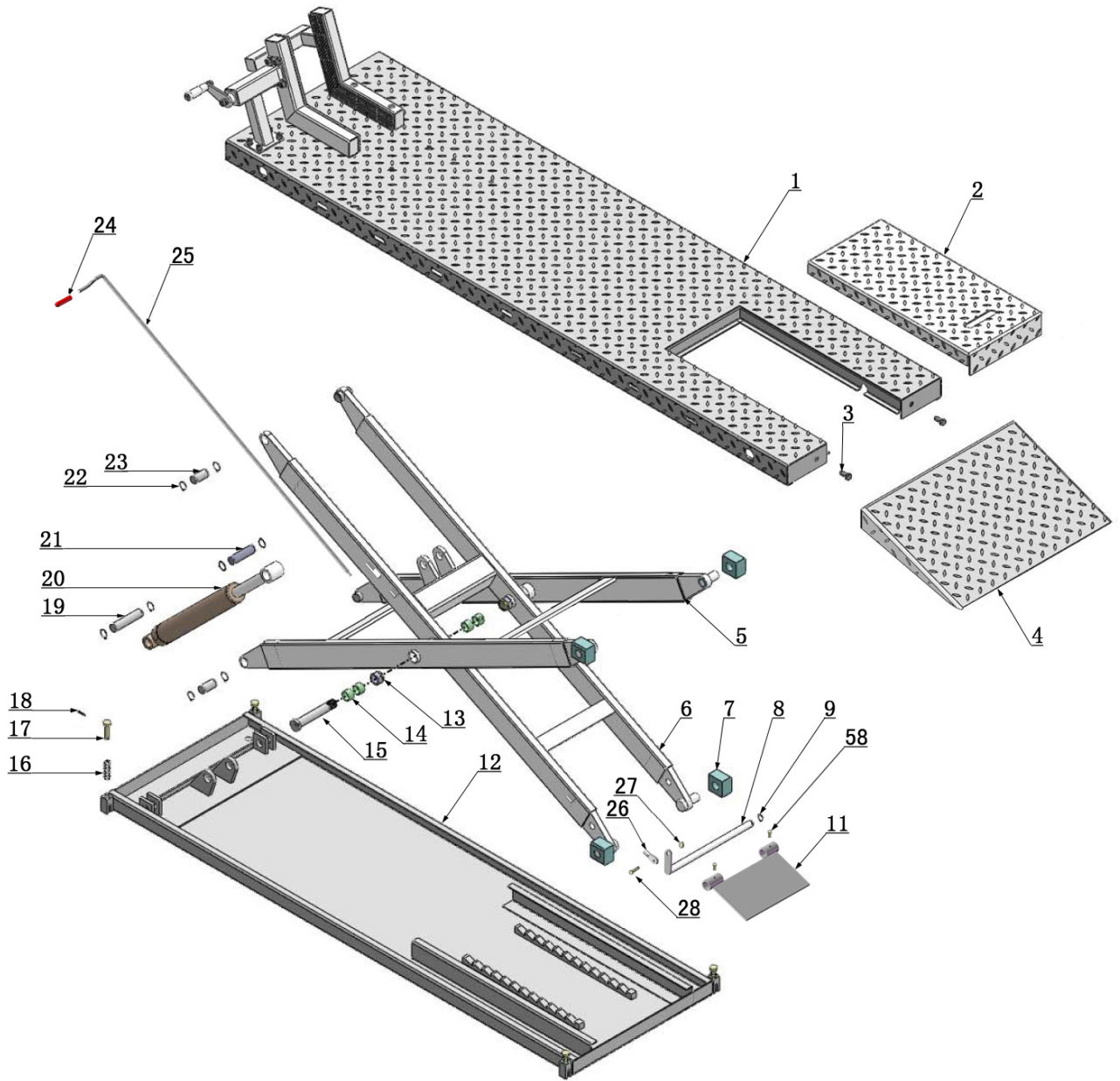


Fig.12

Control Cabinet

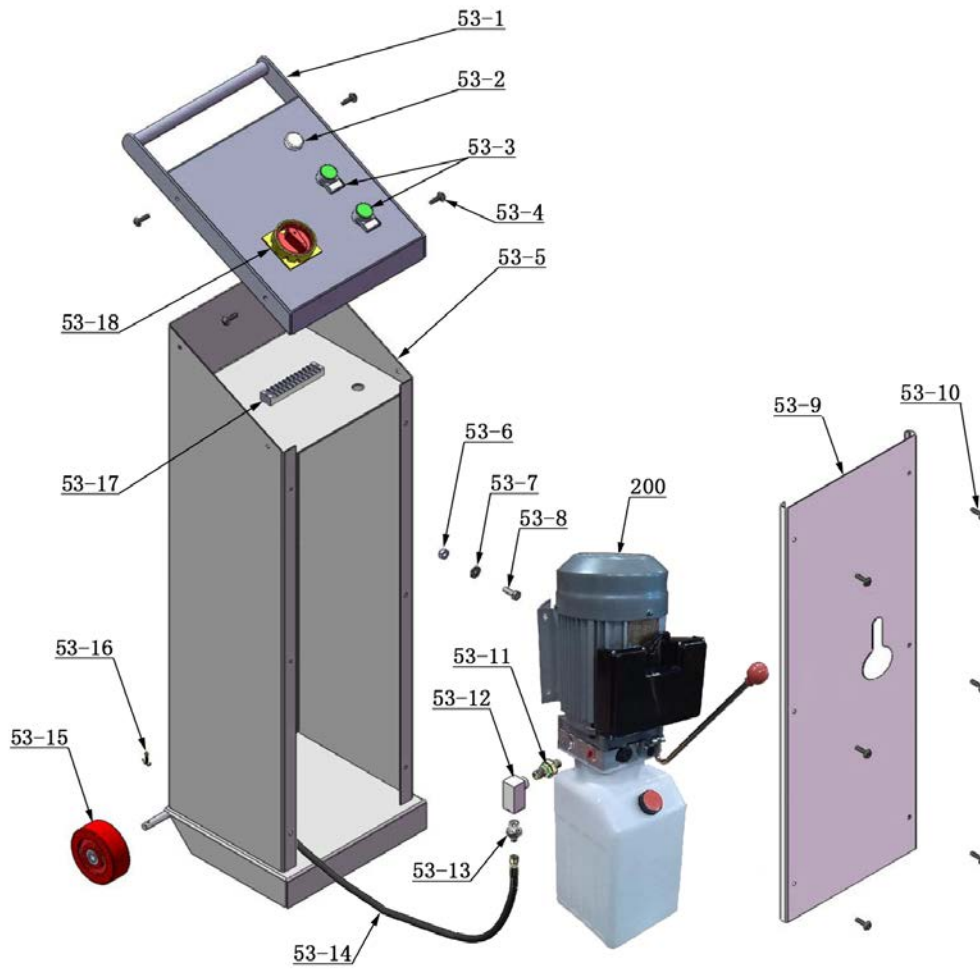


Fig.13

Cylinder

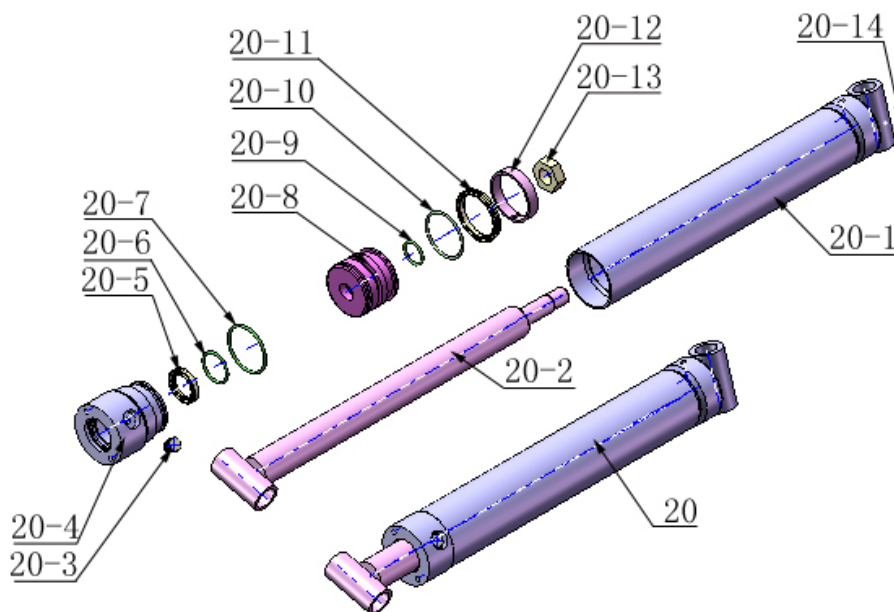


Fig.14

Power unit

**PEAK ELECTRIC POWER UNIT
220V/50HZ/1 phase**

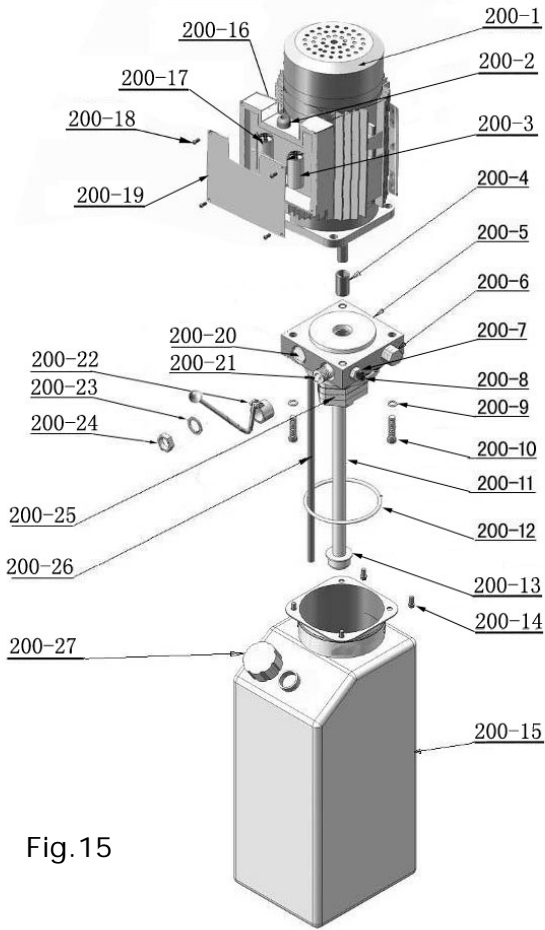


Fig.15

**PEAK ELECTRIC POWER UNIT
380V/50HZ/1 phase**

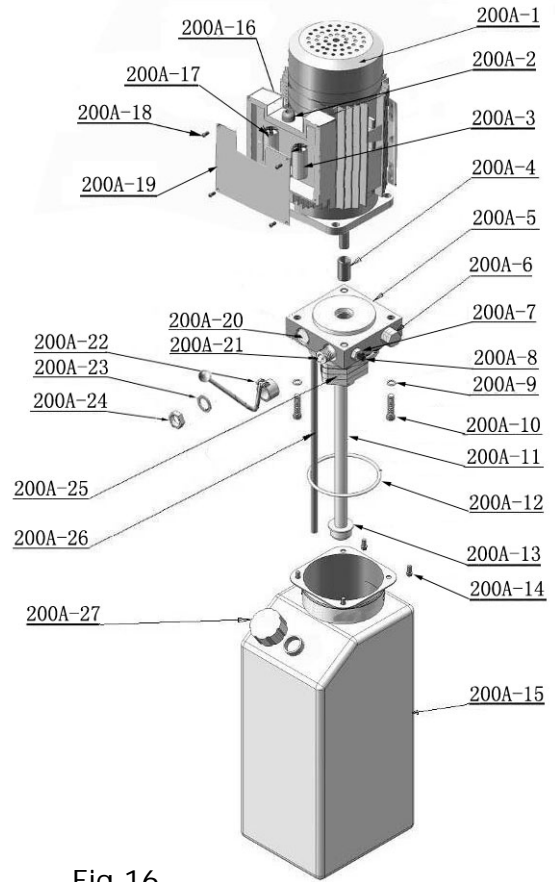


Fig.16

Illustration of hydraulic valve for PEAK electric power unit(220V/50HZ/1 phase)

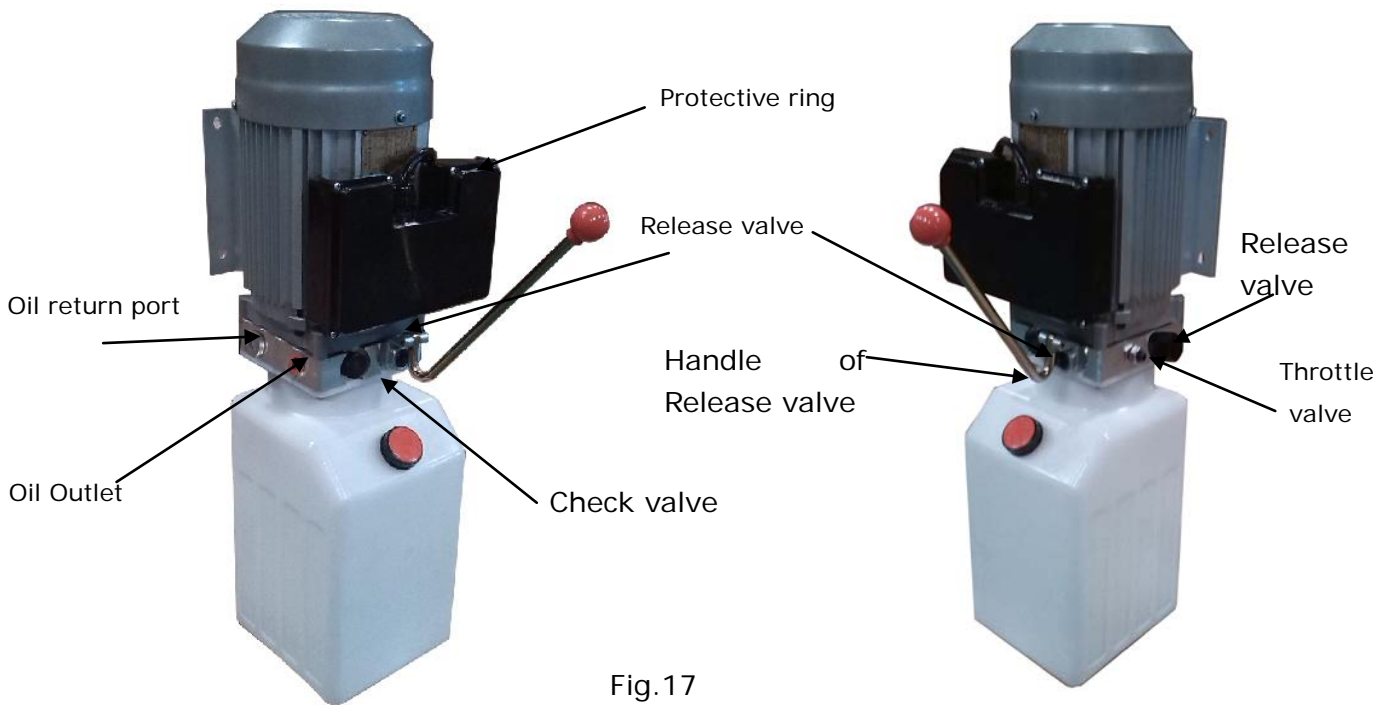


Fig.17

V. TEST RUN

1. Install anchor bolts. see Fig.18

Install the anchor bolts to fix the machine after installing.

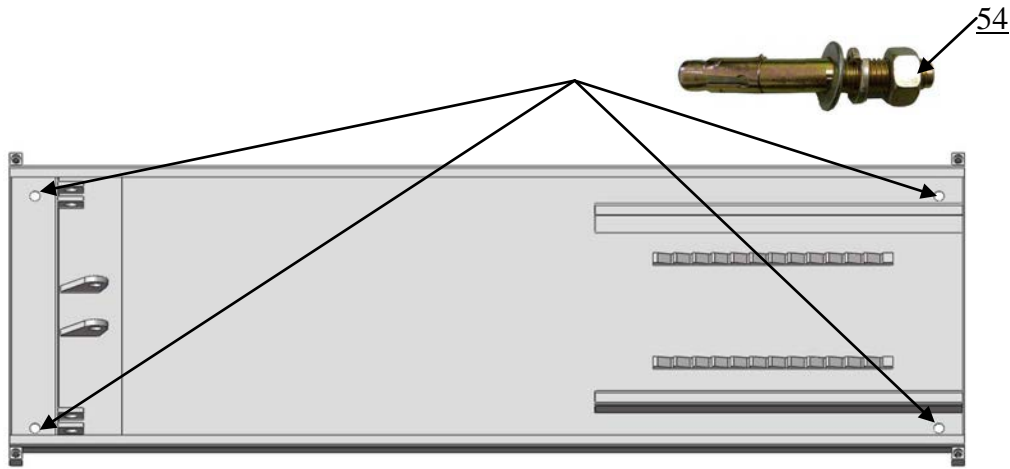
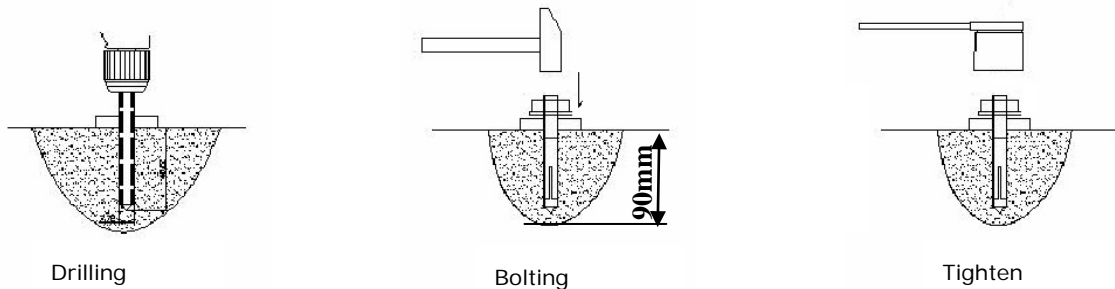


Fig.18

Steps:

Note: Twisting force is 150N.m for fixing the anchor screw , knock the anchor bolt into the ground at least 90mm.



2. Adjust safety cable

Raise the lift to the highest position(See Fig.19), rotating the safety lock handle as the direction of arrow. Loosen the screw of the safety cable by spanner, lift up the safety lock plate from the rack about 15-20mm (See Fig.20), then tighten the safety cable by spanner

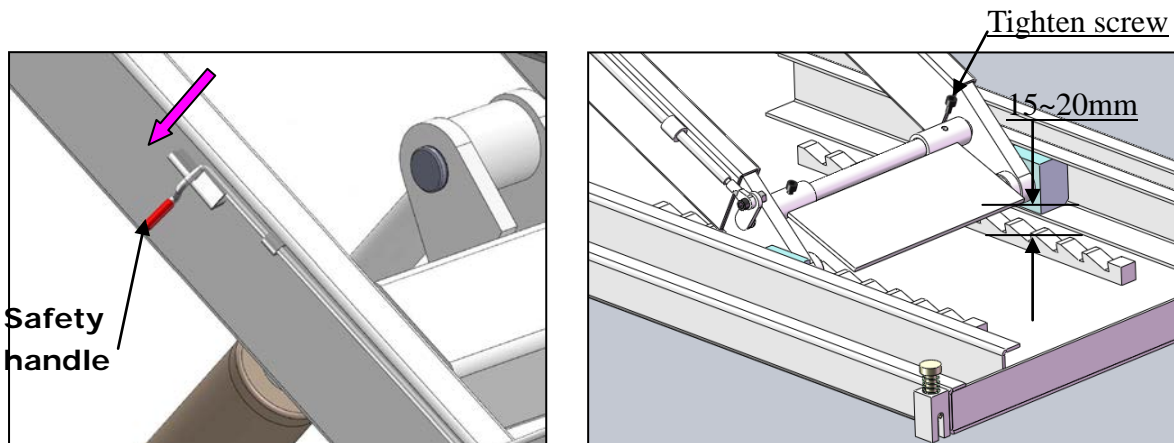


Fig.19

Fig.20

VI. OPERATION INSTRUCTIONS

1. Install well the oil hose between cylinder and power unit, connect well the wire, the motorcycle lift can be used.

2. Raise up the lift without vehicle for testing.

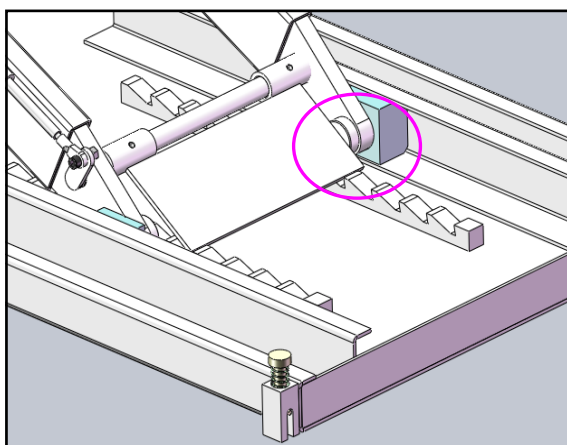
3. To lift vehicle

Lower the lift to the lowest position, loosen the adjustable fixing device. Move the motorcycle to the platform, put the wheel in the adjustable fixing device, set well the motorcycle. Put up the foot stool of vehicle. Clamp the tire by the rotated handle. Tighten the Tension bandage. Make sure the wheel is tightened and the Tension bandage is fixed before using. See Fig.21.



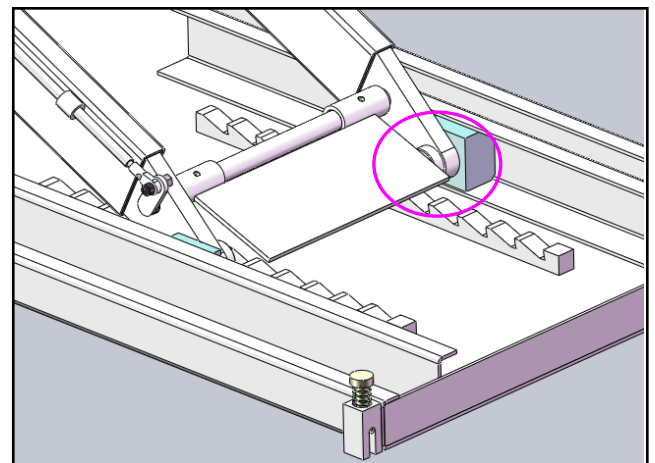
Fig.21

4. **To lower the lift:** Raise the lift for several seconds. Rotate the safety lock handle downward (see Fig.19) to release the safety device.. After the safety device is released(see Fig.23), press the release handle in the power unit, the lift would be lowered.



Safety device is locked

Fig.22



Safety device is released

Fig.23

VII. MAINTENANCE SCHEDULE

Monthly maintenance:

1. Lubricate all moving parts with lubricant. Fig.24

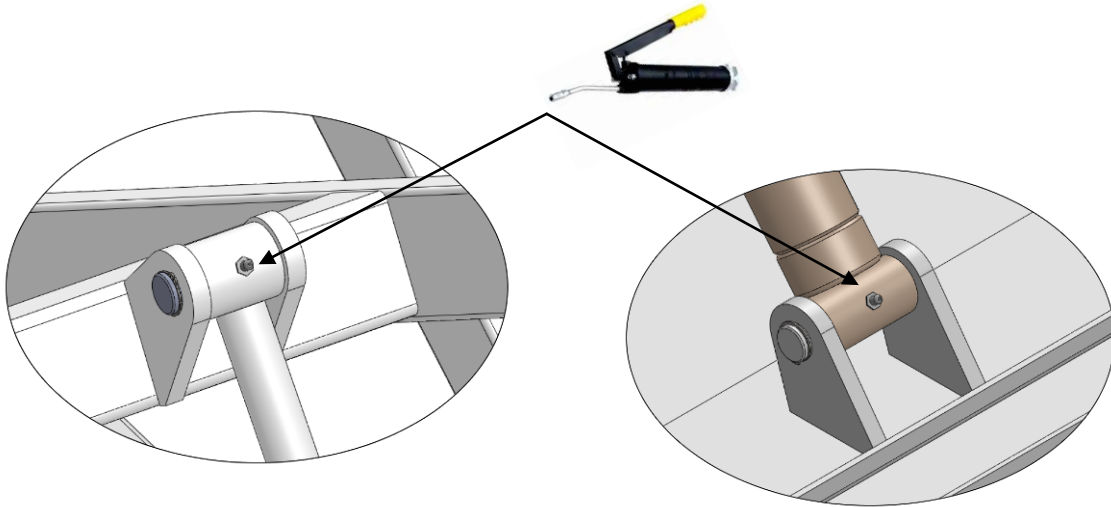


Fig.24

2. Check all connectors, bolts and pins to insure proper mounting.
3. Make a visual inspection of all hydraulic hoses/lines for possible wear or leakage

Every six months:

1. Make a visual inspection of all moving parts for possible wear, interference or damage.
2. Check all fasteners and re-torque

VIII.TROUBLE SHOOTING

NO	TROUBLE	CAUSE	REMEDY
1	Motor does not run	<ol style="list-style-type: none"> 1. Button does not work 2. Wiring connections are not in good condition 3. Motor burned out 4. AC contactor burned out 	<ol style="list-style-type: none"> 1. Replace button 2. Repair all wiring connections 3. Repair or replace motor 4. Replace AC Contactor
2	Motor runs but the lift is not raised	<ol style="list-style-type: none"> 1. Motor runs in reverse rotation 2. Release Valve in damage 3. Gear Pump out of operation 4. Relief Valve or Check Valve in damage 5. Low oil level 6. Overload lifting or low pressure 	<ol style="list-style-type: none"> 1.Reverse two power wire 2. Repair or replace 3. Repair or replace 4. Repair or replace 5. Fill tank 6.Check load or adjust the pressure
3	Lift does not stay up	<ol style="list-style-type: none"> 1. Release Valve out of work 2. Relief Valve or Check Valve leakage 3. Cylinder or Fittings leaks 	<p>Repair or replace</p> <p>Repair or replace</p> <p>Replace fitting and oil seal</p>
4	Lift rises slowly	<ol style="list-style-type: none"> 1. Oil line is jammed 2.Motor running on low voltage 3. Oil mixed with air 4. Gear Pump leaks 5. Overload lifting 	<ol style="list-style-type: none"> 1. Clean the oil line 2. Check Electrical System 3. Fill tank 4. Repair or replace 5. Check load
5	Lift cannot lower	<ol style="list-style-type: none"> 1. Safety device are not in activated 2. Release Valve in damage 3. Oil system is jammed 	<ol style="list-style-type: none"> 1. Release the safety device 2. Repair or replace 3. Clean the oil system

IX. PARTS LIST

Item	Part#	Description	QTY.	Note
1	720118	Platform	1	
2	720021	Cover plate of Platform	1	
3	217069	Hex bolt	2	
4	720123	Drive-in ramp	1	
5	720120	Outer scissor assy.	1	
6	720119	Inner scissor assy.	1	
7	610023	Sliding block	4	
8	720122	Pin for safety device	1	
9	206019	Snap ring	1	
10	720061	Socket bolts	1	
11	720125	Safety device assy.	1	
12	720121	Base assy.	1	
13	620022	Self locking nut	2	
14	203004A	Bronze bush	8	
15	720007	Pin for Scissor	2	
16	720003	Spring	4	
17	720012	Pin for Spring	4	
18	209025	Pin	6	
19	640006A	Cylinder Base Pin ϕ 25	1	
20	640007	Cylinder	1	
21	640057	Pin For Cylinder Connecting	1	
22	206032	Snap ring	12	
23	720009	Connecting pin	4	
24	620136	Pin roll	1	
25	720111	Connecting pin for safety lock	1	
26	720110	Connector bush	1	
27	420018	Self locking nut	1	
28	720102	Socket bolt	1	
29	209021	Hex nut	6	
30	720043	Rubber pad	2	
31	209022	Washer	6	
32	209039	Washer	6	
33	720002	Socket bolt	6	
34	720028	Fixed frame	1	
35	720044	Rubber pad	2	

Item	Part#	Description	QTY.	Note
36	209019	Socket bolt	24	
37	720048	Tire stop tube assy.	1	
38	720045	Washer	1	
39	209033	Washer	6	
40	209034	Lock washer	7	
41	420043	Socket bolt	6	
42	720017	Adjusted shaft	1	
43	720016	Connecting plate for handle	1	
44	206023	Self locking nut	1	
45	720015	Fixed Bolt for operating handle	1	
46	720018	Operating handle	1	
47	206006	Washer	1	
48	720032	Adjustable fixing device	1	
49	720031	Active tube assy.	1	
50	720030	Adjustable frame	1	
51	209064	Straight fitting	1	
52	206156	tool tray	1	
53	720079A	Control cabinet (electric)	1	
54	620071	Anchor bolt	4	
55	720100	tool tray frame	1	
56	720014	Tension bandage	1	
57	720501	Parts box	1	
58	640050	Socket bolt	2	
200	720055	Manual power unit	1	
Optional: Width extension kits				
58	720124	Connecting pin	2	
59	720035	Width extension platform	2	
60	209012	Hair pin	4	
61	217069	Hex bolt	4	
62	720034	Width extension drive-in ramp	2	
Optional: Extension kits				
63	209126	Hex bolt	4	
64	209039	Lock Washer	4	
65	209022	Washer	4	
66	209021	Hex nut	4	
67	720126	Extension platform	1	

Parts for cylinder

Item	Part#	Description	QTY.	Note
20-1	640030A	Bore Weldment	1	
20-2	640031A	Piston Rod	1	
20-3	201034	Bleeding Plug	1	
20-4	201033	Head Cup	1	
20-5	209078	Dust Ring	1	
20-6	201032	O-Ring	1	
20-7	201035	O-Ring	1	
20-8	201028	piston	1	
20-9	206069	O-Ring	1	
20-10	201031	O-Ring	1	
20-11	201030	Y-Ring	1	
20-12	201029	Support Ring	1	
20-13	206071	Nut	1	
20-14	620064	Oil nozzle	2	

Parts for Control cabinet

Item	Part#	Description	QTY.	Note
53-1	720052	Control panel	1	
53-2	61K077	Light (white)	1	
53-3	420071	Button (UP)	2	
53-4	209145A	Cup head bolt	4	
53-5	720053	Cabinet body	1	
53-6	209005	Self locking nut	4	
53-7	209004	Rubber ring	4	
53-8	209003	Hex bolt	4	
53-9	720054	Cabinet seal plate	1	
53-10	720038	Cup head bolt	6	
53-11	440009	Straight fitting for power unit	1	
53-12	720069	Pressure compensation valve assy.	1	
53-13	510023	Straight fitting	1	
53-14	440042	Oil hose	1	
53-15	640023	Roller	2	
53-16	61K104	Split Pin	2	
53-17	420075A	Terminal	1	
53-18	420074	Power switch	1	

Parts for PEAK electric power unit, 220V/60Hz/1 phase

Item	Part#	Description	QTY.	Note
200-1	81400242	Motor	1	
200-2	81400219	Protective ring	1	
200-3	81400220	Run capacitor	1	
200-4	81400221	Motor connecting shaft	1	
200-5	81400243	Valve body	1	
200-6	81400223	Relief valve	1	
200-7	81400231	Tighten nut of Throttle valve	1	
200-8	81400232	Throttle valve	1	
200-9	209149	Washer	4	
200-10	81400148	Socket bolt	4	
200-11	81400224	Inlet pipe	1	
200-12	81400225	O-Ring	1	
200-13	81400226	Filter	1	
200-14	81400145	Socket bolt	4	
200-15	81400227	Reservoir	1	
200-16	81400228	Motor terminal box	4	
200-17	81400229	Start capacitor	1	
200-18	680005	Cup head bolt	1	
200-19	81400230	Cover of Motor terminal box	1	
200-20	81400236	Check Valve	1	
200-21	81400244	Release valve	1	
200-22	720059	Handle for release valve	1	
200-23	81400245	Washer	1	
200-24	81400246	Tighten nut	1	
200-25	81400237	Gear Pump	1	
200-26	81400238	Oil Return Pipe	1	
200-27	81400239	Filter cap	1	

Parts for PEAK electric power unit, 110V/60Hz/3 phase

Item	Part#	Description	QTY.	Note
200A-1	81400247	Motor	1	
200A-2	81400219	Protective ring	1	
200A-3	81400220	Run Capacitor	1	
200A-4	81400221	Motor connecting shaft	1	
200A-5	81400243	Valve body	1	
200A-6	81400223	Relief valve	1	
200A-7	81400231	Tighten nut of Throttle valve	1	
200A-8	81400232	Throttle valve	1	
200A-9	209149	Lock washer	4	
200A-10	81400148	Socket bolt	4	
200A-11	81400224	Inlet pipe	1	
200A-12	81400225	O-Ring	1	
200A-13	81400226	Filter	1	
200A-14	81400145	Socket bolt	4	
200A-15	81400227	Reservoir	1	
200A-16	81400228	Motor terminal box	1	
200A-17	81400229	Start Capacitor	1	
200A-18	680005	Cup head bolt	4	
200A-19	81400230	Cover of motor terminal box	1	
200A-20	81400236	Check valve	1	
200A-21	81400244	Release valve	1	
200A-22	720059	Handle for Release valve	1	
200A-23	81400245	Washer	1	
200A-24	81400246	Tighten nut	1	
200A-25	81400237	Gear Pump	1	
200A-26	81400238	Oil Return Pipe	1	
200A-27	81400239	Filter Cap	1	



No. Of service manual: 72107201

Revised date: 2015/12