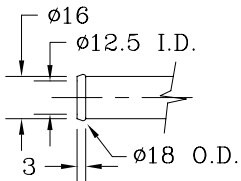
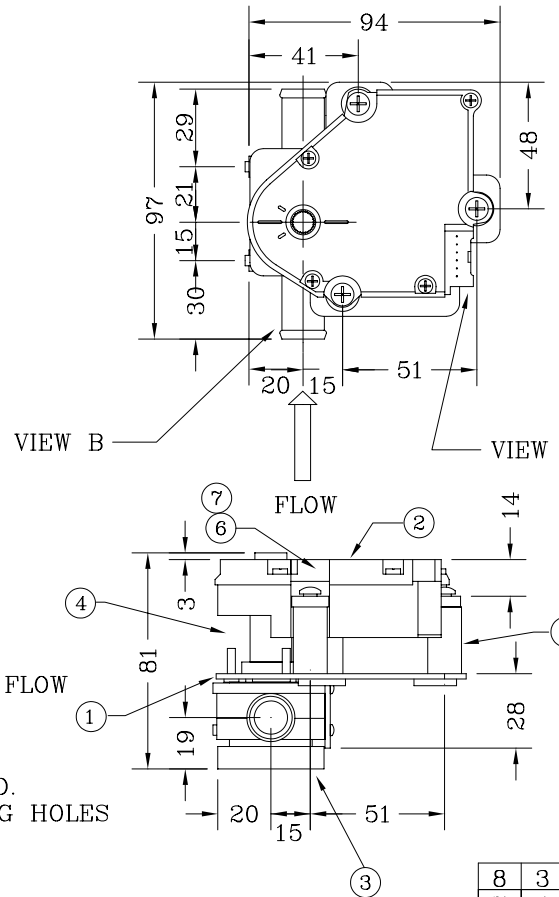
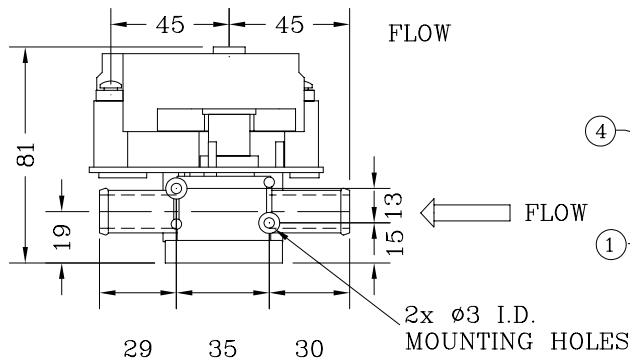
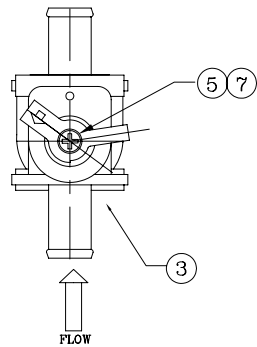


VIEW "A"



VIEW "B"



NOTES:

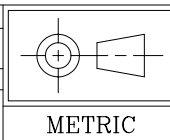
1. MOTOR:
12 VOLTS NOM.
0.5 AMPS MAX.
2. PINOUT:
7-Vs- GND
8-INPUT
10-Vs+ IGN
5-MOTOR±12V, NOT USED - TEST ONLY!
6-MOTOR±12V, NOT USED - TEST ONLY!
9-FEEDBACK POT SIGNAL, NOT USED - TEST ONLY!
- 1 SWAPING POLARITY ACROSS MOTOR CHANGES ROTATION DIRECTION OF VALVE BALL.
- 1 FOR 12V APPLICATIONS USE MCC#25-0885. FOR 24V APPLICATIONS USE MCC#25-1147.
3. TWO MOUNTING HOLES ON SIDE FACE (IN PLASTIC BODY) ARE FOR SELF TAPPING SCREWS
4. USE PLASTITE SCREWS (29-0542) TO MOUNT VALVE TO BRACKET.
5. USE A PLASTITE SCREW (29-0542) & M4 S.S. WASHER TO MOUNT LEVER ARM TO VALVE BODY
6. USE M4x35 S.S. PAN HEAD SCREWS WITH M4 S.S. WASHERS TO COMPLETE THE ASSEMBLY.

8	3	29-0558	7/8" NYLON SPACER
7	4	29-0557	M4 S.S. WASHER
6	3	29-0556	M4x35 S.S. PAN HEAD PHILIPS
5	3	29-0542	4x10mm PLASTITE SCREWS
4	1	29-0484	SHAFT ADAPTOR
3	1	26-1021	HEATER VALVE ASSY.
2	1	25-1113	MOTOR ACTUATOR 12 V
1	1	24-3598	MOUNTING BRACKET

MCC 37

SYM	DESCRIPTION	DATE	BY
2	REVISED PER ECN# 3299	MAY 30/02	OP
1	REVISED PER DCR# 1590	JUN 08/99	JAP
REVISION			

TOLERANCE UNLESS OTHERWISE SPECIFIED									
ANG.	0.5	3	6	30	120	315	1000	2000	OVER 2000
±1°	±0.15	±0.2	±0.5	±0.8	±1.2	±2	±3	±4	±4



CHECK BY:	EW	DATE:	06-06-02	SYM	PCS	PART NO.	DESCRIPTION
							26-0666
							MOTORIZED VALVE ASSY.
							SCALE: NTS BY: JAP
							DATE: MAR 11, 1999
							DWG: P3-7966 REV: 2

