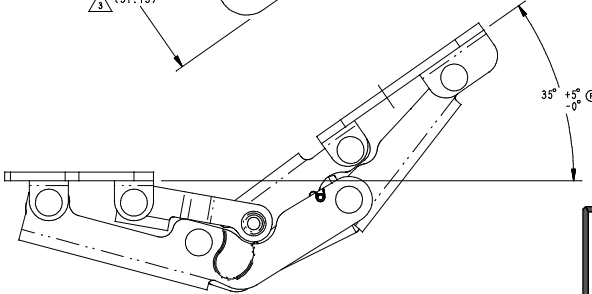
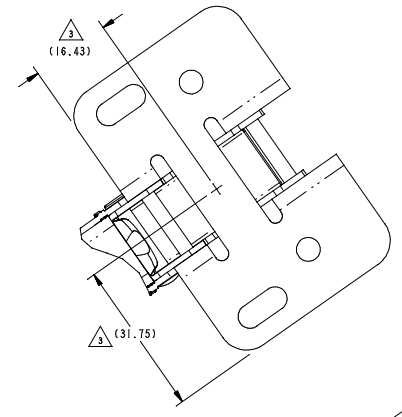
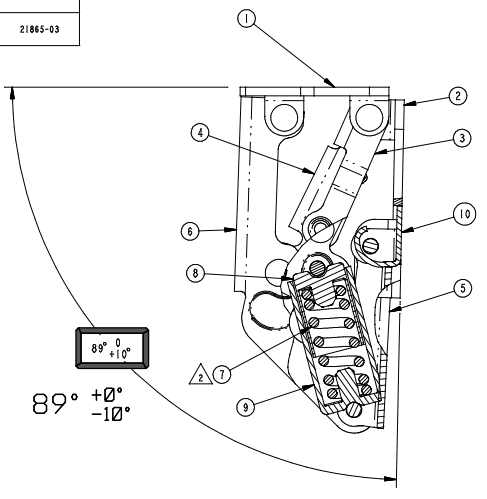
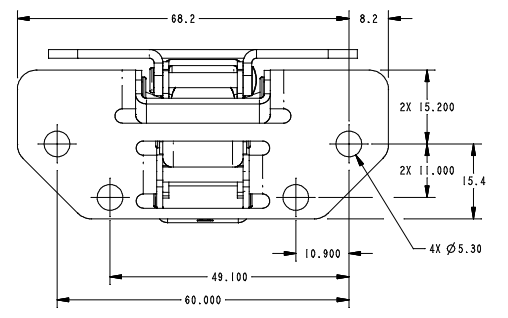
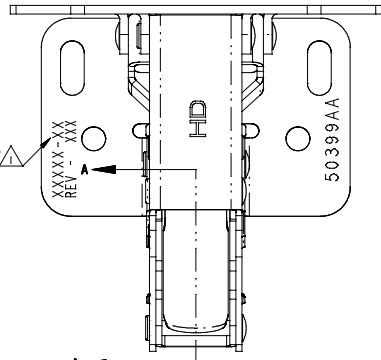
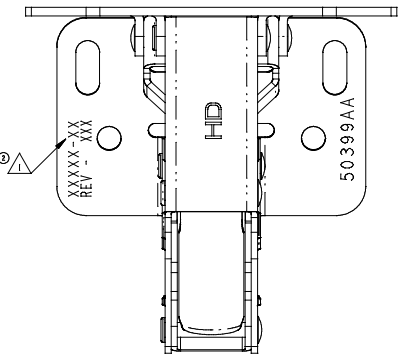
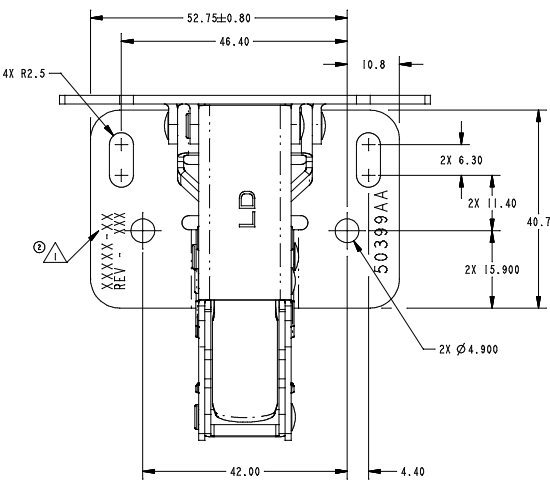


PART NUMBER DESCRIPTION	ITEM 1 BASE (QTY)	ITEM 2 DOOR BRKT (QTY)	ITEM 3 LINK A (QTY)	ITEM 4 LINK B (QTY)	ITEM 5 LINK C (QTY)	ITEM 6 LINK D (QTY)	ITEM 7 SPRING (QTY)	ITEM 8 CYL (QTY)	ITEM 9 CYL (QTY)	ITEM 10 DAMPENER (QTY)	PART MARKING
21865-01 200-0200, HINGE LIGHT DUTY						21861-01 (1)	21864-01 (1)				21865-01
21865-02 200-0200, HINGE HEAVY DUTY	21856-01 (1)	21857-01 (1)	21858-01 (1)	21859-01 (1)	21860-01 (1)	21861-01 (1)	21859-01 (1)	TOP SPR CYL (1)	BTM SPR CYL (1)	N/A	21865-02
21865-03 200-0200, HINGE HEAVY DUTY W/SPRING DAMPENER						21861-02 (1)	21859-01 (1)			DAMPENER (1)	21865-03

REVISION	DATE	BY	DESCRIPTION
0	RLSE	DA	RELEASED FOR PRODUCTION; ADDED PRODUCT CODE; REVISED NOTES; ADDED SECTION A-A AND AUXILIARY VIEW
1	06526	DA	MODIFIED NOTE 4; DELETED NOTE 3 & RE-NUMBERED
2	07324	DA	UPDATED PRODUCT CODE, PART NUMBER DESCRIPTION, PART NUMBER, PART MARK, ADDED NOTE 10, PART MARKING COLUMN.



IN SIGNIFICANT MARKUP
4/28/10 - CJH



21865-01 (LIGHT DUTY)

21865-02 (HEAVY DUTY)

21865-03 (HEAVY DUTY W/SPRING DAMPENER)

- ⊙ NOTES: UNLESS OTHERWISE SPECIFIED:
- ⊙ STAMP PART NUMBER, REV LEVEL AND MANUFACTURED DATE ON THE ASSEMBLY. LOCATE APPROXIMATELY AS SHOWN.
 - ⊙ APPLY ALPHA 2000 OR EQUIVALENT GREASE TO SPRING PRIOR TO INSTALLATION.
 - ⊙ TO BE MEASURED WITH TRIMARK CERTIFIED GAGE OR WHEN MEASURED WITH A LOAD GAGE, HINGE FORCE TO BE THE FOLLOWING:
21865-01 (LIGHT DUTY APPLICATION) TO BE (4±1 LBF) (1.8±.45 KGF).
21865-02 (HEAVY DUTY APPLICATION) TO BE A MINIMUM OF (33 LBF) (15 KGF).
21865-03 (HEAVY DUTY WITH DAMPENER) TO BE A MINIMUM OF (33 LBF) (15 KGF). FORCE MEASURED APPROXIMATELY AS SHOWN.
 - 4. RIVETS, SPRINGS AND SPRINGS CYLINDERS DESIGNED BY SUPPLIER.
 - 5. ASSEMBLY SHALL HAVE NO SHARP EDGES.
 - 6. FINISH TO BE A BLACK, ELECTRO-DISPOSITION COATING, EED-065C/EED-068A
 - 7. COMPONENT DRAWINGS ARE FOR MANUFACTURING AND INSPECTION USE. CURRENT REVISIONS WILL BE STORED AT TRIMARK.
 - 8. TRIMARK'S SUPPLIER BULK PACKAGING TO CONSISTS OF 3 INNER BOXES (40 HINGES PER INNER BOX).
 - 9. HINGES TO BE SHIPPED AND INSTALLED IN THE OPEN POSITION.
 - ⊙ 10. UNDER NORMAL OPERATION, HINGE SHOULD NOT STOP IN BETWEEN OPEN AND CLOSED POSITIONS.

DIMENSIONS	ANGLES
X, Y, Z ± .250	° ± 1°
X, Y, Z ± .50	
X, Y, Z ± .250	

INDICATES REQUIRED ASSEMBLY INFORMATION. US: THE -00 VERSION SHALL BE THE UNFINISHED VERSION OF PART SHOWN.		TriMark 500 Bayview Avenue P.O. Box 305 New Haven, Conn 06459 U.S.A. Tel: 41-384-2388 Fax: 41-384-2392	
UNLESS OTHERWISE SPECIFIED: DATE: 11/10/11	DRAWN BY: DA 8/11/05	CHECKED BY: TMS 8/11/05	PRODUCTION CODE: W02 (200-0200)
PART WEIGHT: (113.4 g)	SURFACE AREA: (27289.1 mm²)	SCALE: 2:0	PART NUMBER: 21865

DIMENSIONS: X, Y, Z ± .250; X, Y, Z ± .50; X, Y, Z ± .250
 ANGLES: ° ± 1°
 TO REF: SCALE: 2:0
 SEE TABLE

CUSTOMER CONTROLLED REQUIREMENTS

METRIC