

User Guide

Portablebox

ENGLISH

GERMAN

FRENCH

SPANISH

ITALIAN



B01-0001-0022

Mode 2 EV Charging Cable (Portable EV charger)



TYPE 1 (SAE J1772 North American standard)

Chevrolet Volt, Citroen C-Zero, Fisker Karma, Ford Focus Electric, Ford C-Max Energi, Mia, Mia Electric Van, Mitsubishi-I Miev, Mitsubishi Outlander Phev, Nissan NV200 SE Van, Nissan Leaf, Peugeot Ion, Renault Fluence, Renault Kangoo, Smiths Edison Van, Smiths Newton, Tata Indica Vista EV, Toyota Prius, Vauxhall Ampera...



TYPE 2 (IEC 62196-2 EU European standard)

Audi A3 e-Tron, BMW i3, BMW i8, Chevrolet Spark, Mercedes B Class E-Celi, Mercedes S500 PHEV, Mercedes SLS EV, Mercedes Vito E-Cell Van, Porsche Panamera S PHEV, Renault Zoe, Renault Zoe 2013, Volkswagen e-Up, Volkswagen e-Golf, Volvo V60 PHEV...

Good to know

1. This is a Mode 2 EV charging cable only for EVs with Type 1/ Type 2 inlets. Don't use it for EVs with other types of inlet
2. This cable has complicated internal structure. Any questions, please contact our Customer Service Manager at the first time. Please do not take it apart without any professional technical support
3. Don't use it in the water
4. This product is only for EV charging. Please don't use it for any other affair, including hauling, binding and so on

Specification

- | | |
|--|------------------------------|
| 1. Certificate: CE | 2. Protection level: IP66 |
| 3. Operating Current: 6~16Amp | 4. Voltage Range: 230V ± 10% |
| 5. Maximum Power: 3.6KW | 6. Auto Charge Recovery: Yes |
| 7. Current Adjustable: Yes | 8. Warranty: 1 Years |
| 9. LED Lights: Indicates Charging Status | |

Professional Specification

- | | |
|--|---|
| Service Life: > 50000 times | Withstand Voltage: 2000V |
| Insulation Resistance: > 1000M Ω | Inlet cable spec: 3*2.5mm ² |
| Terminal Temperature rise: <50K | Shell Material: ABS |
| Contact Impedance: 0.5m Ω Max | Cable diameter: 12(mm) / 0.47(in) |
| Working Temperature: -25°C ~+ 55°C | Contact Pin: Copper alloy, silver or nickel plating |
| Sealing gasket: rubber or silicon rubber | Vibration Resistance: Meet JDQ 53.3 requirements |

Cautions

1. Only used for EV charging
2. Do not use the charging box if the device is damaged
3. Do not use this device with an extension cord or adapter
4. Please do not open up any part of the device by yourself. Please do not disconnect while the charging box is working
5. Please follow the user manual to use this device

Key Features

High Compatibility: Available for all EVs with Type 1/Type2 inlet, 100% correctly and effectively

IP66: Its unique waterproof design ensures that you can use it at anytime

Safety Assurance: Already passed all tests of CE. All kinds of protective measures are taken to ensure the safety of every user

Quick & Easy Operation: Just connect the plug to the EV's inlet, and the charger will automatically detect the connection status and handshaking protocol, then start charging

Rugged Enclosure: To present top notch quality, we use brand-new design and solidly build high strength ABS plastic. The charger is proved to be able to bear the weight of a car.

Intelligent Chip: Automatically repair minor charging problems while charging. The lights will blink in different ways to indicate different problems to help you know the charging situation right now

Security Protection

Warning and indicator functions

Short-circuit protection

Output overcurrent protection

Input under voltage protection

Over temperature protection

Leakage protection

Input overvoltage protection

Charge status detection

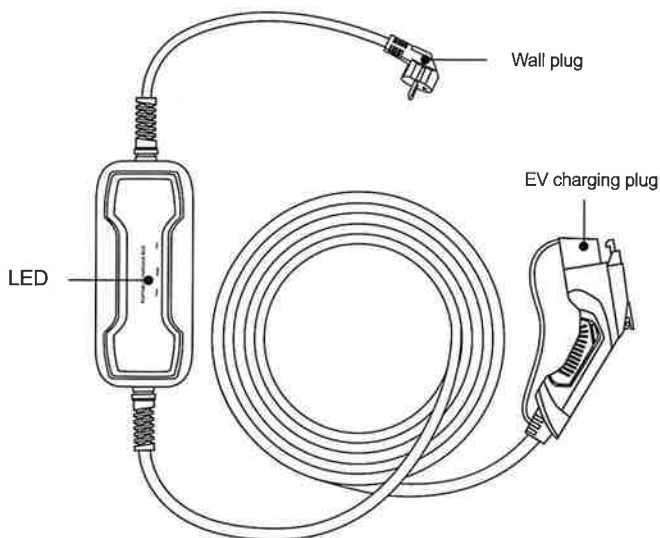
About Maintenance

- In order to ensure the normal service life of the charger and reduce the risk, maintenance must be performed within the specified time; the maintenance of the equipment needs to be completed by professionals, with use of qualified and safe maintenance tools.
- The product is carefully packed in factory. During transportation, strong impact and bumps should be avoided to prevent damage to the outer packaging of the product.
- The product should be placed at an ambient temperature of $-25^{\circ}\text{C}\sim+55^{\circ}\text{C}$ with a relative humidity of less than 95%. The ambient air should not contain acids, alkalis or other corrosive gases and explosive gases, It also should be away from rain, snow, wind and sand.

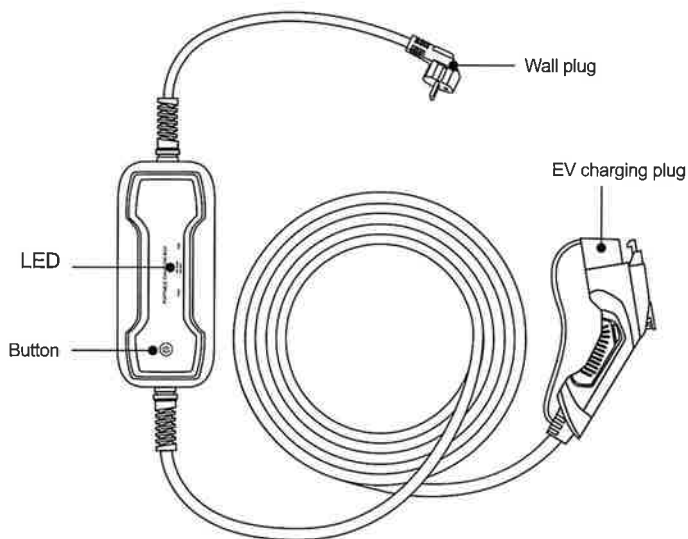
Overhaul

- Mode 2 Charging Cable is subject to stringent quality inspections. From the day of purchase, any quality problems during using the equipment correctly within a year can be reflected to the dealer for the after-sales service.
- Any incorrectness to handle, install, misuse, repair or neglect caused by the user's own inaccuracy or any natural damage resulting in direct damage and failure to the product cannot be covered by the warranty.
- This quality guarantee is only for original buyers.

Non-switchable model



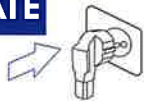
Switchable model



Instruction For Use Non-switchable model

INITIATE

1



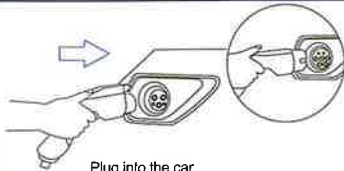
Connect the power cord

2



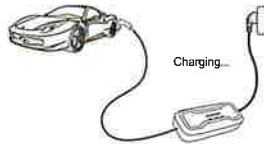
Make sure the indicator works normally

3



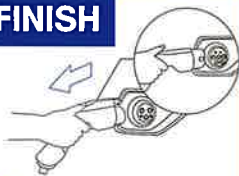
Plug into the car

4



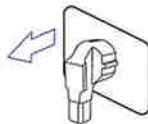
FINISH

1



Plug out

2



Power off

3



Cover the rubber case

LED Display Status

Working Condition

LED Display Status

Power ●

Charge ●

Fault ●

Connected the power



● (0.5s)

● (0.5s)

Ready for charging



Normal charging



● Blink (1s)



Charging fault



Charging completed

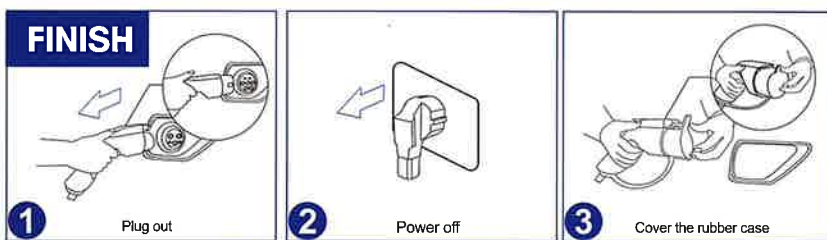
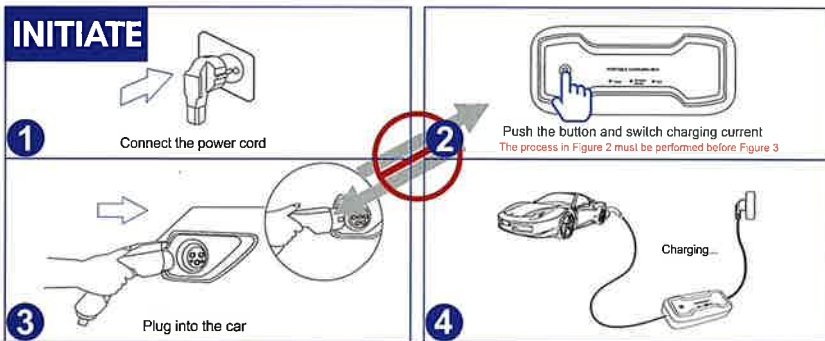


Fault Code Table

Fault Code	Fault Phenomenon	Fault LED Display
1	Communication Fault	Blink 1 Time
2	Under-Voltage Protection	Blink 2 Times
3	Over-Voltage Protection	Blink 3 Times
4	Ungrounded Protection	Blink 4 Times
5	Over- Current Protection	Blink 5 Times
6	Short-Current Protection	Blink 6 Times
7	Leakage Protection	Blink 7 Times
8	Over Temperature Protection	Blink 8 Times

Instruction For Use

Switchable model



LED Display Status

Working Condition	LED Display Status		
	Power ●	10A/Green ● 16A/Blue ●	Fault ●
Connected the power	●	● (0.5s)	● (0.5s)
Ready for charging	●	●	●
Normal charging	●	● Blink (1s)	●
Charging fault	●	●	●
Charging completed	●	●	●

Fault Code Table

Fault Code	Fault Phenomenon	Fault LED Display
1	Communication Fault	Blink 1 Time
2	Under-Voltage Protection	Blink 2 Times
3	Over-Voltage Protection	Blink 3 Times
4	Ungrounded Protection	Blink 4 Times
5	Over- Current Protection	Blink 5 Times
6	Short-Current Protection	Blink 6 Times
7	Leakage Protection	Blink 7 Times
8	Over Temperature Protection	Blink 8 Times

Security Warning

Failure to follow instructions may result in danger!

- ▲ Regularly check whether the portable charger has visible damage, there may be an electric shock hazard when using the damaged product;
- ▲ Make sure that all safety facilities are available at all times and test them regularly to ensure safety;
- ▲ If a 'Ground Error' occurs, it must be assumed that the earth wire carries voltage. Please check the circuit and make sure that there is no high-power available in the whole circuit system.
- ▲ Before powering on the device, please confirm that the device is properly grounded to avoid accidents.
- ▲ All metal parts should be insulated to prevent short circuit caused by the touch of the tool with the metal frame.
- ▲ Do not modify, retrofit, or change any part by yourself under any circumstances.
- ▲ To ensure a stable service life and operation of the charging cable, operation environment should be kept clean and with constant temperature and humidity. The charging cable must not be used in the presence of volatile gas or flammable atmosphere.
- ▲ Please confirm that the input voltage, frequency, circuit breakers and other conditions of the device have already met the specifications before the device is powered on.

MANUFACTURER

Nanjing Shenqi Electronic Technology Co., Ltd.

+86-180-6144-0913 ☎

service-department@evse.com ✉

2nd Floor, Building 4, Minghui Technology Park, No.9
Zhongxing West Road, Lishui District, Nanjing, China