



Arctic Fox LLC—570 South 7th Street—Delano, Minnesota 55328 USA
 Phone: (800) 654-5382 or (763) 972-2758 — Fax: (763) 972-2873 — www.arctic-fox.com

Arctic Fox BV — Strijmaden 7 — 4703 RG — Roosendaal — The Netherlands
 Phone: +31 65 55 92 45 — Fax: +31 65 54 96 40 — www.arctic-fox.eu

In-Line Fuel Warmers Comparison & Components



MIDRANGER™



LINEHAULER™

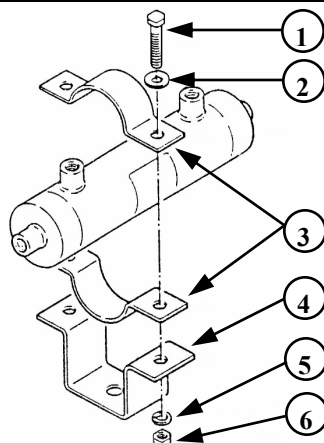
- A Model for Every Application
- Easy Installation
- Maintenance Free
- No Moving Parts
- 100% Stainless Steel Construction
- Optional Coolant Shut-Off Thermostat

In-line fuel warming is a proven, cost effective method of providing protection against stall-outs due to fuel waxing. Obtain the margin of safety you need in moderate cold weather. In extremely cold weather operation, in-line warmers may be combined with in-tank heaters to provide additional protection.

An advantage of in-line fuel warming is the flexibility of mounting locations. Installation is accomplished by simply routing fuel and coolant lines to the unit. Positioning the unit close to the fuel filter, assures maximum fuel warming efficiency and prevention of costly fuel freezing and clogging at the filter.

PART NUMBER	FUEL FLOW GPM/LPM	MOUNTING HARDWARE	CHECK VALVE See (1) Below	SHUT-OFF THERMOSTAT See (2) Below	DUEL FUEL INLET See (3) Below	ELECTRIC PREHEAT See (4) Below	FUEL PORT	COOLANT PORT
I-702	.1-1.5 / .4-1.9	NO	NO	NO	NO	NO	3/8" NPT	3/8" NPT
I-702B	.1-1.5 / .4-1.9	YES	NO	NO	NO	NO	3/8" NPT	3/8" NPT
I-703	.1-1.5 / .4-5.7	NO	NO	NO	NO	NO	3/8" NPT	1/2" NPT
I-703B	.1-1.5 / .4-5.7	YES	NO	NO	NO	NO	3/8" NPT	1/2" NPT
I-703BT	.1-1.5 / .4-5.7	YES	YES	78°-95°F 25°-35°C	NO	NO	1/2" NPT	1/2" NPT
I-703BTEH	.1-1.5 / .4-5.7	YES	YES	78°-95°F 25°-35°C	NO	120 VAC	1/2" NPT	1/2" NPT
I-704B	.1-1.5 / .4-5.7	YES	NO	NO	NO	NO	1/2" NPT	1/2" NPT
I-704BT	.1-1.5 / .4-5.7	YES	NO	78°-95°F 25°-35°C	NO	NO	1/2" NPT	1/2" NPT
I-704BTEH	.1-1.5 / .4-5.7	YES	NO	78°-95°F 25°-35°C	NO	120 VAC	1/2" NPT	1/2" NPT
I-705B	.1-1.5 / .4-5.7	YES	YES	NO	YES	NO	1/2" NPT	1/2" NPT
I-705BT	.1-1.5 / .4-5.7	YES	YES	78°-95°F 25°-35°C	YES	NO	1/2" NPT	1/2" NPT
I-706B	.1-1.5 / .4-5.7	YES	NO	NO	YES	NO	1/2" NPT	1/2" NPT
I-706BT	.1-1.5 / .4-5.7	YES	NO	78°-95°F 25°-35°C	YES	NO	1/2" NPT	1/2" NPT
I-714BT	.1-1.5 / .4-5.7	YES	NO	104°-125°F 40°-51°C	NO	NO	1/2" NPT	1/2" NPT
I-714BTEH-2	.1-1.5 / .4-5.7	YES	NO	104°-125°F 40°-51°C	NO	220/240 VAC	1/2" NPT	1/2" NPT
I-724BT	.1-1.5 / .4-5.7	YES	NO	104°-125°F 40°-51°C	NO	NO	1/2" NPT	1/2" NPT

1. Check valve required when mounting heater above top of fuel tank.
2. Allows automatic fuel temperature sensing and control, required for most electronic engines.
3. Allows for simplified dual draw plumbing when retrofitting single draw to dual draw systems.
4. Includes electric coolant pre-heat. 120 VAC cord set not included see page 11 to order, 220 VAC includes cord set.



IN-LINE BRACKET REPLACEMENT PARTS			
ITEM	QTY.	DESCRIPTION	PART NO.
1	4	3/8" unc x 1.0" Long Bolt	A-321
2	4	3/8" SAE Flat Washer	A-311
3	4	Half Moon Bracket	A-307
4	2	U-Bracket	A-308
5	4	3/8" Split Lock Washer	A-310
6	4	3/8" UNC Hex Nut	A-309



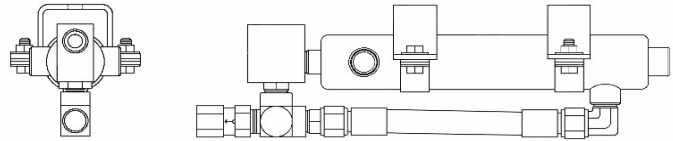
Arctic Fox LLC—570 South 7th Street—Delano, Minnesota 55328 USA
 Phone: (800) 654-5382 or (763) 972-2758 — Fax: (763) 972-2873 — www.arctic-fox.com

Arctic Fox BV — Strijmaden 7 — 4703 RG — Roosendaal — The Netherlands
 Phone: +31 65 55 92 45 — Fax: +31 65 54 96 40 — www.arctic-fox.eu

In-Line Fuel Warmers

Description & Service Parts

LINEHAULER™ - With Electric Pre-Heat



LINEHAULER™ - With Dual Fuel Inlets

I-703BTEH—LINEHAULER FUEL WARMER WITH THERMOSTAT AND ELECTRIC PREHEAT

- Includes fuel check valve and 120 volt electric pre-heat.
- Maximum current draw 1/2 amp.
- Cord set not included—See chart below for selection

I-704BTEH—LINEHAULER FUEL WARMER WITH THERMOSTAT AND ELECTRIC PREHEAT

- Same as I-703BTEH above without the check valve

For fuel flow and heat rise data for both models, see Midranger data on page 12

I-705B—LINEHAULER FUEL WARMER WITH DUAL FUEL INLETS

- Includes check valve to eliminate drain back while changing fuel filter on systems with fuel warmer mounted above top of fuel tank.

I-706B LINEHAULER FUEL WARMER WITH DUAL FUEL INLETS

- Same as I-705B less check valve.

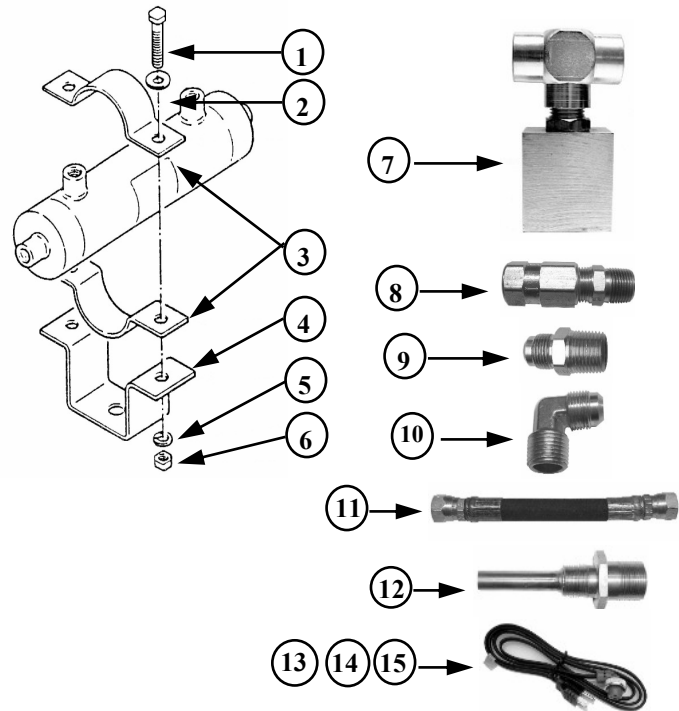
I-705BT—LINEHAULER FUEL WARMER WITH DUAL FUEL INLETS AND THERMOSTAT

- Includes check valve to eliminate drain back while changing fuel filter on systems with fuel warmer mounted above top of fuel tank.
- Automatically controls fuel temperature by stopping coolant flow when fuel temperature through the Tee is approximately 78° to 95° F / 25° to 35° C.

I-706BT—LINEHAULER FUEL WARMER WITH DUAL FUEL INLETS AND THERMOSTAT

- Same as I-705BT less check valve
- For fuel flow and heat rise data for all models, see Linehauler data on page 12

IN-LINE FUEL WARMER REPLACEMENT PARTS



ITEM	QTY.	DESCRIPTION	PART NO.
1	4	3/8" unc x 1.0" Long Bolt	A-321
2	4	3/8" SAE Flat Washer	A-311
3	4	Half Moon Bracket	A-307
4	2	U-Bracket	A-308
5	4	3/8" Split Lock Washer	A-310
6	4	3/8" UNC Hex Nut	A-309
7	1	Thermostat with Tee	S-400T
8	1	Check Valve 1/2" NPT	A-335
9	1	Male Connector #8 x 1/2" NPT	A-287
10	1	Elbow #8 x 1/2" NPT	A-281
11	1	#8 Single Wire Braided Hose	A-703H-8
12	1	63W 120V Heat Element	A-120EK-1
13	1	Power Cord 10' Threaded	EH10
14	1	Power Cord 10' "Y"	EH10Y
15	1	Power Cord 14' "Y"	EH14YK



Arctic Fox LLC—570 South 7th Street—Delano, Minnesota 55328 USA
 Phone: (800) 654-5382 or (763) 972-2758 — Fax: (763) 972-2873 — www.arctic-fox.com

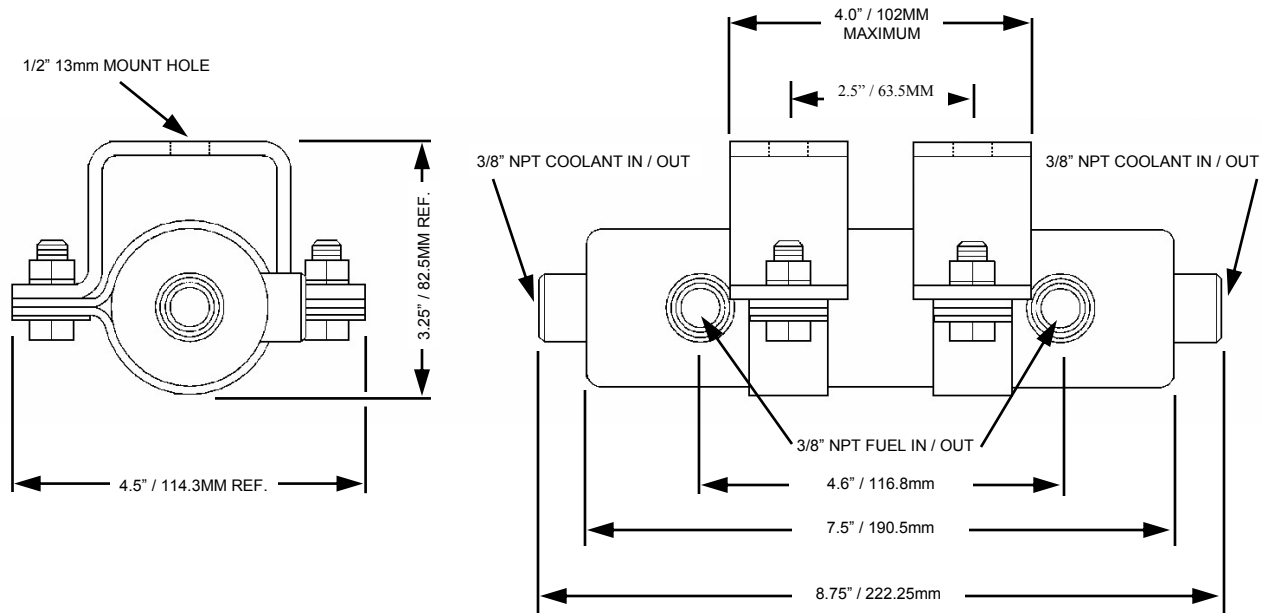
Arctic Fox BV — Strijmaden 7 — 4703 RG — Roosendaal — The Netherlands
 Phone: +31 65 55 92 45 — Fax: +31 65 54 96 40 — www.arctic-fox.eu

In-Line Fuel Warmers

Dimensional & Performance Data

MIDRANGER™ DIMENSIONAL AND HEAT RISE DATA

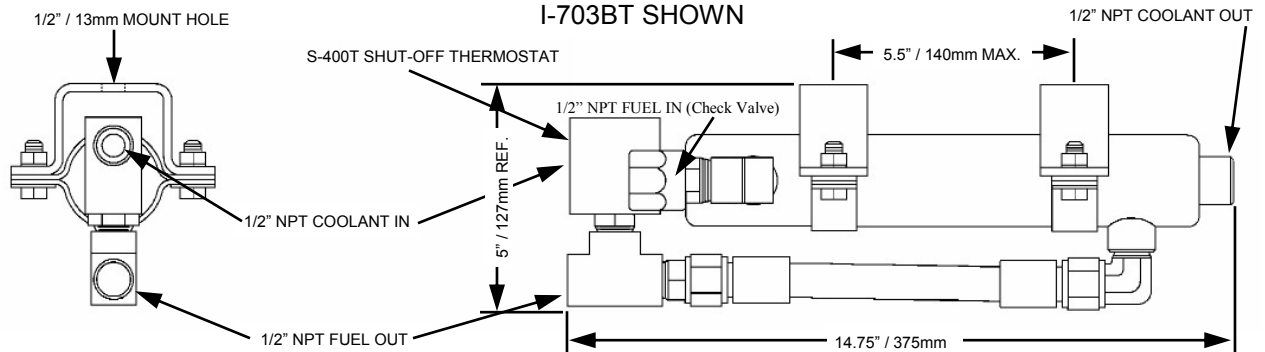
I-702B Shown



FUEL FLOW GPM/LPM	0.1/0.4	.02/0.8	0.3/1.1	0.5/1.9	1.5/5.7	2.5/9.5
FUEL TEMP. IN °F / °C	FUEL TEMP. OUT °F / °C	FUEL TEMP. OUT °F / °C	FUEL TEMP. OUT °F / °C	FUEL TEMP. OUT °F / °C	FUEL TEMP. OUT °F / °C	FUEL TEMP. OUT °F / °C
+10 / -12	+99 / +37	+85 / +29	+75 / +24	+63 / +17	+38 / +3	+33 / +1
-20 / -29	+81 / +27	+66 / +19	+57 / +14	+35 / +2	+13 / -11	+5 / -15
-40 / -40	+71 / +22	+55 / +13	+42 / +6	+19 / -7	-7 / -22	-17 / -27

LINEHAULER™ DIMENSIONAL AND HEAT RISE DATA

I-703BT SHOWN



FUEL FLOW GPM/LPM	0.1/0.4	.02/0.8	0.3/1.1	0.5/1.9	1.5/5.7	2.5/9.5
FUEL TEMP. IN °F / °C	FUEL TEMP. OUT °F / °C	FUEL TEMP. OUT °F / °C	FUEL TEMP. OUT °F / °C	FUEL TEMP. OUT °F / °C	FUEL TEMP. OUT °F / °C	FUEL TEMP. OUT °F / °C
+10 / -12	+112 / +45	+100 / +38	+90 / +32	+72 / +22	+48 / +9	+39 / +4
-20 / -29	+95 / +35	+86 / +30	+78 / +26	+59 / +15	+20 / -6	+10 / -12
-40 / -40	+86 / +30	+74 / +23	+61 / +16	+34 / +1	+2 / -17	-4 / -20