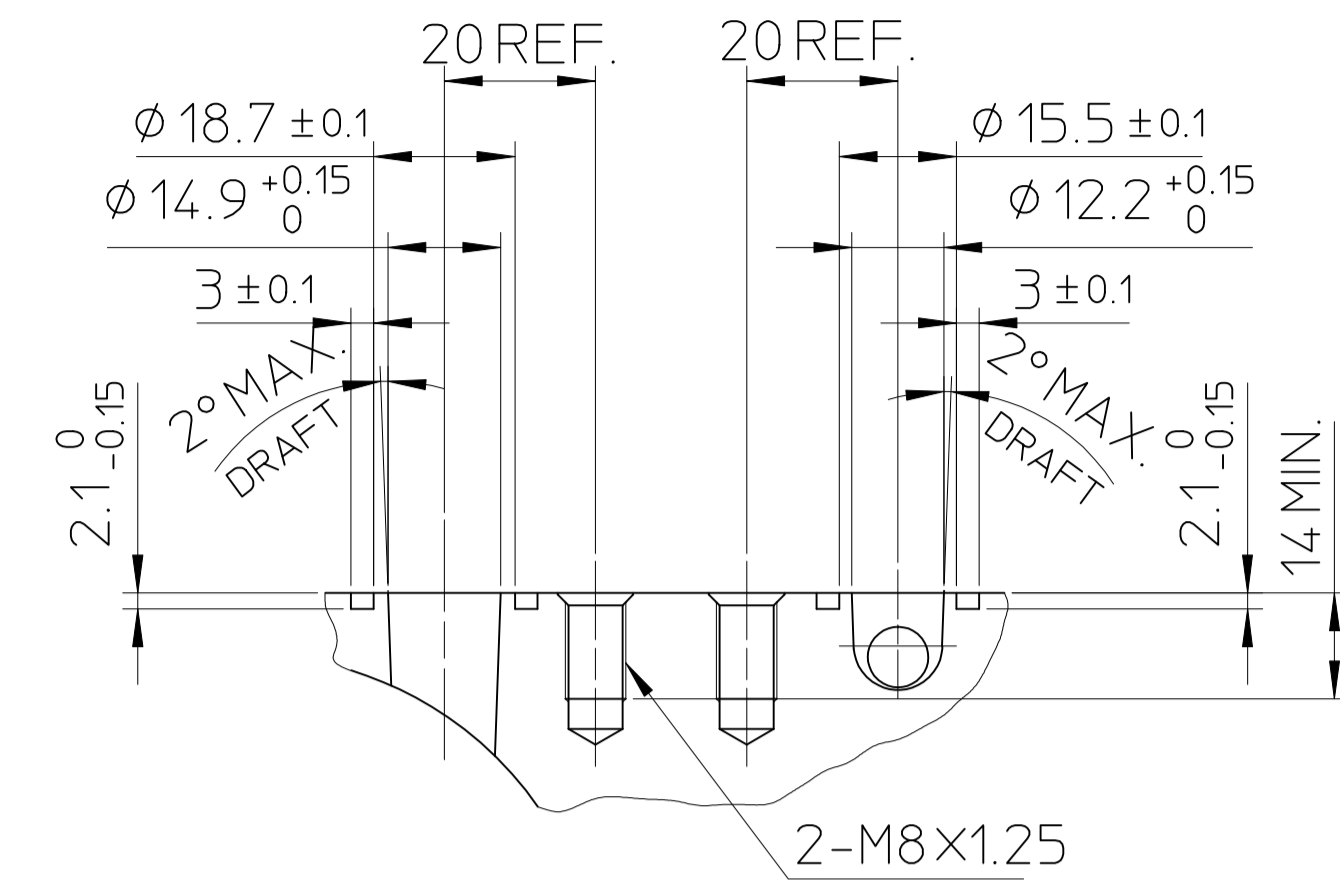
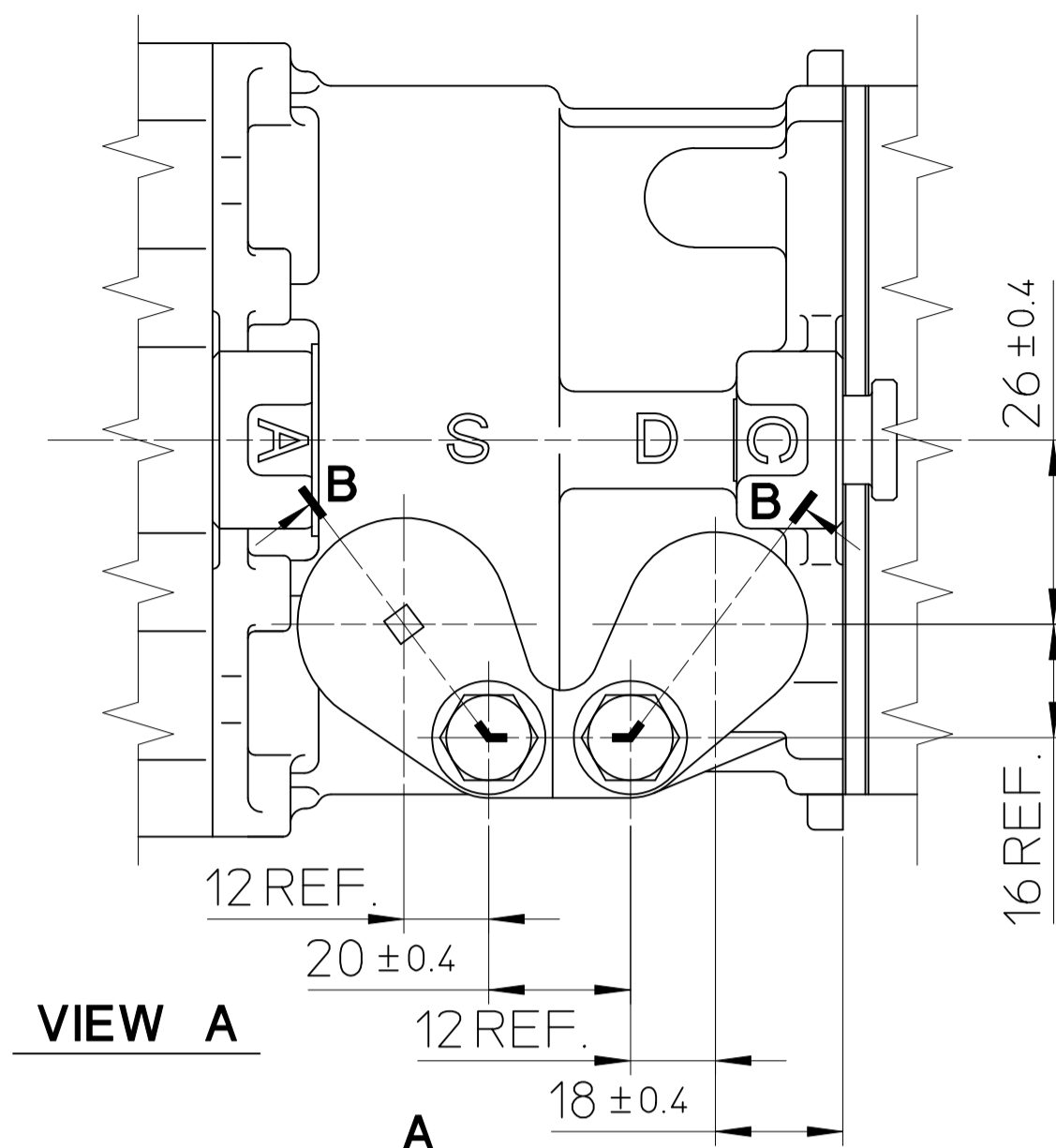
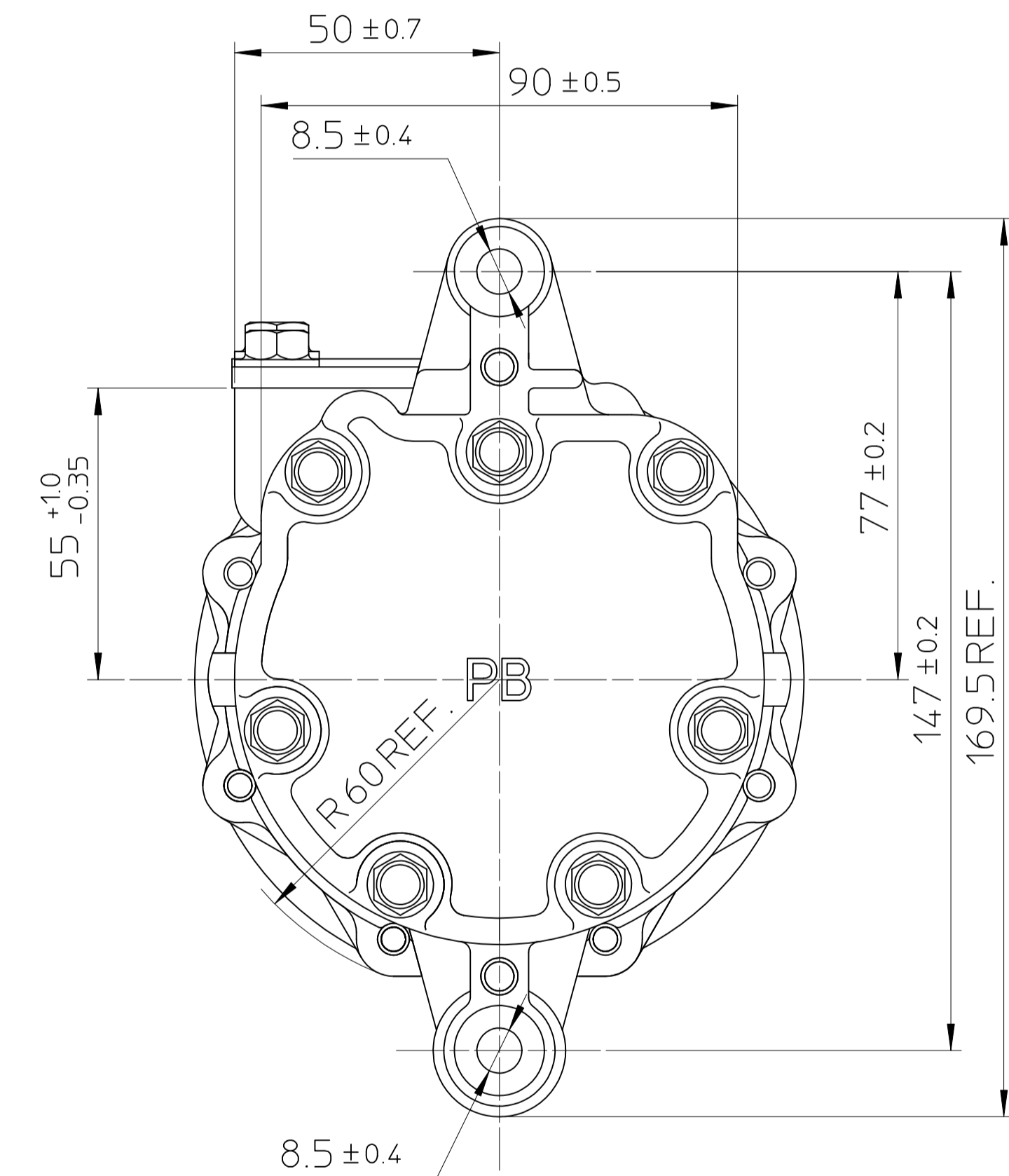
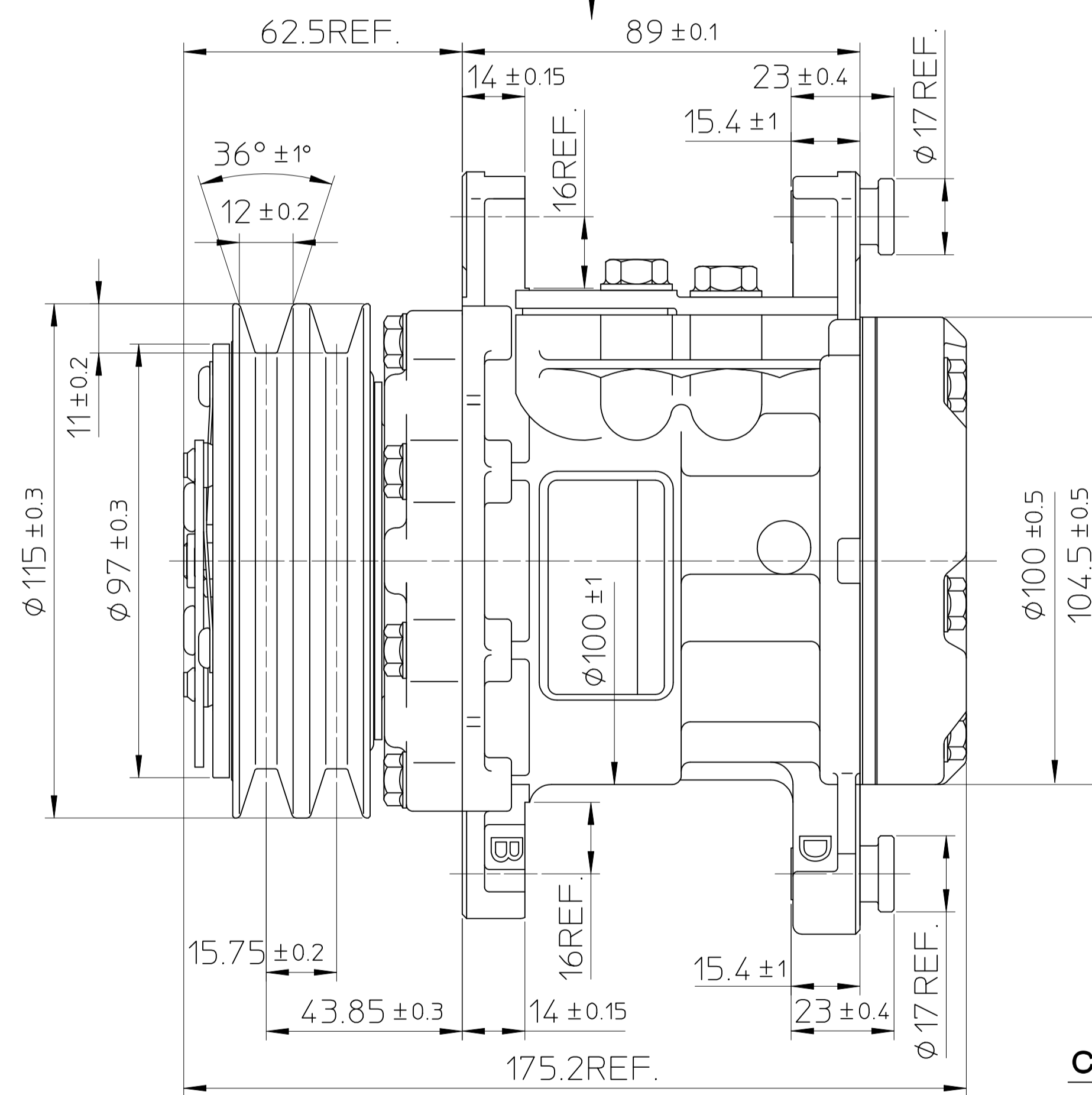


COMPRESSOR SPECIFICATIONS

BORE	∅ 25.4	mm
STROKE	28.1	mm
DISPLACEMENT PER REVOLUTION	99.8	cc/rev.
ROTATION	CLOCKWISE	
NUMBER OF CYLINDERS	7	
MAXIMUM ALLOWABLE r.p.m.	9300	r.p.m.
MAXIMUM ALLOWABLE CONTINUOUS r.p.m.	6500	r.p.m.
REFRIGERANT	R134a	
OIL : PAG	100	cc
WEIGHT		kg



PARTIAL SECT. B-B



CLUTCH SPECIFICATIONS

RATED VOLTAGE	DC 12 V
BREAKAWAY TORQUE	2.35 kg-m
MINIMUM ENGAGEMENT VOLTAGE	7.5 V MAX.
POWER CONSUMPTION	43 W (CU)
MAXIMUM ALLOWABLE r.p.m.	9300 r.p.m.
MAXIMUM ALLOWABLE CONTINUOUS r.p.m.	6500 r.p.m.
BELT TYPE	A TYPE
PULLEY DIAMETER	∅115 mm
WEIGHT	kg

7170

UNCONTROLLED COPY

MATERIAL		PART NO.	7170	NAME	COMPRESSOR
THIRD ANGLE PROJECTION		SCALE	1 : 1	MODEL	SD7B10PB7170
DESIGNED BY	Y.Aoyama	DATE	15. Oct. 1996	DRAWING NO.	7170 - 6000
CHECKED BY	M.Ida	DATE	15. Oct. 1996		
APPROVED BY	H.Akabane	DATE	15. Oct. 1996		
NO.	REVISION RECORD	BY	DATE		