



Product 511660



511660 Passive holder with tilt swivel Padded.

Keep your iPhone in a passive holder on the road and you will always have it within easy sight and reach. Safe, comfortable and convenient! The holder has a neat and discreet design which blends well with the vehicle's interior. The iPhone is held securely in place in an upright position for maximum cellular reception. You can connect e.g. a portable handsfree or a charging cable to the device when it is in place in the holder.

The holder is made of ABS plastic and is padded. This means it has a plush coating which is extra protective for your device. The holder has a perfect fit. It is easy to put the device into the holder, and just as easy to take it with you when leaving the vehicle. The holder fits for iPhone without skin.

The holder is equipped with a tilt swivel so you can adjust the angle of your device in order to avoid light reflection on the screen. You can tilt the holder 22° in each direction. Attach onto ProClip Mounting Platform.

EAN: 7320285116603

Item no 511660 fits:

- Apple iPhone 6 (For all countries)
- Apple iPhone 6S (For all countries)
- Apple iPhone 7 (For all countries)

INSTALLATION INSTRUCTIONS

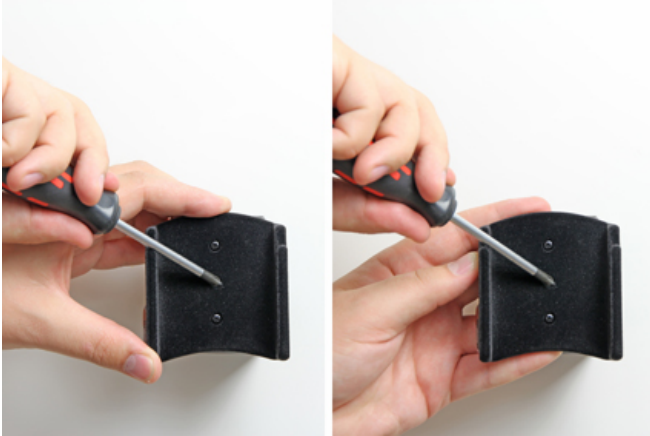
1.



2.



3.



4.



Please read all of the instructions and look at the pictures before attaching the holder.

1. Loosen the screw in the center of the holder so you can remove the tilt swivel attaching plate on the back.

2. Place the attaching plate onto the desired position. Screw the attaching plate into place with the enclosed screws.

3. Place the holder over the attaching plate so the screw fits in the hole in the tilt swivel. Screw a few turns on the screw, just so the thread starts to pull. Pull the holder toward you and hold it slightly tensed, in the same time tighten the screw so the holder is pulled toward the tilt swivel. Tighten the screw firm at first, then loosen it a bit so the holder is firmly in place, but still can be adjusted.

4. The holder is in place.