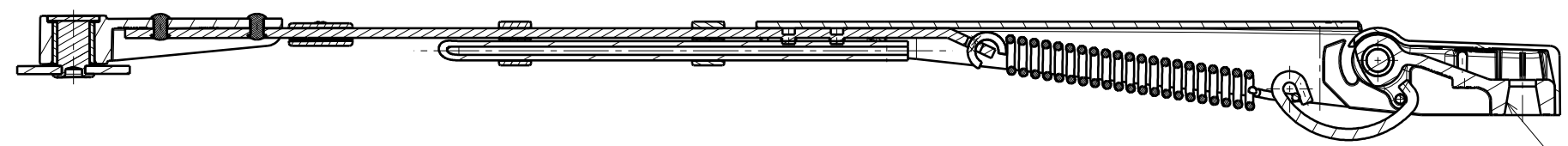


1 2 3 4 5 6 7 8

A A

Section view B-B

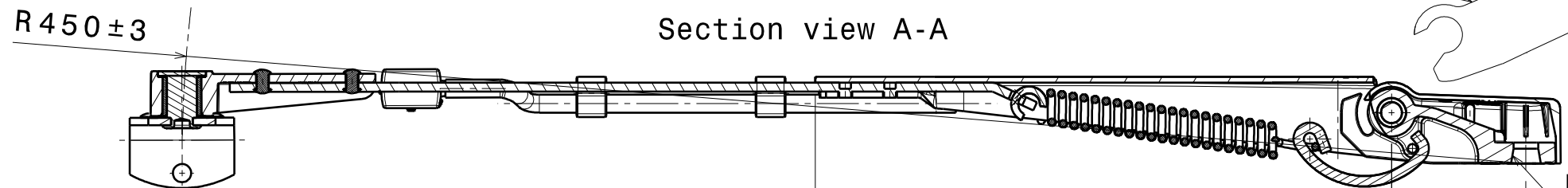


DIN 72783 C12xM8

Removable Cover
Material: PP

B B

Section view A-A



DIN 72783-C10xM8

(193)

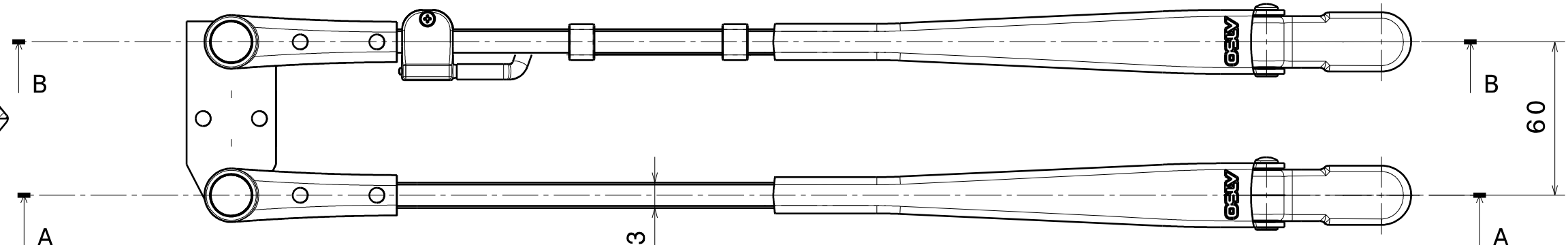
45

C C

F= 14N±10%

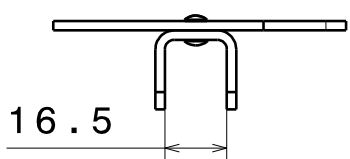
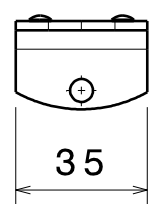
D D

View "X" →



E E

View from "X"


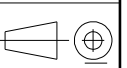


F F

SALT SPRAY TEST ACCORDING TO UNI5687-73
RESISTANCE > 240h.

BLACK PAINTED (Polyester-powder)
RAL9005 GLOSS30

Conforming directive 2002/95/EC (RoHS)

| | | | | | |
|---|-----------|----------------------|--------------------------------------|--|---|
| - | | 731 | 24/01/2017 | Emissione disegno | W.Marsilii |
| REV. | N° C.I.D. | Data / Date | Descrizione / Description | | Disegnato / Drawn |
| Per le quote senza tolleranza fare riferimento alla UNI ISO 2768- mK / For measures without tolerances according to UNI ISO 2768 - mK | | | | | |
|  | | Visto / Approved | Trattamento termico / Heat treatment | Scala / Scale |  |
| Roseto degli Abruzzi - Italy | | D.M.F | - | 1:2 | |
| CAD Generated | | Materiale / Material | | Trattamento superficiale / Surface treatment | Rif.Disegno/Ref.drawing |
| UNI 936 A 3 | | - | | - | Ex 29110506 |
| Denominazione / Part Name | | | | N° DISEGNO / PART NUMBER | |
| BR.PANT.MY07 R450 CAV16 60+LV | | | | 29110521 | |
| <small>Il presente disegno e proprietà della OSLV Italia S.r.l. e senza permesso scritto della stessa non potrà essere comunque utilizzato per la costruzione dell'oggetto rappresentato né venire comunicato a terzi o riprodotto. La società proprietaria tutela i propri diritti a termine di Legge. All proprietary rights reserved by OSLV Italia S.r.l. This drawing shall not be reproduced or in any way utilized to make components and it must not be released to other parties without written consent. The Company asserts one's rights according to the Law.</small> | | | | | |

1 2 3 4 5 6 7 8