



**13 SERIES**  
R65 LED LIGHTBAR

# STANDARD CONFIGURATIONS

Custom Configurations Available

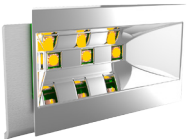
## Introducing the 13 Series R65 LED Lightbar from ECCO



The 13 Series R65 LED Lightbar has been designed with the customer in mind. It offers excellent value in terms of cost, performance and durability utilising the solid state, maintenance free, long life nature of LED technology. This range is robust and compact in the popular housing design. It is available in four standard length options to suit all needs.

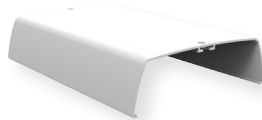
All of our lightbars are designed and manufactured in the UK. The 13 Series is suitable for a variety of vehicles including large vehicles, recovery trucks, fleets and highway maintenance. Custom configurations are also available, Please contact us to discuss your specific requirements.

### Features and Benefits



#### LED Modules

- High-intensity LEDs
- Reflector optic
- 360° R65 Class I light output
- 24, 16 or 12 LED module options
- Available in Amber
- Long life LED technology



#### Lens Options

- Polycarbonate lenses
- Clear & Amber options
- Opal centre sections on request



#### Controller

- Convenient and easy to use
- Controls 8 flash patterns
- Simply plug-n-play
- Easy installation
- Part number **EZ0006**



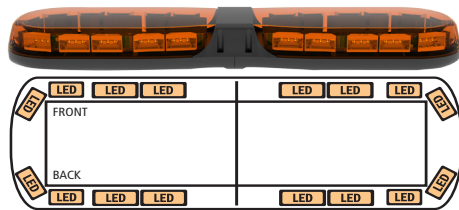
#### Construction

- Polycarbonate base
- Aluminium chassis bar
- Rugged lightweight design
- 770mm, 1000mm, 1250mm & 1500mm length options

### SYMBOL GUIDE

<b>LED</b>	Warning Module
<b>#</b>	Part Number
<b>C</b>	Colour
<b>T</b>	Type
<b>V</b>	Voltage
<b>A</b>	Amps
	Approvals

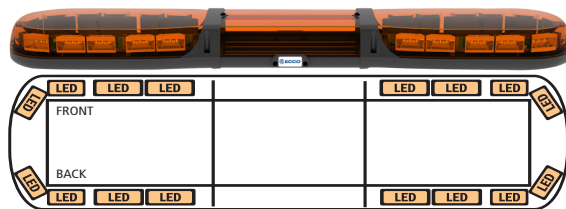
12-24 VDC | ECE R65 Class I | ECE R10 | 2 Year Warranty



770mm

#	13-00001-E*	13-00002-E	13-00009-E	13-00010-E	13-00017-E	13-00018-E
C	Amber	Amber (Clear Lenses)	Amber	Amber (Clear Lenses)	Amber	Amber (Clear Lenses)
T	24 LEDs	24 LEDs	16 LEDs	16 LEDs	12 LEDs	12 LEDs
V	12-24	12-24	12-24	12-24	12-24	12-24
A	5.6	5.6	4	4	3.6	3.6
☑	R10, R65	R10, R65	R10, R65	R10, R65	R10, R65	R10, R65

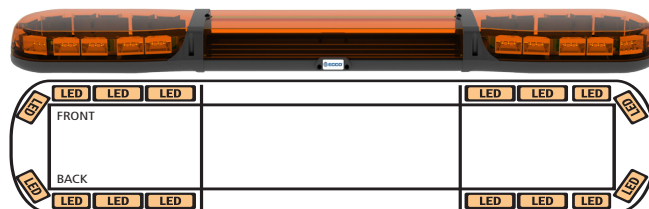
Clear Lens  
Option Available



1000mm

#	13-00003-E*	13-00004-E	13-00011-E	13-00012-E	13-00019-E	13-00020-E
C	Amber	Amber (Clear Lenses)	Amber	Amber (Clear Lenses)	Amber	Amber (Clear Lenses)
T	24 LEDs	24 LEDs	16 LEDs	16 LEDs	12 LEDs	12 LEDs
V	12-24	12-24	12-24	12-24	12-24	12-24
A	5.6	5.6	4	4	3.6	3.6
☑	R10, R65	R10, R65	R10, R65	R10, R65	R10, R65	R10, R65

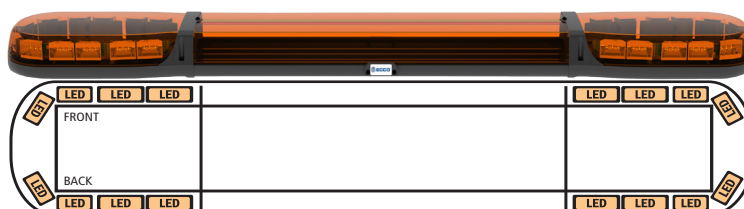
Clear Lens  
Option Available



1250mm

#	13-00005-E*	13-00006-E	13-00013-E	13-00014-E	13-00021-E	13-00022-E
C	Amber	Amber (Clear Lenses)	Amber	Amber (Clear Lenses)	Amber	Amber (Clear Lenses)
T	24 LEDs	24 LEDs	16 LEDs	16 LEDs	12 LEDs	12 LEDs
V	12-24	12-24	12-24	12-24	12-24	12-24
A	5.6	5.6	4	4	3.6	3.6
☑	R10, R65	R10, R65	R10, R65	R10, R65	R10, R65	R10, R65

Clear Lens  
Option Available



1500mm

#	13-00007-E*	13-00008-E	13-00015-E	13-00016-E	13-00023-E	13-00024-E
C	Amber	Amber (Clear Lenses)	Amber	Amber (Clear Lenses)	Amber	Amber (Clear Lenses)
T	24 LEDs	24 LEDs	16 LEDs	16 LEDs	12 LEDs	12 LEDs
V	12-24	12-24	12-24	12-24	12-24	12-24
A	5.6	5.6	4	4	3.6	3.6
☑	R10, R65	R10, R65	R10, R65	R10, R65	R10, R65	R10, R65

Clear Lens  
Option Available

\* 24 LED configurations shown



Maahantuoja:



**KAHA**

Oy Kaha Ab  
Ansatie 2  
01740 Vantaa

[www.kaha.fi](http://www.kaha.fi)  
[teollisuus@kaha.fi](mailto:teollisuus@kaha.fi)  
puh 09 615 6800

Myynti  
puh 09 615 68300  
fax 09 615 68301

Headquarters - EMEA: Unit 1, Green Park, Coal Road, Leeds, LS14 1FB  
+44 (0)113 237 5340 | [sales@eccogroup.com](mailto:sales@eccogroup.com) | [www.eccolink.co.uk](http://www.eccolink.co.uk)

**ECCO SAFETY GROUP™** | [www.eccosafetygroup.com](http://www.eccosafetygroup.com)

MKT006