

050-0100
Two Rotor Latch



This versatile two rotor latch is designed for medium to heavy-duty applications for on or off highway entrance doors, compartments and access panels. It features a variety of trip levers and mounting axles for ease of mounting and applications and is FMVSS 206 (ECE R11) compliant.

DESIGNED FOR:

- Door thicknesses of 1-7/8" (47.6mm) or greater
- Door weights of 50-200 lbs. (23-91 kg)
- Door seal pressures of 50-150 lbs. (23-68 kg) (suggested for best results)
- Use with TriMark 070-0200 Striker Bolt



www.trimarkcorp.com

TriMark Corporation
500 Bailey Avenue
P.O. Box 350
New Hampton, Iowa 50659
United States
Tel: 641-394-3188
Fax: 641-394-2392
1-800-447-0343
www.trimarkcorp.com

TriMark Europe
Cedar Court
Walker Road
Bardon Hill
Coalville LE67 1TU
United Kingdom
Tel: +44(0)1530 512460
Fax: +44(0)1530 512461
www.trimarkeu.com

AVAILABLE:

- In left or right hand configurations (right hand shown)
- With (4) 1/4-20 UNC or M6 X 1 threaded axles
- With trip lever options
- Straddle mount option

MATERIAL:

- Internal latch components: heat treated, smooth edge stamped steel
- Case halves: high strength steel
- Springs: non-corrosive stainless steel

FINISH:

- Zinc plated, clear chromate steel components

INSTALLATION

- (4) 1/4-20 UNC grade 5 or M6 X 1 class 8.8 or better fasteners are required (not included)
- Tighten to the fastener manufacturers' recommended torque value, however, do not exceed 120 in-lbs (13.3 N-m)
- Fastener mounting holes diameter should not exceed .281" (7.1mm)

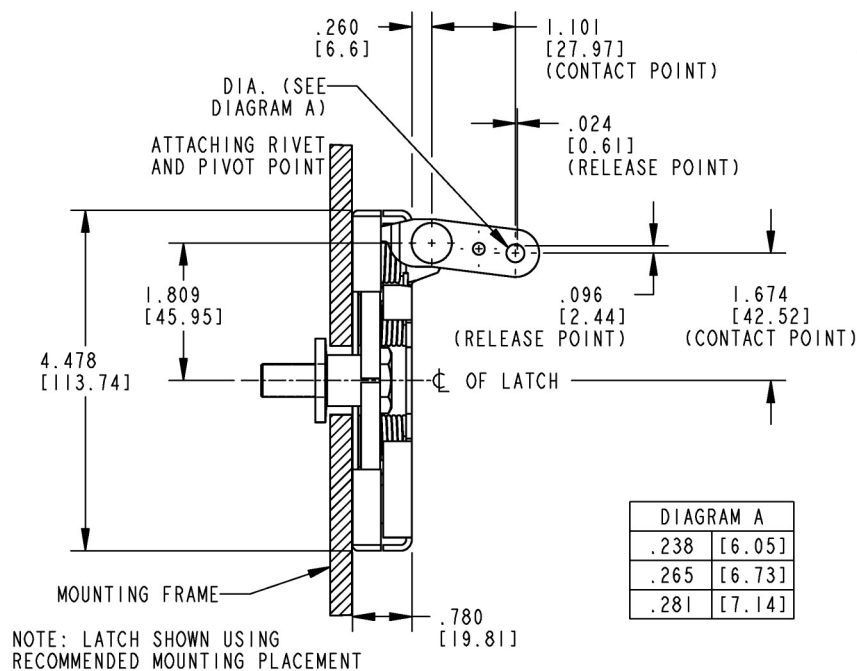
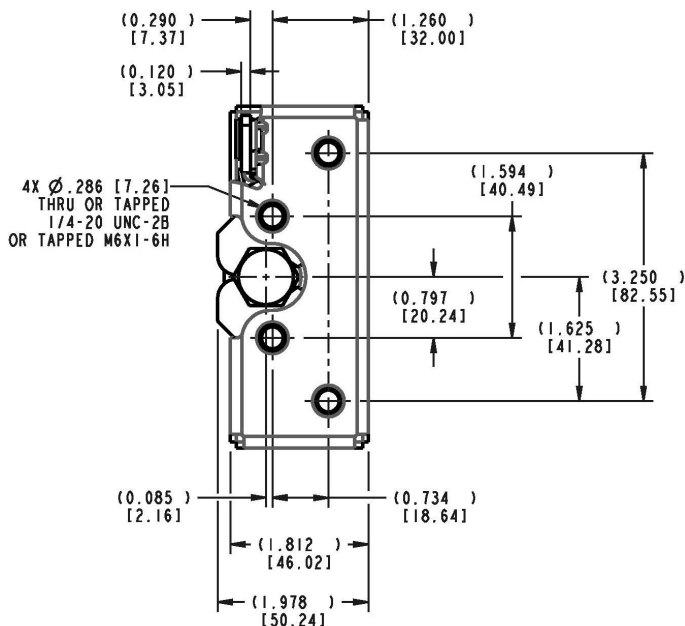
INTERNAL LUBRICATION.

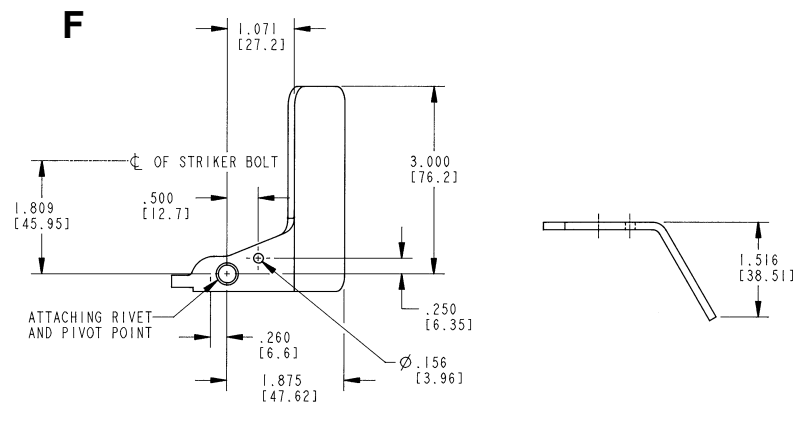
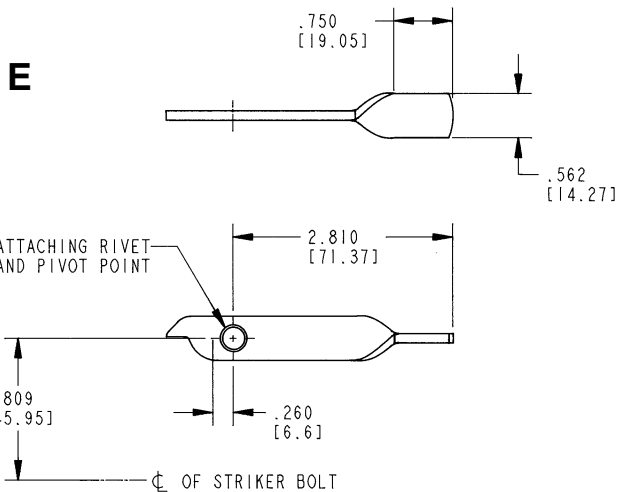
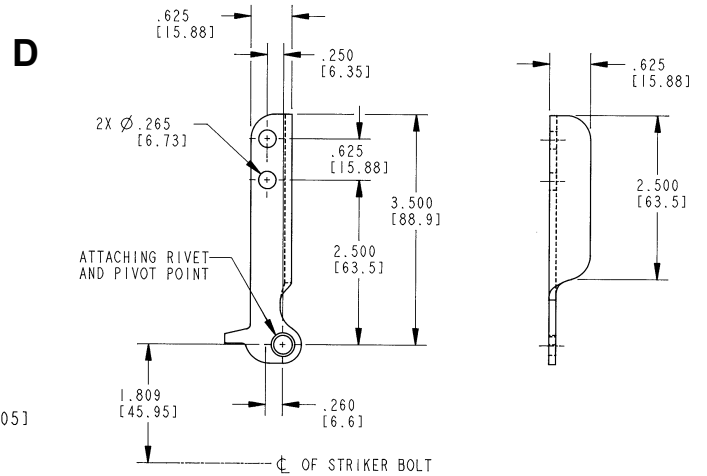
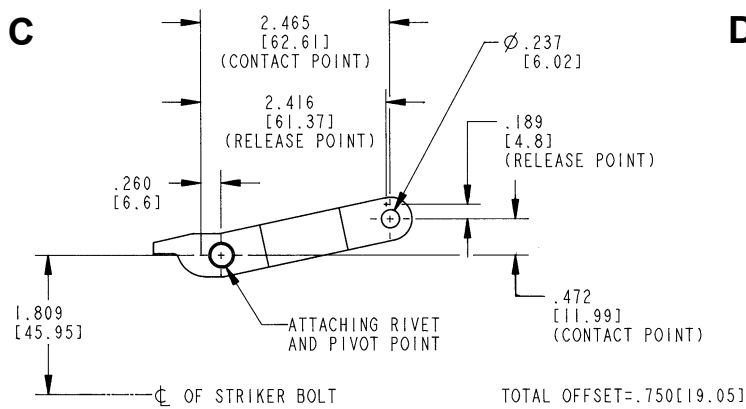
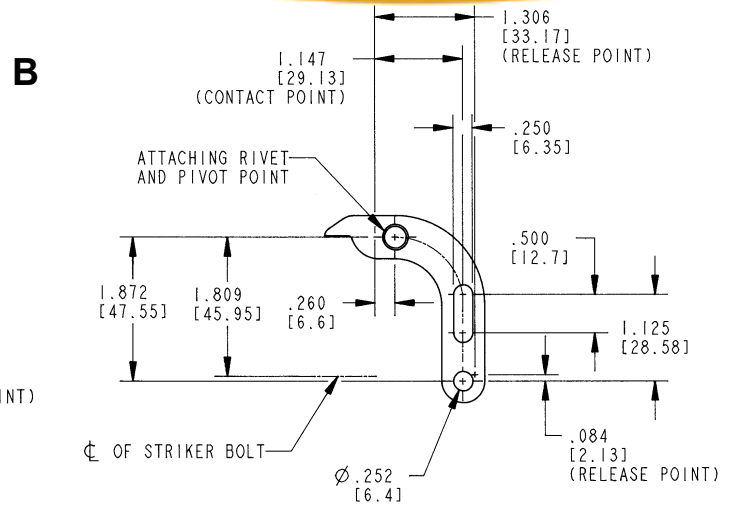
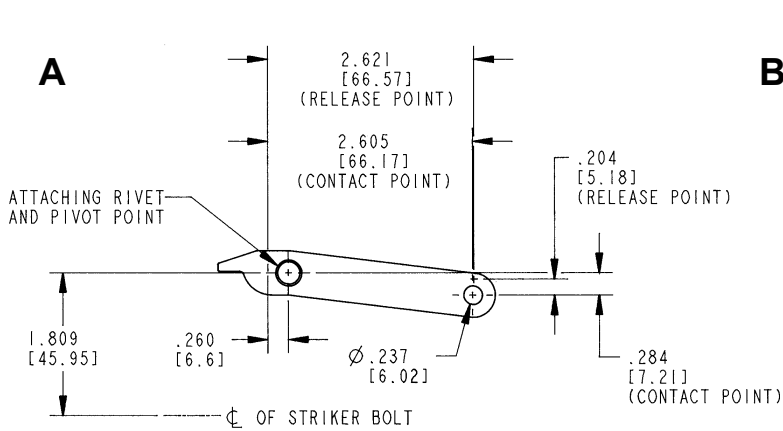
- Oven-cured dry lubricant is applied at factory on all critical moving parts

Individual part dimensions are for reference only. Refer to individual part drawings for complete dimensions, specifications, and installation procedures. Engineering assistance and application drawings are available.

All dimensions are for reference only. For more information visit: www.trimarkcorp.com

Applications of this latch may fall within the requirements of FMVSS 206 (ECE R11) and SAE J839 safety standards. These safety related requirements are dependent on door application, e.g. front and rear hinged doors, sliding doors, or hinged upward swinging doors. The entire door hardware system must be included in the design/analysis process: latch, handle, lock mechanism, cables/rods/linkages, fasteners, hinges, etc. This ensures compatibility of all components within the hardware system. If FMVSS 206 (ECE R11) is a requirement, then all of the components within the door system must comply with strength, inertia and locking requirements as specified within the Standard. Note that this product complies with FMVSS 206 (ECE R11) when tested with approved TriMark Striker Bolts in accordance with SAE J839 and that this product meets FMVSS 206 (ECE R11) load requirements and may be used in FMVSS 206 (ECE R11) applications pending TriMark application approval.





THE TRIP LEVERS ABOVE REPRESENT SIX TYPICALLY SUPPLIED OPTIONS.
 MANY MORE TRIP LEVER GEOMETRIES ARE AVAILABLE -- PLEASE INQUIRE.